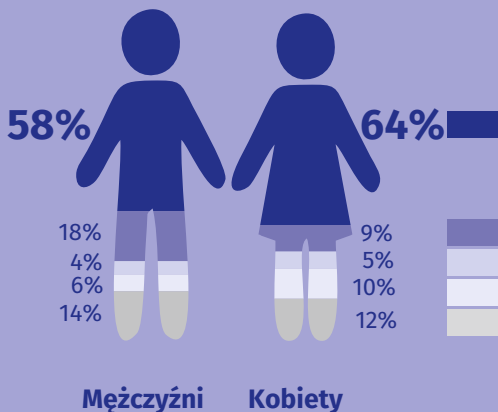
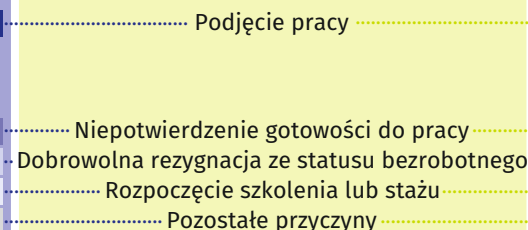


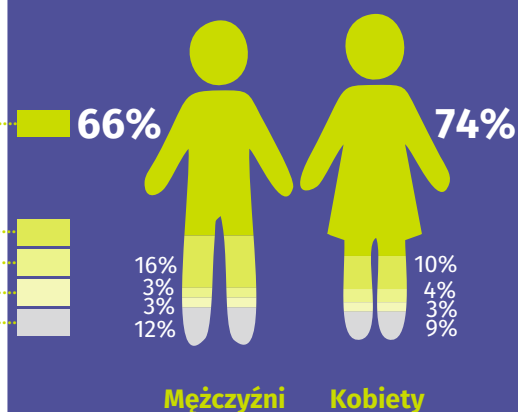
województwo mazowieckie



Przyczyny wyrejestrowania bezrobotnych w 2021 r.

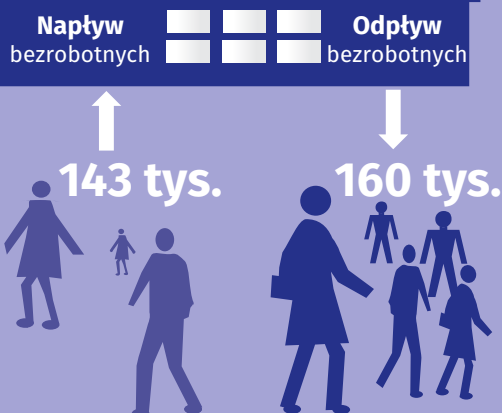


m.st. Warszawa



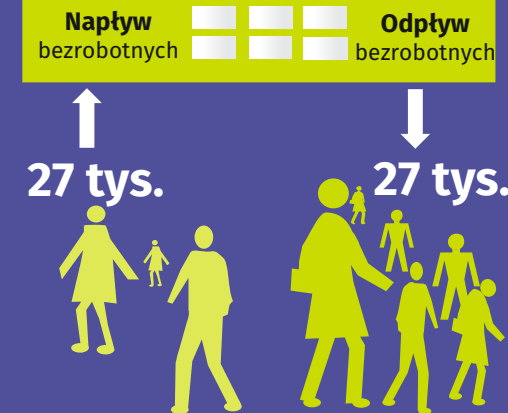
2021 r.

Powiatowe Urzędy Pracy

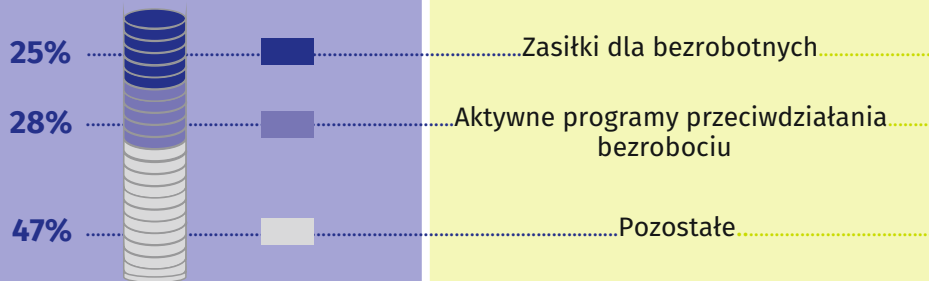


2021 r.

Urząd Pracy w Warszawie



1368 mln zł



Wydatki Funduszu Pracy w 2021 r.

367 mln zł

