

Labour market in September 2019

Data on Mazowieckie Voivodship and Warsaw capital city

EMPLOYMENT AND WAGES AND SALARIES IN THE ENTERPRISE SECTOR

Average employment*

Average monthly gross wages and salaries*

Mazowieckie Voivodship

Warsaw capital city

Mazowieckie Voivodship

Warsaw capital city

1529
thousand

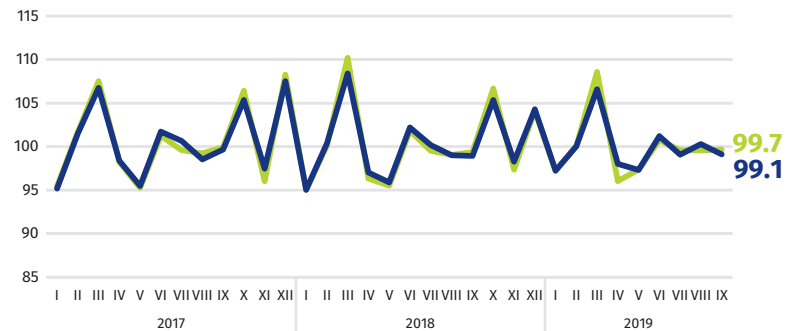
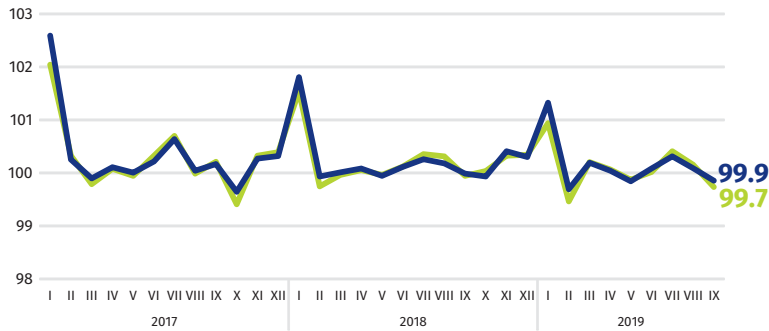
1083
thousand

PLN 6000

PLN 6343

previous month=100

previous month=100



* In enterprises employing more than 9 persons.

REGISTERED UNEMPLOYMENT

Mazowieckie Voivodship

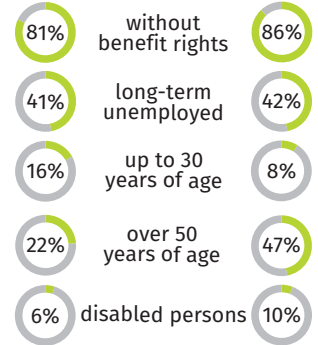
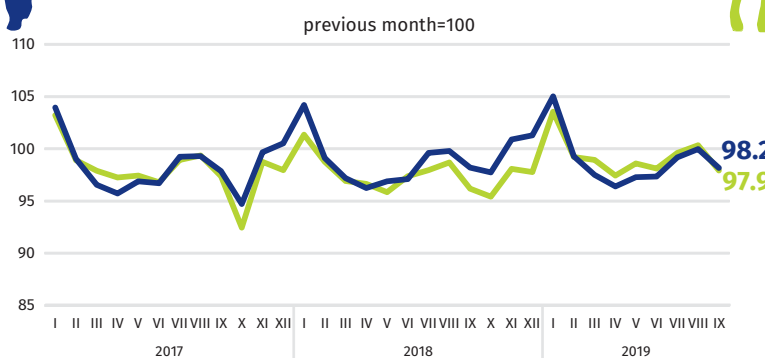
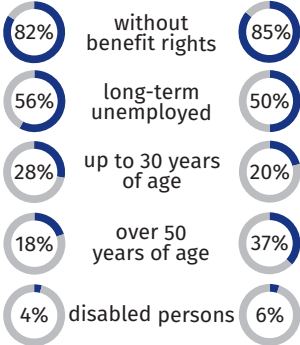
Warsaw capital city



65 ↓10% ↓9%
thousand thousand

Dynamics of unemployed persons registered
at the end of month

9 ↓16% ↓13%
thousand thousand



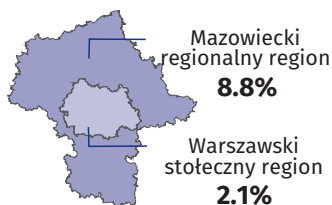
↓ spadek w stosunku do września 2018 r.

REGISTERED UNEMPLOYMENT RATE

Cities with powiat status
with lowest/highest
unemployment rate

Powiaty with the lowest
unemployment rate

Powiaty with the highest
unemployment rate



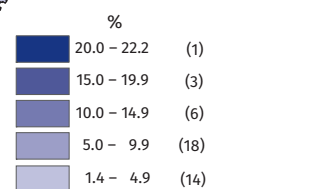
Warsaw capital city – **1.4%** ↓0.2 pp
warszawski zachodni – **1.6%** ↓0.4 pp
grójecki – **1.9%** ↓0.2 p. proc.

szydłowiecki – **22.2%** ↓1.1 pp
przysuski – **17.9%** ↓0.5 p. proc.
radomski – **16.2%** ↓1.1 p. proc.

Powiaty with the highest drops
in unemployment rate

gostyniński ↓2.6 pp
sierpecki ↓1.6 pp
przasnyski ↓1.3 pp

↓ decrease compared to September 2018



Number of powiaty in the brackets.

Rate
the study

