

Labour market in August 2019

Data on Mazowieckie Voivodship and Warsaw capital city

EMPLOYMENT AND WAGES AND SALARIES IN ENTERPRISE SECTOR

Average employment*

Mazowieckie Voivodship

1531
thousand

Warsaw capital city

1085
thousand

pervious month=100

Average monthly gross wages and salaries*

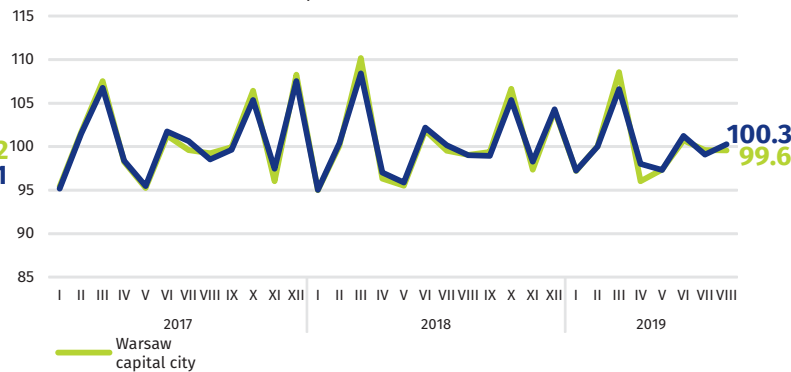
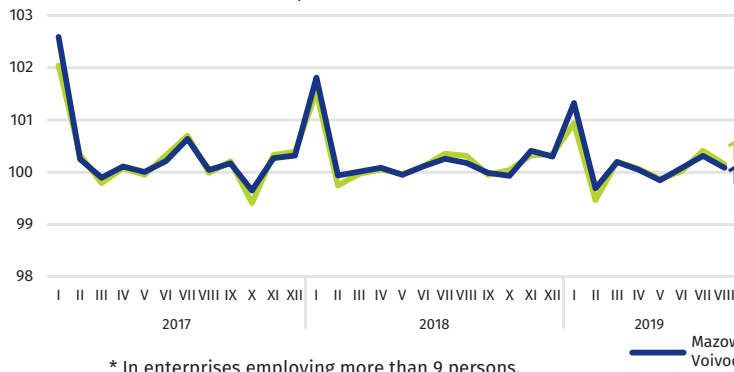
Mazowieckie Voivodship

PLN 6053

Warsaw capital city

PLN 6365

pervious month=100

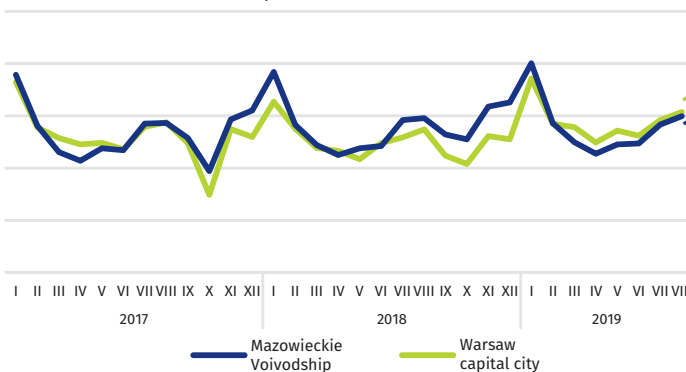


* In enterprises employing more than 9 persons.

REGISTERED UNEMPLOYMENT

Dynamics of unemployed persons registered at the end of month

pervious month=100

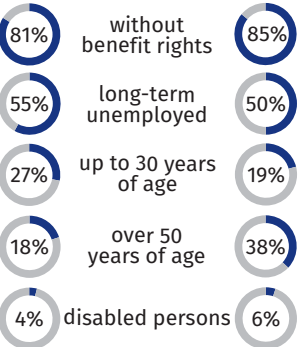


Mazowieckie Voivodship



53%

67 ↓10% ↓10% **58**
thousand thousand



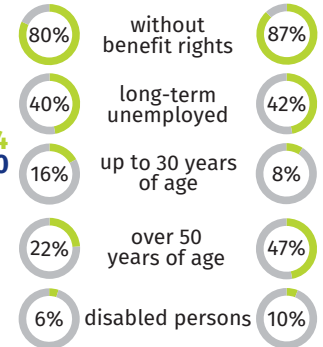
47%

Warsaw capital city



51%

9 ↓17% ↓15% **9**
thousand thousand

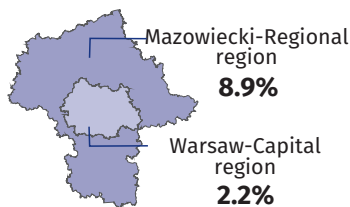
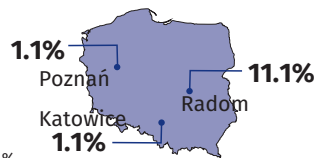


49%

↓ decrease compared to August 2018

REGISTERED UNEMPLOYMENT RATE

Cities with powiat status with lowest/highest unemployment rate



Powiats with the lowest unemployment rate

Warsaw capital city – **1.4%** ↓0.3 pp
warszawski zachodni – **1.7%** ↓0.3 pp
grójecki – **1.9%** ↓0.3 pp

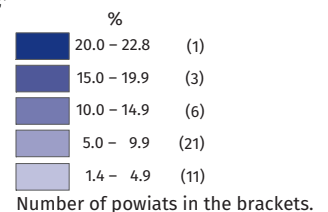
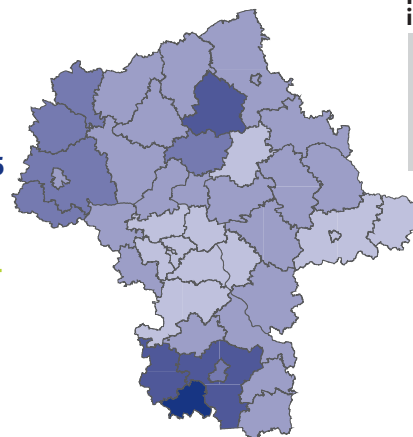
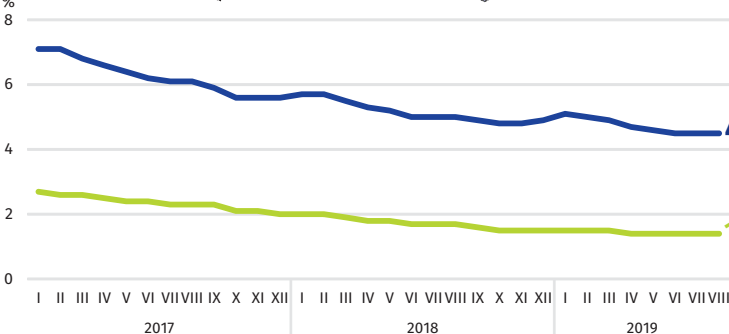
Powiats with the lowest unemployment rate

sztytowiecki – **22.8%** ↓0.9 pp
przysuski – **18.0%** ↓0.3 pp
radomski – **16.5%** ↓0.8 pp

Powiats with the highest drops in unemployment rate

gostyniński ↓2.9 pp
przasnyski ↓1.4 pp
ciechanowski, płocki, sierpecki ↓1.2 pp

↓ decrease compared to August 2018



Rate
the study

When publishing Statistical Office data – please indicate the source.