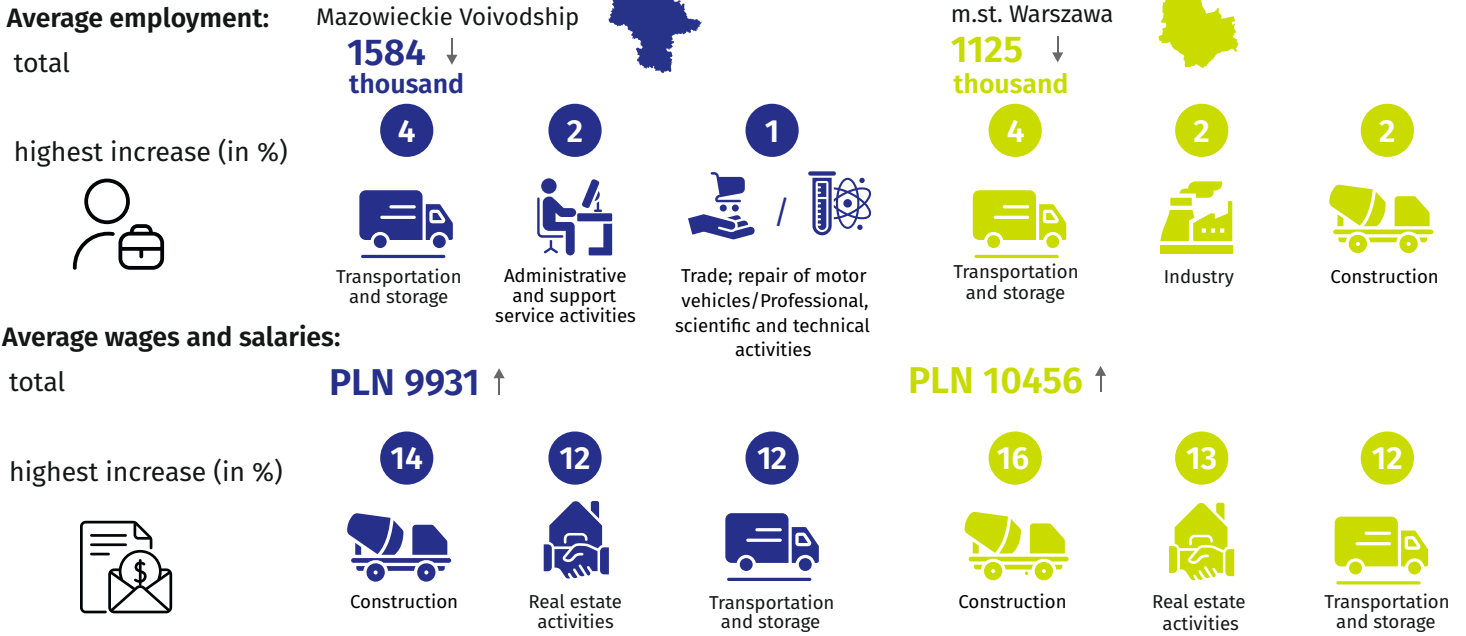




# Labour market in December 2024

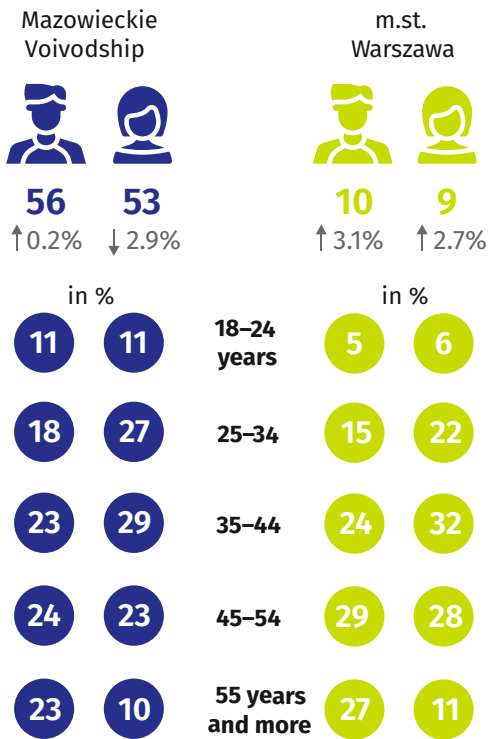
Data on Mazowieckie Voivodship  
and m.st. Warszawa

## Average employment and monthly gross wages and salaries in the enterprise sector \*



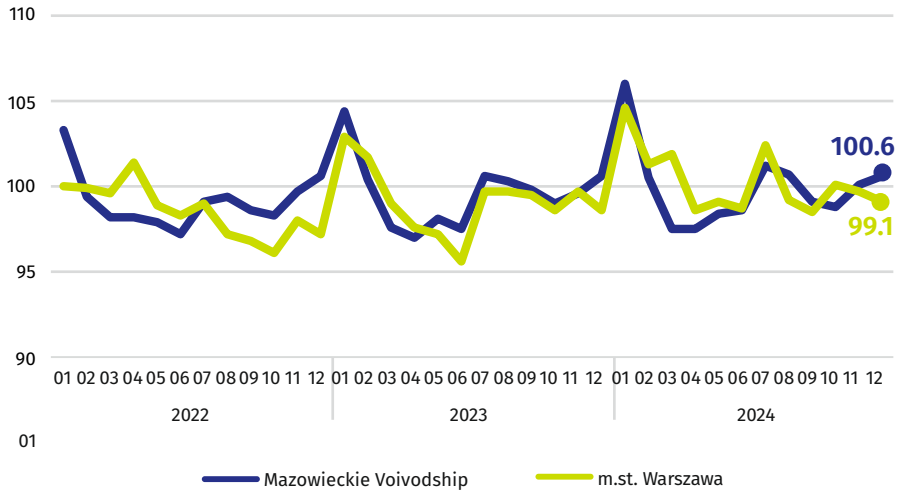
## Registered unemployed persons at the end of month

by sex and age (in thousands)



## Indices of the number of the registered unemployed at the end of month

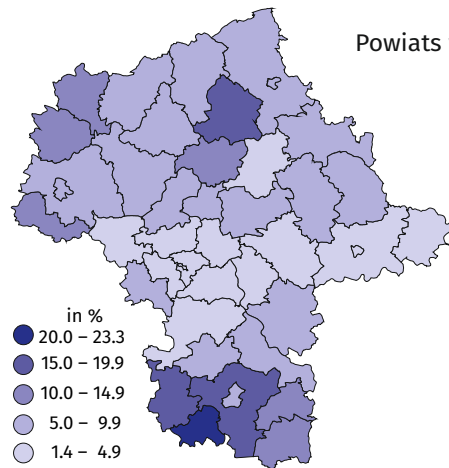
(previous month=100)



## Registered unemployment rate

Powiaty with the highest decreases in unemployment rate in pp

- szydłowiecki ↓ 0.8
- m. Ostrołęka ↓ 0.7
- przysuski ↓ 0.7
- gostyniński ↓ 0.6



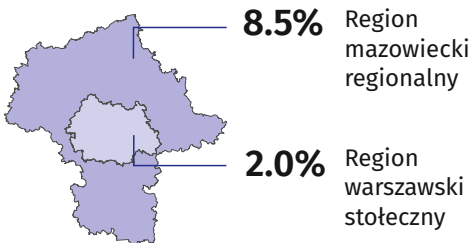
Powiaty with the highest unemployment rate in % in pp

- szydłowiecki **23.3** ↓ 0.8
- przysuski **17.9** ↓ 0.7
- radomski **16.1** ↓ 0.2

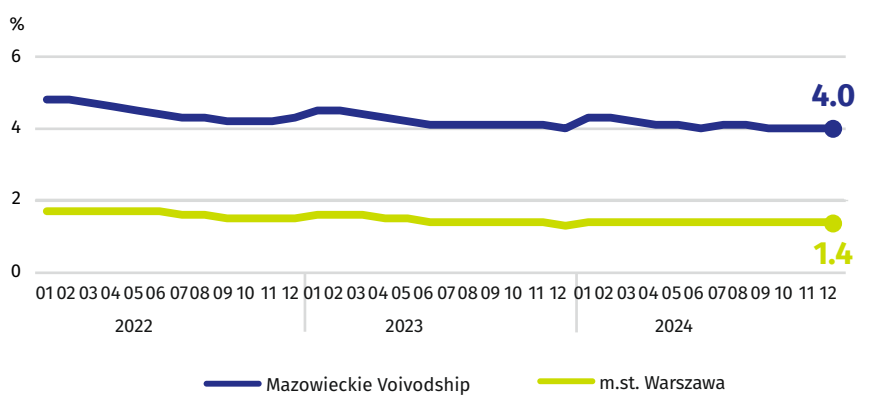
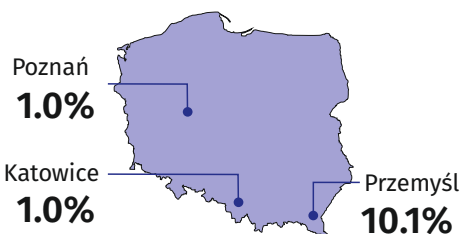
Powiaty with the lowest unemployment rate in % in pp

- m.st. Warszawa **1.4** ↑ 0.1
- warszawski zachodni **1.6** ↓
- pruszkowski **2.1** ↓

## Registered unemployment rate in regions of Mazowieckie Voivodship



## Cities with powiat status with the lowest and highest unemployment rate in Poland



↑ ↓ ↔ increase/decrease/no change compared to December 2023

\* In enterprises employing more than 9 persons.

When publishing Statistical Office data - please indicate the source.