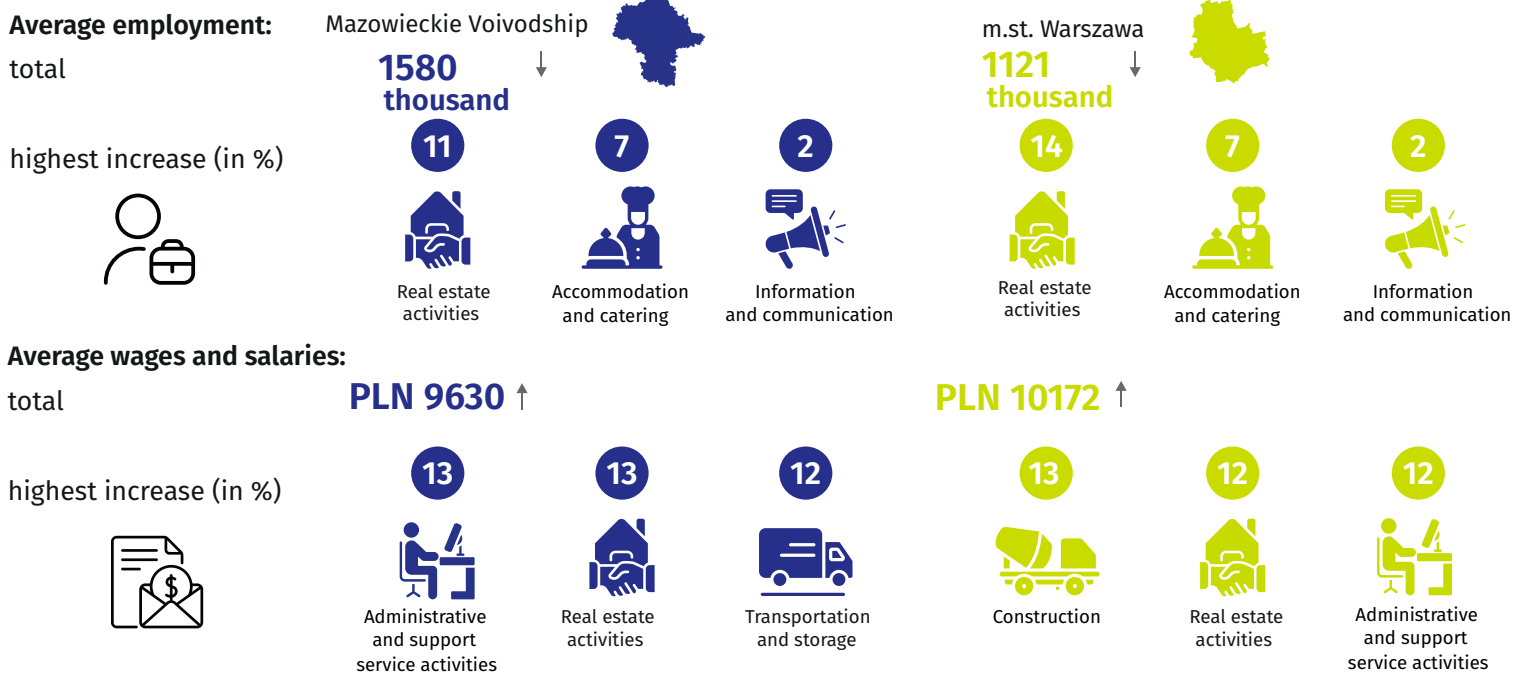




Labour market in October 2024

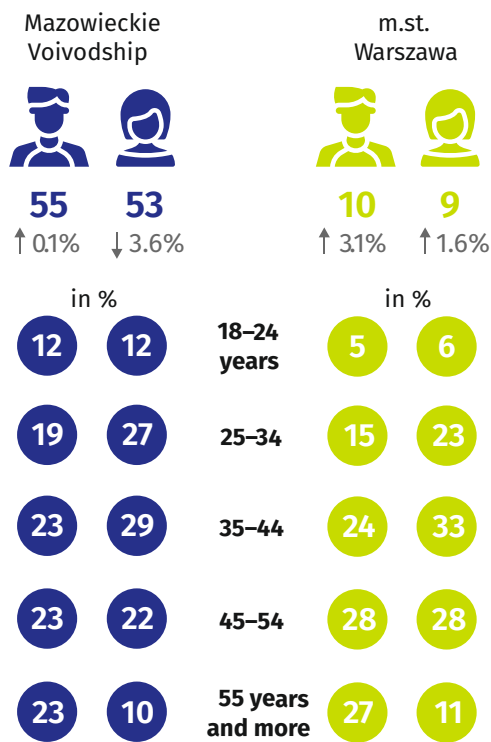
Data on Mazowieckie Voivodship
and m.st. Warszawa

Average employment and monthly gross wages and salaries in the enterprise sector *



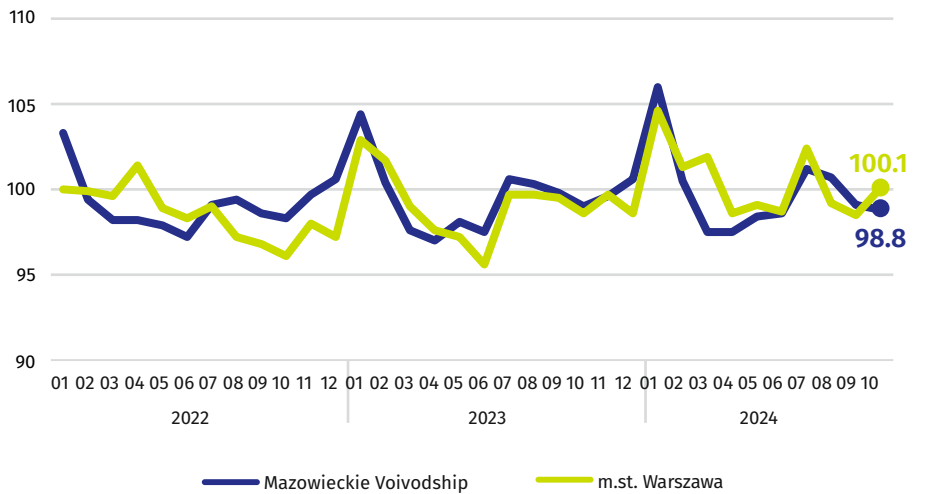
Registered unemployed persons at the end of month

by sex and age (in thousands)



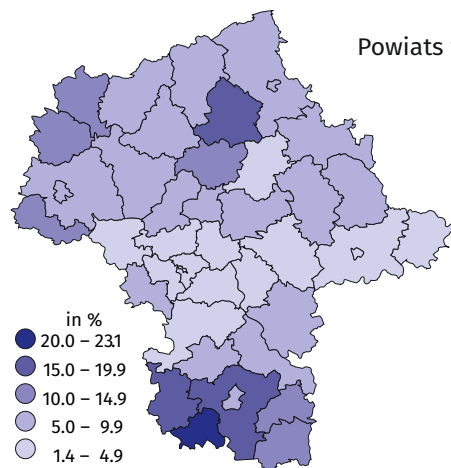
Indices of the number of the registered unemployed at the end of month

(previous month=100)



Registered unemployment rate

Powiaty with the highest decreases in unemployment rate in pp



- szydlowiecki ↓ 1.0
- przysuski ↓ 0.9
- garwoliński ↓ 0.6
- kozienicki ↓ 0.6
- Płock ↓ 0.6

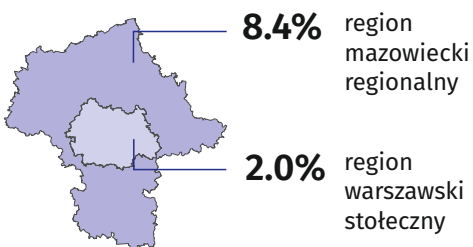
Powiaty with the highest unemployment rate in % in pp

- szydlowiecki **23.1** ↓ 1.0
- przysuski **17.7** ↓ 0.9
- radomski **16.0** ↓ 0.4

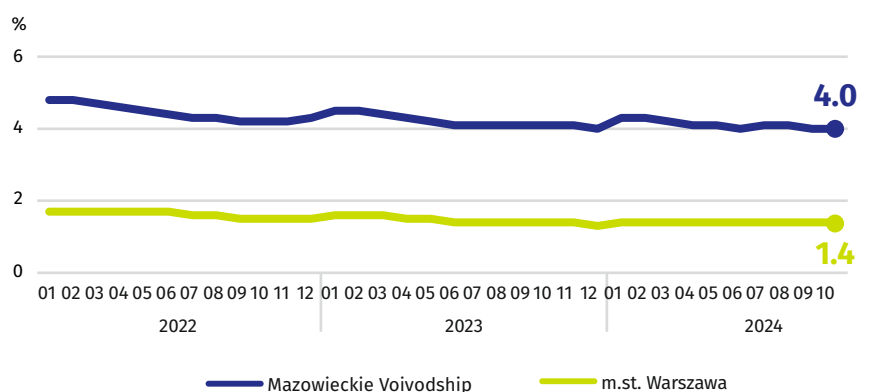
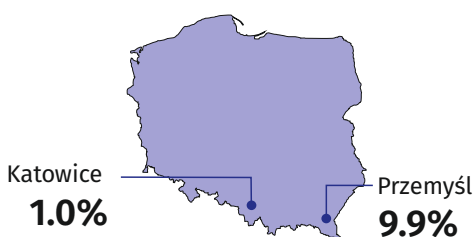
Powiaty with the lowest unemployment rate in % in pp

- m.st. Warszawa **1.4** ↑
- warszawski zachodni **1.6** ↑
- pruszkowski **2.1** ↓ 0.2

Registered unemployment rate in the regions of Mazowieckie Voivodship



Cities with powiat status with the lowest and highest unemployment rate in Poland



↑ ↓ ↔ increase/decrease/no changes compared to October 2023

* In enterprises employing more than 9 persons.

When publishing Statistical Office data - please indicate the source.