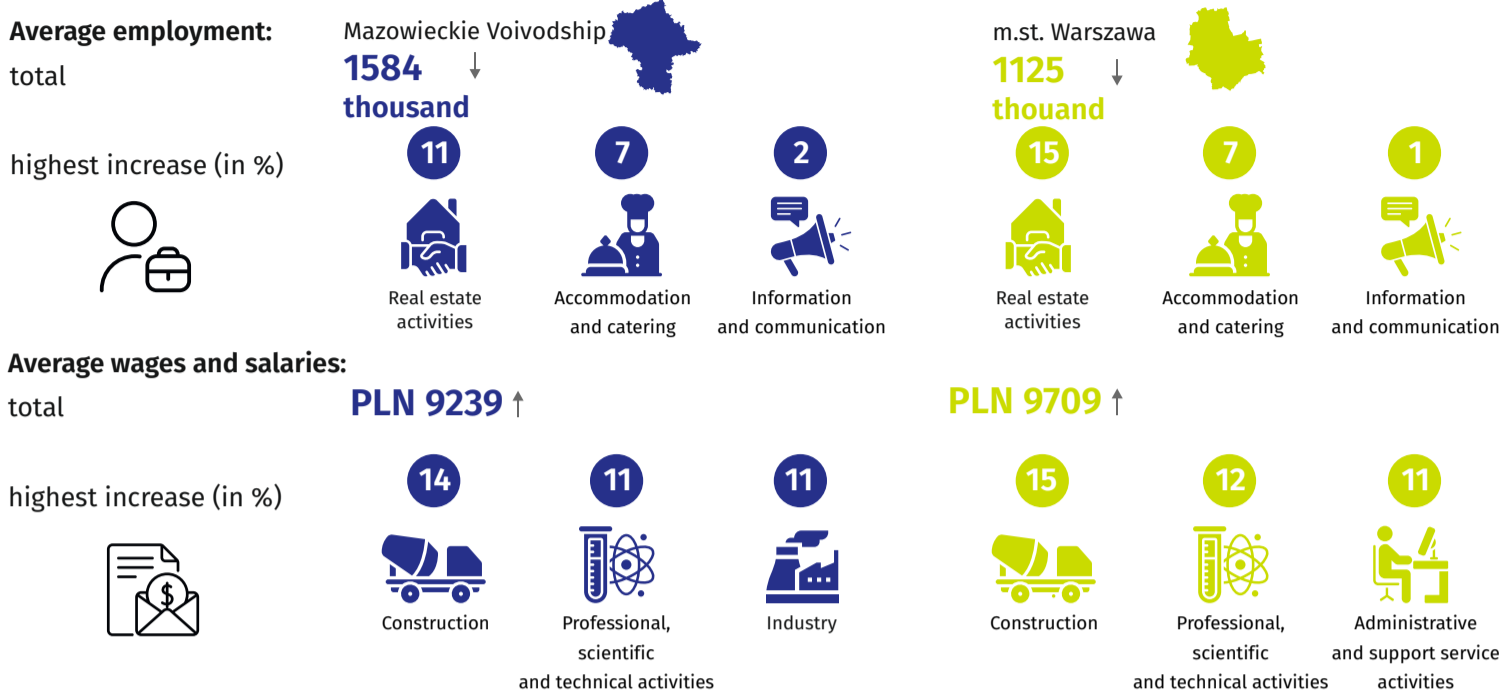


# Labour market in September 2024

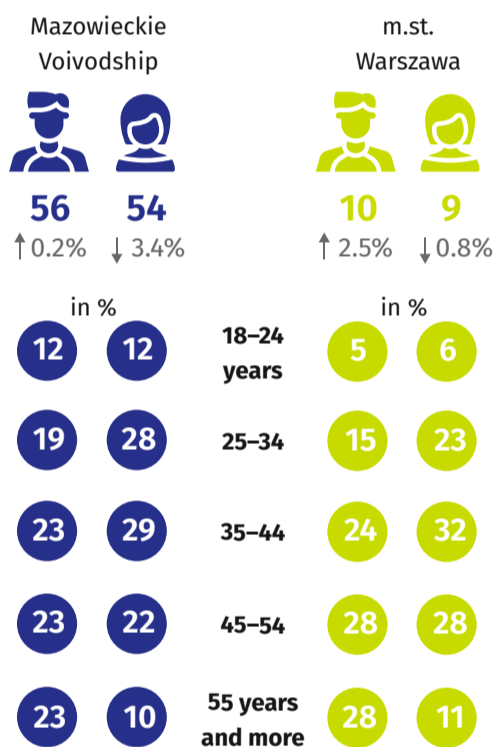
Data on Mazowieckie Voivodship  
and m.st. Warszawa

## Average employment and monthly gross wages and salaries in the enterprise sector \*



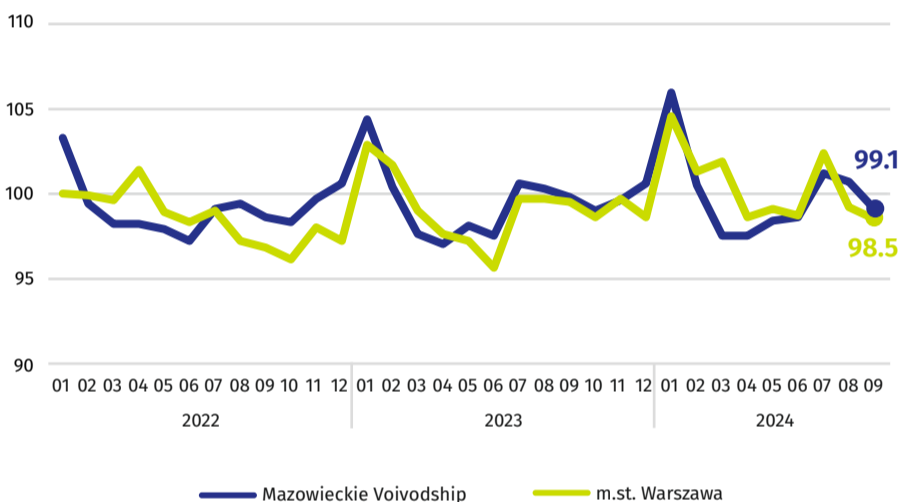
## Registered unemployed persons at the end of month

by sex and age (in thousands)



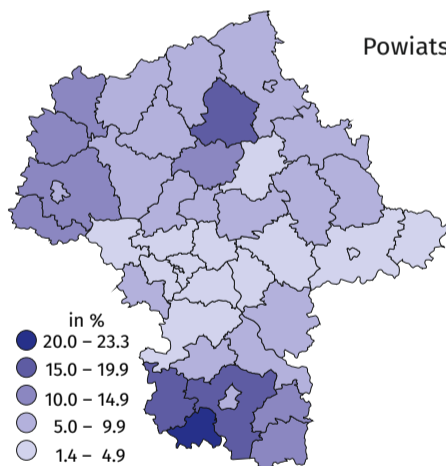
## Indices of the number of the registered unemployed at the end of month

(previous month=100)



## Registered unemployment rate

Powiaty with the highest decreases in unemployment rate in pp



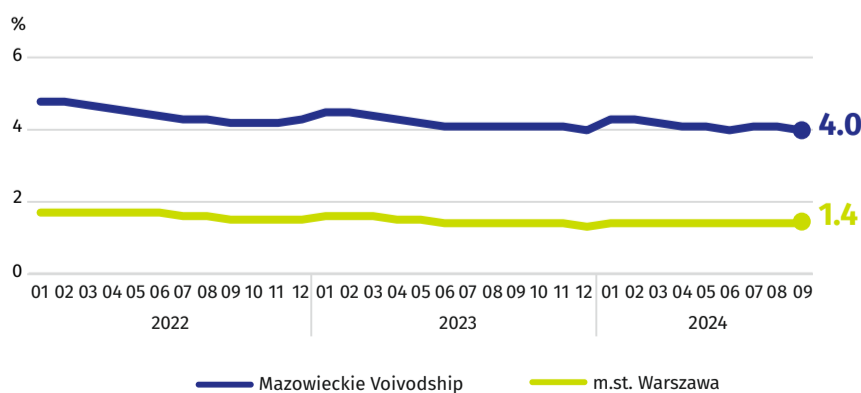
szymbarkowski ↓ 1.1  
przysuski ↓ 0.8  
wołomiński ↓ 0.6

Powiaty with the highest unemployment rate in % in pp

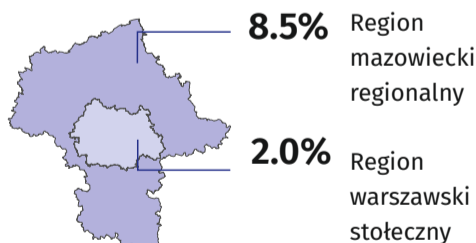
szymbarkowski **23.3** ↓ 1.1  
przysuski **18.0** ↓ 0.8  
radomski **16.2** ↑

Powiaty with the lowest unemployment rate in % in pp

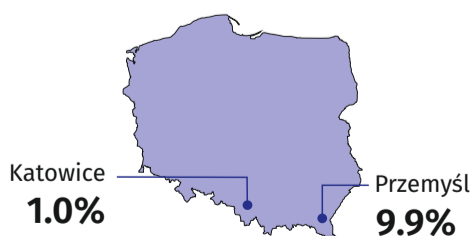
m.st. Warszawa **1.4** ↑  
warszawski zachodni **1.6** ↑  
pruszkowski **2.2** ↓ 0.1



## Registered unemployment rate in the regions of Mazowieckie Voivodship



## Cities with powiat status with the lowest and highest unemployment rate in Poland



↑ ↓ ↔ increase/decrease/no changes compared to September 2023

\* In enterprises employing more than 9 persons.

When publishing Statistical Office data - please indicate the source.