

Average employment and monthly gross wages and salaries in the enterprise sector *

Employment:
total

Mazowieckie Voivodship
1598 thousand ↑



m.st. Warszawa
1136 thousand ↑



highest increase (in %)



12



Real estate activities

3



Accommodation
and catering

3



Construction

16



Real estate activities

3



Accommodation
and catering

2



Construction

Wages and salaries:
total

PLN 9950 ↑

PLN 10635 ↑

highest increase (in %)



16



Accommodation
and catering

14



Administrative
and support service
activities

14



Professional,
scientific and technical
activities

16



Accommodation
and catering

14



Administrative
and support service
activities

14



Professional,
scientific and technical
activities

Registered unemployed persons at the end of month

by sex and age (in thousands)

Mazowieckie
Voivodship

m.st.
Warszawa



59

56

↓ 1.7% ↓ 6.0%



10

9

↓ 3.2% ↓ 8.9%

11

12

18-24
years

5

6

19

28

25-34

15

23

24

29

35-44

25

33

23

21

45-54

27

27

23

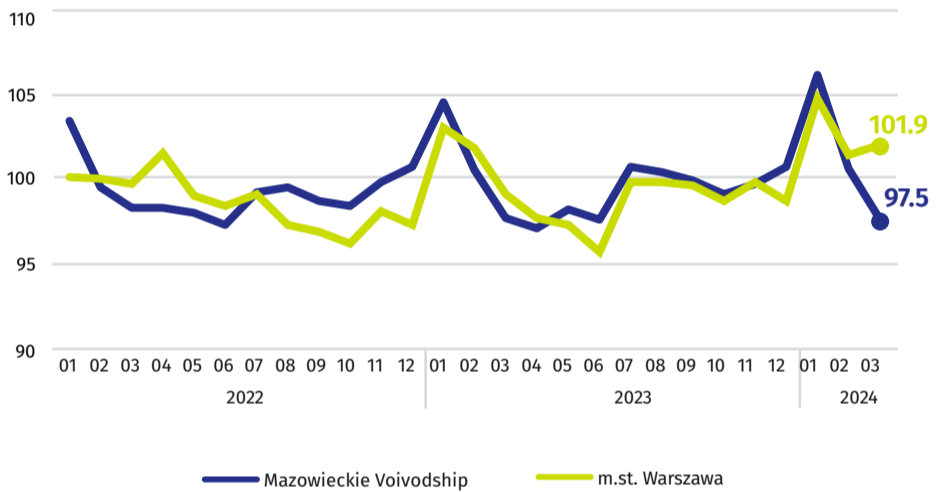
9

55 years
and more

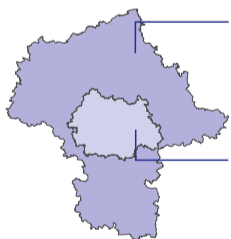
27

11

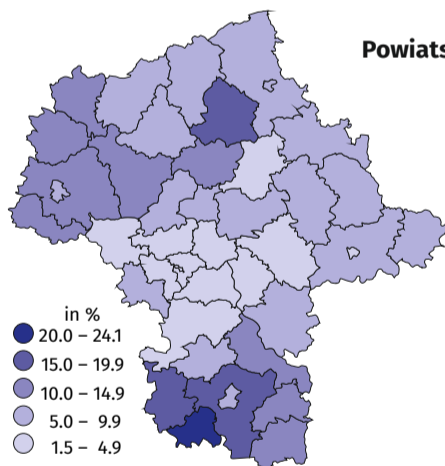
Indices of the number of the registered unemployed at the end of month (previous month=100)



Registered unemployment rate in regions of Mazowieckie Voivodship



Registered unemployment rate



Powiats with the highest decreases
in unemployment rate
in pp

żuromiński ↓ 1.3

przysuski ↓ 1.0

Płock ↓ 0.8

Powiats with the highest
unemployment rate
in % in pp

szydłowiecki **24.1** ↓ 0.5

przysuski **18.5** ↓ 1.0

radomski **16.6** ↑

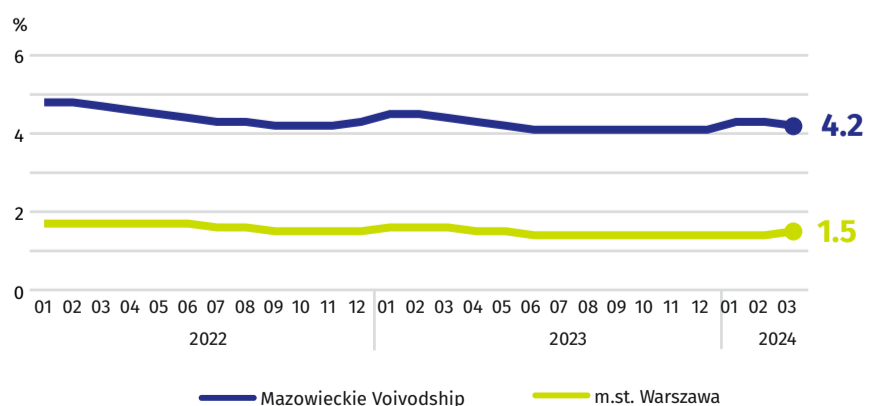
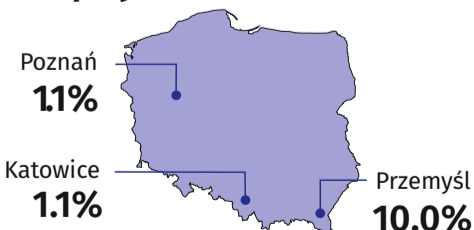
Powiats with the lowest
unemployment rate
in % in pp

m.st. Warszawa **1.5** ↓ 0.1

warszawski zachodni **1.8** ↑

pruszkowski **2.4** ↑

Cities with powiat status with the lowest and highest unemployment rate in Poland



↑ ↓ ↔ increase/decrease/no changes compared to February 2023

* In enterprises employing more than 9 persons.

When publishing Statistical Office data - please indicate the source.