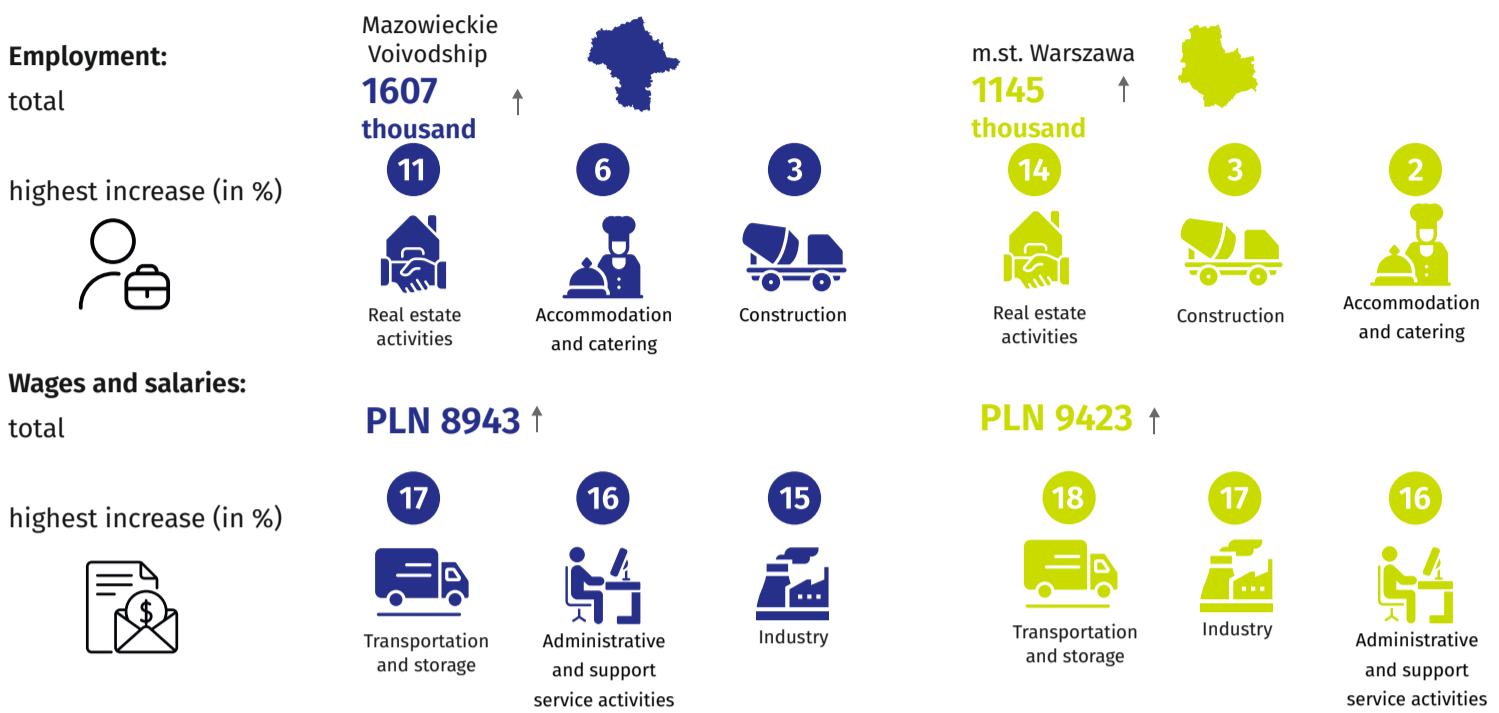


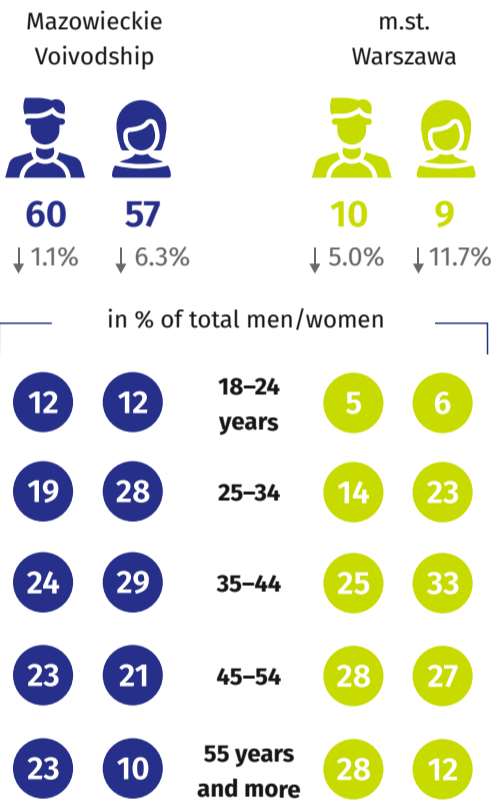
Labour market in January 2024

Data on Mazowieckie Voivodship
and m.st. Warszawa

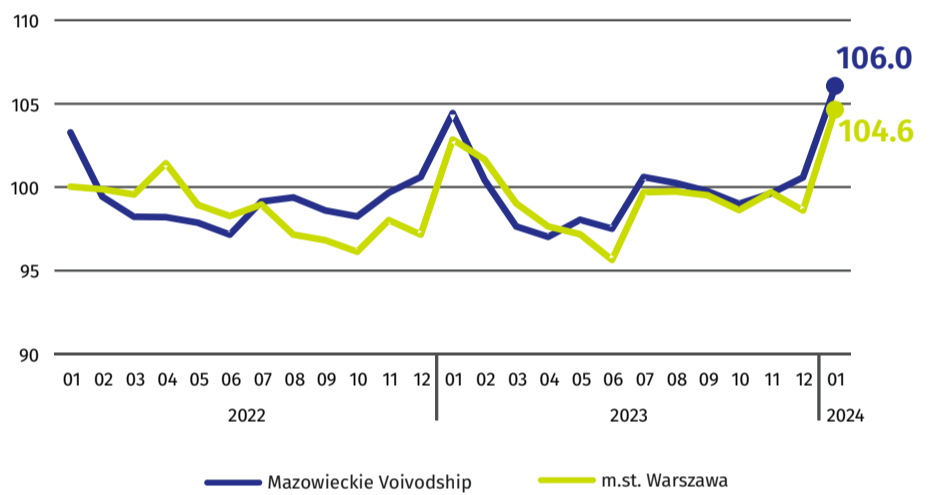
Average employment and monthly gross wages and salaries in the enterprise sector *



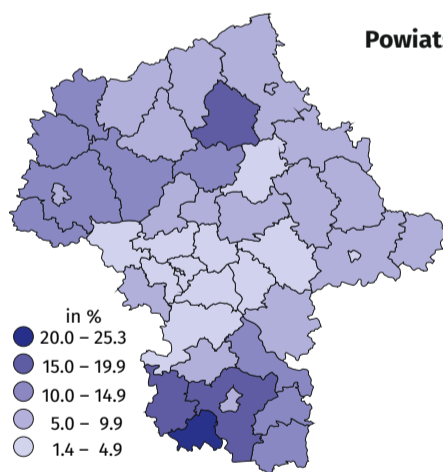
Registered unemployed persons at the end of month by sex and age (in thousands)



Indices of the number of the registered unemployed at the end of month (previous month=100)



Registered unemployment rate



Powiats with the highest decreases in unemployment rate in pp

przysuski	↓ 1.3
żuromiński	↓ 1.3
pułtuski	↓ 0.9
wołomiński	↓ 0.9
płocki	↓ 0.8

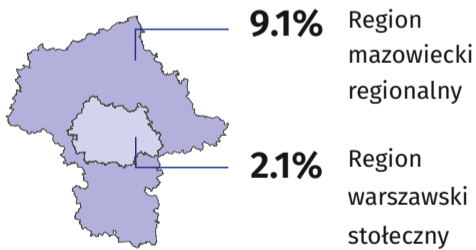
Powiats with the highest unemployment rate in % in pp

sztytowiecki	25.3	↓ 0.4
przysuski	19.7	↓ 1.3
makowski	17.4	↑ 0.4

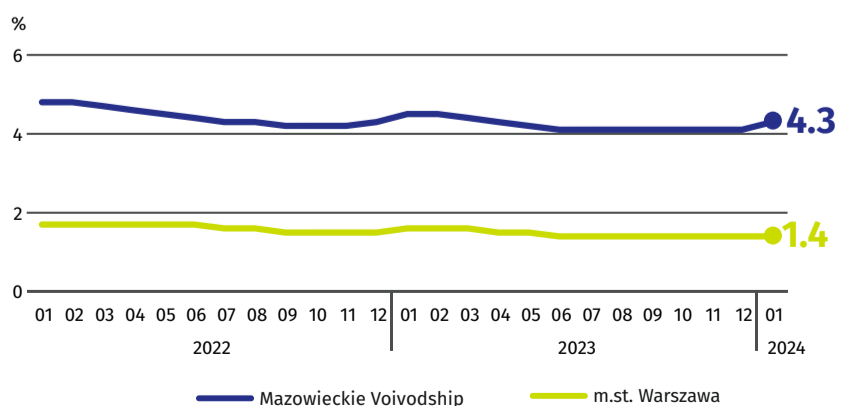
Powiats with the lowest unemployment rate in % in pp

m.st. Warszawa	1.4	↓ 0.2
warszawski zachodni	1.7	↔
pruszkowski	2.3	↔

Registered unemployment rate in regions of Mazowieckie Voivodship



Cities with powiat status with the lowest and highest unemployment rate in Poland



↑ ↓ ↔ increase/decrease/no changes compared to January 2023

* In enterprises employing more than 9 persons.

When publishing Statistical Office data - please indicate the source.