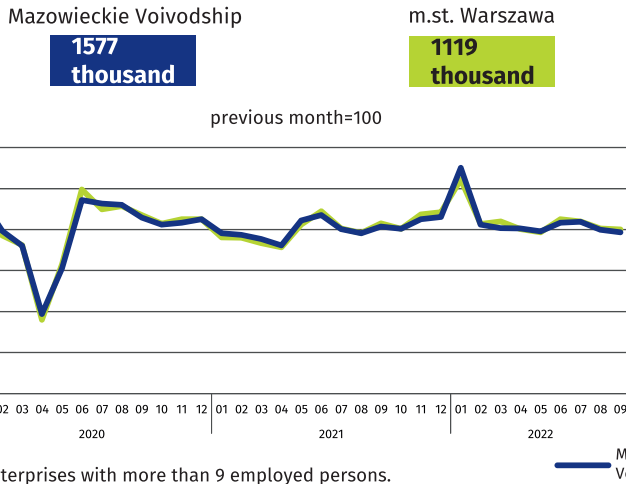


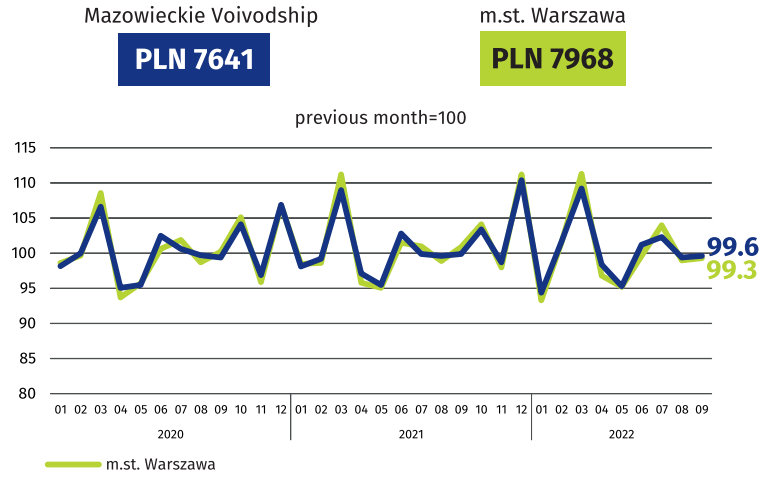
Data on Mazowieckie Voivodship and m.st. Warszawa

## EMPLOYMENT AND WAGES AND SALARIES IN THE ENTERPRISE SECTOR

### Average paid employment\*



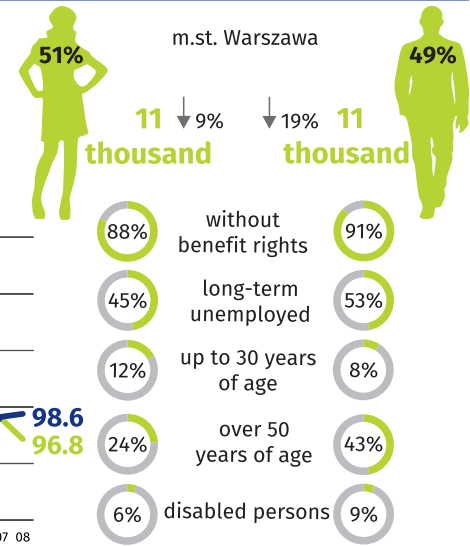
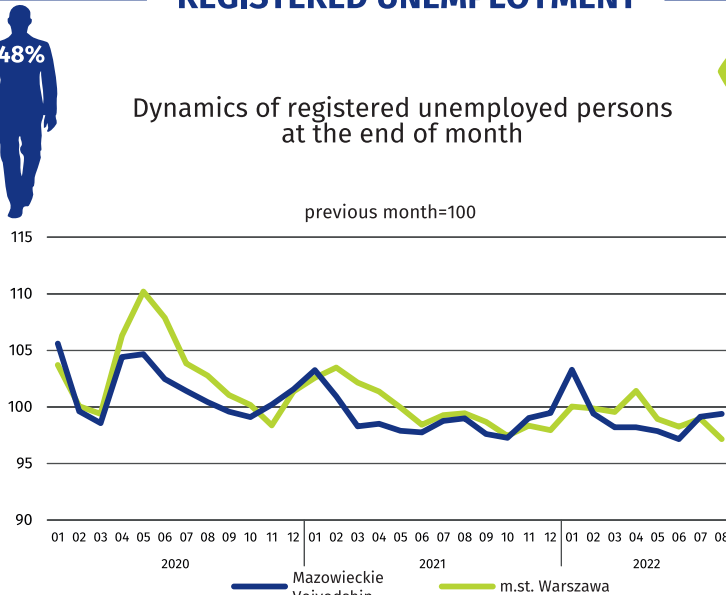
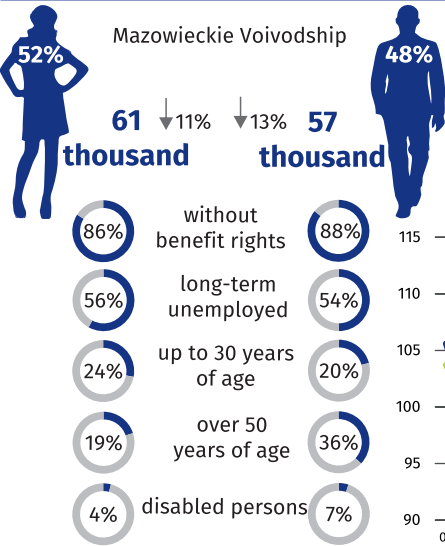
### Average monthly gross wages and salaries\*



\* In enterprises with more than 9 employed persons.

## REGISTERED UNEMPLOYMENT

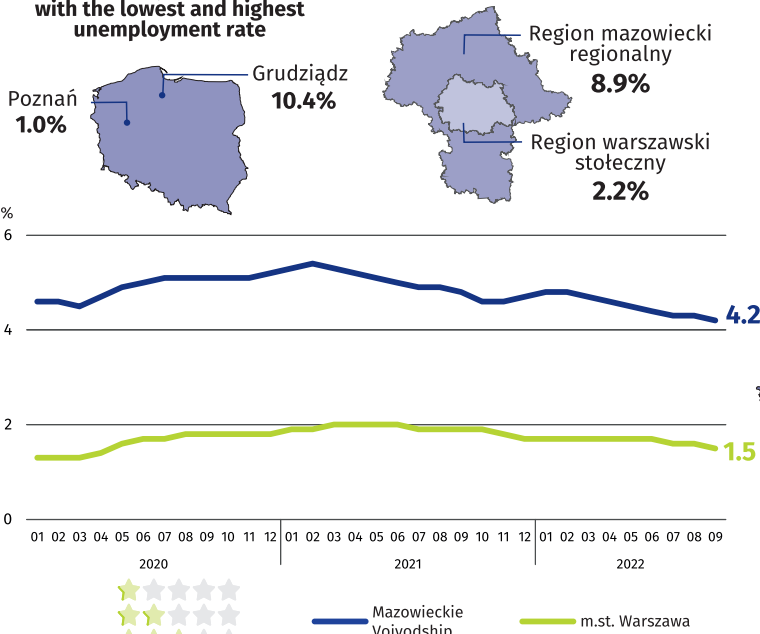
### Dynamics of registered unemployed persons at the end of month



↓ decrease compared to September 2021

## REGISTERED UNEMPLOYMENT RATE

### Cities with powiat status with the lowest and highest unemployment rate



### Powiats with the lowest unemployment rate

m.st. Warszawa – **1.5%** ↓ 0.4 pp  
 warszawski zachodni – **1.6%** ↓ 0.5 pp  
 grójecki – **2.3%** ↓ 0.1 pp  
 przyski – **2.3%** ↓ 1.0 pp

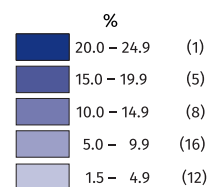
### Powiats with the highest unemployment rate

szydłowiecki – **24.9%** ↑ 2.3 pp  
 przyski – **17.6%** ↑ 2.3 pp  
 radomski – **17.3%** ↑ 1.6 pp

### Powiats with the highest drops in unemployment rate

legionowski ↓ 1.8 pp  
 m. Radom, sochaczewski ↓ 1.3 pp  
 płoński, przyski ↓ 1.0 pp

↑↓ decrease/increase compared to September 2021



Number of powiats in the brackets.