

Data on Mazowieckie Voivodship and m.st. Warszawa

EMPLOYMENT AND WAGES AND SALARIES IN THE ENTERPRISE SECTOR

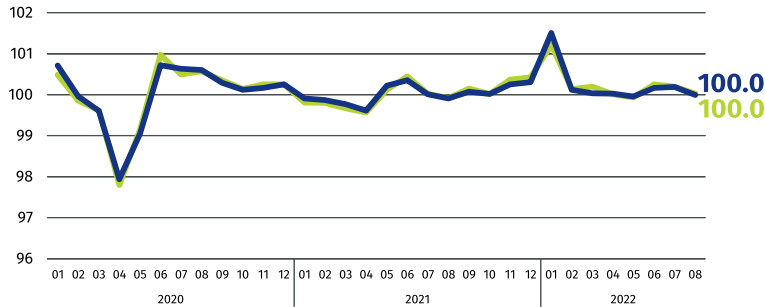
Average paid employment*

Mazowieckie Voivodship m.st. Warszawa

1578
thousand

1119
thousand

previous month=100



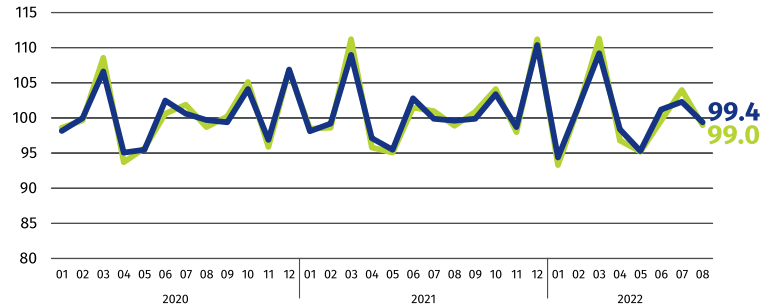
Average monthly gross wages and salaries*

Mazowieckie Voivodship m.st. Warszawa

PLN 7671

PLN 8028

previous month=100

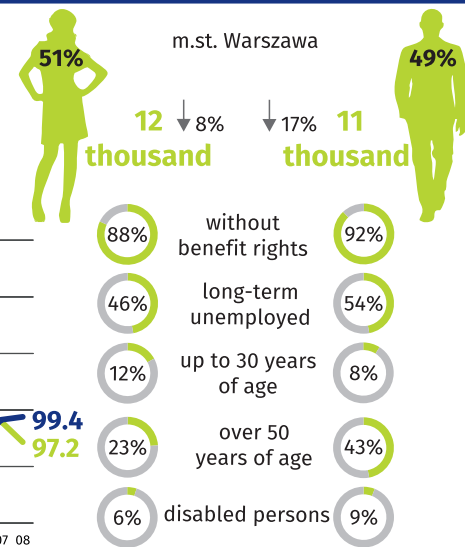
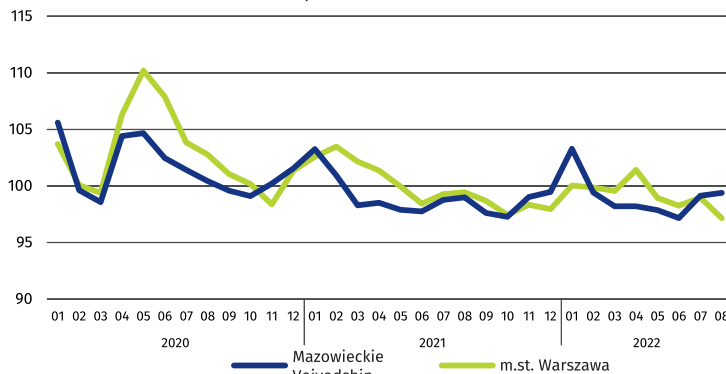
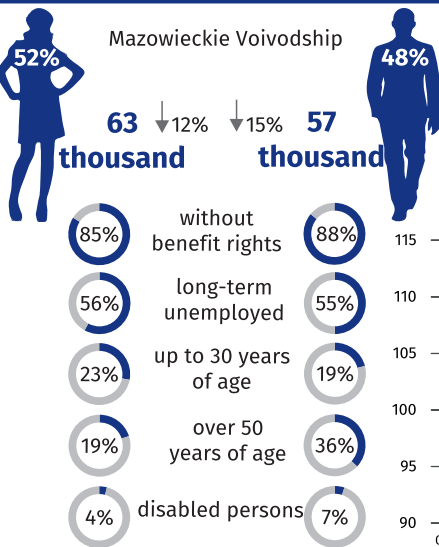


* In enterprises with more than 9 employed persons.

REGISTERED UNEMPLOYMENT

Dynamics of registered unemployed persons at the end of month

previous month=100



↓ decrease compared to August 2021

REGISTERED UNEMPLOYMENT RATE

Cities with powiat status with the lowest and highest unemployment rate

Poznań **1.1%** Grudziądz **10.1%**

Region mazowiecki regionalny **7.9%**
Region warszawski stołeczny **2.3%**

Powiaty with the lowest unemployment rate

m.st. Warszawa – **1.7%** ↓ 0,2 pp
warszawski zachodni – **1.7%** ↓ 0.5 pp
grójecki – **2.1%** ↓ 0.3 pp
pruszkowski – **2.3%** ↓ 1.1 pp

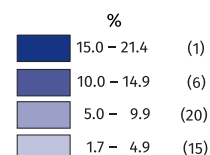
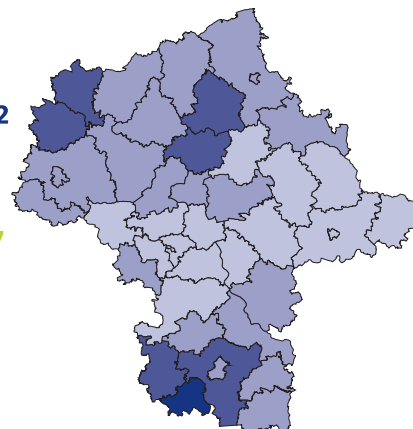
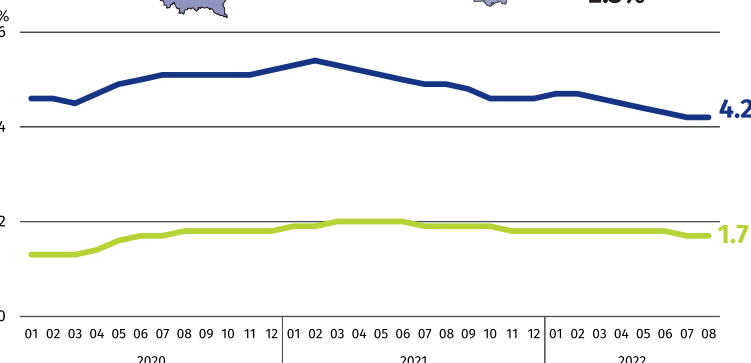
Powiaty with the highest unemployment rate

sztytowiecki – **21.4%** ↓ 1.4 pp
przysuski – **14.4%** ↓ 1.5 pp
radomski – **14.1%** ↓ 2.1 pp

Powiaty with the highest drops in unemployment rate

gostyniński ↓ 2.2 pp
legionowski, radomski ↓ 2.1 pp
sochaczewski ↓ 2.0 pp

↓ decrease compared to August 2021



Number of powiaty in the brackets.

Rate
the study

When publishing Statistical Office data – please indicate the source.