

Data on Mazowieckie Voivodship and m.st. Warszawa

EMPLOYMENT AND WAGES AND SALARIES IN THE ENTERPRISE SECTOR

Average paid employment*

Mazowieckie Voivodship

1575
thousand

m.st. Warszawa

1117
thousand

previous month=100



Average monthly gross wages and salaries*

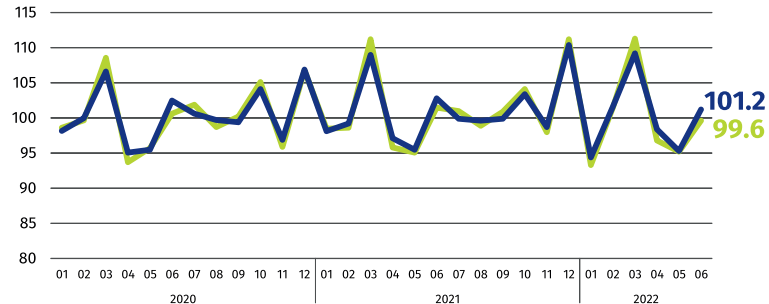
Mazowieckie Voivodship

PLN 7539

m.st. Warszawa

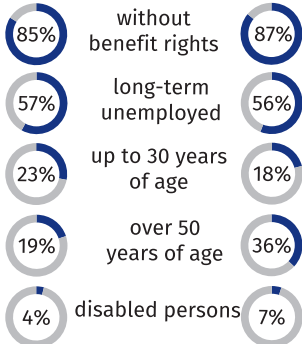
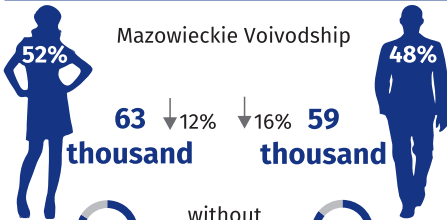
PLN 7793

previous month=100



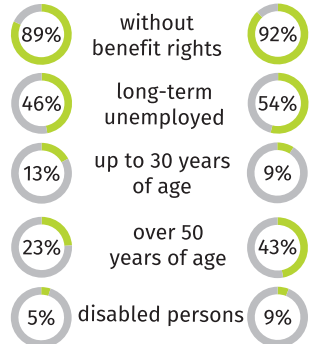
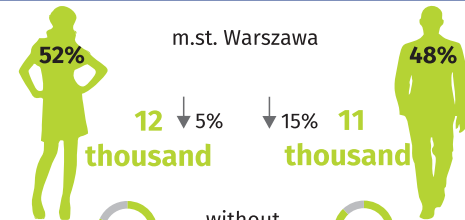
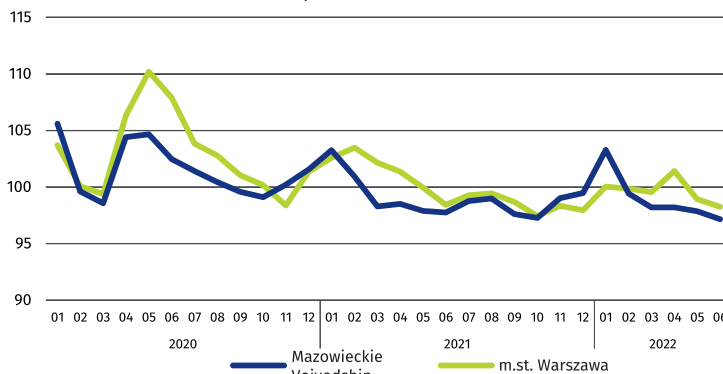
* In enterprises with more than 9 employed persons.

REGISTERED UNEMPLOYMENT



Dynamics of registered unemployed persons at the end of month

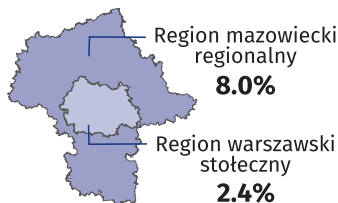
previous month=100



↓ decrease compared to June 2021

REGISTERED UNEMPLOYMENT RATE

Cities with powiat status with the lowest and highest unemployment rate



Powiats with the lowest unemployment rate

m.st. Warszawa – 1.7% ↓ 0.3 pp
warszawski zachodni – 1.8% ↓ 0.4 pp
grójecki – 2.0% ↓ 0.6 pp

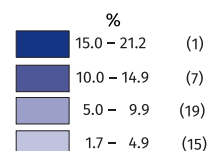
Powiats with the highest unemployment rate

szymbarkoński – 21.2% ↓ 1.6 pp
makowski – 14.6% ↓ 0.3 pp
przysuski – 14.3% ↓ 1.4 pp

Powiats with the highest drops in unemployment rate

gostyniński ↓ 2.7 pp
radomski, sierpecki ↓ 2.4 pp
m. Radom ↓ 2.1 pp

↓ decrease compared to June 2021



Number of powiats in the brackets.

