

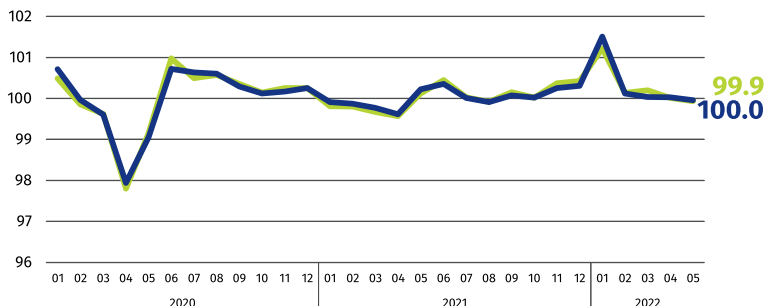
Data on Mazowieckie Voivodship and m.st. Warszawa

EMPLOYMENT AND WAGES AND SALARIES IN THE ENTERPRISE SECTOR

Average paid employment*

Mazowieckie Voivodship **1572 thousand**
 m.st. Warszawa **1114 thousand**

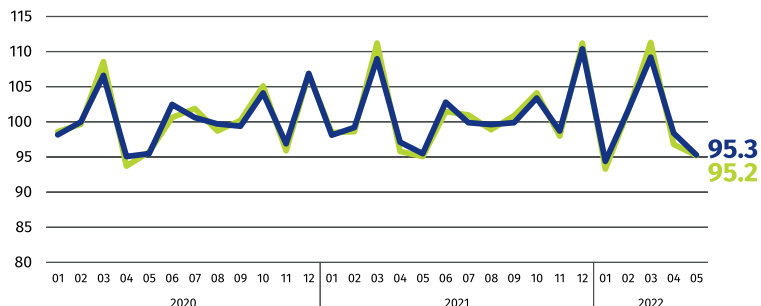
previous month=100



Average monthly gross wages and salaries*

Mazowieckie Voivodship **PLN 7450**
 m.st. Warszawa **PLN 7823**

previous month=100

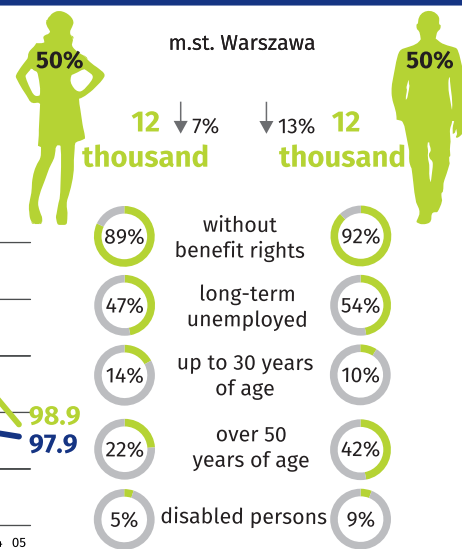
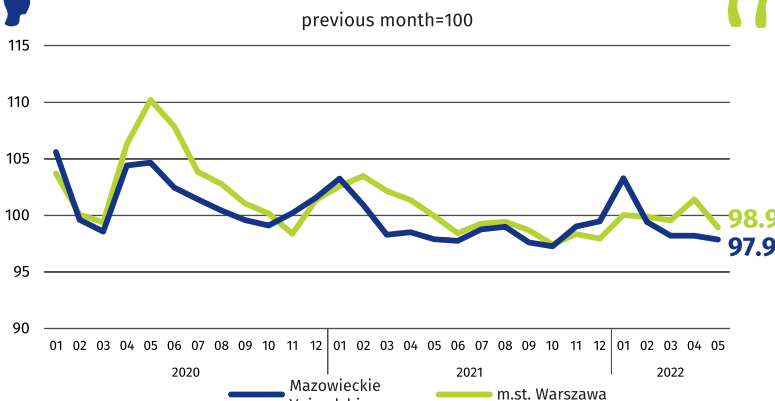
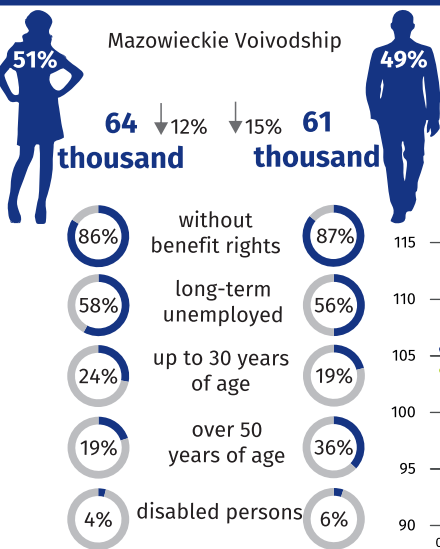


* In enterprises with more than 9 employed persons.

REGISTERED UNEMPLOYMENT

Dynamics of registered unemployed persons at the end of month

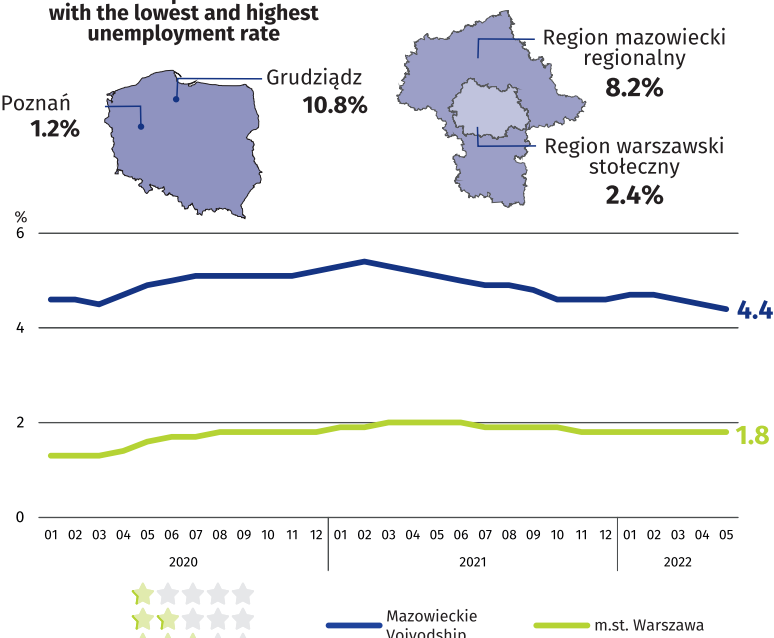
previous month=100



↓ decrease compared to May 2021

REGISTERED UNEMPLOYMENT RATE

Cities with powiat status with the lowest and highest unemployment rate



Powiats with the lowest unemployment rate

m.st. Warszawa – 1.8% ↓ 0.2 pp
 warszawski zachodni – 1.8% ↓ 0.5 pp
 grójecki – 2.3% ↓ 0.4 pp

Powiats with the highest unemployment rate

szymbarko – 21.5% ↓ 1.6 pp
 makowski – 15.1% ↓ 1.3 pp
 przysuski – 14.7% ↓ 1.3 pp
 radomski – 14.7% ↓ 2.1 pp

Powiats with the highest drops in unemployment rate

sierpecki – 3.0 pp
 gostyniński – 2.4 pp
 radomski – 2.1 pp

↓ decrease/no changes compared to May 2021

