

Data on Mazowieckie Voivodship and m.st. Warszawa

## EMPLOYMENT AND WAGES AND SALARIES IN THE ENTERPRISE SECTOR

Average paid employment\*

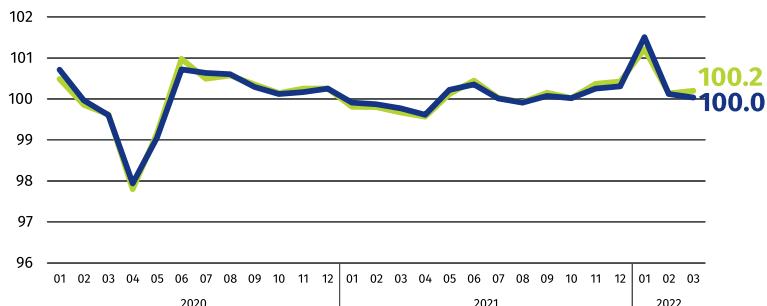
Mazowieckie Voivodship

**1572**  
thousand

m.st. Warszawa

**1115**  
thousand

previous month=100



Average monthly gross wages and salaries\*

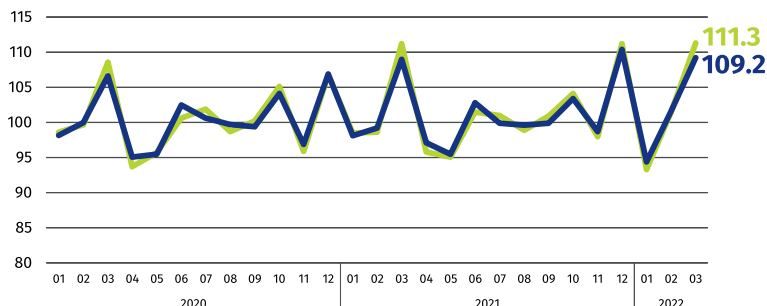
Mazowieckie Voivodship

**PLN 7947**

m.st. Warszawa

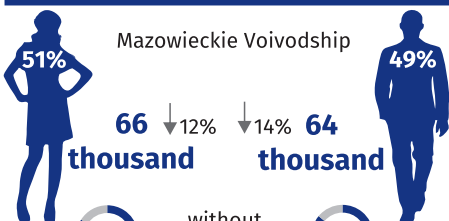
**PLN 8495**

previous month=100



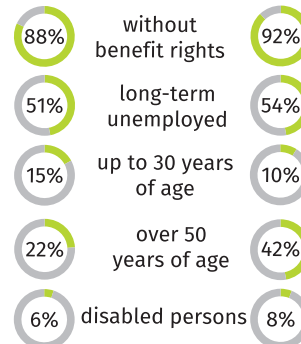
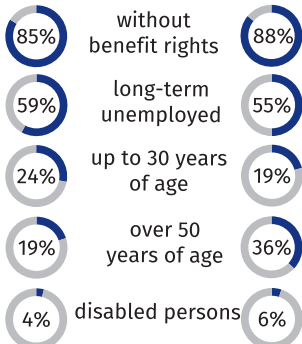
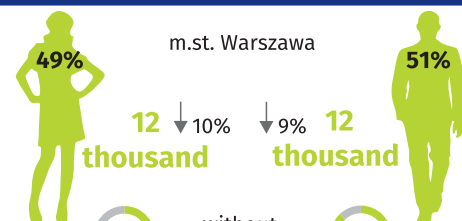
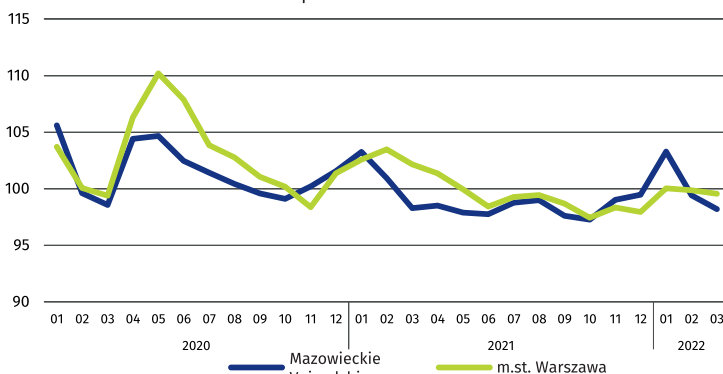
\* In enterprises with more than 9 employed persons.

## REGISTERED UNEMPLOYMENT



Dynamics of registered unemployed persons at the end of month

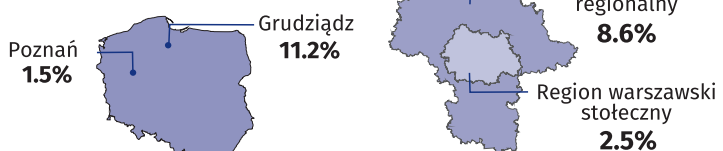
previous month=100



↓ decrease compared to March 2021

## REGISTERED UNEMPLOYMENT RATE

Cities with powiat status with the lowest and highest unemployment rate



Powiats with the lowest unemployment rate

m.st. Warszawa – 1.8% ↓ 0.2 pp  
warszawski zachodni – 1.9% ↓ 0.5 pp  
grójecki – 2.3% ↓ 0.6 pp

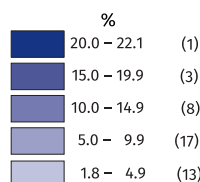
Powiats with the highest unemployment rate

szydłowiecki – 22.1% ↓ 1.8 pp  
makowski – 15.5% ↓  
radomski – 15.4% ↓ 2.1 pp

Powiats with the highest drops in unemployment rate

sierpecki ↓ 3.0 pp  
radomski ↓ 2.1 pp  
gostyniński, Radom ↓ 2.0 pp

↕ decrease/no changes compared to March 2021



Number of powiats in the brackets.

