

# Labour market in January in 2019

Data for Mazowieckie Voivodship and Warszawa capital city

## EMPLOYMENT AND WAGES AND SALARIES IN THE ENTERPRISE SECTOR

Average monthly employment\*

Mazowieckie Voivodship

**1527**  
thousand

Warszawa capital city

**1084**  
thousand

previous month=100

Average monthly gross wages and salaries\*

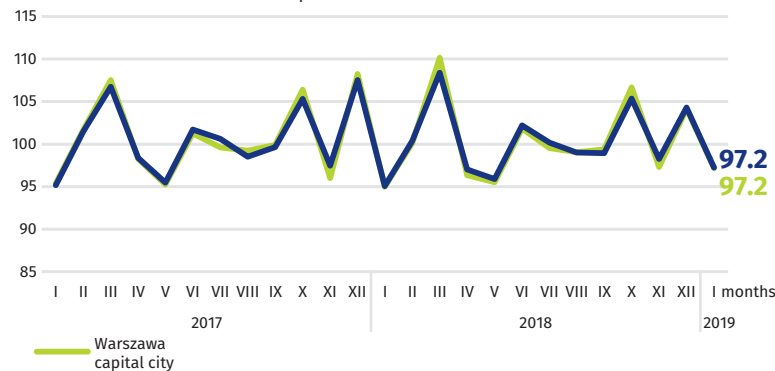
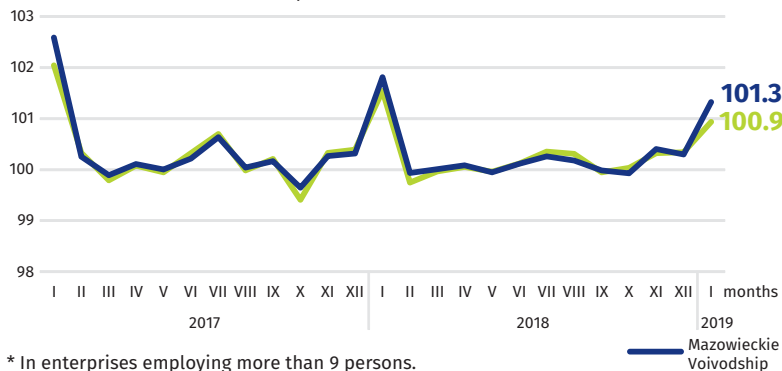
Mazowieckie Voivodship

**PLN 5919**

Warszawa capital city

**PLN 6273**

previous month=100

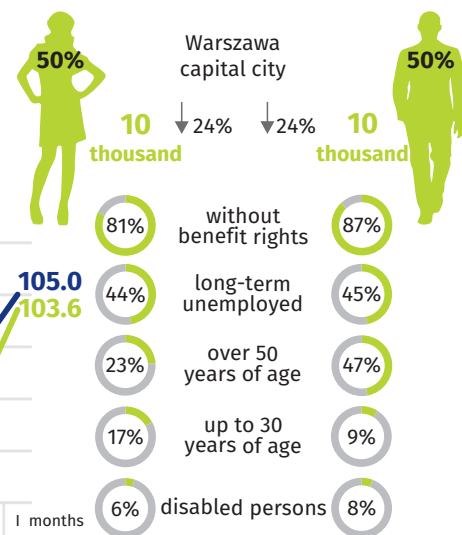
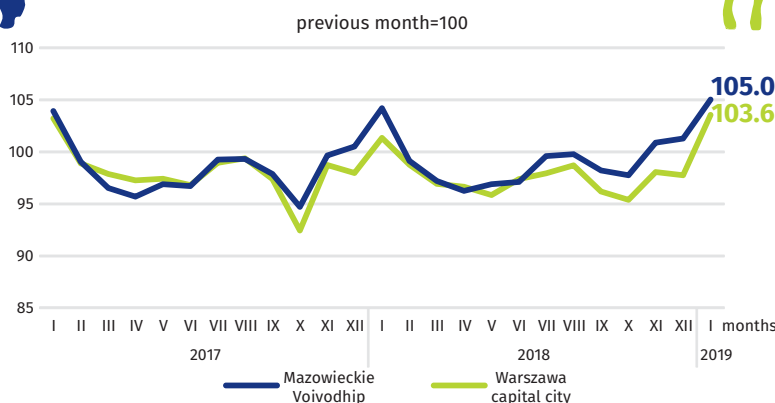
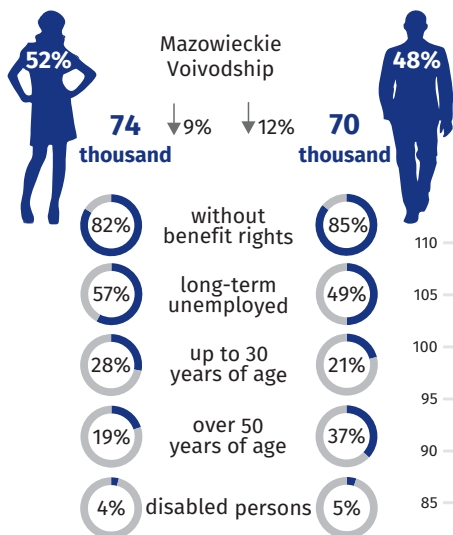


\* In enterprises employing more than 9 persons.

## REGISTERED UNEMPLOYMENT

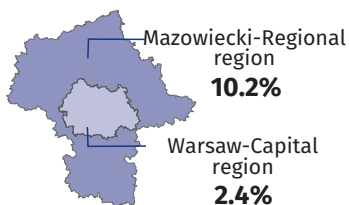
Dynamics of registered unemplyed persons at the end of month

previous month=100



## REGISTERED UNEMPLOYMENT RATE

Cities with powiat status with the lowest and highest unemployment rate



Powiats with the lowest unemployment rate

Warszawa capital city – **1.5%** ↓ 0.5 pp  
warszawski zachodni – **2.1%** ↓ 0.2 pp  
grójecki – **2.3%** ↓ 0.3 pp

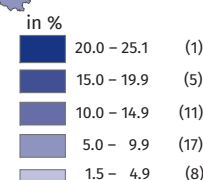
Powiats with the highest unemployment rate

szydłowiecki – **25.1%** ↓ 1.4 pp  
przysuski – **18.7%** ↓ 1.1 pp  
radomski – **18.0%** ↓ 1.4 pp

Powiats with the highest drops in unemployment rate

gostyniński ↓ 1.8 pp  
makowski ↓ 1.6 pp  
ostrołęcki ↓ 1.6 pp

↓ decrease compared to January 2018



Number of powiats in the brackets.

