

Labour market in February 2022

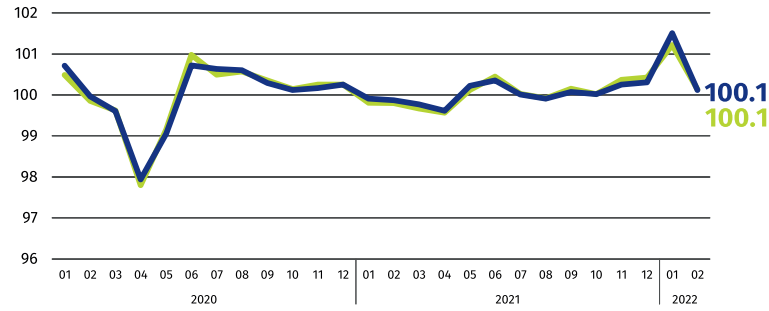
Data on Mazowieckie Voivodship and m.st. Warszawa

EMPLOYMENT AND WAGES AND SALARIES IN THE ENTERPRISE SECTOR

Average paid employment*

Mazowieckie Voivodship **1572 thousand**
m.st. Warszawa **1112 thousand**

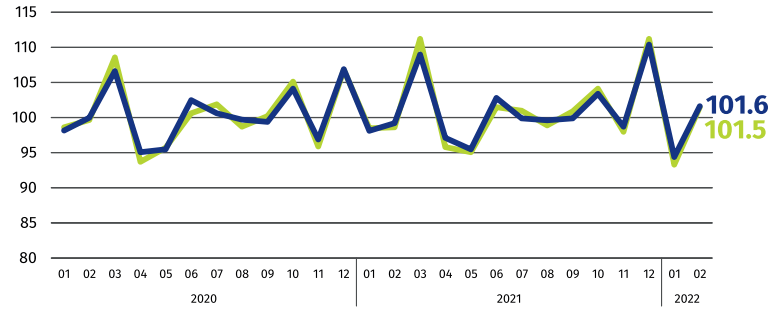
previous month=100



Average monthly gross wages and salaries*

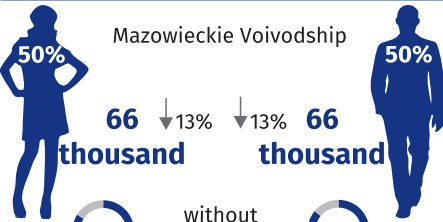
Mazowieckie Voivodship **PLN 7275**
m.st. Warszawa **PLN 7633**

previous month=100



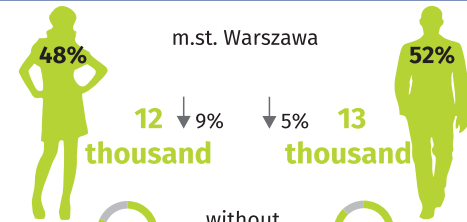
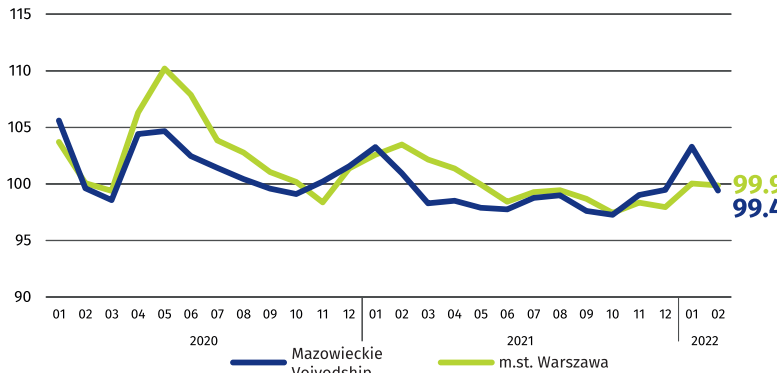
* In enterprises with more than 9 employed persons.

REGISTERED UNEMPLOYMENT



Dynamics of registered unemployed persons at the end of month

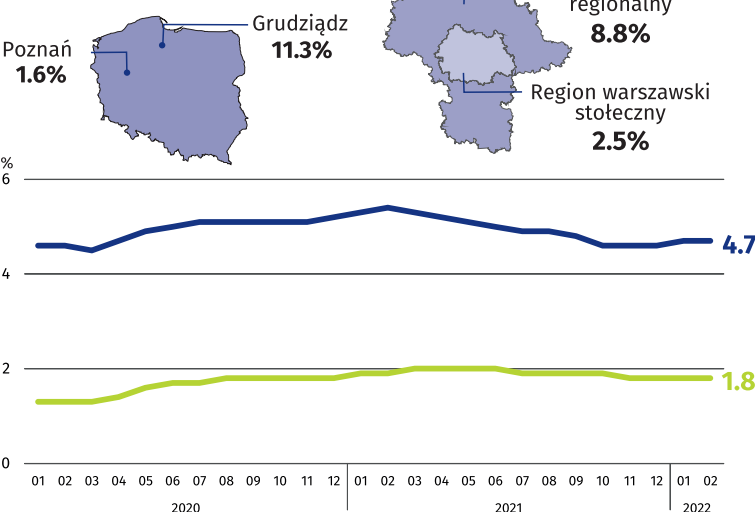
previous month=100



↓ decrease compared to February 2021

REGISTERED UNEMPLOYMENT RATE

Cities with powiat status with the lowest and highest unemployment rate



Powiats with the lowest unemployment rate

m.st. Warszawa – 1.8% ↓ 0.1 pp
warszawski zachodni – 2.0% ↓ 0.4 pp
grójecki – 2.2% ↓ 0.7 pp

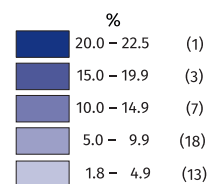
Powiats with the highest unemployment rate

sztytowiecki – 22.5% ↓ 2.1 pp
makowski – 16.6% ↑ 0.3 pp
radomski – 15.6% ↓ 2.4 pp

Powiats with the highest drops in unemployment rate

sierpecki ↓ 2.8 pp
radomski ↓ 2.4 pp
miński, sztytowiecki, ↓ 2.1 pp
Radom

↑↓ decrease/no changes compared to February 2021



Number of powiats in the brackets.

Rate the study

When publishing Statistical Office data – please indicate the source.