



Labour market in November 2021

Data on Mazowieckie Voivodship and m.st. Warszawa

EMPLOYMENT AND WAGES AND SALARIES IN THE ENTERPRISE SECTOR

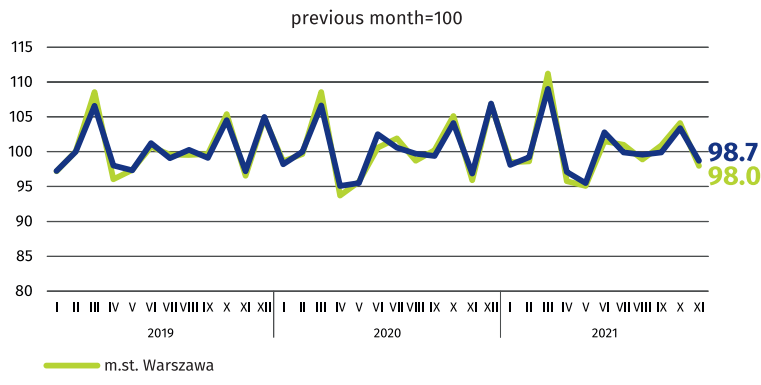
Average paid employment*

Mazowieckie Voivodship **1542 thousand**
m.st. Warszawa **1093 thousand**



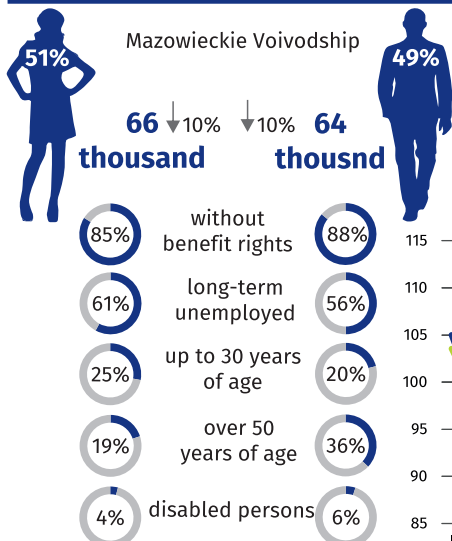
Average monthly gross wages and salaries*

Mazowieckie Voivodship **PLN 6876**
m.st. Warszawa **PLN 7249**

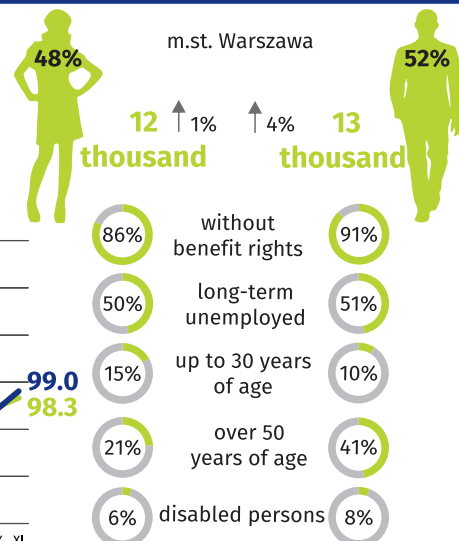
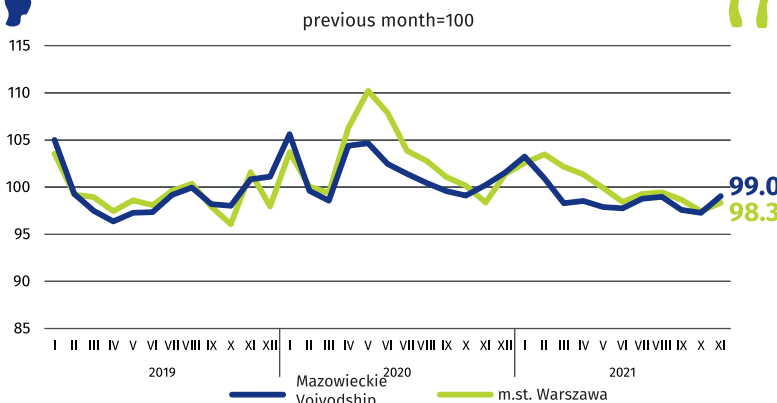


* In enterprises with more than 9 employed persons.

REGISTERED UNEMPLOYMENT



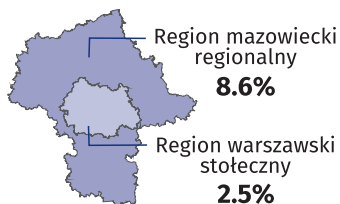
Dynamics of registered unemployed persons at the end of month



↑ ↓ increase/decrease compared to November 2020

REGISTERED UNEMPLOYMENT RATE

Cities with powiat status with the lowest and highest unemployment rate



Powiaty with the lowest unemployment rate

m.st. Warszawa – 1.8% ↓
warszawski zachodni – 2.0% ↓ 0.3 pp
grójecki – 2.1% ↓ 0.5 pp

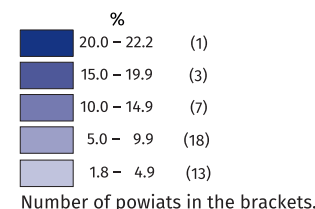
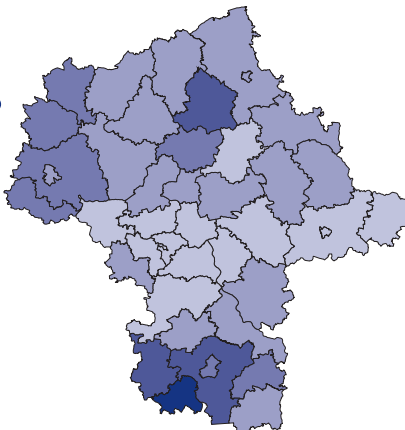
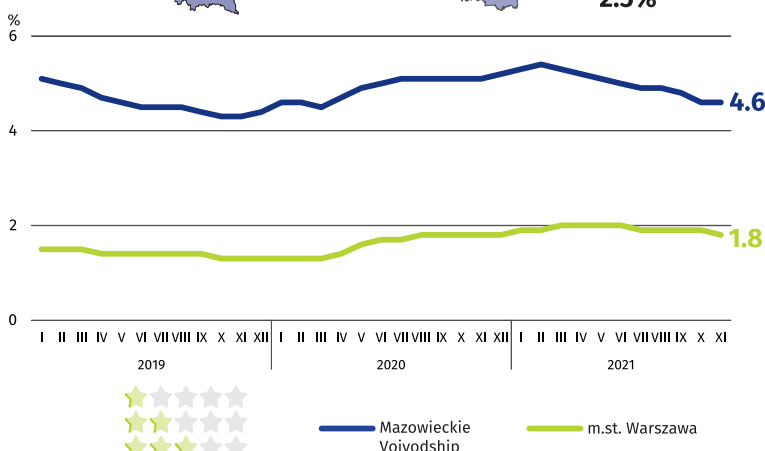
Powiaty with the highest unemployment rate

szymbarko – 22.2% ↓ 1.8 pp
makowski – 15.8% ↓ 0.1 pp
radomski – 15.2% ↓ 2.3 pp

Powiaty with the highest drops in unemployment rate

sierpecki ↓ 2.6 pp
radomski ↓ 2.3 pp
przysuski ↓ 2.2 pp

↑ ↓ decrease/no changes compared to November 2020



Rate
the study