

Labour market in July 2021

Data on Mazowieckie Voivodship and m.st. Warszawa

EMPLOYMENT AND WAGES AND SALARIES IN THE ENTERPRISE SECTOR

Average employment*

Average monthly gross wages and salaries*

Mazowieckie Voivodship

m.st. Warszawa

Mazowieckie Voivodship

m.st. Warszawa

1538
thousand

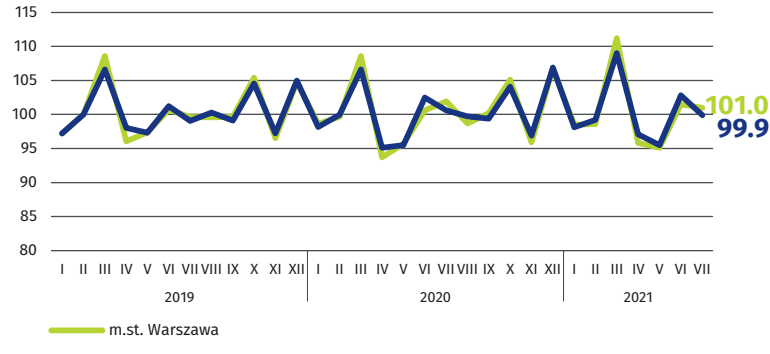
1088
thousand

PLN 6772

PLN 7121

previous month=100

previous month =100

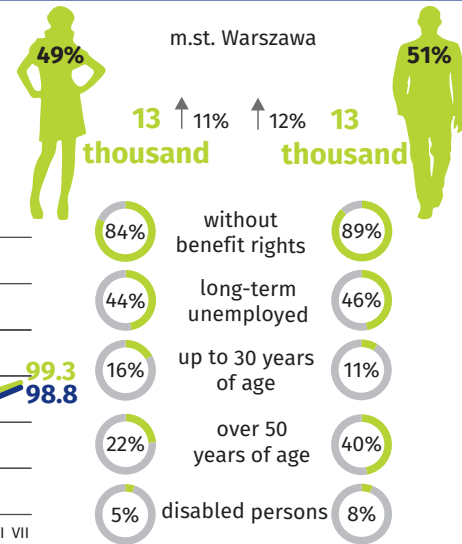
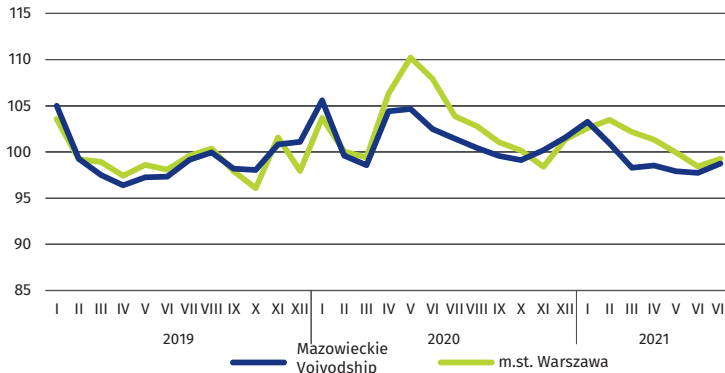
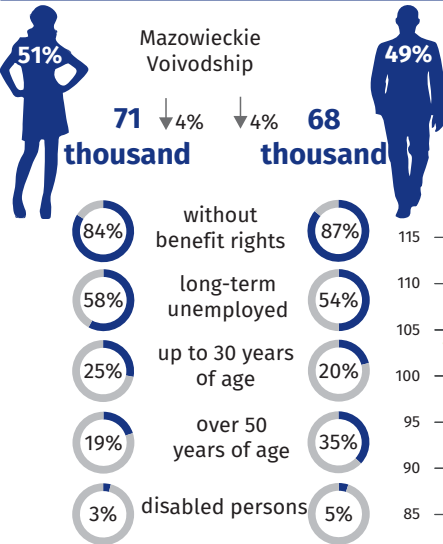


* In enterprises employing more than 9 persons.

REGISTERED UNEMPLOYMENT

Dynamics of registered unemployed persons at the end of month

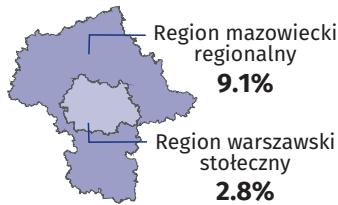
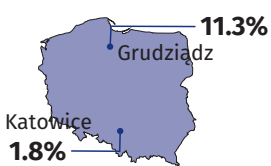
previous month=100



↑ ↓ increase/decrease compared to July 2020

REGISTERED UNEMPLOYMENT RATE

Cities with powiat status with the lowest and highest unemployment rate



Powiaty with the lowest unemployment rate

m.st. Warszawa – 1.9% ↑ 0.2 pp
warszawski zachodni – 2.2% ↔
grójecki – 2.4% ↓ 0.4 pp

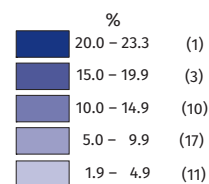
Powiaty with the highest unemployment rate

szydłowiecki – 23.3% ↓ 1.5 pp
radomski – 16.5% ↓ 1.7 pp
przysuski – 15.9% ↓ 1,6 pp

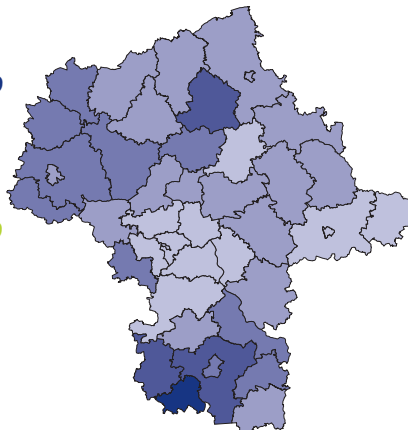
Powiaty with the highest drops in unemployment rate

sierpecki ↓ 2.1 pp
radomski ↓ 1.7 pp
przysuski ↓ 1.6 pp

↑ ↓ ↔ increase/decrease/no changes compared to July 2020



Number of powiaty in the brackets.



Rate
the study

When publishing Statistical Office data – please indicate the source.