

Labour market in June 2021

Data on Mazowieckie Voivodship and m.st. Warszawa

EMPLOYMENT AND WAGES AND SALARIES IN THE ENTERPRISE SECTOR

Average employment*

Mazowieckie Voivodship **1538 thousand**
m.st. Warszawa **1088 thousand**

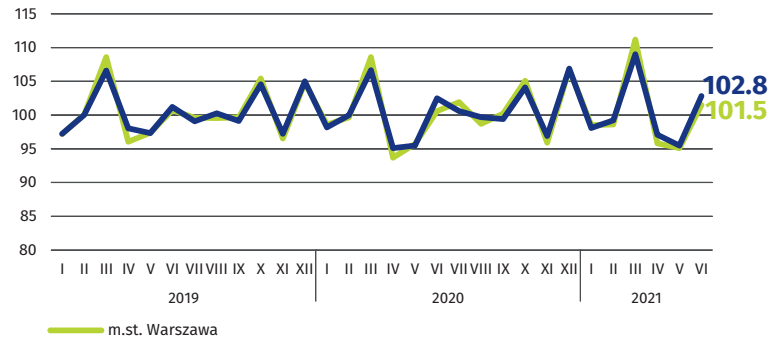
previous month=100



Average monthly gross wages and salaries*

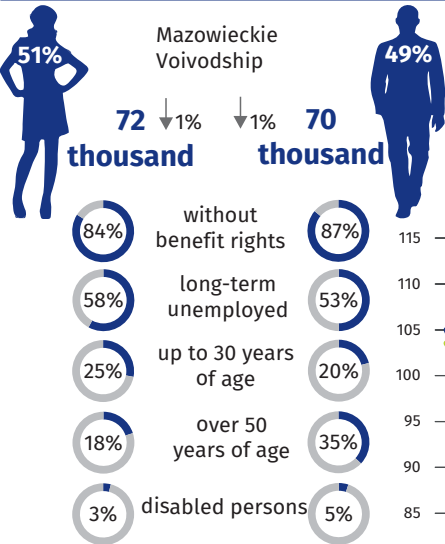
Mazowieckie Voivodship **PLN 6777**
m.st. Warszawa **PLN 7051**

previous month=100



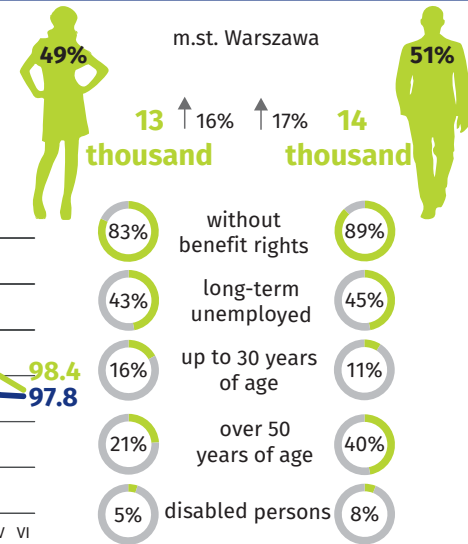
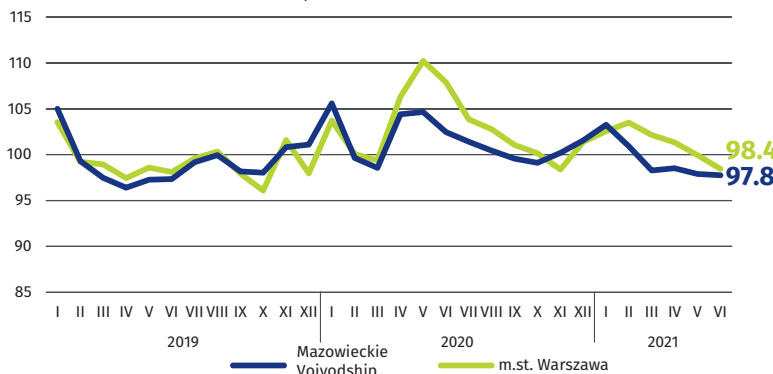
* In enterprises employing more than 9 persons.

REGISTERED UNEMPLOYMENT



Dynamics of registered unemployed persons at the end of month

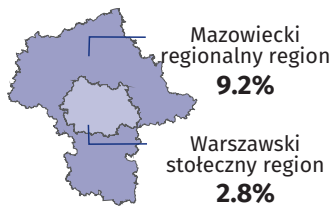
previous month=100



↑ ↓ increase/decrease compared to June 2020

REGISTERED UNEMPLOYMENT RATE

Cities with powiat status with the lowest/highest unemployment rate



Powiaty with the lowest unemployment rate

m.st. Warszawa - **2.0%** ↑ 0.3 pp
warszawski zachodni - **2.3%** ↑ 0.2 pp
grójecki - **2.5%** ↓ 0.2 pp

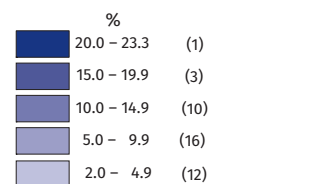
Powiaty with the highest unemployment rate

szydłowiecki - **23.3%** ↓ 1.3 pp
radomski - **16.7%** ↓ 1.5 pp
przysuski - **15.7%** ↓ 1.6 pp

Powiaty with the highest drops in unemployment rate

sierpecki ↓ 1.8 pp
przysuski ↓ 1.6 pp
radomski ↓ 1.5 pp

↑ ↓ increase/decrease compared to June 2020



Number of powiaty in the brackets.

Rate the study

When publishing Statistical Office data - please indicate the source.