

Labour market in February in 2019

Data for Mazowieckie Voivodship and Warszawa capital city

EMPLOYMENT AND WAGES AND SALARIES IN THE ENTERPRISE SECTOR

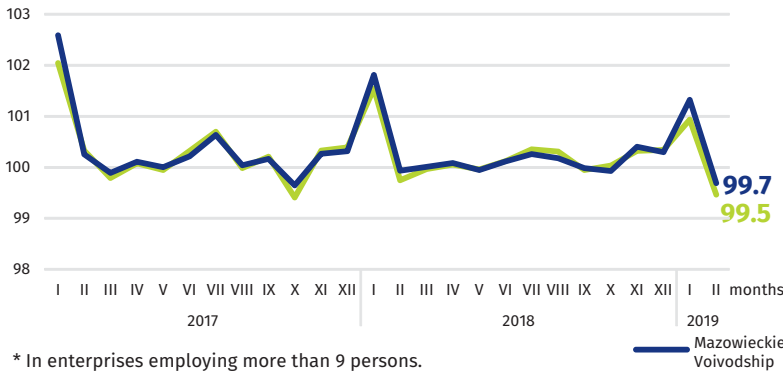
Average monthly employment*

Mazowieckie Voivodship Warszawa capital city

1522
thousand

1078
thousand

previous month=100



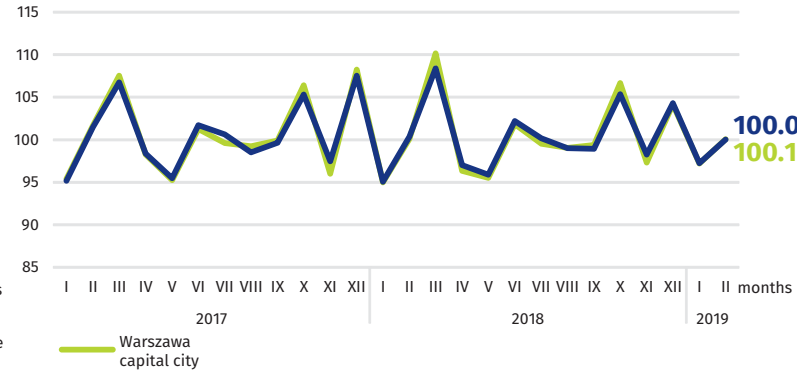
Average monthly gross wages and salaries*

Mazowieckie Voivodship Warszawa capital city

PLN 5920

PLN 6276

previous month=100

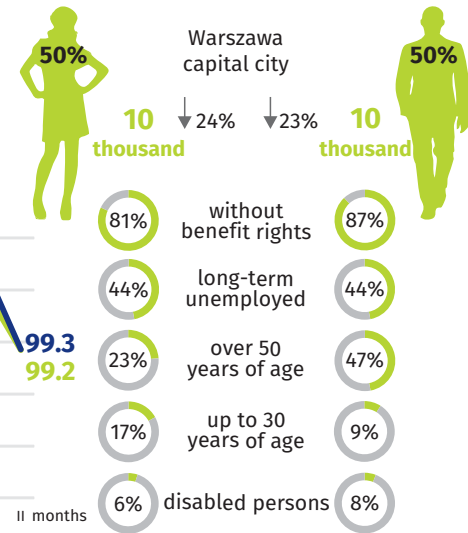
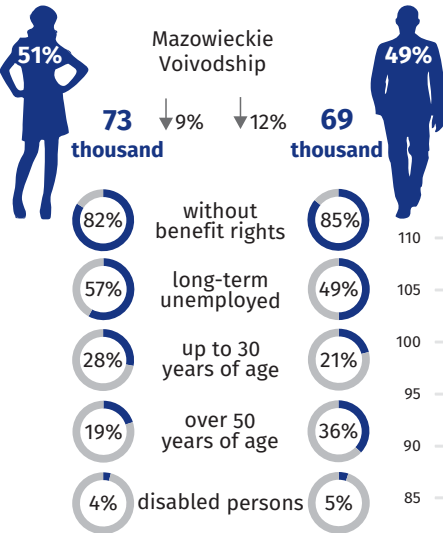
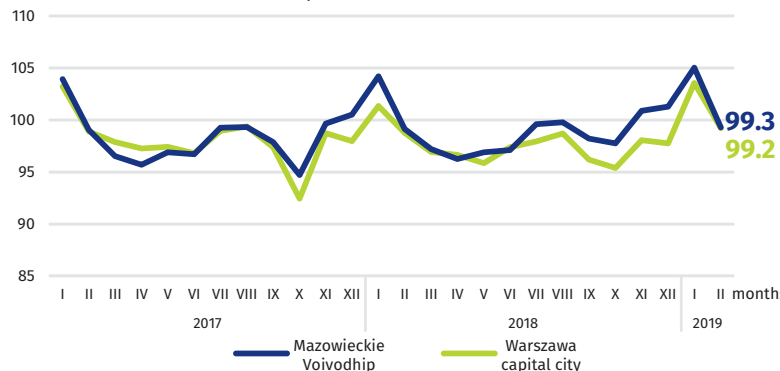


* In enterprises employing more than 9 persons.

REGISTERED UNEMPLOYMENT

Dynamics of registered unemplyed persons at the end of month

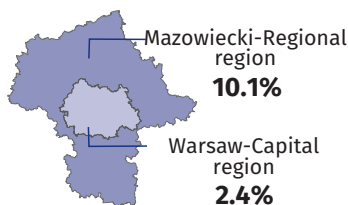
previous month=100



↓ decrease compared to February 2018

REGISTERED UNEMPLOYMENT RATE

Cities with powiat status with the lowest and highest unemployment rate



Powiats with the lowest unemployment rate

Warszawa capital city – **1.5%** ↓ 0.5 pp
warszawski zachodni – **2.1%** ↓ 0.2 pp
grójecki – **2.3%** ↓ 0.3 pp

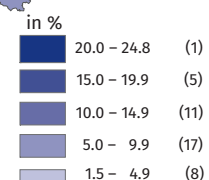
Powiats with the highest unemployment rate

szydłowiecki – **24.8%** ↓ 1.5 pp
przysuski – **18.4%** ↓ 1.0 pp
radomski – **17.9%** ↓ 1.2 pp

Powiats with the highest drops in unemployment rate

gostyniński ↓ 1.8 pp
ostrołęcki ↓ 1.5 pp
szydłowiecki ↓ 1.5 pp

↓ decrease compared to February 2018



Number of powiats in the brackets.

