

# Labour market in May 2021

Data on Mazowieckie Voivodship and m.st. Warszawa

## EMPLOYMENT AND WAGES AND SALARIES IN THE ENTERPRISE SECTOR

Average employment\*

Mazowieckie Voivodship **1532 thousand**  
m.st. Warszawa **1083 thousand**

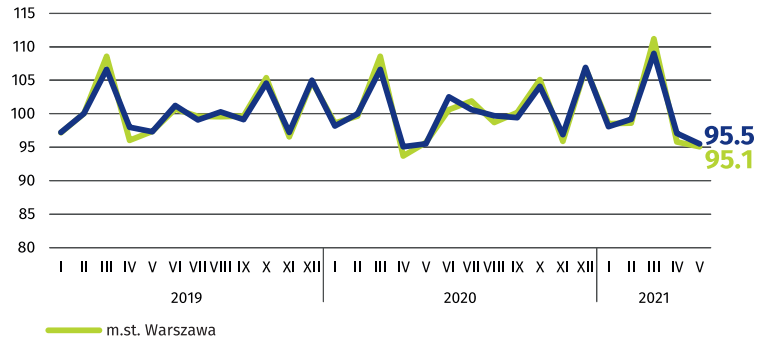
previous month = 100



Average monthly gross wages and salaries\*

Mazowieckie Voivodship **PLN 6594**  
m.st. Warszawa **PLN 6949**

previous month = 100

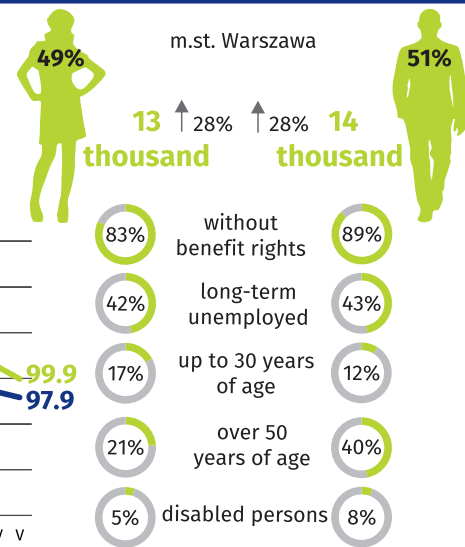
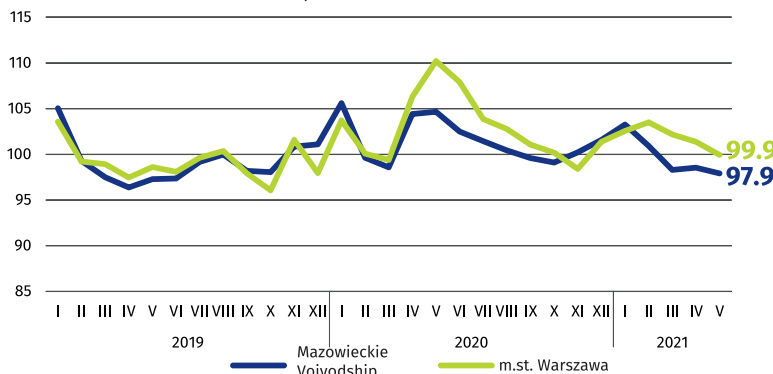
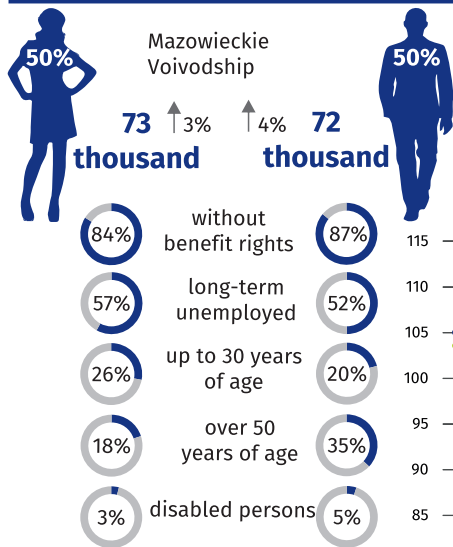


\* In enterprises employing more than 9 persons.

## REGISTERED UNEMPLOYMENT

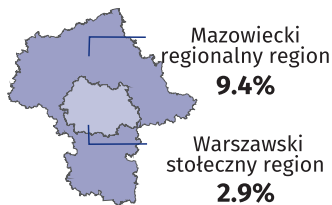
Dynamics of registered unemployed persons at the end of month

previous month = 100



## REGISTERED UNEMPLOYMENT RATE

Cities with powiat status with the lowest/highest unemployment rate



Powiats with the lowest unemployment rate

m.st. Warszawa - 2.0% ↑ 0.4 pp  
warszawski zachodni - 2.3% ↑ 0.2 pp  
grójecki - 2.7% ↑ 0.1 pp

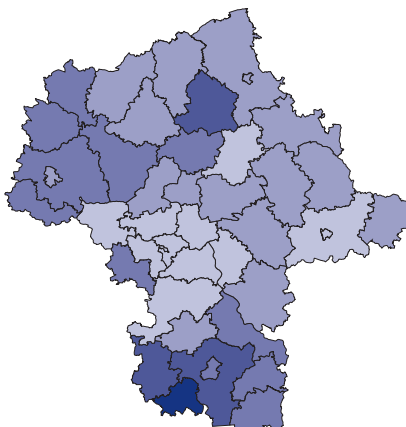
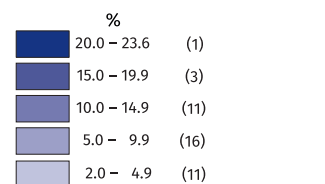
Powiats with the highest unemployment rate

szymbarko - 23.6% ↓ 0.5 pp  
radomski - 17.0% ↓ 1.0 pp  
przysuski - 16.1% ↓ 1.5 pp

Powiats with the highest drops in unemployment rate

płoński ↑ 1.3 pp  
legionowski ↑ 0.9 pp  
wołomiński, żyrardowski ↑ 0.8 pp

↑ ↓ increase/decrease compared to May 2020



↑ compared to May 2020