

Labour market in February 2021

Data on Mazowieckie Voivodship and m.st. Warszawa

EMPLOYMENT AND WAGES AND SALARIES IN THE ENTERPRISE SECTOR

Average employment*

Average monthly gross wages and salaries*

1538
thousand

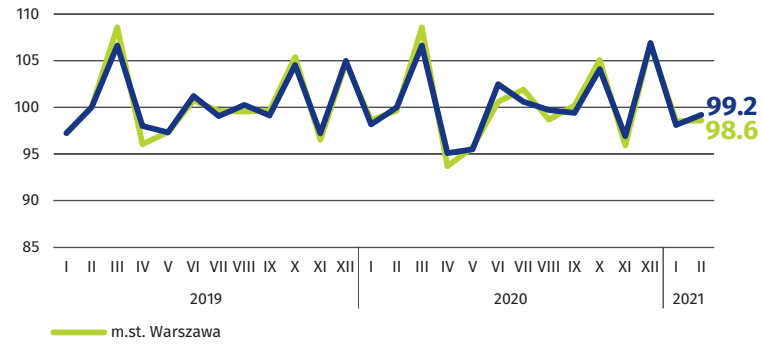
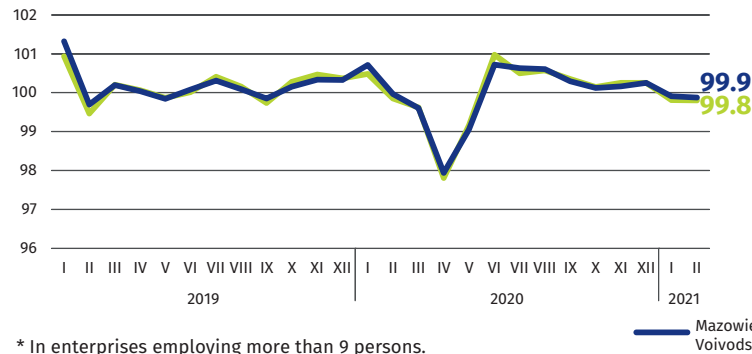
m.st. Warszawa
1090
thousand

PLN 6520

m.st. Warszawa
PLN 6855

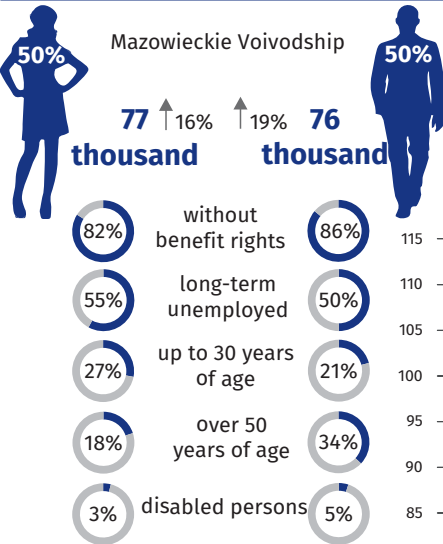
previous month =100

previous month =100

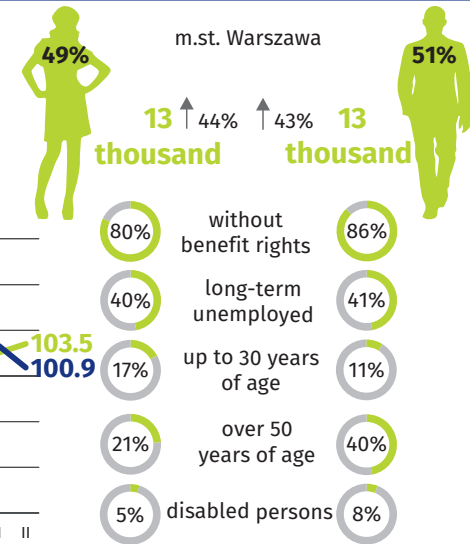
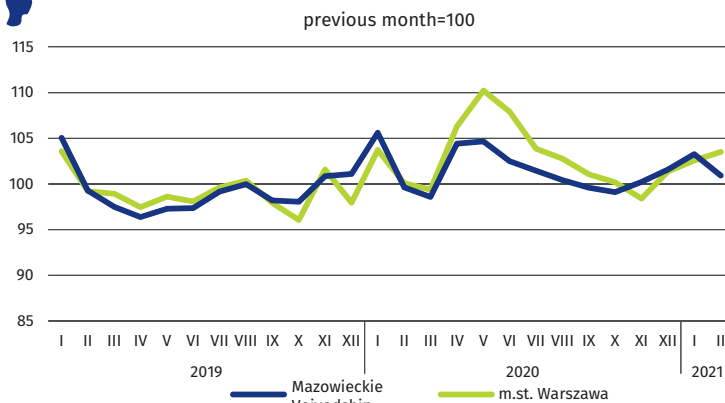


* In enterprises employing more than 9 persons.

REGISTERED UNEMPLOYMENT



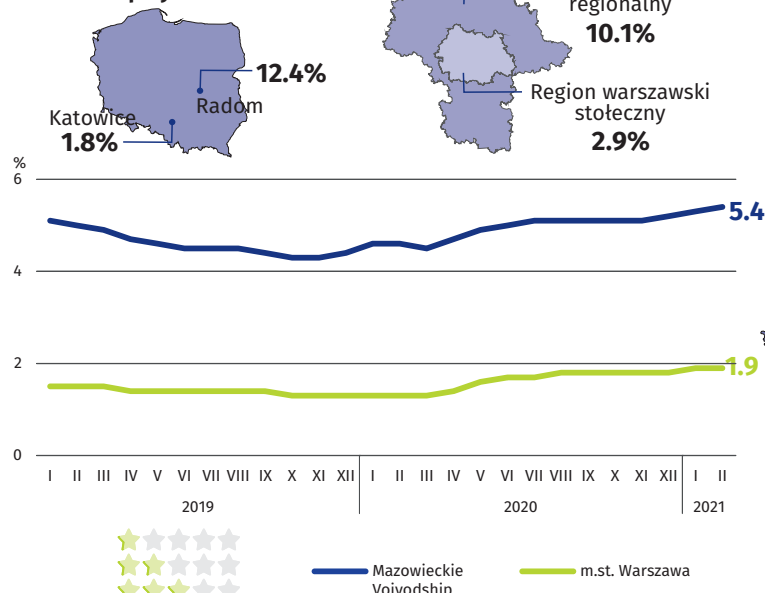
Dynamics of registered unemployed persons at the end of month



↑ increase compared to February 2020

REGISTERED UNEMPLOYMENT RATE

Cities with powiat status with the lowest/highest unemployment rate



Powiaty with the lowest unemployment rate

m.st. Warszawa – 1.9% ↑ 0.6 pp
warszawski zachodni – 2.4% ↑ 0.7 pp
grójecki – 2.8% ↑ 0.6 pp

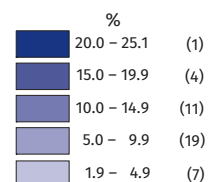
Powiaty with the highest unemployment rate

szydłowiecki – 25.1% ↑ 0.9 pp
radomski – 18.1% ↑ 1.0 pp
przysuski – 17.0% ↓ 0.6 pp

Powiaty with the highest drops in unemployment rate

wyszakowski ↑ 2.0 pp
legionowski, wołomiński ↑ 1.9 pp
miński ↑ 1.8 pp

↑ ↓ increase/decrease compared to February 2020



W nawiasach podano liczbę powiatów.