

Labour market in November 2020

Data on Mazowieckie Voivodship and Warsaw capital city

EMPLOYMENT AND WAGES AND SALARIES IN THE ENTERPRISE SECTOR

Average employment*

Average monthly gross wages and salaries*

Mazowieckie Voivodship

Warsaw capital city

Mazowieckie Voivodship

Warsaw capital city

1538
thousand

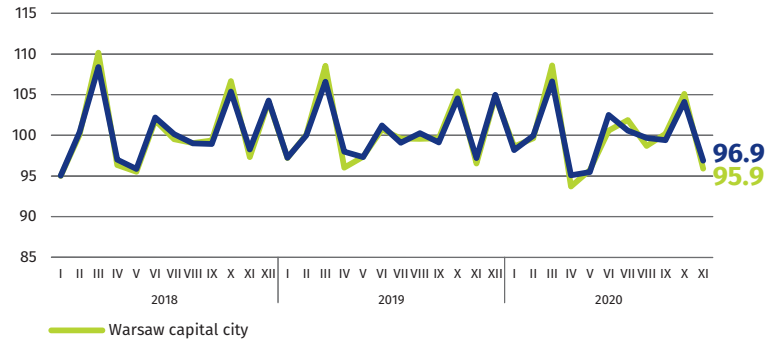
1091
thousand

PLN 6267

PLN 6608

previous month=100

previous month=100



* In enterprises employing more than 9 persons.

REGISTERED UNEMPLOYMENT

Mazowieckie Voivodship

Warsaw capital city

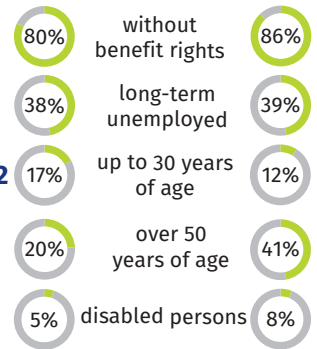
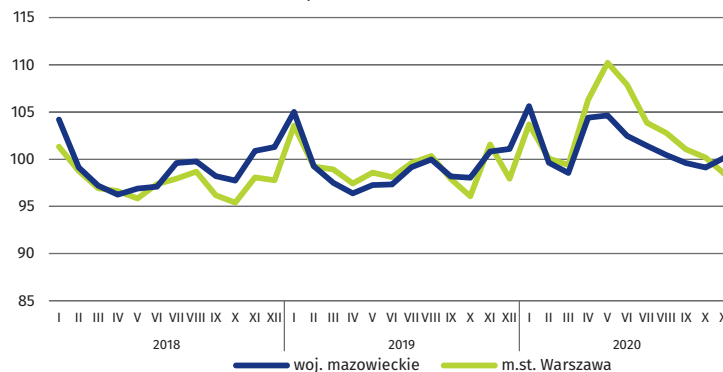
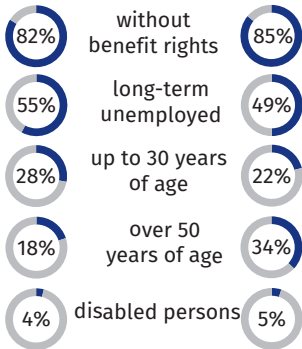


73 ↑15% ↑22% **71**
thousand thousand

Dynamics of registered unemployed persons
at the end of month

12 ↑34% ↑37% **12**
thousand thousand

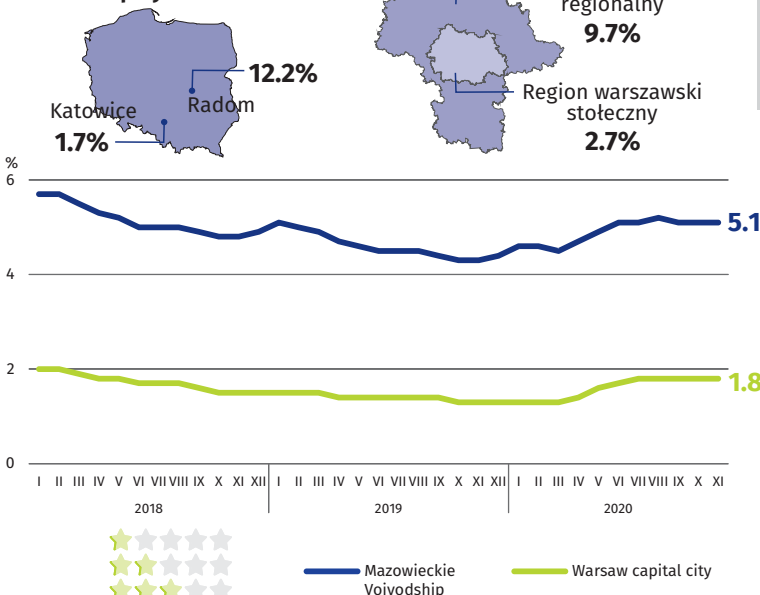
previous month=100



↑ increase compared to November 2019

REGISTERED UNEMPLOYMENT RATE

Cities with powiat status
with the lowest/highest
unemployment rate



Powiats with the lowest
unemployment rate

m.st. Warszawa – **1.8%** ↑0.5 pp
warszawski zachodni – **2.3%** ↑0.7 pp
grójecki – **2.6%** ↑0.6 pp

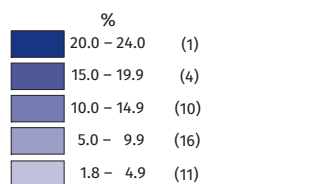
Powiats with the highest
unemployment rate

szydłowiecki – **24.0%** ↑1.6 pp
radomski – **17.5%** ↑1.5 pp
przysuski – **17.2%** ↓0.3 pp

Powiats with the highest drops
in unemployment rate

gostyniński ↑2.3 pp
zwoleński ↑2.0 pp
legionowski, miński ↑1.8 pp

↑ ↓ increase/decrease compared to November 2019



Rate
the study

When publishing Statistical Office data – please indicate the source.