

Labour market in October 2020

Data on Mazowieckie Voivodship and Warsaw capital city

EMPLOYMENT AND WAGES AND SALARIES IN THE ENTERPRISE SECTOR

Average employment*

Average monthly gross wages and salaries*

Mazowieckie Voivodship

Warsaw capital city

Mazowieckie Voivodship

Warsaw capital city

1535
thousand

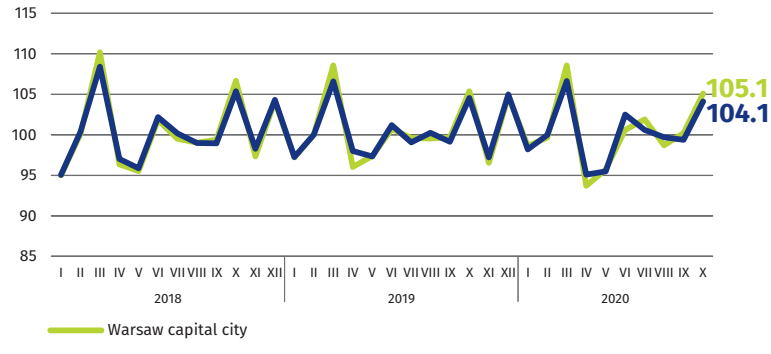
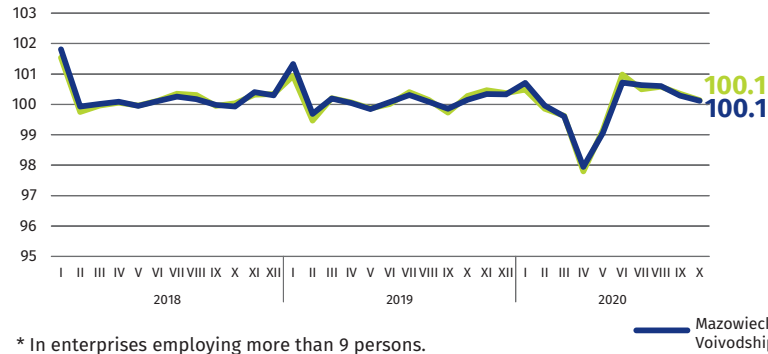
1088
thousand

PLN 6470

PLN 6892

previous month=100

previous month=100

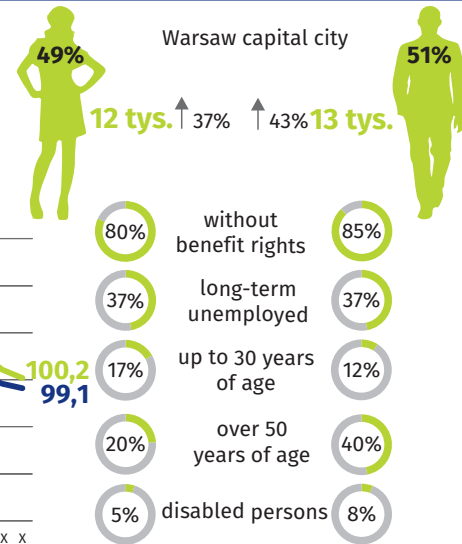
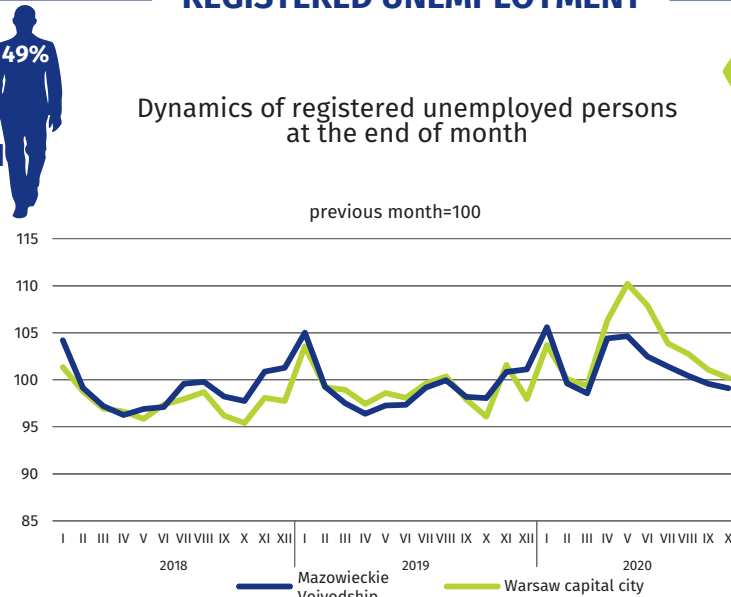
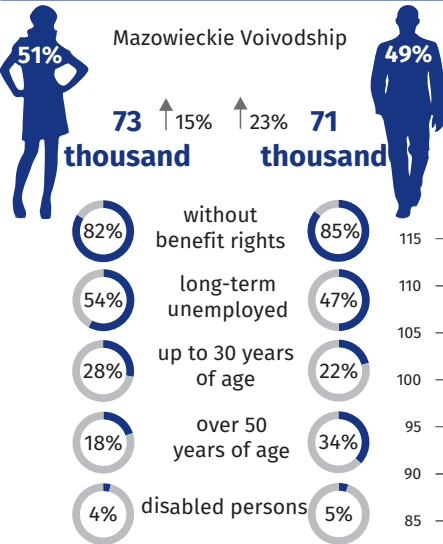


* In enterprises employing more than 9 persons.

REGISTERED UNEMPLOYMENT

Dynamics of registered unemployed persons at the end of month

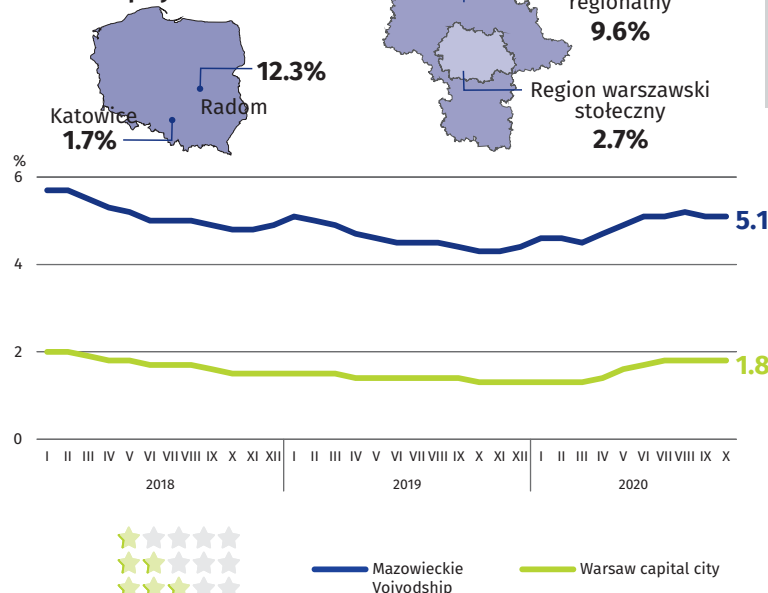
previous month=100



↑ wzrost w stosunku do października 2019 r.

REGISTERED UNEMPLOYMENT RATE

Cities with powiat status with the lowest/highest unemployment rate



Powiaty with the lowest unemployment rate

m.st. Warszawa – 1.8% ↑ 0.5 pp
warszawski zachodni – 2.2% ↑ 0.6 pp
grójecki – 2.6% ↑ 0.6 pp

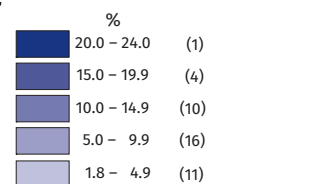
Powiaty with the highest unemployment rate

sztytowiecki – 24.0% ↑ 2.0 pp
radomski – 17.5% ↑ 1.6 pp
przysuski – 16.6% ↓ 0.9 pp

Powiaty with the highest drops in unemployment rate

gostyniński ↑ 2.4 pp
sztytowiecki, zwoleniński ↑ 2.0 pp
legionowski ↑ 1.7 pp

↑ ↓ increase/decrease compared to October 2019



Number of powiaty in the brackets.