

Labour market in August 2020

Data on Mazowieckie Voivodship and Warsaw capital city

EMPLOYMENT AND WAGES AND SALARIES IN THE ENTERPRISE SECTOR

Average employment*

Average monthly gross wages and salaries*

Mazowieckie Voivodship

Warsaw capital city

Mazowieckie Voivodship

Warsaw capital city

1529
thousand

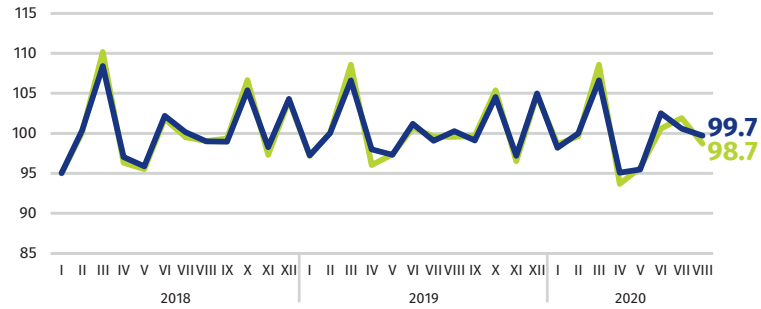
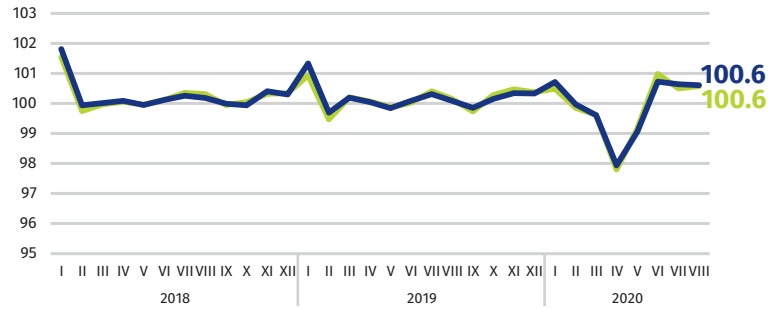
1083
thousand

PLN 6253

PLN 6540

previous month=100

previous month=100

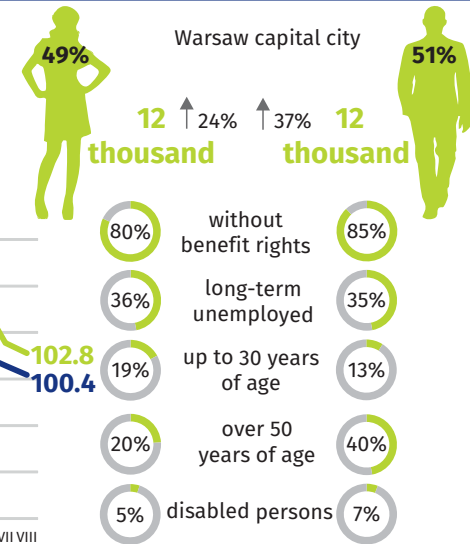
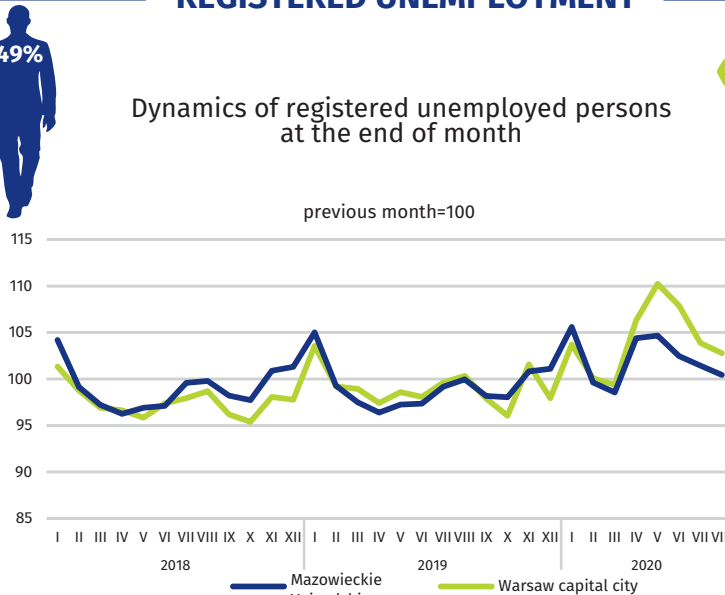
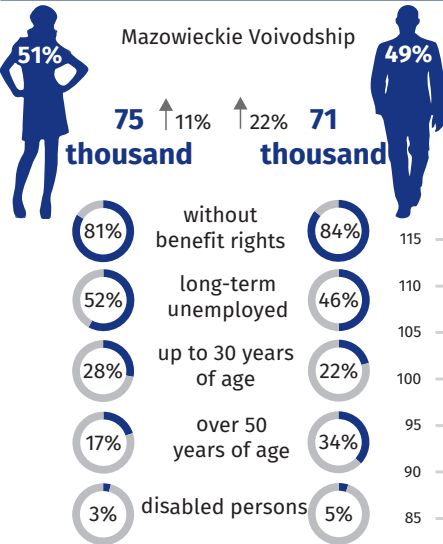


* In enterprises employing more than 9 persons.

REGISTERED UNEMPLOYMENT

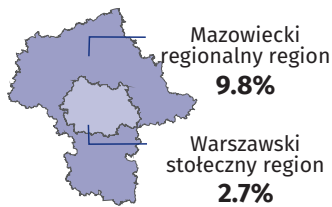
Dynamics of registered unemployed persons at the end of month

previous month=100



REGISTERED UNEMPLOYMENT RATE

Cities with powiat status with the lowest/highest unemployment rate



Powiats with the lowest unemployment rate

m.st. Warszawa – **1.8%** ↑ 0.4 pp
warszawski zachodni – **2.2%** ↑ 0.5 pp
grójecki – **2.8%** ↑ 0.9 pp

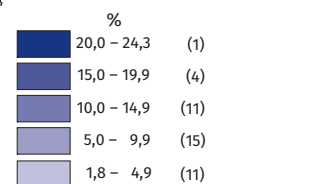
Powiats with the highest unemployment rate

szydłowiecki – **24.3%** ↑ 1.4 pp
radomski – **18.1%** ↑ 1.8 pp
przysuski – **17.1%** ↓ 1.0 pp

Powiats with the highest drops in unemployment rate

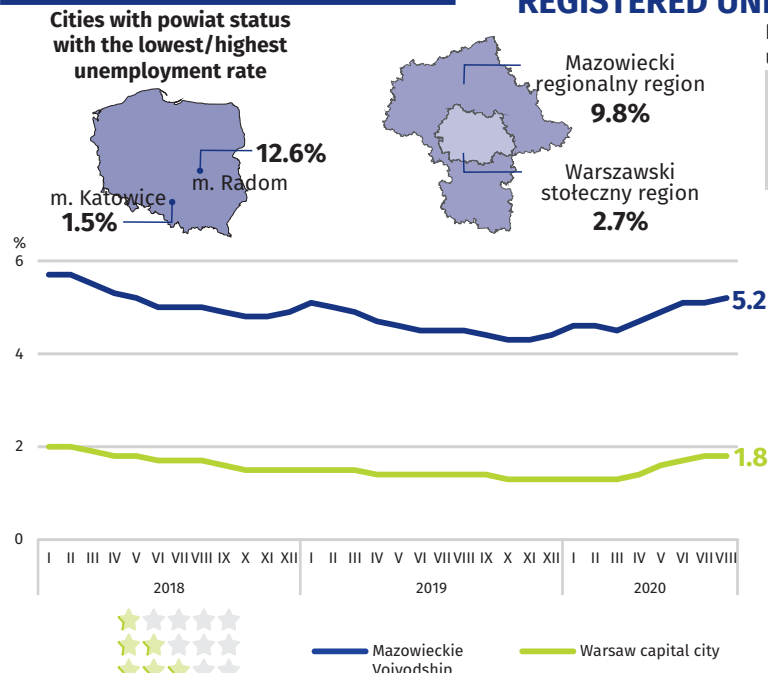
zwoleński ↑ 2.1 pp
gostyniński, wyszkowski ↑ 1.9 pp
radomski ↑ 1.8 pp

↑ ↓ increase/decrease compared to August 2019



Number of powiats in the brackets.

↑ Increase compared to August 2019



Rate the study

When publishing Statistical Office data – please indicate the source.