

# Labour market in March in 2019

Data for Mazowieckie Voivodship and Warszawa capital city

## EMPLOYMENT AND WAGES AND SALARIES IN THE ENTERPRISE SECTOR

Average monthly employment\*

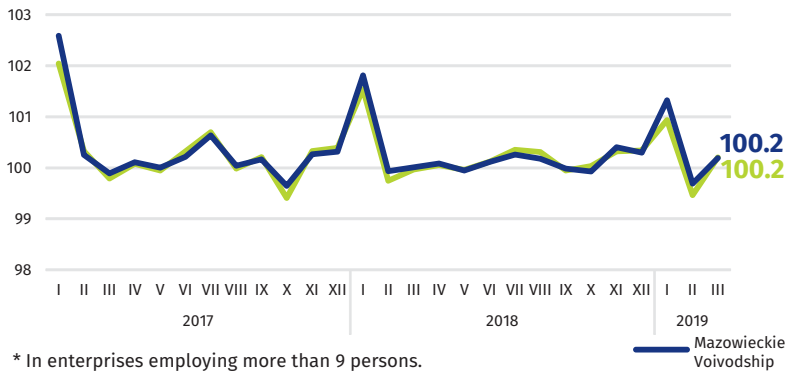
Mazowieckie Voivodship

**1525**  
thousand

Warszawa capital city

**1080**  
thousand

previous month=100



Average monthly gross wages and salaries\*

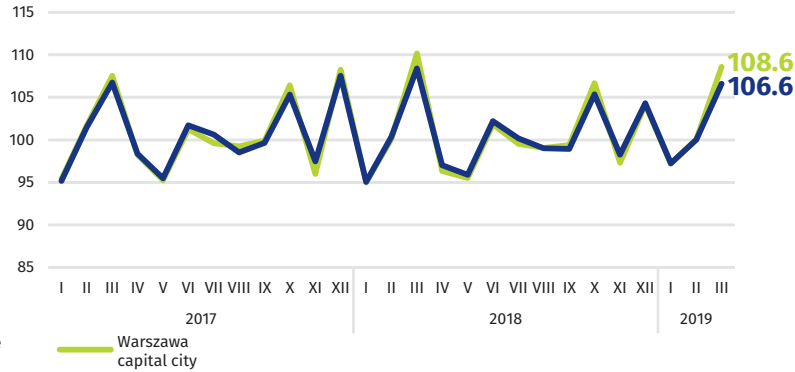
Mazowieckie Voivodship

**PLN 6311**

Warszawa capital city

**PLN 6814**

previous month=100

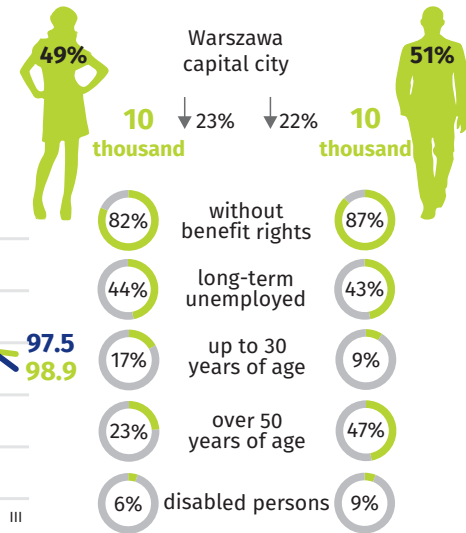
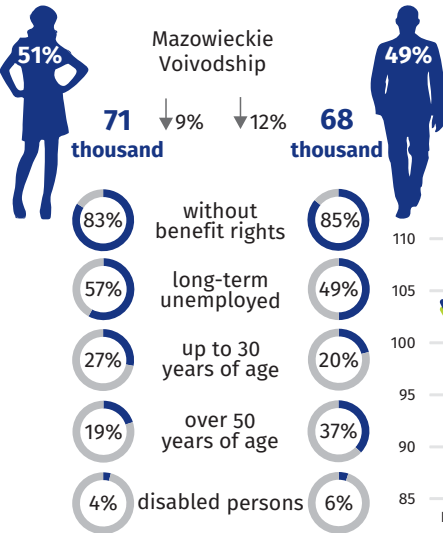
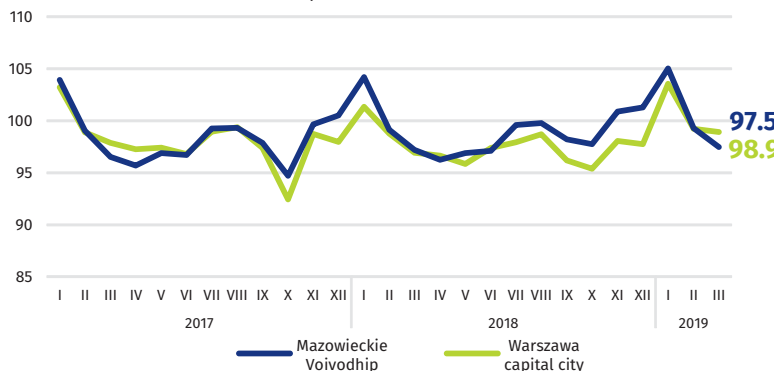


\* In enterprises employing more than 9 persons.

## REGISTERED UNEMPLOYMENT

Dynamics of registered unmemployed persons at the end of month

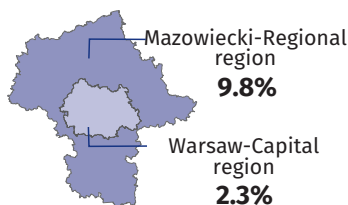
previous month=100



↓ decrease compared to March 2018

## REGISTERED UNEMPLOYMENT RATE

Cities with powiat status with the lowest and highest unemployment rate



Powiats with the lowest unemployment rate

Warszawa capital city – **1.5%** ↓ 0.4 pp  
warszawski zachodni – **2.0%** ↓ 0.2 pp  
grójecki – **2.2%** ↓ 0.3 pp

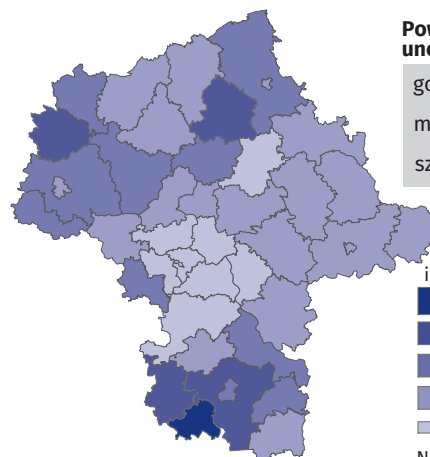
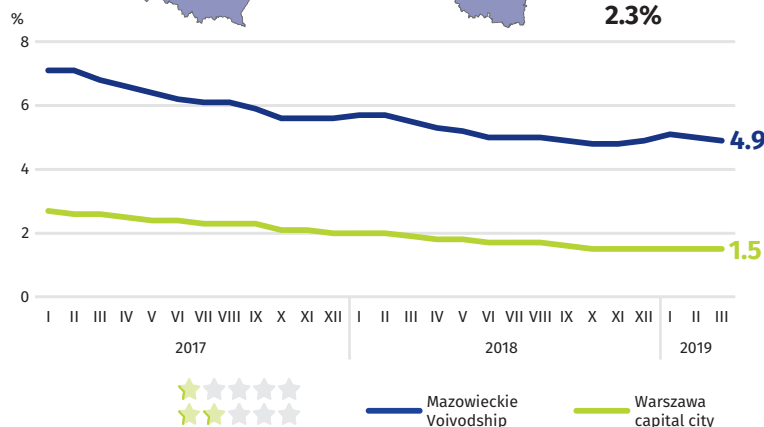
Powiats with the highest unemployment rate

szydłowiecki – **24.3%** ↓ 1.5 pp  
przysuski – **17.9%** ↓ 1.2 pp  
radomski – **17.4%** ↓ 1.2 pp

Powiats with the highest drops in unemployment rate

gostyniński ↓ 1.9 pp  
makowski ↓ 1.6 pp  
szydłowiecki ↓ 1.5 pp

↓ decrease compared to March 2018



in %

- 20.0 – 24.3 (1)
- 15.0 – 19.9 (4)
- 10.0 – 14.9 (10)
- 5.0 – 9.9 (19)
- 1.5 – 4.9 (8)

Number of powiats in the brackets.