

# Labour market in September in 2020

Data on Mazowieckie Voivodship and Warsaw capital city

## EMPLOYMENT AND WAGES AND SALARIES IN THE ENTERPRISE SECTOR

Average employment\*

Average monthly gross wages and salaries\*

Mazowieckie Voivodship

Warsaw capital city

Mazowieckie Voivodship

Warsaw capital city

**1533**  
thousand

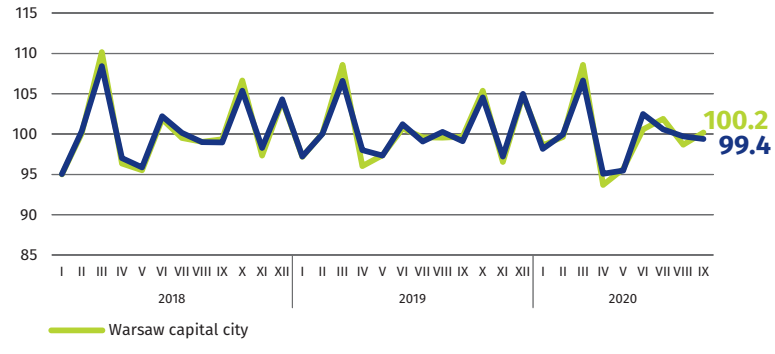
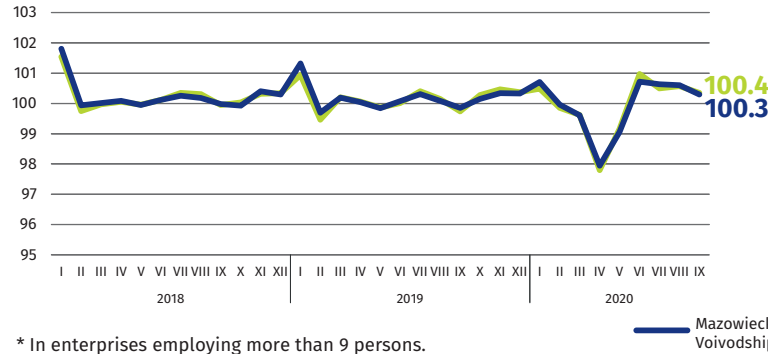
**1087**  
thousand

**PLN 6218**

**PLN 6555**

previous month=100

previous month=100



\* In enterprises employing more than 9 persons.

## REGISTERED UNEMPLOYMENT

Mazowieckie Voivodship

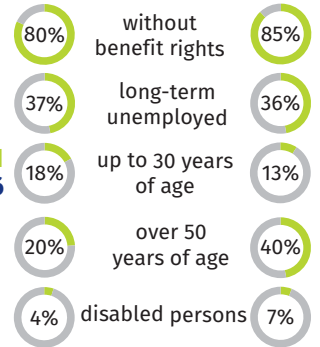
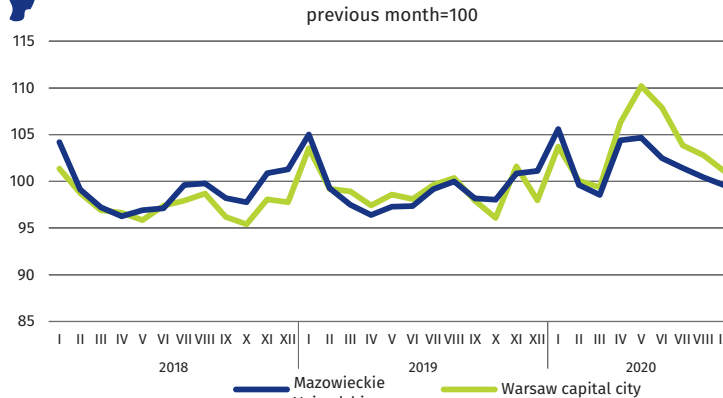
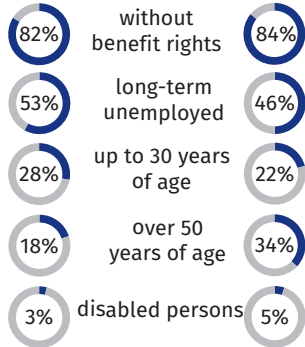
Warsaw capital city



**74** ↑14% ↑22% **71**  
thousand thousand

Dynamics of registered unemployed persons at the end of month

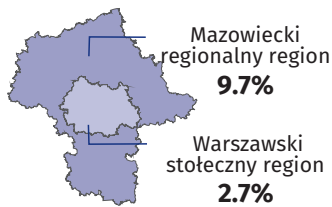
**12** ↑30% ↑39% **13**  
thousand thousand



↑ increase compared to September 2019

## REGISTERED UNEMPLOYMENT RATE

Cities with powiat status with the lowest/highest unemployment rate



Powiaty with the lowest unemployment rate

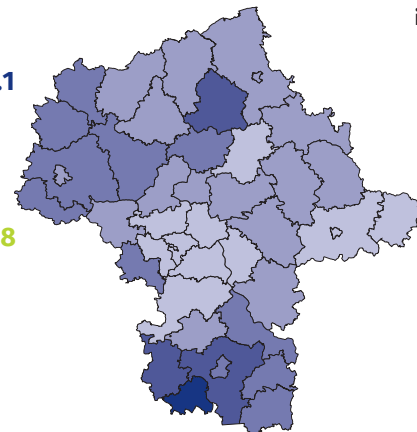
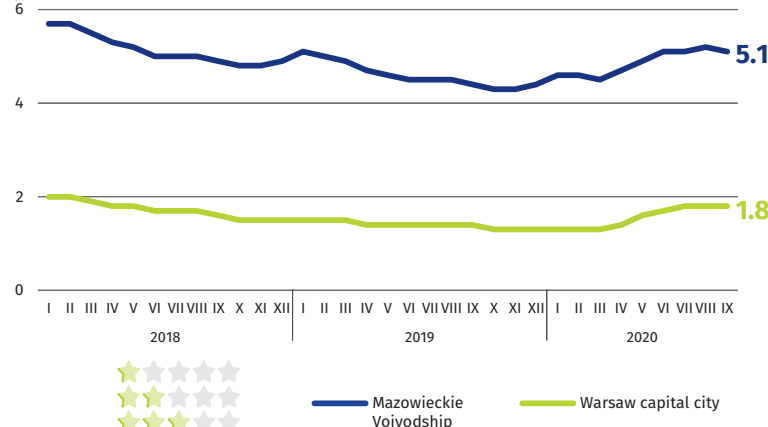
m.st. Warszawa – 1.8% ↑ 0.4 pp  
warszawski zachodni – 2.2% ↑ 0.6 pp  
grójecki – 2.7% ↑ 0.8 pp

Powiaty with the highest unemployment rate

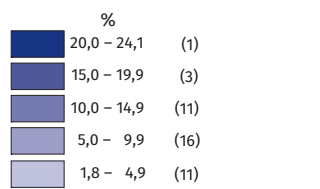
sztytowiecki – 24.1% ↑ 1.9 pp  
radomski – 17.9% ↑ 1.7 pp  
przysuski – 16.8% ↓ 1.1 pp

Powiaty with the highest drops in unemployment rate

gostyniński, zwoleński ↑ 2.0 pp  
sztytowiecki ↑ 1.9 pp  
wyszowski ↑ 1.8 pp



↑ ↓ increase/decrease compared to September 2019



Rate the study

When publishing Statistical Office data – please indicate the source.