

Labour market in June 2020

Data on Mazowieckie Voivodship and Warsaw capital city

EMPLOYMENT AND WAGES AND SALARIES IN THE ENTERPRISE SECTOR

Average employment*

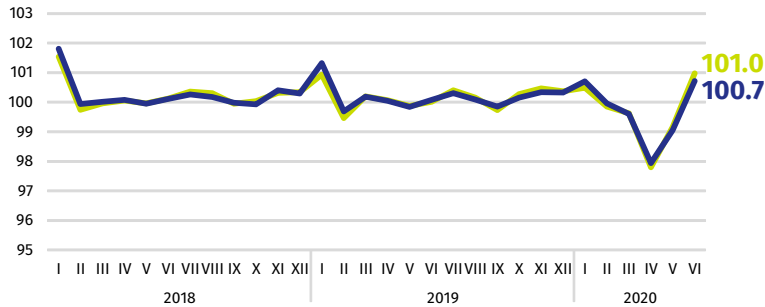
Mazowieckie Voivodship

1510 thousand

Warsaw capital city

1071 thousand

previous month=100



Average monthly gross wages and salaries*

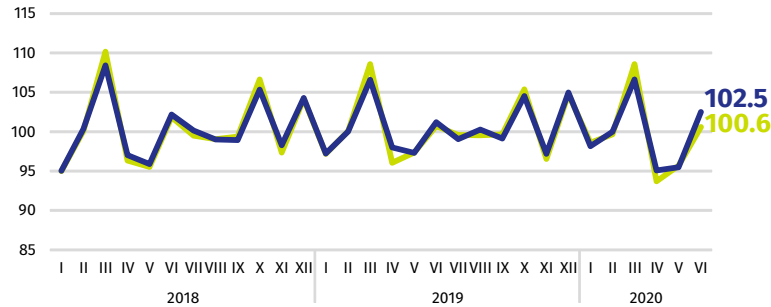
Mazowieckie Voivodship

PLN 6236

Warsaw capital city

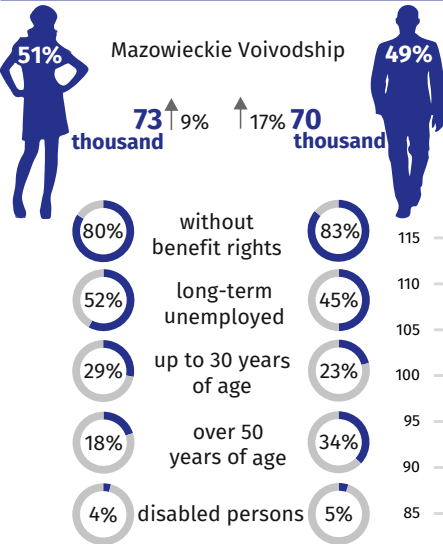
PLN 6506

previous month=100



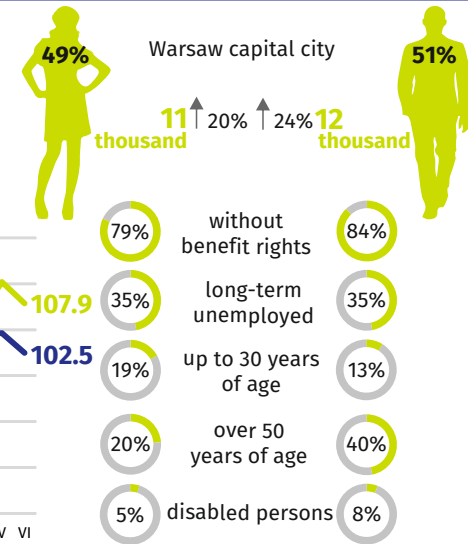
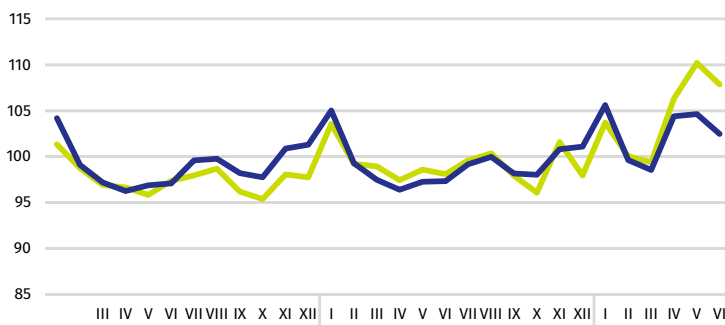
* In enterprises employing more than 9 persons.

REGISTERED UNEMPLOYMENT



Dynamics of unemployed persons registered at the end of month

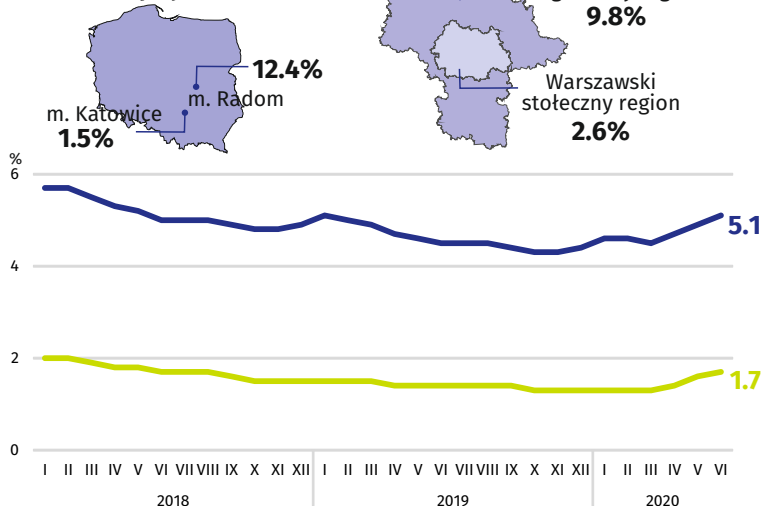
previous month=100



↑ increase compared to June 2019

REGISTERED UNEMPLOYMENT RATE

Cities with powiat status with the lowest/highest unemployment rate



Powiats with the lowest unemployment rate

m.st. Warszawa – **1.7%** ↑ 0.3 pp
warszawski zachodni – **2.2%** ↑ 0.5 pp
grójecki – **2.7%** ↑ 0.8 pp

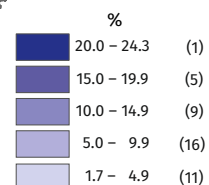
Powiats with the highest unemployment rate

szydłowiecki – **24.3%** ↑ 1.9 pp
radomski – **18.2%** ↑ 1.8 pp
przysuski – **17.5%** ↓ 0.2 pp

Powiats with the highest drops in unemployment rate

szydłowiecki ↑ 1.9 pp
radomski ↑ 1.8 pp
wyszowski, zwolenński ↑ 1.7 pp

↑ ↓ increase/decrease compared to June 2019



Number of powiats in the brackets.

Rate the study

When publishing Statistical Office data – please indicate the source.