

# Labour market in March 2020

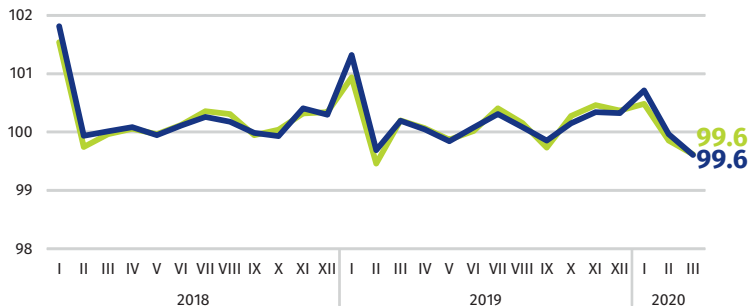
Data on Mazowieckie Voivodship and Warsaw capital city

## EMPLOYMENT AND WAGES AND SALARIES IN THE ENTERPRISE SECTOR

Average employment\*

Mazowieckie Voivodship **1545 thousand**  
Warsaw capital city **1094 thousand**

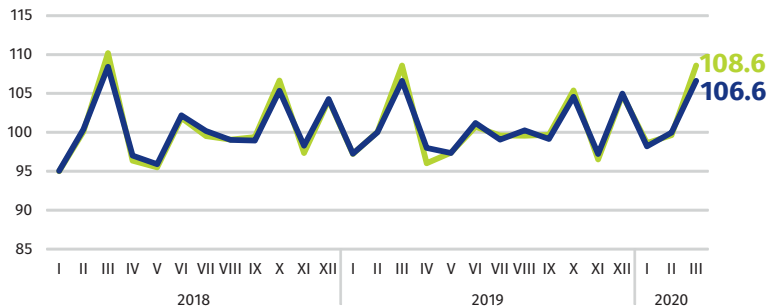
previous month=100



Average monthly gross wages and salaries\*

Mazowieckie Voivodship **PLN 6701**  
Warsaw capital city **PLN 7216**

previous month=100

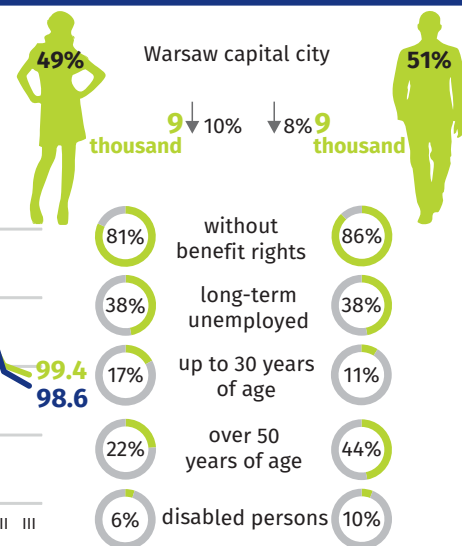
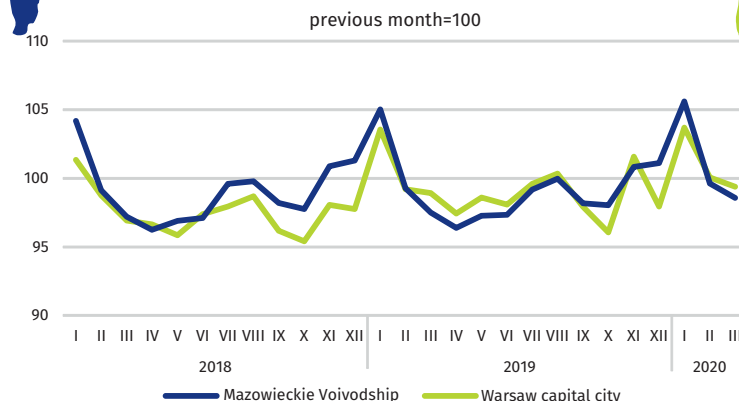
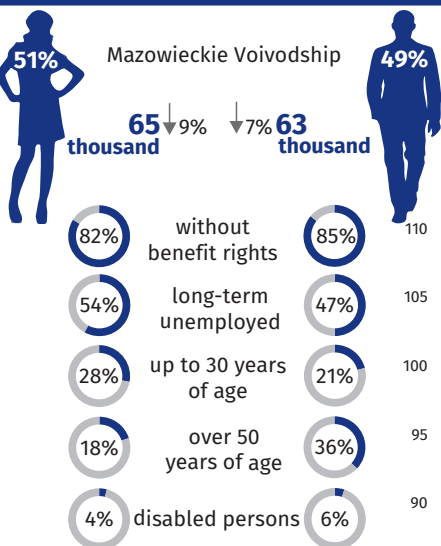


\* In enterprises employing more than 9 persons.

## REGISTERED UNEMPLOYMENT

Dynamics of unemployed persons registered at the end of month

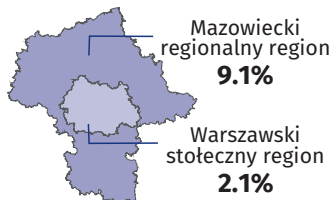
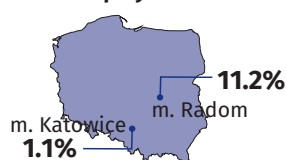
previous month=100



↓ decrease compared to March 2019

## REGISTERED UNEMPLOYMENT RATE

Cities with powiat status with the lowest/highest unemployment rate



Powiats with the lowest unemployment rate

m.st. Warszawa – **1.3%** ↓0.2 pp  
warszawski zachodni – **1.8%** ↓0.2 pp  
grójecki – **2.3%** ↑0.1 pp

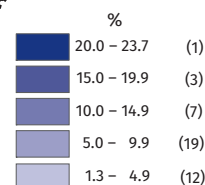
Powiats with the highest unemployment rate

szydłowiecki – **23.7%** ↓0.6 pp  
przysuski – **17.5%** ↓0.5 pp  
radomski – **16.8%** ↓0.4 pp

Powiats with the highest drops in unemployment rate

gostyniński ↓1.8 pp  
sierpecki ↓1.7 pp  
płocki ↓1.6 pp

↑↓ decrease/increase compared to March 2019



Number of powiaty in the brackets.