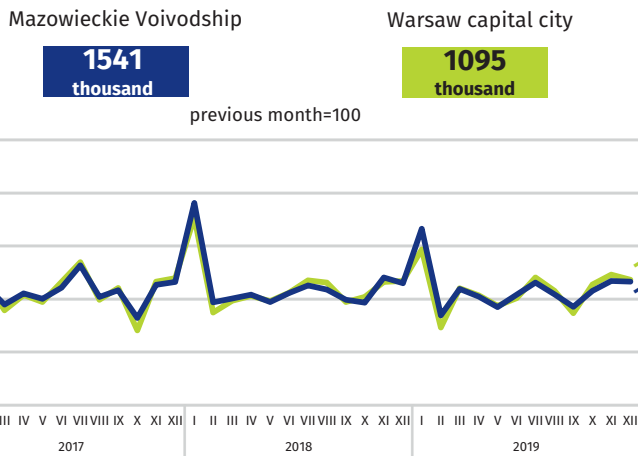


Labour market in December 2019

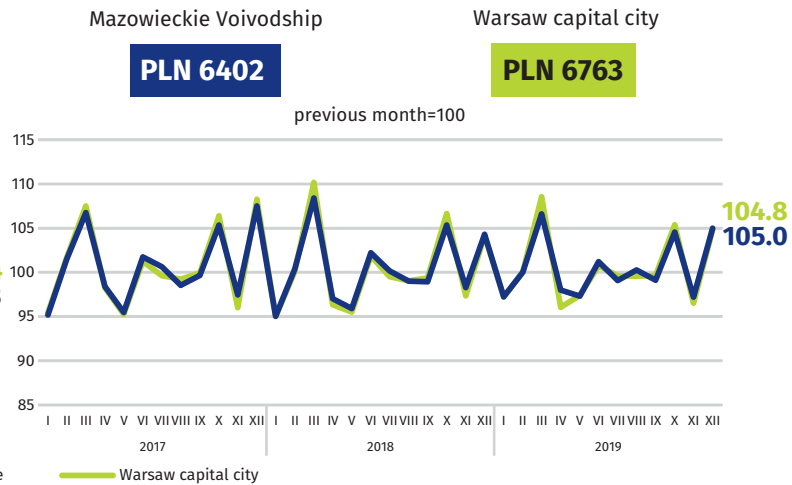
Data on Mazowieckie Voivodship and Warsaw capital city

EMPLOYMENT AND WAGES AND SALARIES IN ENTERPRISE SECTOR

Average employment*

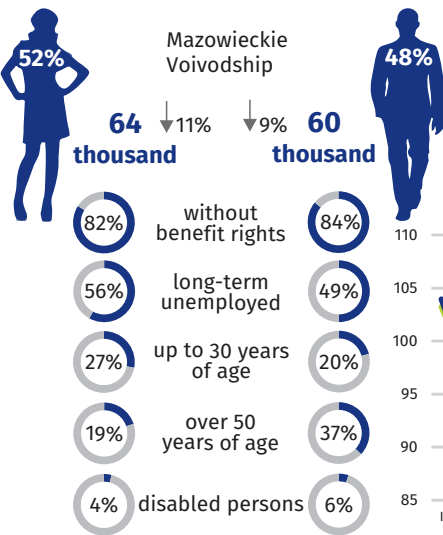


Average monthly gross wages and salaries*

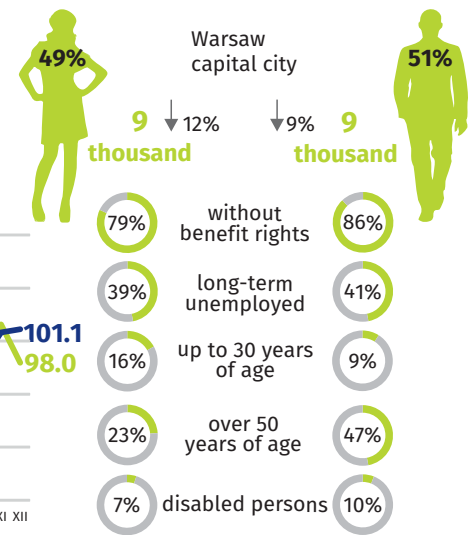
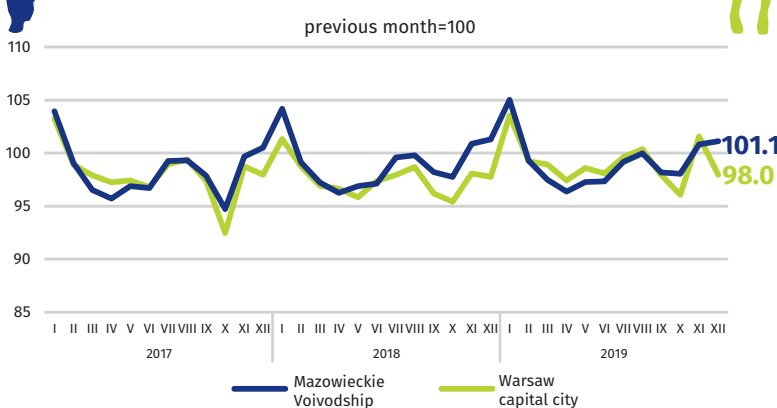


* In enterprises employing more than 9 persons.

REGISTERED UNEMPLOYMENT

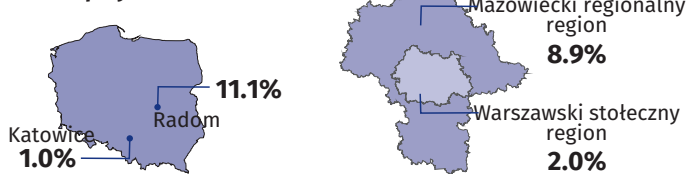


Dynamics of unemployed persons registered at the end of month



REGISTERED UNEMPLOYMENT RATE

Cities with powiat status with lowest/highest unemployment rate



Powiats with the lowest unemployment rate

m.st. Warszawa – 1.3% ↓ 0.2 pp
warszawski zachodni – 1.6% ↓ 0.4 pp
grójecki – 2.0% ↓ 0.1 pp

Powiats with the highest unemployment rate

szydłowiecki – 23.0% ↓ 1.3 pp
przysuski – 17.7% ↓ 0.7 pp
radomski – 16.4% ↓ 1.0 pp

Powiats with the highest drops in unemployment rate

gostyniński ↓ 2.6 pp
sierpecki ↓ 1.6 pp
łośicki, płocki ↓ 1.4 pp

↓ decrease compared to December 2018

