

Labour market in April in 2019

Data for Mazowieckie Voivodship and Warszawa capital city

EMPLOYMENT AND WAGES AND SALARIES IN THE ENTERPRISE SECTOR

Average monthly employment*

Mazowieckie Voivodship

1526
thousand

Warszawa capital city

1081
thousand

previous month=100

Average monthly gross wages and salaries*

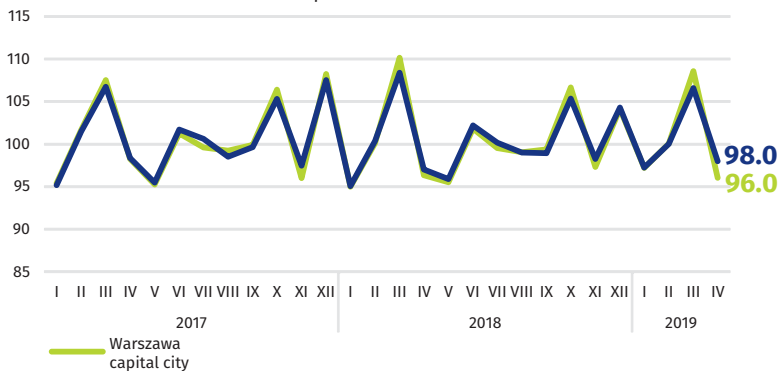
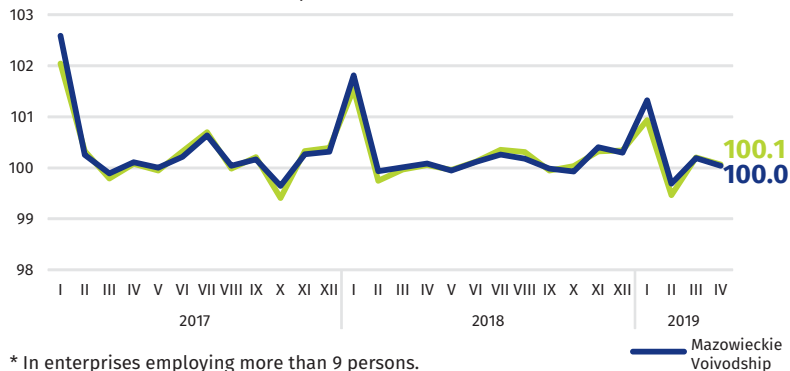
Mazowieckie Voivodship

PLN 6186

Warszawa capital city

PLN 6545

previous month=100

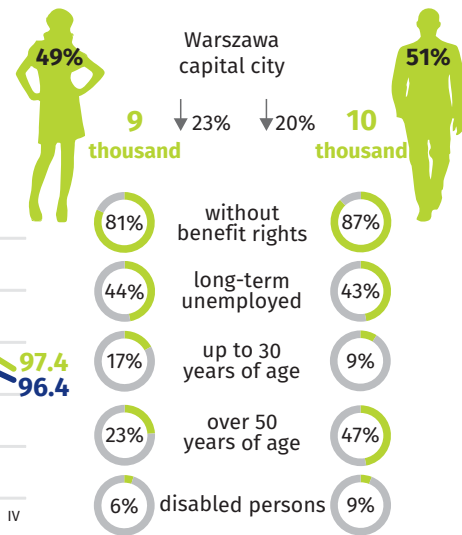
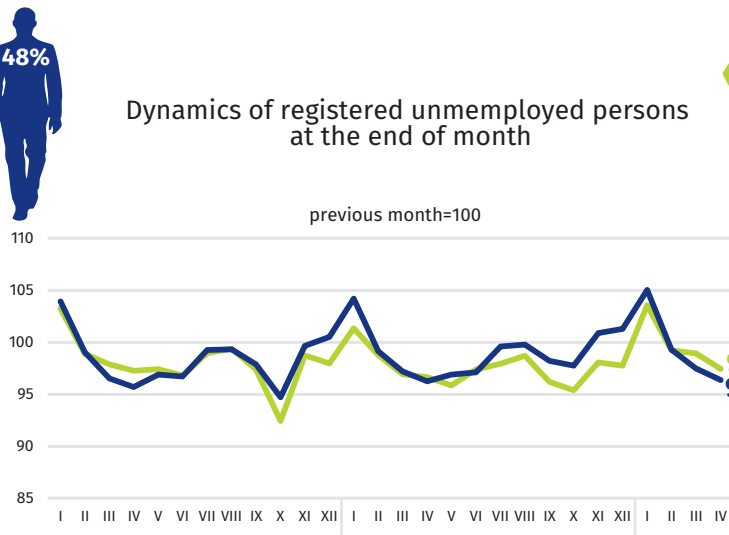
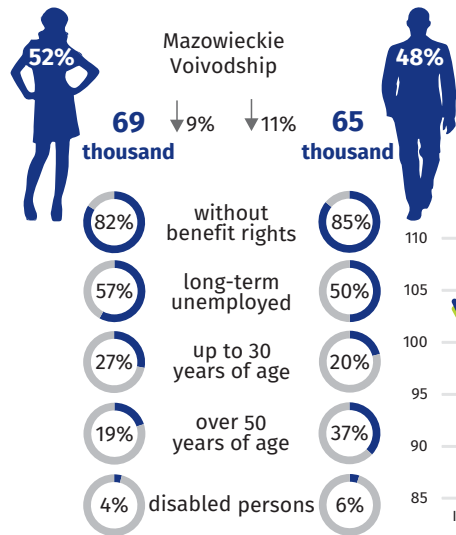


* In enterprises employing more than 9 persons.

REGISTERED UNEMPLOYMENT

Dynamics of registered unemplyed persons at the end of month

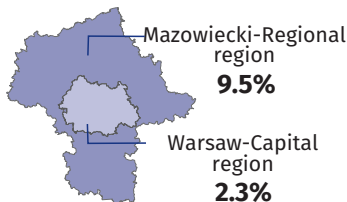
previous month=100



↓ decrease compared to April 2018

REGISTERED UNEMPLOYMENT RATE

Cities with powiat status with the lowest and highest unemployment rate



Powiats with the lowest unemployment rate

Warszawa capital city – 1.4% ↓ 0.4 pp
warszawski zachodni – 1.9% ↓ 0.2 pp
grójecki – 2.1% ↓ 0.3 pp

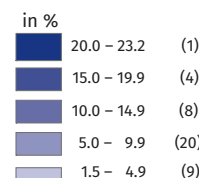
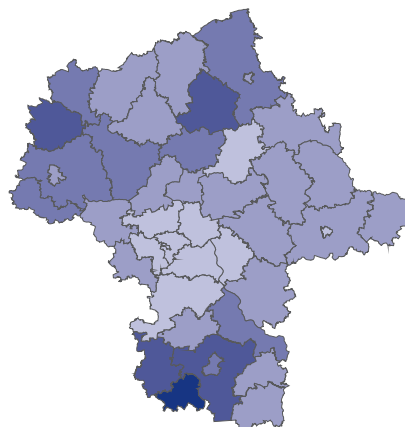
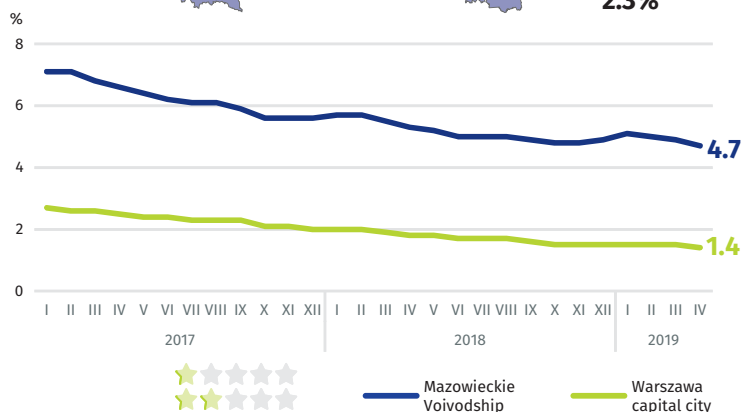
Powiats with the highest unemployment rate

sztytowiecki – 23.2% ↓ 1.5 pp
przysuski – 17.7% ↓ 1.1 pp
radomski – 17.1% ↓ 1.0 pp

Powiats with the highest drops in unemployment rate

gostyniński, makowski, ↓ 1.6 pp
zwoleniński
sztytowiecki ↓ 1.5 pp
sierpecki ↓ 1.4 pp

↓ decrease compared to April 2018



Number of powiats in the brackets.