

# 21 November World Day of Remembrance for Road Traffic Victims

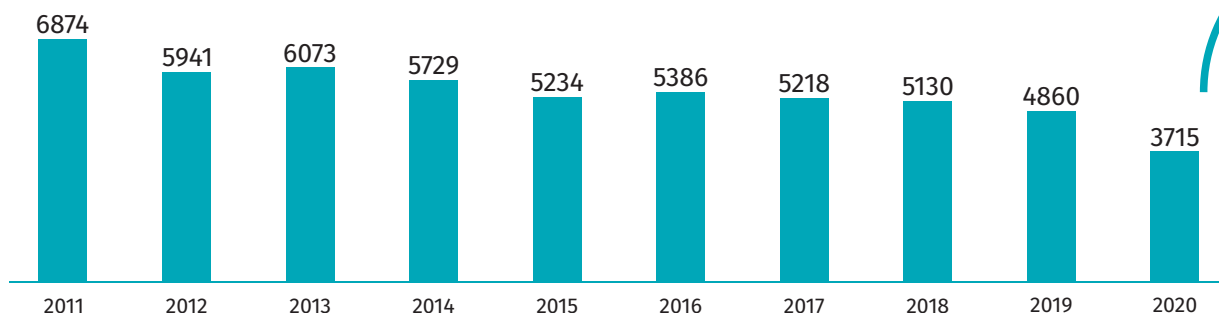
Data on Mazowieckie Voivodship

Statistical Office  
in Warszawa

warszawa.stat.gov.pl/en/

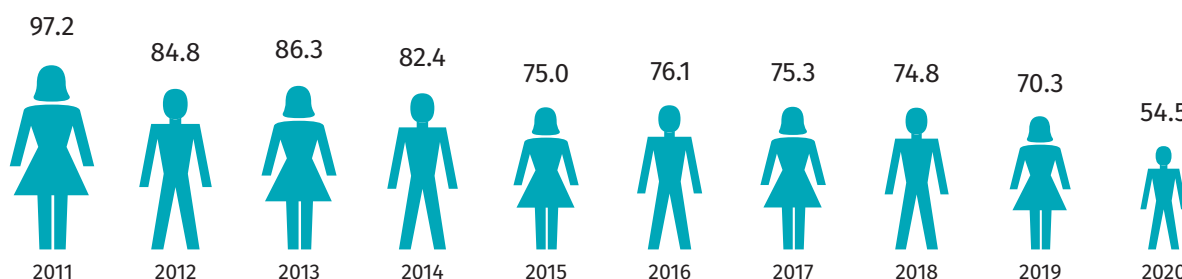
@Warszawa\_STAT

## NUMBER OF ROAD TRAFFIC VICTIMS



In 2020, the number of road traffic victims compared to 2011 decreased by **46.0%**

## ROAD TRAFFIC ACCIDENTS PER 100 THOUSAND POPULATION



In 2020, the number of road traffic accidents compared to 2011 decreased by **42.3%**

## Road accidents and their victims in 2020



**2960** ↓ 22.1%  
accidents



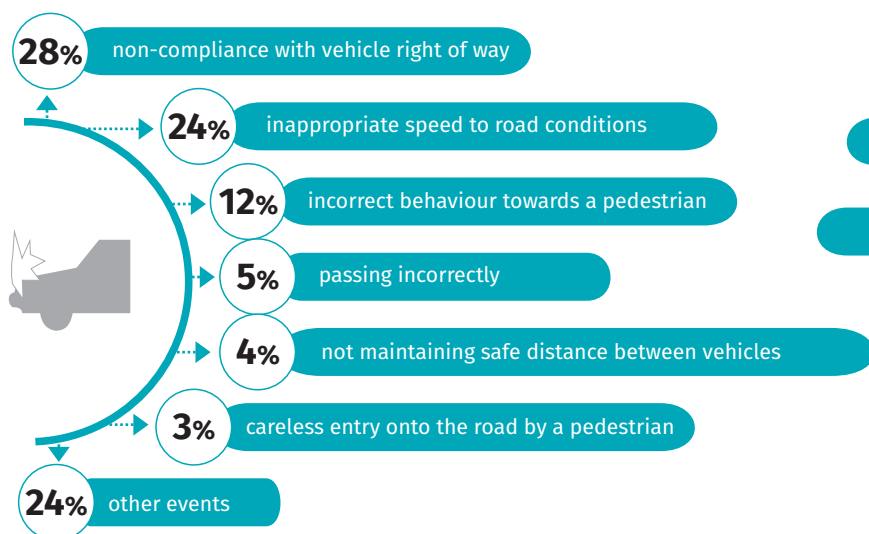
**420** ↓ 10.4%  
fatalities



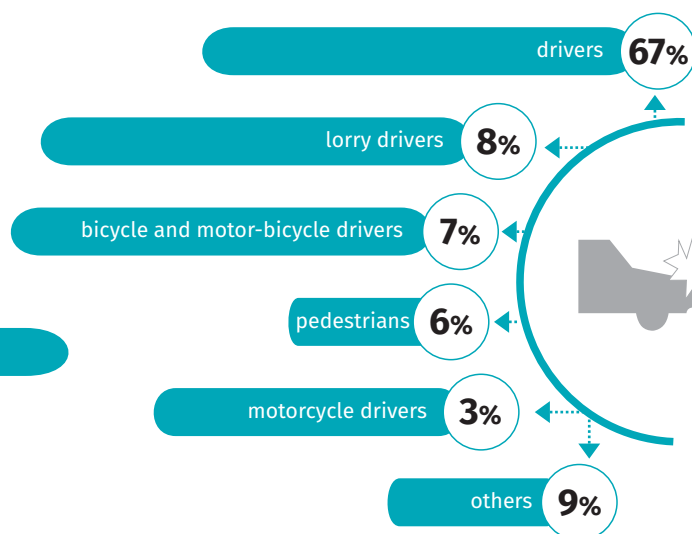
**3295** ↓ 25.0%  
injured persons

↓ decrease compared to 2019

### Accidents by causes



### Accidents by perpetrators



**Road accident** - event connected with the movement of vehicles on public roads as a result of which death or injury occurred.

**Fatality of road accident** is a person who died as a result of injuries at the scene of accident or within 30 days.

**Road traffic injury** is a person who incurred injuries and received medical attention.

Source: data of the National Police Headquarters.

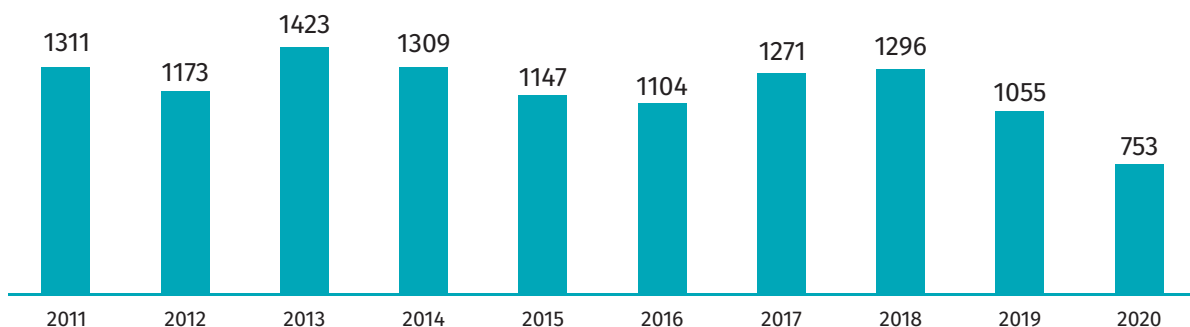
Rate  
the study

When publishing Statistical Office data - please indicate the source.

# 21 November World Day of Remembrance for Road Traffic Victims

Data on m.st. Warszawa

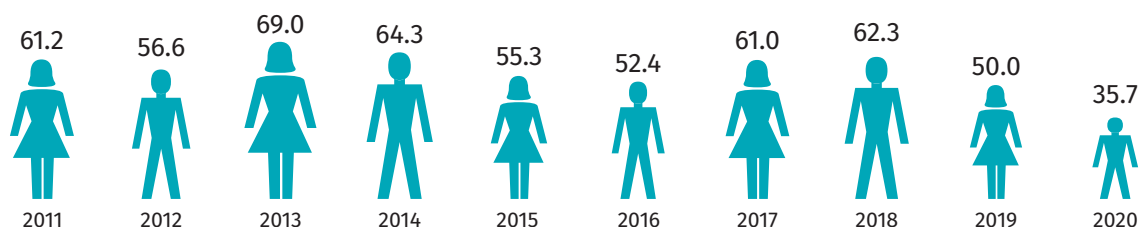
## NUMBER OF ROAD TRAFFIC VICTIMS



In 2020, the number of road traffic victims compared to 2011 decreased

by **42.6%**

## ROAD TRAFFIC ACCIDENTS PER 100 THOUSAND POPULATION



In 2020, the number of road traffic accidents compared to 2011 decreased

by **38.5%**

## Road accidents and their victims in 2020



**641** accidents ↓ 28.1%



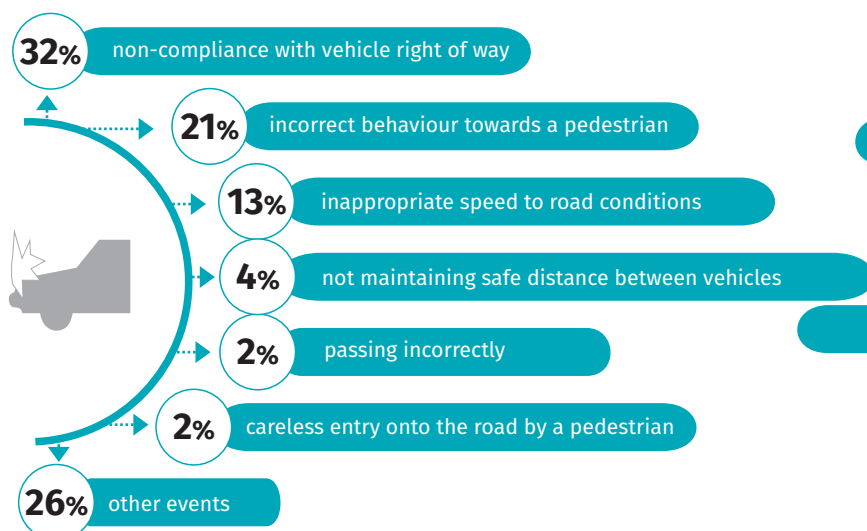
**44** fatalities ↑ 25.7%



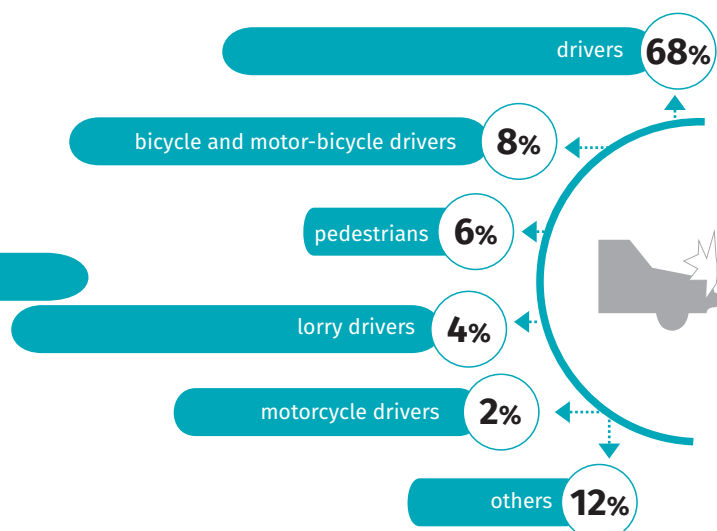
**709** injured persons ↓ 30.5%

↑ ↓ increase/decrease compared to 2019

### Accidents by causes



### Accidents by perpetrators



**Road accident** - event connected with the movement of vehicles on public roads as a result of which death or injury occurred.

**Fatality of road accident** is a person who died as a result of injuries at the scene of accident or within 30 days.

**Road traffic injury** is a person who incurred injuries and received medical attention.

Source: data of the National Police Headquarters.

Rate  
the study

When publishing Statistical Office data - please indicate the source.