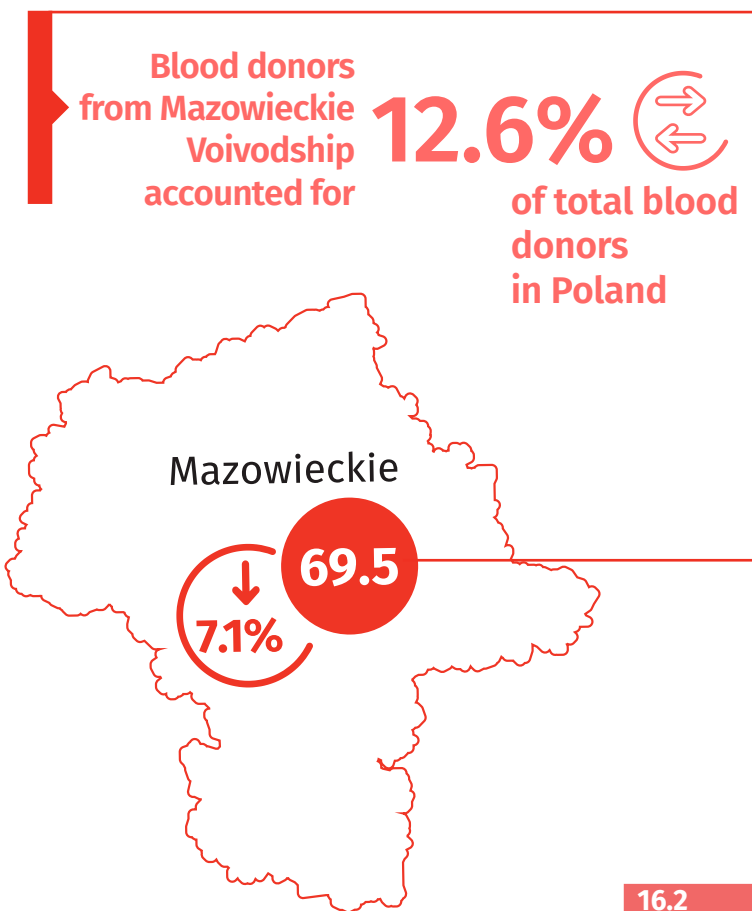




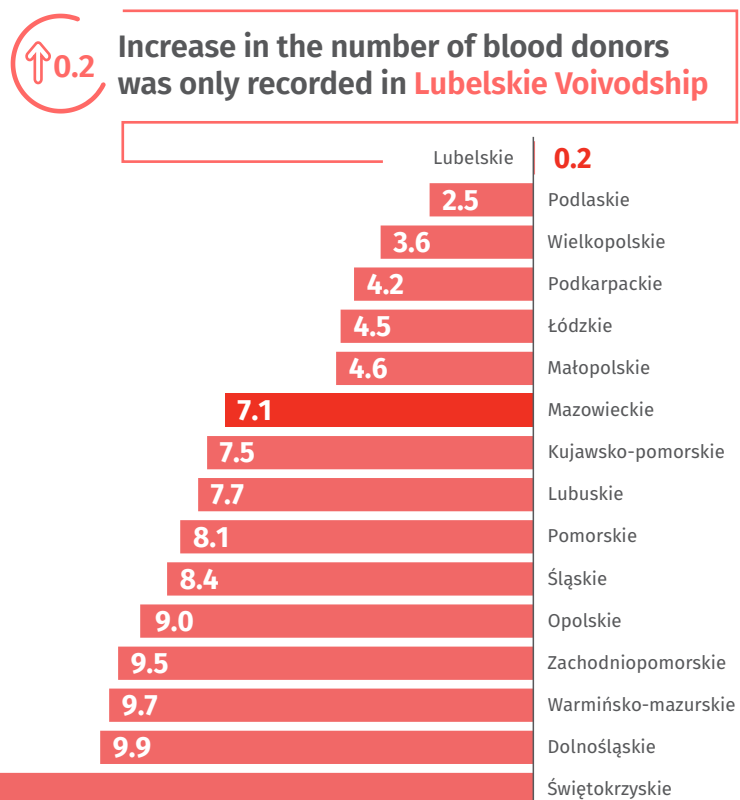
14 June - World Blood Donor Day

Data on Mazowieckie Voivodship for 2020

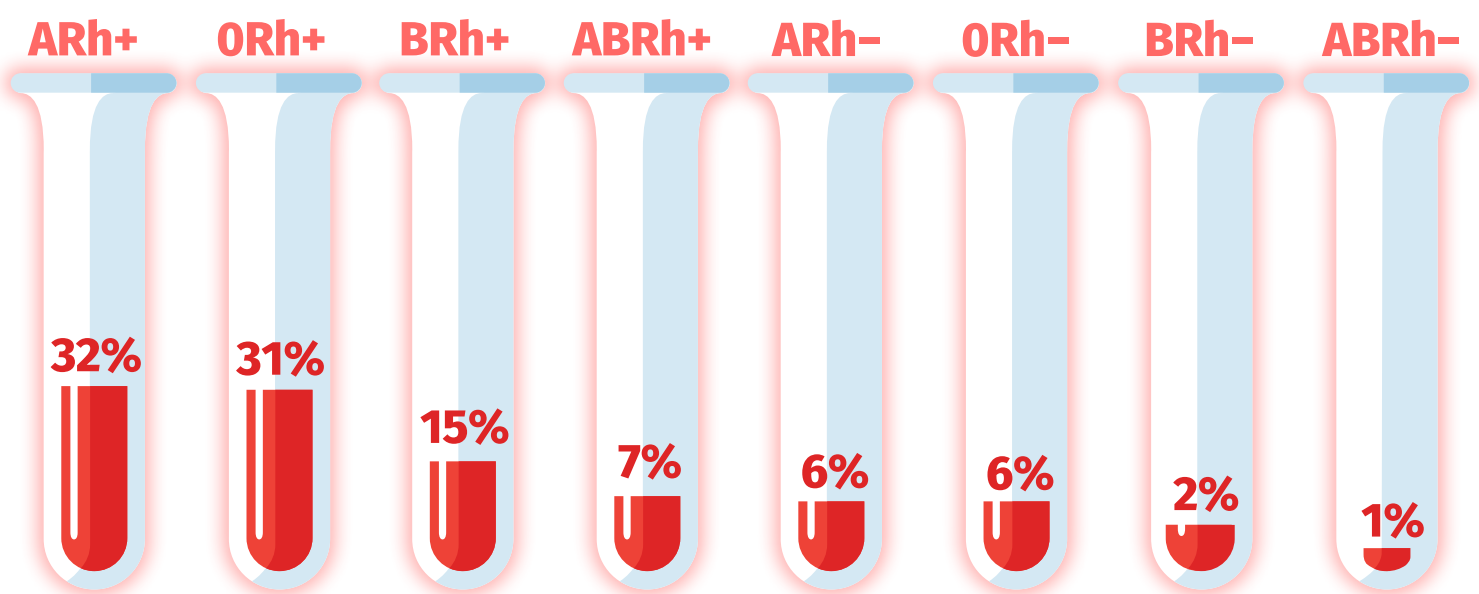
BLOOD DONORS BY VOIVODSHIPS in thousands in 2020



Decrease in percentage number of blood donors compared to the previous year



PERCENTAGE SHARE OF BLOOD GROUPS IN POLAND



Source: www.rckk.rzeszow.pl/krew/rozklad-procentowy-grup-krwi-w-polsce

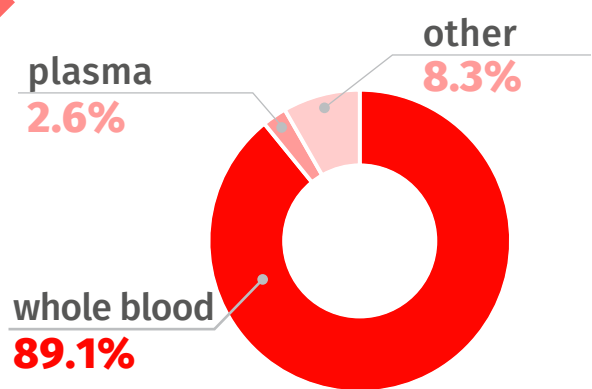
BLOOD DONORS, TOTAL
69.5 thousand
 ↓ 7.1%

WHOLE BLOOD DONATIONS
126.2 thousand
 ↓ 9.8%

MULTIPLE DONORS
52.4 thousand
 ↓ 3.2%

WHOLE BLOOD DONATIONS
103.4 thousand
 ↓ 7.0%

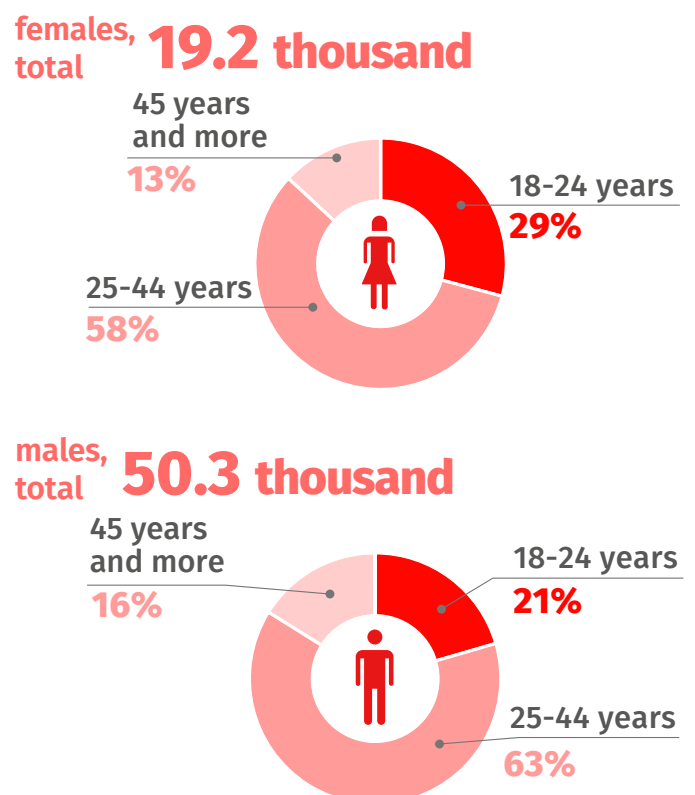
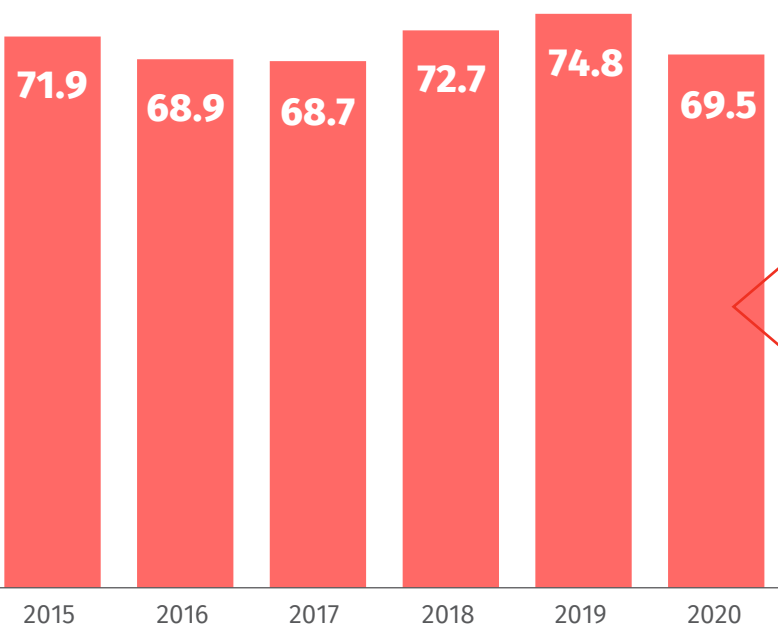
DONATIONS total
141.6 thousand



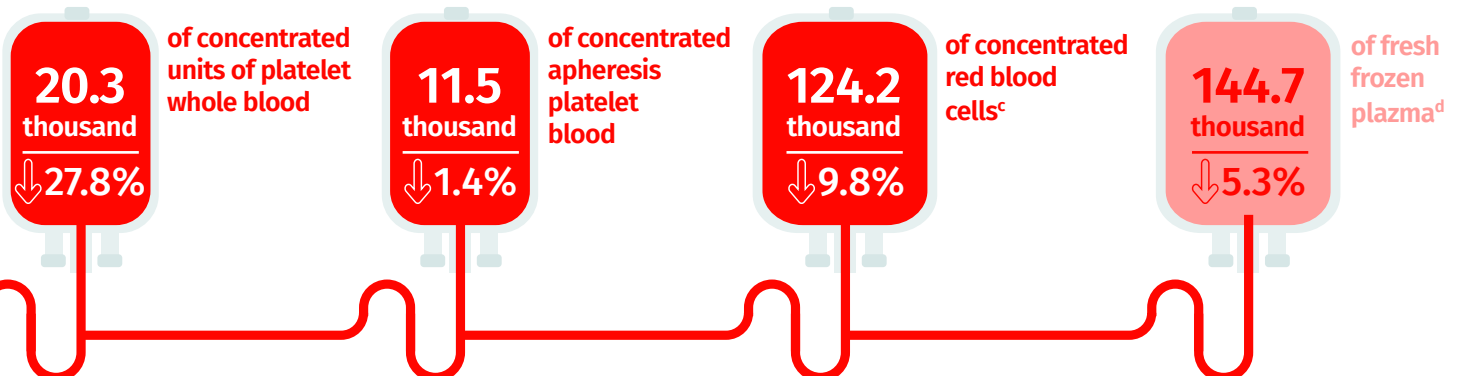
Donation - the collection of blood or its component for clinical, diagnostic or production purposes

BLOOD DONORS in thousands^b

by sex and age groups in 2020



NUMBER OF UNITS PRODUCED



↑ ↓ ↔ Increase, decrease, no changes compared to 2019

a Excluding data of the Ministry of National Defence and Ministry of Internal Affairs and Administration. b Data concern blood donors who donated blood or its components. c One unit of red cell concentrate equals approximately 250 ml, one liter of red blood cell concentrate equals approximately 4 units. d One unit of fresh-frozen plasma equals 200 ml, one liter of plasma equals 5 units.

Source: Data from the National Blood Centre