



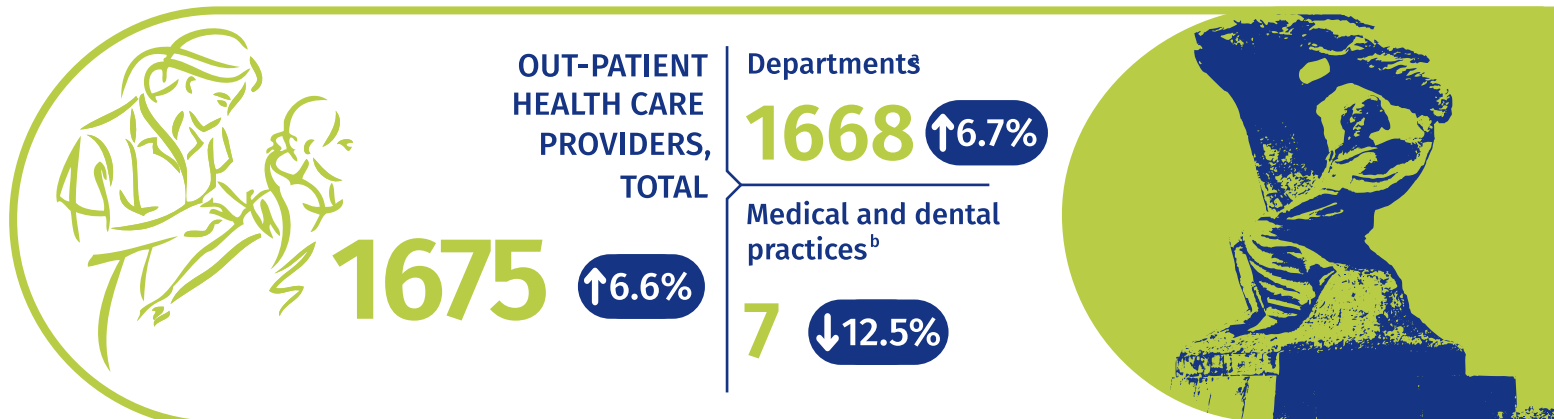
Out-patient health care in 2023

Data on m.st. Warszawa

Statistical Office
in Warszawa

warszawa.stat.gov.pl/en/

@Warszawa_STAT



ADAPTING THE UNIT TO THE NEEDS OF PEOPLE WITH DISABILITIES

in out-patient departments and medical practices

ramps/platforms to facilitate entering the building

917



automatically opened entrance door to the building

223



elevators

583



facilities for the visually impaired and the blind

101



non-slip floors

584



no facilities

137



OUT-PATIENT CONSULTATIONS PROVIDERS^c

27359.3 thousand

↑5.7%



IN PRIMARY HEALTH CARE

6,349.4 thousand

↑1.3%



WITHIN NIGHTTIME AND HOLIDAY HEALTH CARE^d

206.5 thousand

↓8.7%



IN SPECIALISED HEALTH CARE

20,803.4 thousand

↑7.3%

Medical 17,731.7 thousand

↑7.0%

Dental 3071.7 thousand

↑8.8%

Consultations provided per inhabitant

15 consultations

Consultations via telephone accounted for

17.3%

of total consultations provided in out-patient health care

Out-patient consultations provided:



in primary health care

59.5% (35.5%) (22.6%) (16.8%)



withing nighttime and holiday health care

58.0% (23.6%) (27.0%) (6.2%)



in specialised medical and dental health care

61.1% (20.7%) (16.4%) (17.6%)



to women

to children and youth under 18

to persons aged 65 and more

via telephone

↑ ↓ Increase/decrease compared to the previous year.

Including departments of the Ministry of National Defence and the Ministry of Interior and Administration. ^b The data includes practices that have signed contracts with the National Health Fund or with departments. ^c Consultation via telephone is medical or psychological consultation provided remotely using a telephone connection or other ICT systems. ^d Including patient funded counseling (non-state funding); without consultations from the admission rooms of general hospitals. ^e Nighttime and holiday health care are services in the field of primary health care provided from Monday to Friday from 6.00 p.m. to 8.00 a.m. the following day and 24 hours a day on public holidays, including basic emergency or continuing treatment.

Rate
the study

When publishing Statistical Office data, please indicate the source.