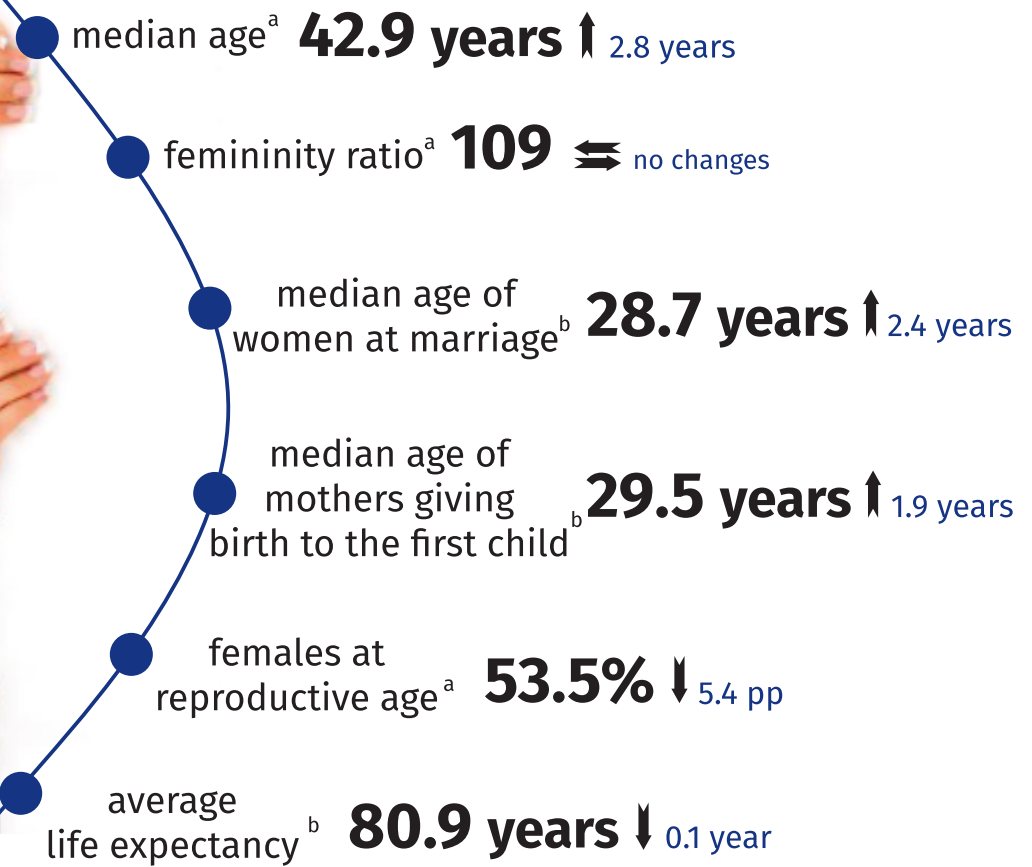
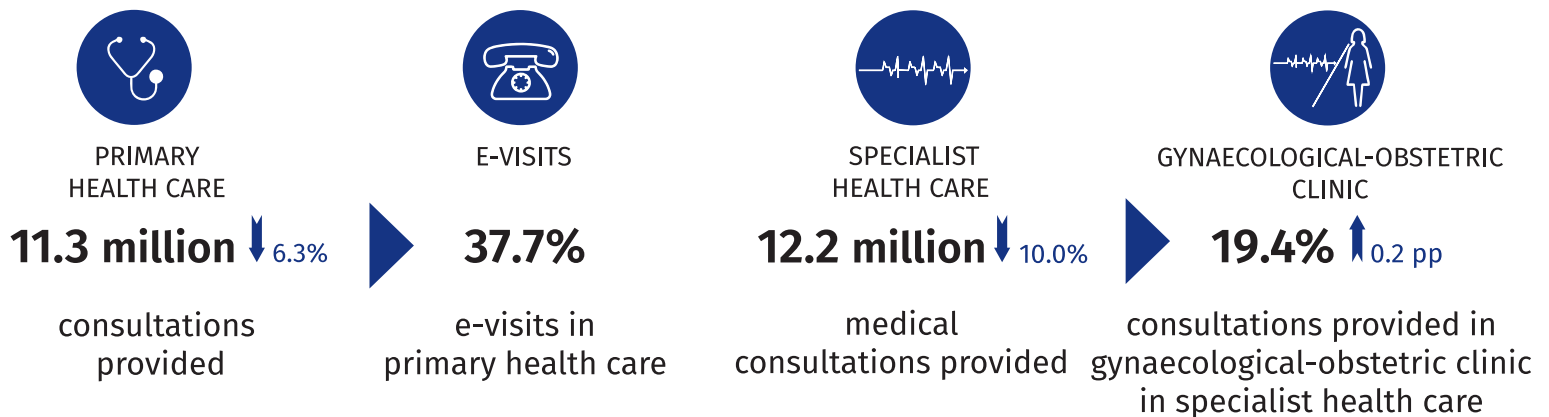




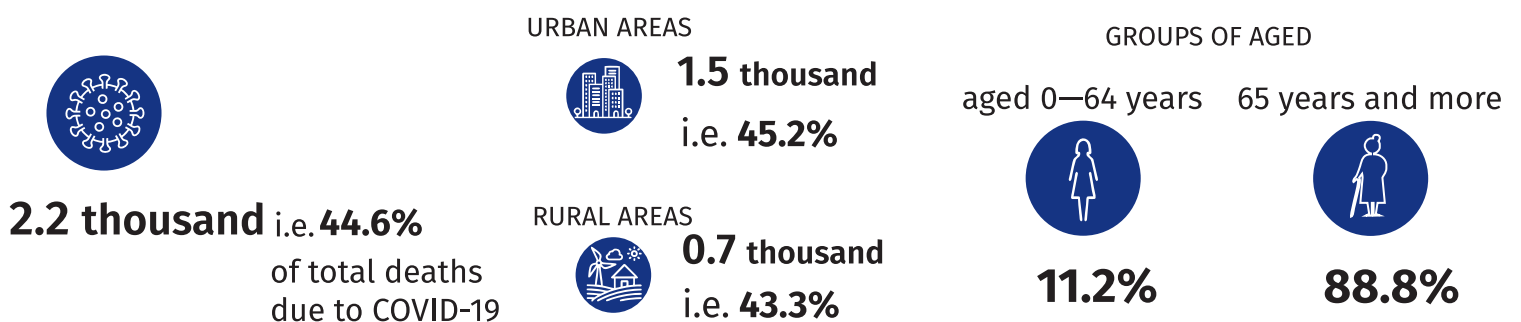
WOMEN 2827.4 thousand ^a ↓ 0.1% 52.2% ^a ↑ 0.1 pp



HEALTH CARE OF WOMEN ^b

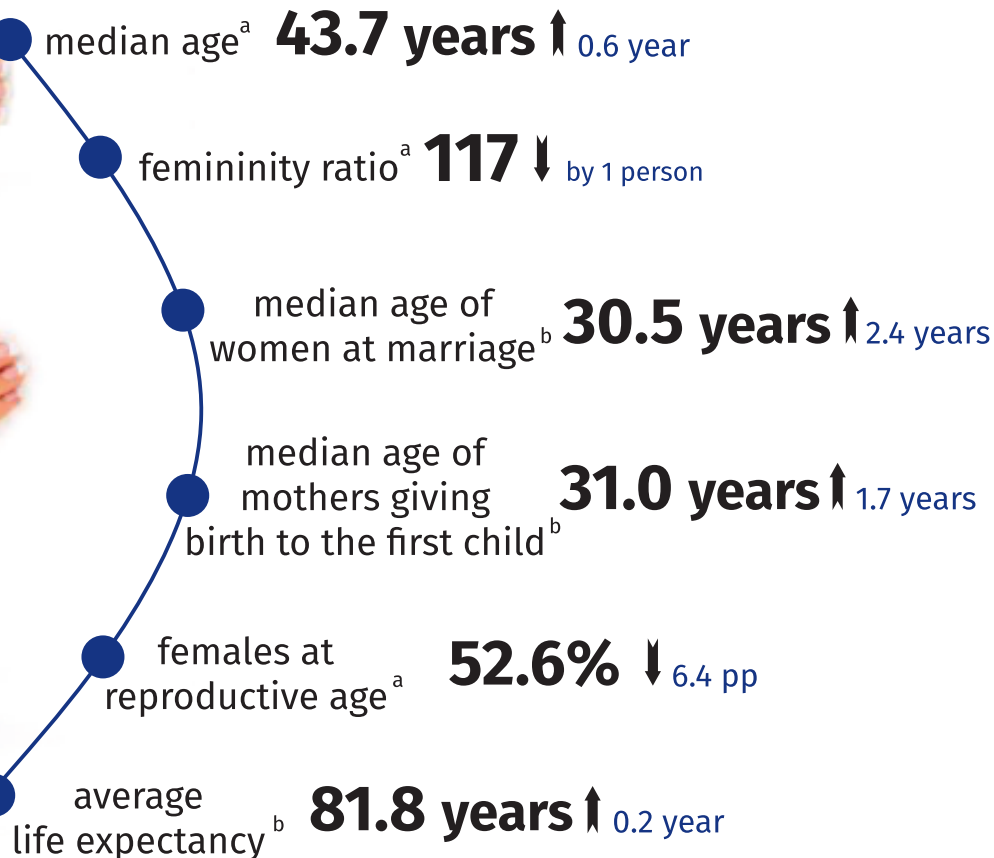


DEATH OF WOMEN DUE TO COVID-19 ^b

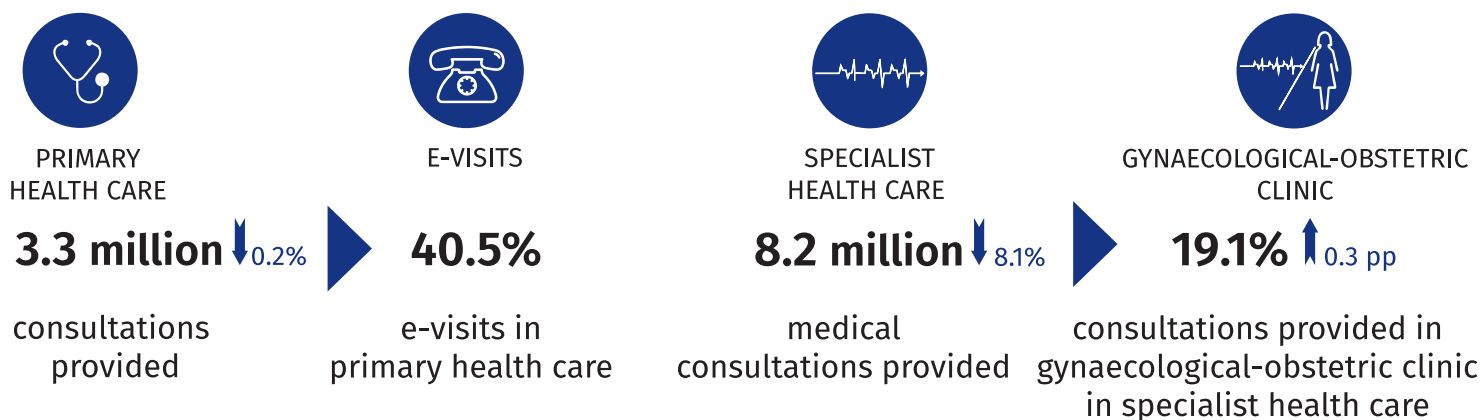




WOMEN 966.7 thousand ↓ 0.1% 53.9% ⇌ no changes



HEALTH CARE OF WOMEN^b



DEATH OF WOMEN DUE TO COVID-19^b

