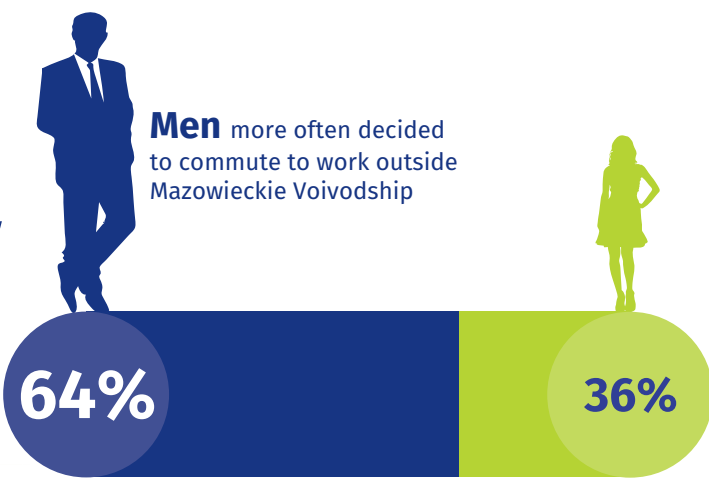
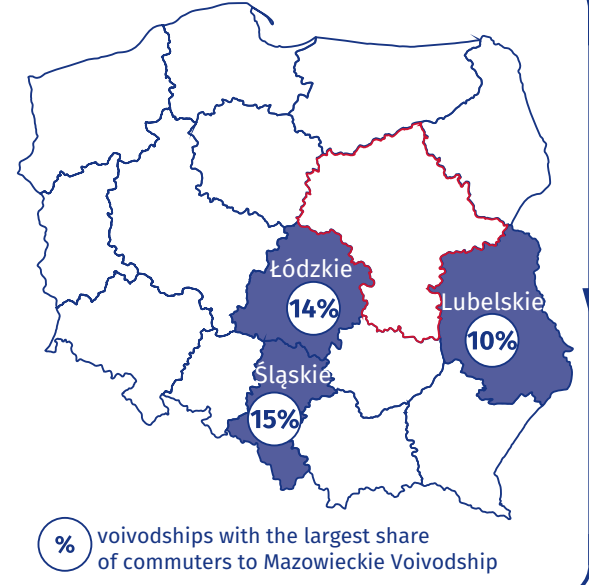
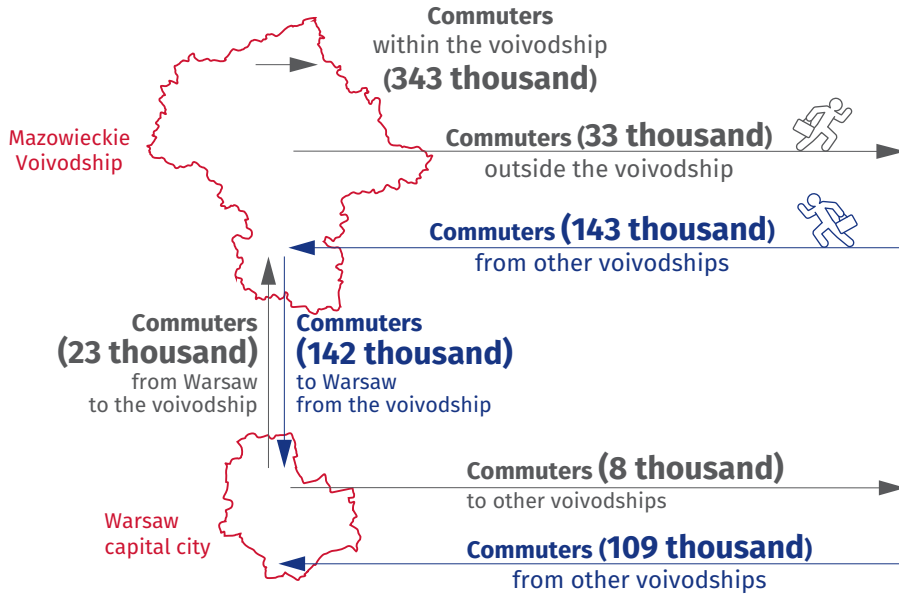


Commuters on increase

Data on Mazowieckie Voivodship and Warsaw capital city



- The number of commuters to work increased by **5%** in the voivodship and by **16%** in Warsaw (compared to 2011)
- The most numerous group of commuters to Warsaw were the inhabitants of Pruszków **5 thousand**
- Do you know that...?**
- In Warsaw, the number of arrivals for work exceeded **8-times** the number of departures

