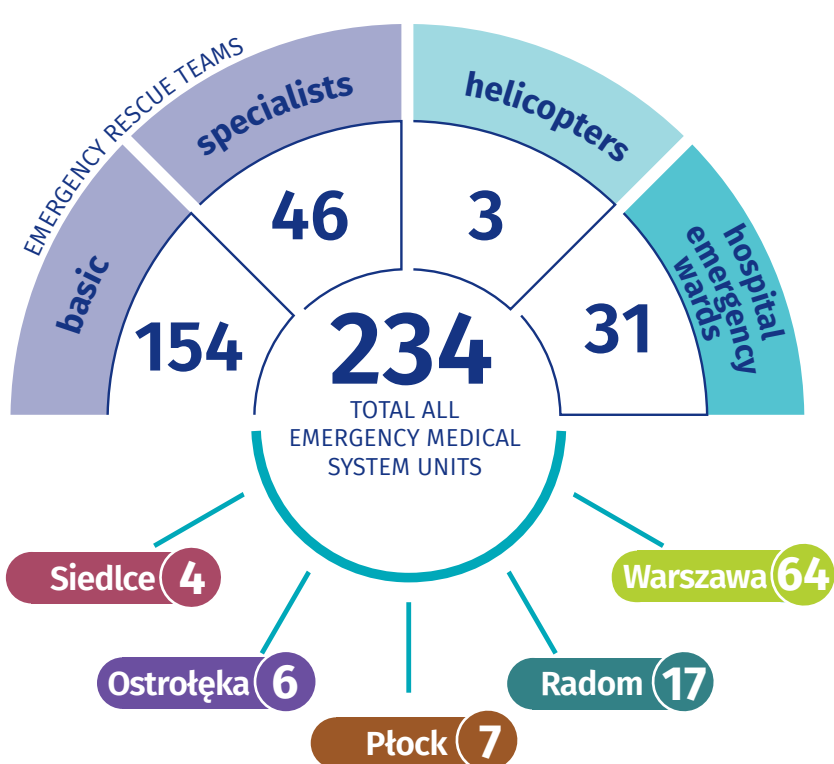
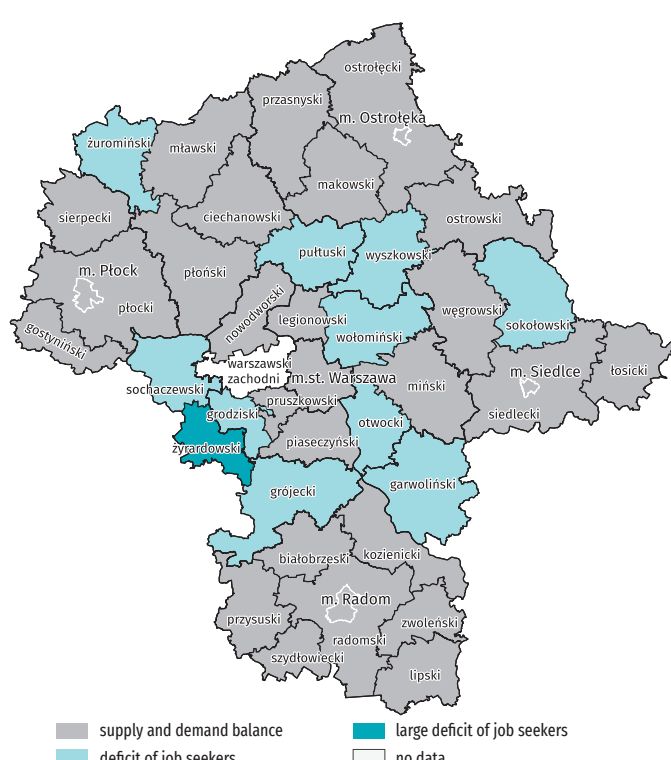




## Emergency medical system units



## Paramedics on the labour market - the ratio between available employees and the needs of employers<sup>a</sup>



## Paramedics

**1647**



Siedlce	24
Płock	46
Ostrołęka	60
Radom	122
Warszawa	356

## Composition of selected medical rescue entities



Doctors

**303**

Siedlce	5
Ostrołęka	9
Płock	13
Radom	20
Warszawa	46

## Nurses

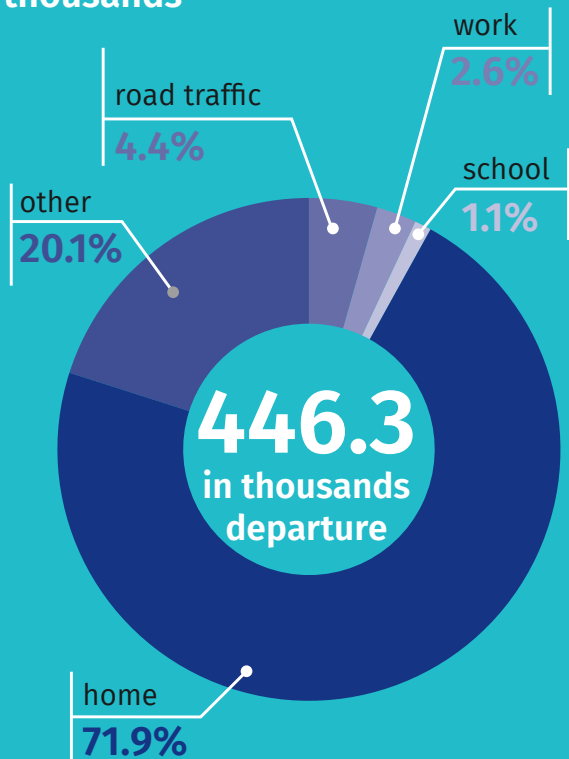


**182**

Płock	0
Ostrołęka	6
Siedlce	6
Radom	31
Warszawa	42

## Medical rescue operations

### Calls to the occurrence places<sup>b</sup> in thousands



### Persons with confirmed death before or during rescue operations in thousands

females **216.9**

persons aged 65 and more **202.8**

children and youth under 18 **26.8**

Number of persons who received health care services in the place of occurrence in thousands

**8.8**

**448.8**

## including health services provided in thousands in terms of:

### Out-patient health services provided in admission room or in a hospital emergency ward

### Total number of consultations

**765.9**

**286.7**  
surgery<sup>c</sup>

**178.5**

in the general scope not classified as listed

**118.7**  
internal diseases

**63.2**  
paediatrics

**34.7**

cardiology ophthalmology

**32.7**

**26.5**

neurology

**23.3**

gynaecology and obstetrics

**1.5**

psychiatry

**0.2**

dentistry



a Projection for 2020.  
b Excluding calls to diseases.  
c Including orthopedic and trauma surgery and neurosurgery.