

21 and 22 January Grandma's and Grandpa's Day

Data on Mazowieckie Voivodship



1 349 621 ↑ 0.1%

– population aged 60 and more^a



58.9%



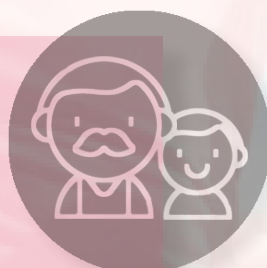
41.1%

24.5% ↔ of total population

113 ↑ 3 persons

Ageing index^a:

Number of persons aged 65 and more
per 100 persons aged 0-14



Parent support ratio^a:

Number of persons aged 85 and more
per 100 persons aged 50-64

13 ↔



Primary health care
of persons aged 65 and more^b ↑ 5.1%

7 463.9 thousand
of consultations provided



Specialised care of persons
aged 65 and more^b ↑ 14.1%

5 765.7 thousand
of consultations provided



31.8% ↓ 6.3 pp

of consultations provided **via telephone**



9.5 thousand ↑ 37.8%

of consultations provided **in a geriatric clinic**



16.7% ↓ 0.2 pp

Library users aged 60 and more
registered in public libraries^b
in % of total number of library users

Cultural activity of persons aged 60 and more^b (in % of the total number of persons participating
in the activities of centres of culture, cultural centres and establishments, clubs and community centres)



35.0% ↓ 0.8 pp

Members of groups,
clubs and sections



21.0% ↑ 1.3 pp

Members of artistic groups



17.8% ↑ 2.8 pp

Course graduates

Rate
the study



● increase/decrease compared to the previous year
○ no changes compared to the previous year

^a Data on the first half of 2022
^b Data on 2021

When publishing Statistical Office data, please indicate the source.

