

Economic activity of population in Mazowieckie Voivodship in the second quarter of 2024¹

26 September 2024

↓ 12.9%

Decrease in the number of unemployed persons compared to the previous quarter

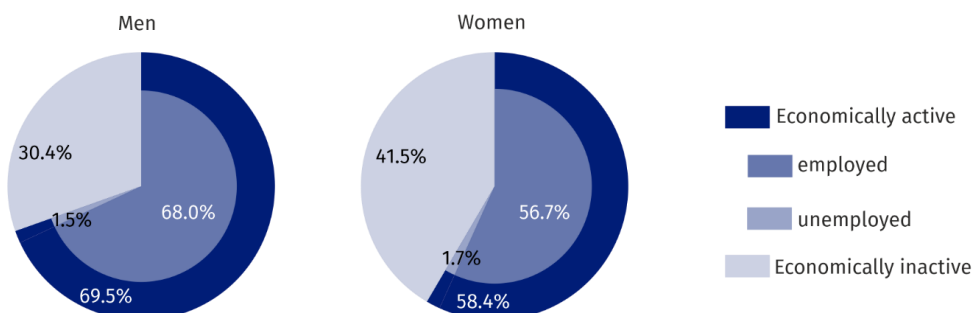
In Q2 2024, there was a decrease in the number of unemployed persons and an increase in employed persons compared to Q1 2024. Unemployed men looked for a job longer than women, and unemployed urban residents shorter than rural residents.

Economic activity of population aged 15–89 according to LFS

In the second quarter of 2024, among the total population of Mazowieckie Voivodship aged 15-89, 62.1% represented employed persons, 1.6% – unemployed, and 36.2% – economically inactive persons. This means that less than half of the population aged 15-89 (37.9%) did not work. In urban and rural areas this structure looked similar. However, significant differences were visible in the structure of men and women. Without employment (economically inactive and unemployed) were 31.9% of men and 43.2% of women.

Almost 38% of population aged 15-89 did not work

Chart 1. Structure of population aged 15-89 by sex in Q2 2024

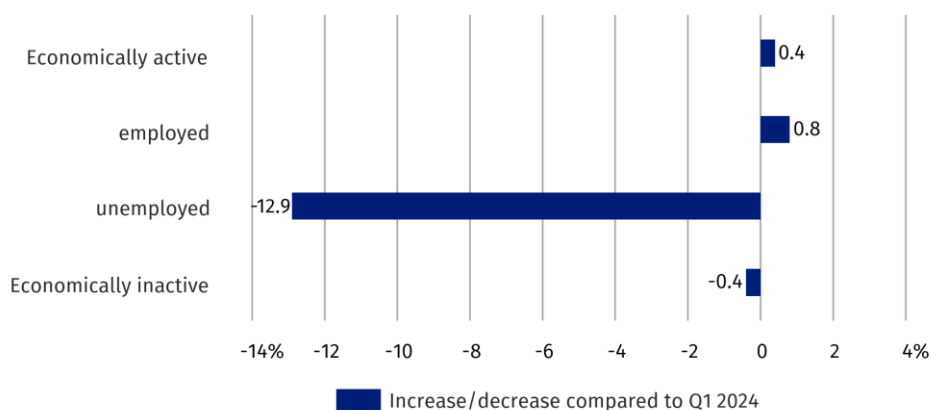


Compared to the first quarter of 2024, the number of employed persons increased by 0.8%. Whereas, the number of unemployed persons increased (by 12.9%), as well as the number of economically inactive persons (0.4%). An increase in the ratio of non-working population over working population was observed. In the second quarter of 2024, there were 610 unemployed and economically inactive persons per 1,000 employed persons (by 12 fewer than in the first quarter of 2024).

There were 610 unemployed and economically inactive persons per 1,000 employed persons

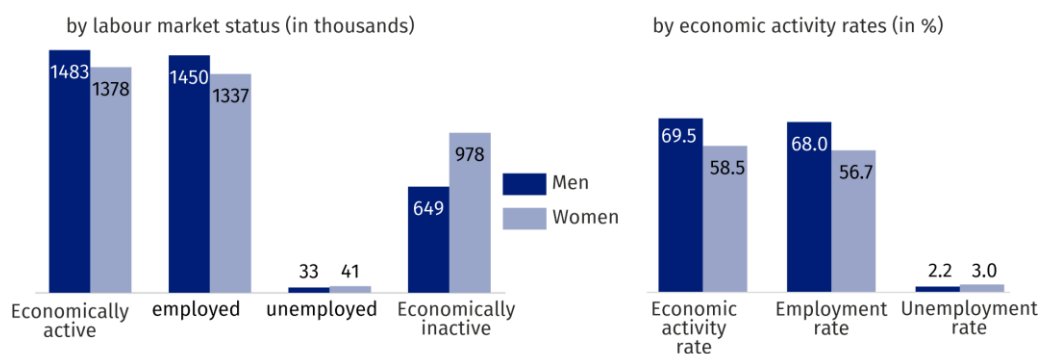
¹ Preliminary results of the Labour Force Survey.

Chart 2. Changes in the economic activity of population compared to Q1 2024



The economic activity rate was 63.8% and increased by 0.2 pp compared to the previous quarter. There was an increase in the level of economic activity both among men (by 0.6 pp) and a decrease among women (by 0.2%). This indicator increased in urban areas (by 0.6 pp) and decreased (by 0.5 pp) in rural areas.

Chart 3. Economic activity of population in Q2 2024



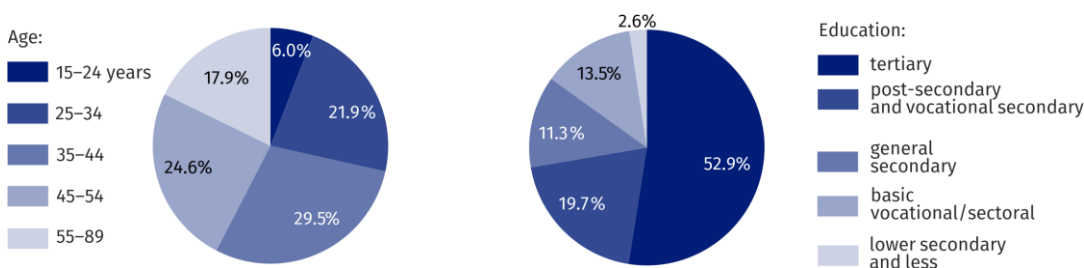
The highest value of the rate in terms of age was recorded for the age group 35–44, which amounted to 92.7%, while the lowest among persons aged 55–89 – 31.7%. For working age population, this rate was 85.4%.

Employed persons

In the second quarter of 2024, in Mazowieckie Voivodship, the population of employed persons counted 2788 thousand persons, and the employment rate was estimated at 62.1% and increased by 0.5 pp compared to the previous quarter.

Compared to the first quarter of 2024, the number of employed persons increased 0.8%. There was an increase among men (by 2.0%) and a decrease among women (by 0.4%). The number of employed persons increased in urban (by 1.3%) and decreased in rural areas (by 0.1%).

Chart 4. Structure of employed persons by age and education in Q2 2024



In the second quarter of 2024, the highest employment rate was recorded among persons aged 45–54 (90.9%), and the lowest among persons aged 55–89 (31.0%). The highest increase of the rate was recorded among persons aged 45–54 (by 1.4 pp), and the lowest increase among persons aged 35–44 (by 0.2 pp).

For working age population, the employment rate reached 83.1% (an increase compared to the first quarter of 2024 by 0.4 pp).

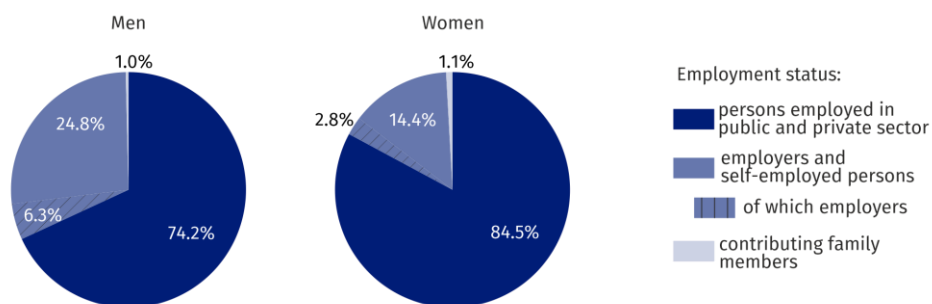
Among employed persons according to the level of education, the highest employment rate recorded persons with higher education – 82.9%, and the lowest persons with lower secondary and less education – 15.0%. The highest increase in the employment rate occurred among persons with higher education (by 2.0 pp), and the largest decrease among persons with general secondary education (by 4.5 pp).

In the second quarter of 2024, there were 2207 thousand persons employed in the public and private sector (i.e. 79.2% of total employees), and their number increased by 1.3% compared to the first quarter of 2023. There was an increase among contributing family workers (from 27 thousand to 29 thousand), and a decrease among employers and self-employed persons (from 559 thousand to 552 thousand).

The vast majority of employed persons supported the private sector (68.2% of the total). Of these, the majority (52.6%) were men. The situation was different among persons employed in the public sector, where among 702 thousand employed persons predominated women (59.4%). There were 85.5% of employees employed for an indefinite period (no changes compared to the first quarter of 2024).

More than 68% of total employed persons worked in the private sector

Chart 5. Structure of employed persons by employment status in Q2 2024



Nearly 25% of men and more than 14% of women worked as employers and self-employed persons

Unemployment

In the second quarter of 2024, the population of unemployed persons (aged 15–74) in Mazowieckie Voivodship amounted to 74 thousand persons and decreased by 12.9% compared to the first quarter of 2024.

Compared to the previous quarter, the number of unemployed men decreased (by 29.8%), and the number of women increased (by 7.9%). There was an increase both among urban (by 2.0%), and a decrease among rural residents (by 35.3%).

The total unemployment rate in the Voivodship amounted to 2.6% and decreased by 0.4 pp compared to the first quarter of 2024. In urban areas it was 2.7% (by 0.4 pp higher than in rural areas). For working age population the unemployment rate was 2.7%.

Compared to the first quarter of 2024, the unemployment rate decreased among men (by 1.0 pp), and increased among women (by 0.2 pp). There was a decrease in rural areas (by 1.2 pp), and in urban areas it remained at the same level.

An average time of job seeking by unemployed persons amounted to 6.6 months. Men looked for a job for 7.3 months on average (by 1.3 months longer than women), and urban residents for 6.5 months (by 0.6 month shorter than rural residents).

The number of unemployed men decreased by 30%, and the number of women increased by nearly 8%

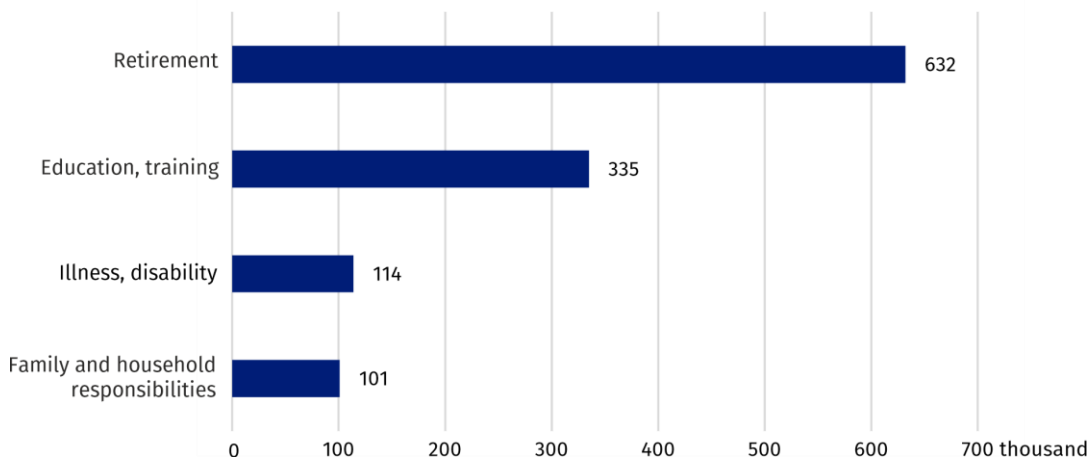
Unemployed men looked for a job longer than women, and urban residents shorter than rural residents

Economically inactive persons

In the second quarter of 2024, in Mazowieckie Voivodship, 1627 thousand persons remained economically inactive, which accounted for 36.2% of total population aged 15-89 (in urban areas – 35.4% and in rural areas – 37.8%). Still, in this population women were the majority – 60.1%. Among economically inactive persons, persons with lower secondary and less education predominated – 24.6%. Working age population made up 28.4% of total economically inactive persons.

Among the economically inactive persons women predominate (more than 60%)

Chart 6. Economically inactive persons aged 15–74 by selected causes of economic inactivity in Q2 2024



Compared to the first quarter of 2024, the population of economically inactive persons decreased (among men it decreased by 1.8%, and among women increased by 0.5%). Taking into account the place of residence, there was a decrease in the number of economically inactive persons among urban residents (by 1.2%), and an increase among rural residents (by 1.0%).

Out of total economically inactive persons (aged 15-74), 50.4% accounted for persons who did not seek work because of being retired. Other reasons for economic inactivity were: education and training – 26.7%, illness or disability – 9.1%, family and household responsibilities – 8.0%.

In case of quoting Statistics Poland data, please provide information: “Source of data: Statistics Poland”, and in case of publishing calculations made on data published by Statistics Poland, please include the following disclaimer: “Own study based on figures from Statistics Poland”.

Prepared by:
Statistical Office in Warszawa
Director Agnieszka Ajdyn
Phone: (+48 22) 464 23 15

Issued by:
Statistical Information Centre
Marcin Kałuski
Phone: (+48) 783 940 141

Press office

Phone: (+48) 783 940 141

e-mail: m.kaluski@stat.gov.pl

-  warszawa.stat.gov.pl/en/
-  [@Warszawa_STAT](https://twitter.com/Warszawa_STAT)
-  [@UrzadStatystycznywWarszawie](https://www.facebook.com/@UrzadStatystycznywWarszawie)
-  [gus_stat](https://www.instagram.com/gus_stat)
-  [glownyurządstatystycznygus](https://www.youtube.com/glownyurządstatystycznygus)
-  [glownyurządstatystyczny](https://www.linkedin.com/company/glownyurządstatystyczny)

Related information

[Methodological report. Labour force survey](#)

[Labour Force Survey in Poland](#)

[Employed, unemployed and economically inactive persons \(preliminary LFS results\)](#)

Evaluate
the study



Data available in databases

[Local Data Bank/Labour market](#)

Terms used in official statistics

[Activity rate by LFS](#)

[Employment rate by LFS](#)

[Unemployment rate](#)