

Economic activity of population in Mazowieckie Voivodship, I quarter 2020

29th June 2020

↑ 40.3%

Increase in the number of unemployed persons compared to the previous quarter

The situation on the labor market has deteriorated. An increase in the number of the unemployed and economically inactive persons and a decrease in the number of persons employed in the labour market in relation to the fourth quarter of 2019 had a negative impact on the state of the economy. An increase in the ratio of non-working age population to working age population was also observed.

Economic activity of population aged 15 and more

In the first quarter of 2020, among the total population of Mazowieckie Voivodship aged 15 and more, 58.5% represented employed persons, 2.3% – unemployed persons, and 39.2% – economically inactive persons. This means that less than half of the population aged 15 and more (41.5%) did not work. In urban and rural areas this structure looked similar. However, significant differences were visible in the structure of men and women. Without employment (economically inactive and unemployed) were 34.2% of men and 48.0% of women.

42% of population aged 15 and more did not work

Chart 1. Structure of population aged 15 and more by sex, I quarter 2019

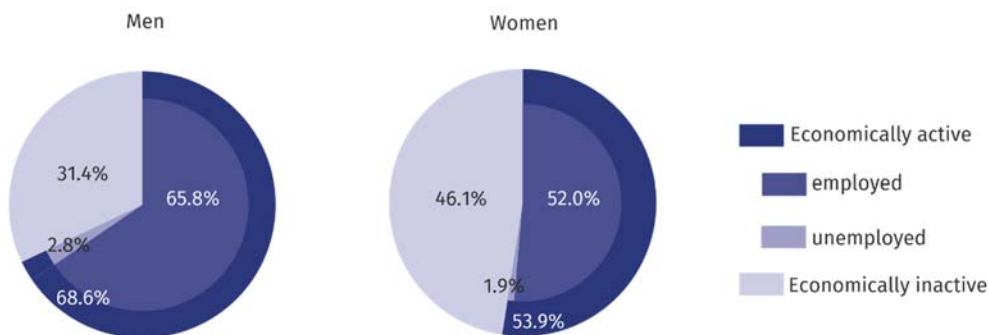
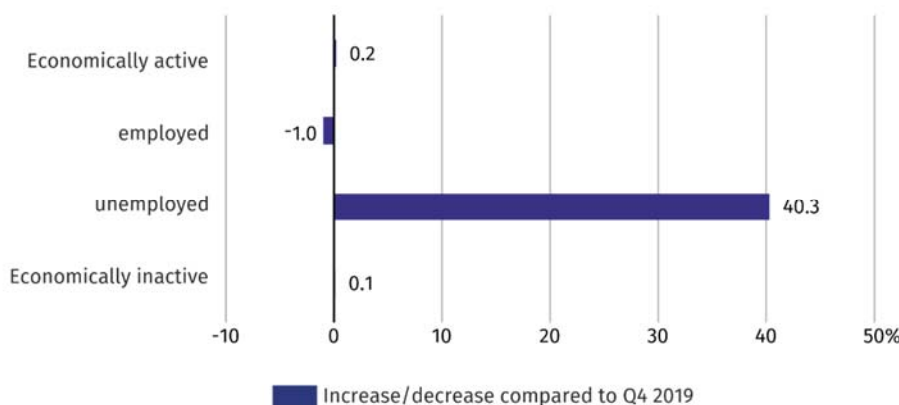


Chart 2. Changes compared to IV quarter 2019

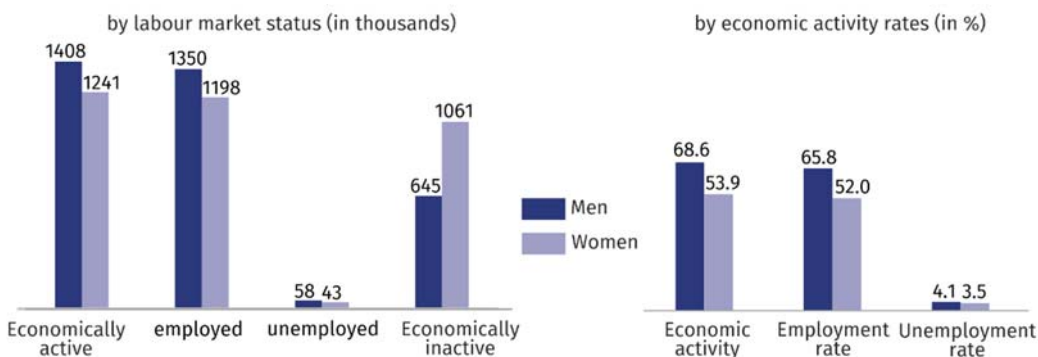


Increase in unemployed persons by 40% compared to the previous quarter

In comparison with the fourth quarter of 2019, the number of unemployed and economically inactive persons increased by 40.3% and 0.1%, respectively. There was a decrease in the number of employed persons by 1.0%. There was an increase in the ratio of non-working to working population. In the first quarter of 2019, there were 709 unemployed and economically inactive persons per 1000 employed, while in the fourth quarter of 2019 – 691.

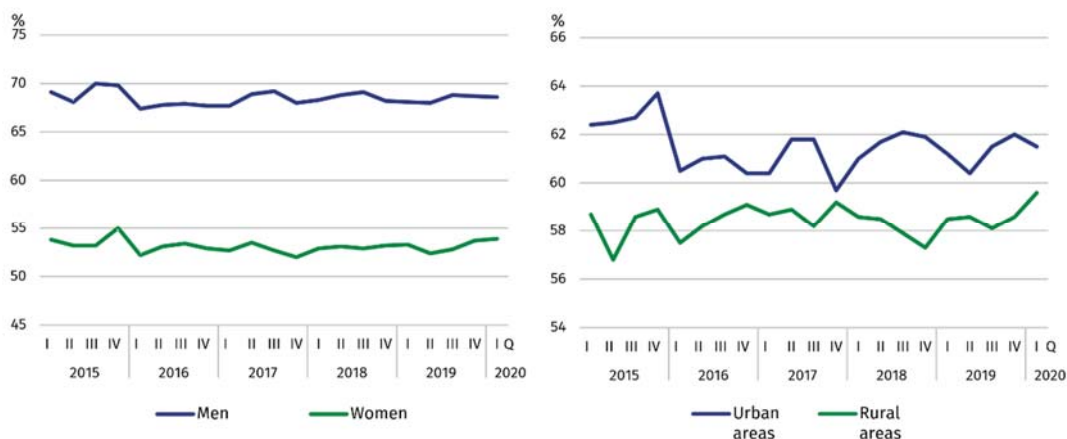
There were 709 unemployed and economically inactive persons per 1000 employed

Chart 3. Economic activity of population in I quarter 2019



The economic activity rate was 60.8% and did not change compared to the previous quarter. There was an increase in the level of economic activity in the female population (by 0.2 pp), while a decrease in the male population (by 0.1 pp). This rate increased in rural area (by 1.0%) and decreased in urban areas (by 0.5 pp).

Chart 4. Economic activity rate by sex and place of residence



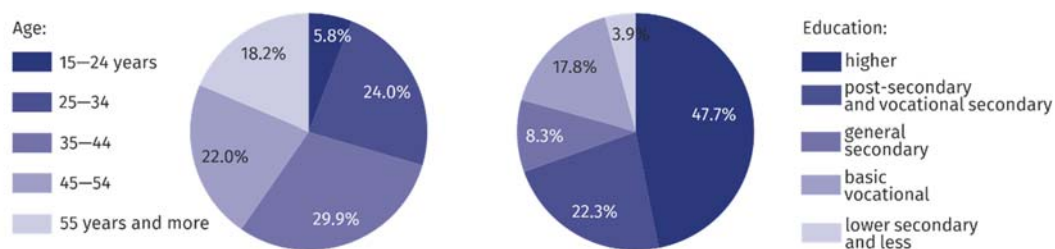
The highest value of the rate in terms of age was recorded in the age group 35–44, which was 89.3%, and the lowest among persons aged 55 and more – 29.5%. For working age population, this rate was 82.1%.

Employed persons

In the first quarter of 2019, in Mazowieckie Voivodship, the population of employed persons counted 2548 thousand persons, and employment rate was estimated at 58.5% (a decrease by 0.7pp compared to the previous quarter).

In comparison with IV quarter 2019, the number of employed persons decreased by 1.0%. A decrease was recorded both in males (by 1.2%) and in females (by 0.6%). The number of employed persons decreased among urban (by 1.7%) and increased among rural residents (by 0.4%).

Chart 5. Structure of employed persons by age and education in I quarter 2020



In I quarter 2020, the highest employment rate was recorded among persons aged 25–34 and 35–44 years (86.1%), and the lowest among persons aged 55 and more (28.7%).

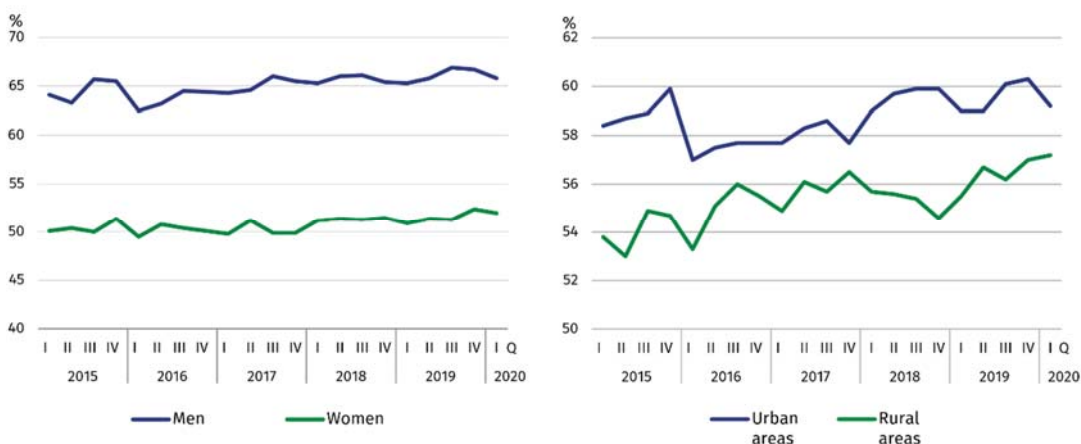
The highest decrease in the employment rate was noted among persons aged 35–44 (by 2.4 pp), and the increase among persons aged 25–34 years (by 1.2 pp).

For working age population, the employment rate was estimated at 78.9% (a decrease by 0.9 pp compared to IV quarter 2019).

Among employed persons according to the level of education, the highest employment rate recorded persons with higher education – 78.6%, and the lowest among persons with lower secondary and less education – 15.7%.

The largest decrease in the employment rate recorded persons with general secondary education (by 2.9 pp), and an increase only among persons with lower secondary and less education (0.5 pp).

Chart 6. Employment rate by sex and place of residence

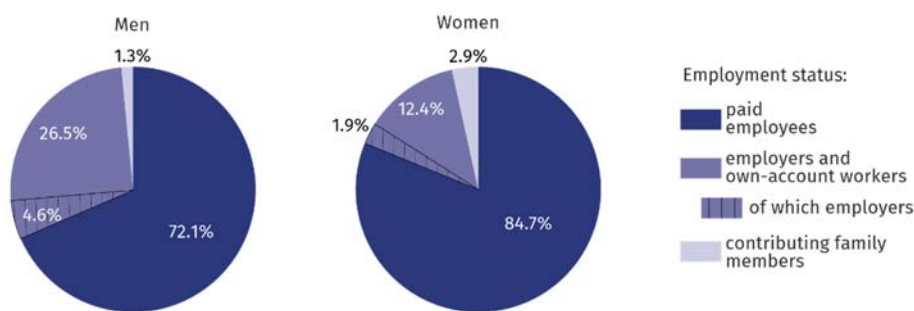


In I quarter 2020, 1989 thousand persons worked as paid employees (i.e. 78,1% of the total employed), and their number decreased compared to IV quarter of 2019 (by 1.7%). The increase was recorded both among employers and own account workers (from 498 thousand to 506 thousand), as well as among contributing family workers (from 50 thousand to 53 thousand).

The vast majority of employed persons supported the private sector (74.8% of the total employed). Of these, the majority (58.0%) were men. The situation was different among paid employees in public sector, where among 641 thousand employed persons predominated women (61.9%). 80.5% of paid employees worked for an indefinite period (an increase by 0.9 pp compared to the first quarter of 2019).

75% of total employed persons worked in private sector

Chart 7. Structure of employed persons by employment status in I quarter 2020



27% of men and 12% of women worked as employers and own-account workers

Unemployed persons

In I quarter 2020, the population of unemployed persons in Mazowieckie Voivodship amounted to 101 thousand persons and increased by 40.3% compared to IV quarter 2019.

Compared to the previous quarter, both the number of unemployed women (by 43.3%) and men (by 38.1%) increased. There was an increase both among rural (by 48.0%), and urban population (by 36.2%).

Increase in the number of unemployed women by 43%, and among men by 38%

Chart 8. Unemployment rate by sex and place of residence



The total unemployment rate in the voivodship amounted to 3.8% and increased compared to IV quarter 2019 by 1.1 pp. In urban areas it was 3.7% (by 0.3 pp lower than in rural areas). For working age population the unemployment rate was 3.9%.

In comparison with IV quarter 2019, the unemployment rate increased both among women and men (by 1.1 pp each). The increase in the unemployment rate was recorded both in rural (by 1.3 pp), and in urban areas (by 1.0 pp).

The highest decrease was noted among persons with lower secondary and less education (by 3.4 pp), and the highest increase among persons with basic vocational education, post-secondary and vocational secondary (by 0.9 pp each).

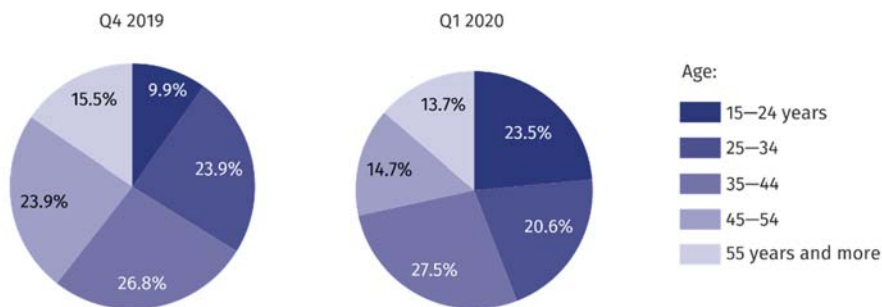
The highest unemployment rate was noted among persons with lower secondary and less education (by 14.5%), and the lowest among persons with higher education (2.3%).

The highest increase was noted among persons with lower secondary and less education (by 8.6 pp), and the decrease among persons with basic vocational education (by 0.7 pp).

The highest unemployment rate was among persons aged 15–24 years (by 13.9%), and the lowest among persons aged 45–54 years (2.6%).

The largest increase in the unemployment rate was noted among persons aged 15–24 (by 9.7 pp), and the largest decrease among persons aged 45–54 (by 0.4 pp).

Chart 9. Structure of unemployed persons by age



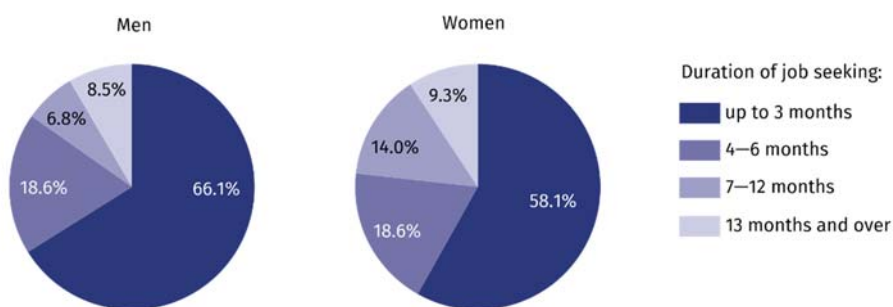
An average time of job seeking by unemployed persons amounted to 6.9 months. Men and urban residents looked for a job shorter than women and rural residents. Men looked for a job for 6.3 months on average (by 1.4 months shorter than women), and urban residents for 6.6 months (by 0.7 months shorter than rural residents).

The population of long-term unemployed persons (13 months and more) amounted to 8.9% of the total unemployed. Long-term unemployment was more frequent among women than men (9.3% compared to 8.6%) and more frequent among rural than urban residents (13.5% compared to 4.7%).

Men and urban residents looked for a job shorter than women and rural residents

Long-term unemployment was more frequent among women than among men

Chart 10. Structure of unemployed persons by duration of job seeking in I quarter 2020

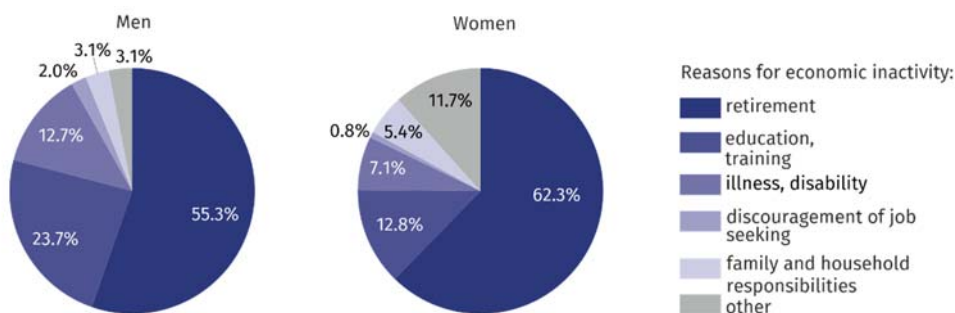


Economically inactive persons

In I quarter 2020, in Mazowieckie Voivodship, 1706 thousand persons remained economically inactive, which accounted for 39.2% of total population aged 15 and more (in rural areas – 40.4%, in urban areas – 38.4%). Still, in this population women were the majority – 62.2%. Among economically inactive persons, as in previous periods, persons with lower secondary and less education predominated – 30.4%. Working age population made up 32.0% of total economically inactive persons.

Among the economically inactive women predominate – 62%

Chart 11. Structure of economically inactive persons by causes of economic inactivity in I quarter 2020



In relation to IV quarter 2020, the population of economically inactive persons increased by 0.1%. The increase was recorded in the male population (by 0.6%), and a decrease in the fe-

male population (by 0.4%). Taking into account a place of residence, an increase in the number of economically inactive persons was noted among urban residents (by 1.3%), and a decrease among rural residents (by 2.3%).

Out of total economically inactive persons, 59.7% accounted for persons who did not take up work because of being retired. Other reasons for economic inactivity were: education and training – 16.9%, illness or disability – 9.3%, family and household responsibilities – 4.5%. The population of persons discouraged by inefficiency of job seeking amounted to 0 thousand, i.e. 1.2% of total economically inactive persons.

Table 1. Economic activity of population aged 15 years and more by selected indicators

SPECIFICATION	Q4 2019	Q1 2020	
	in %		increase/decrease in pp compared to the previous period
ECONOMIC ACTIVITY RATE			
TOTAL	60,8	60,8	-
men	68,7	68,6	-0,1
women	53,7	53,9	0,2
Urban areas	62,0	61,5	-0,5
Rural areas	58,6	59,6	1,0
EMPLOYMENT RATE			
TOTAL	59,2	58,5	-0,7
men	66,7	65,8	-0,9
women	52,4	52,0	-0,4
Urban areas	60,3	59,2	-1,1
Rural areas	57,0	57,2	0,2
UNEMPLOYMENT RATE			
TOTAL	2,7	3,8	1,1
men	3,0	4,1	1,1
women	2,4	3,5	1,1
Urban areas	2,7	3,7	1,0
Rural areas	2,7	4,0	1,3

Table 2. Economic activity of population aged 15 and more by labour market status

SPECIFICATION	Q4 2019	Q1 2020	
	in thousands		Q1 2019=100
EMPLOYED PERSONS			
TOTAL	2 573	2 548	99,0
men	1 367	1 350	98,8
women	1 205	1 198	99,4
Urban areas	1 682	1 654	98,3
Rural areas	890	894	100,4
UNEMPLOYED PERSONS			
TOTAL	72	101	140,3
men	42	58	138,1
women	30	43	143,3
Urban areas	47	64	136,2
Rural areas	25	37	148,0
ECONOMICALLY INACTIVE PERSONS			
TOTAL	1 705	1 706	100,1
men	641	645	100,6
women	1 065	1 061	99,6
Urban areas	1 059	1 073	101,3
Rural areas	647	632	97,7

Table 3. Employment rate and unemployment rate by age

SPECIFICATION	Q4 2019	Q1 2020	
	in %		increase/decrease in pp compared to the previous period
EMPLOYMENT RATE			
TOTAL	59,2	58,5	-0,7
15–24 years	32,9	30,8	-2,1
25–34	84,9	86,1	1,2
35–44	88,5	86,1	-2,4
45–54	86,1	85,9	-0,2
55 years and more	28,9	28,7	-0,2
UNEMPLOYMENT RATE			
TOTAL	2,7	3,8	1,1
15–24 years	4,2	13,9	9,7
25–34	2,7	3,3	0,6
35–44	2,4	3,5	1,1
45–54	3,0	2,6	-0,4
55 years and more	2,3	2,9	0,6

Table 4. Employment rate and unemployment rate by level of education

SPECIFICATION	Q4 2019	Q1 2020	
	in %		increase/decrease in pp compared to the previous period
EMPLOYMENT RATE			
TOTAL	59,2	58,5	-0,7
Higher	79,5	78,6	-0,9
Post-secondary and vocational secondary	58,6	58,5	-0,1
General secondary	55,0	52,1	-2,9
Basic vocational	56,9	56,8	-0,1
Lower secondary, primary and incomplete primary	15,2	15,7	0,5

Table 4. Employment rate and unemployment rate by level of education (cont.)

SPECIFICATION	Q4 2019	Q1 2020	
	in %	increase/decrease in pp compared to the previous period	
UNEMPLOYMENT RATE			
TOTAL	2,7	3,8	1,1
Higher	1,6	2,3	0,7
Post-secondary and vocational secondary	3,6	3,9	0,3
General secondary	2,9	7,8	4,9
Basic vocational	3,9	3,2	0,7
Lower secondary, primary and incomplete primary	5,9	14,5	8,6

Note. The sums of certain data may be different from the "total" item. This is due to rounding made when generalizing the results of the survey.

In the case of quoting data from Statistics Poland, please provide information: "Source of data – Statistics Poland", and in the case of publishing calculations made on data published by Statistics Poland, please provide information: "Own study based on Statistics Poland data".

Prepared by:
Statistical Office in Warszawa
Director Zofia Kozłowska
Tel.: (+48 22) 464 23 15

Issued by:
Statistical Information Centre
Marcin Kałuski
Tel.: (+48 22) 464 20 91
[**m.kaluski@stat.gov.pl**](mailto:m.kaluski@stat.gov.pl)

Press office

Tel.: (+48 22) 464 20 91

e-mail: [**m.kaluski@stat.gov.pl**](mailto:m.kaluski@stat.gov.pl)



warszawa.stat.gov.pl/en/



[@Warszawa_STAT](https://twitter.com/Warszawa_STAT)

Related information

[Methodological report. Labour Force Survey](#)

[Labour force survey in Poland](#)

[Monitoring of the labour market](#)

Data available in databases

[Local Data Bank/Labour market](#)

Terms used in official statistics

[Activity rate](#)

[Employment rate](#)

[Unemployment rate](#)

