

# Economic activity of population in Mazowieckie Voivodship, IV quarter 2019

27th March 2020

**↑0.5 pp**

Increase in employment rate compared to the previous quarter

The decrease in the number of economically inactive persons on the labour market and the increase in the employment rate compared to III quarter 2019 had a positive impact on the state of the economy. A reduction in the ratio of non-working age population to working age population was also observed. The situation on the labour market has not deteriorated despite the increase in the number of unemployed.

## Economic activity of population aged 15 and more

In the 4th quarter of 2019, among the total population of Mazowieckie Voivodship aged 15 and more, 59.2% represented employed persons, 1.7% – unemployed persons, and 39.2% – economically inactive persons. This means that less than half of the population aged 15 and more (40.9%) did not work. In urban and rural areas this structure looked similar. However, significant differences were visible in the structure of men and women. Without employment (economically inactive and unemployed) were 33.3% of men and 47.6% of women.

41% of population aged 15 and more did not work

Chart 1. Structure of population aged 15 and more by sex, IV quarter 2019

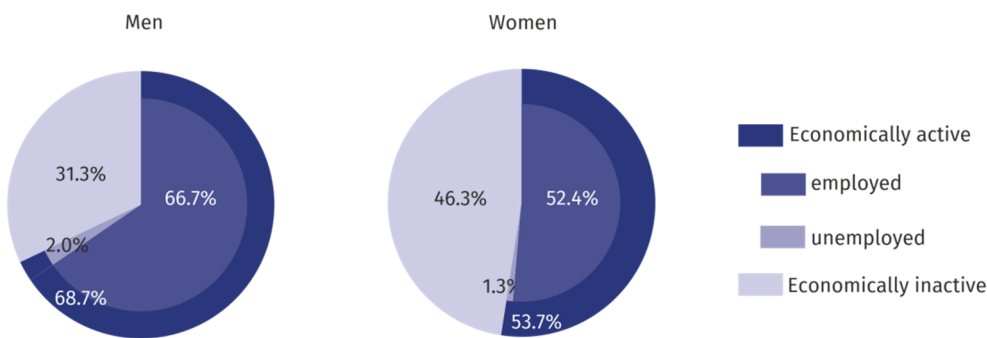
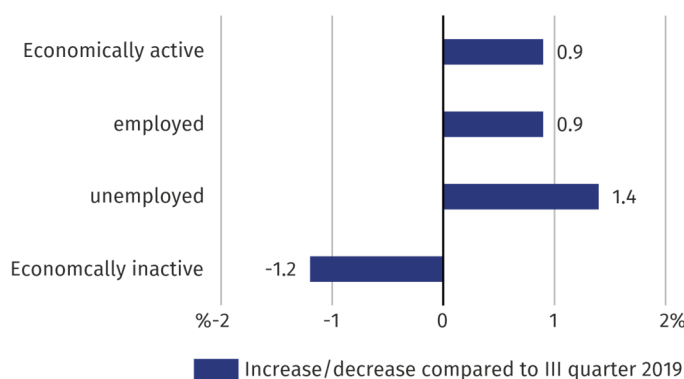


Chart 2. Changes compared to III quarter 2019

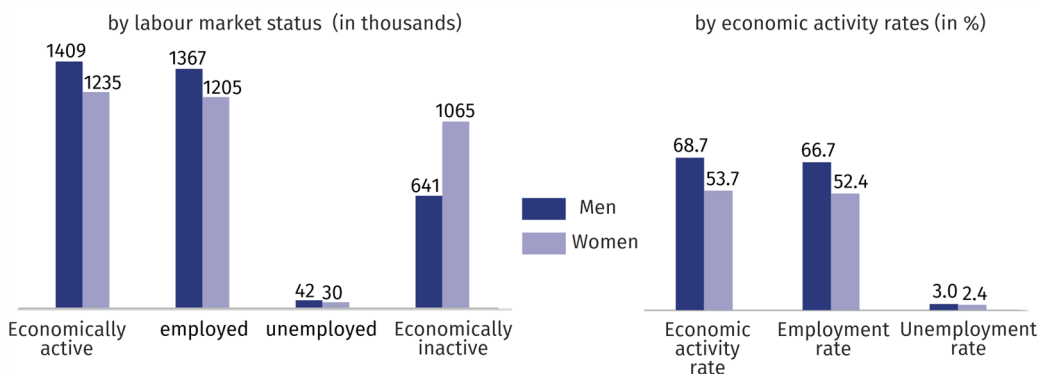


Increase in unemployed persons by 1% compared to the previous quarter

In comparison with III quarter 2019, the number of employed and unemployed persons increased by 0.9% and 1.4%, respectively. There was a decrease in the number of economically inactive persons (by 1.2%). There was a decrease in the ratio of non-working population to working population. In IV quarter 2019, there were 691 unemployed and economically inactive persons per 1000 employed persons, while in III quarter 2019 – 705.

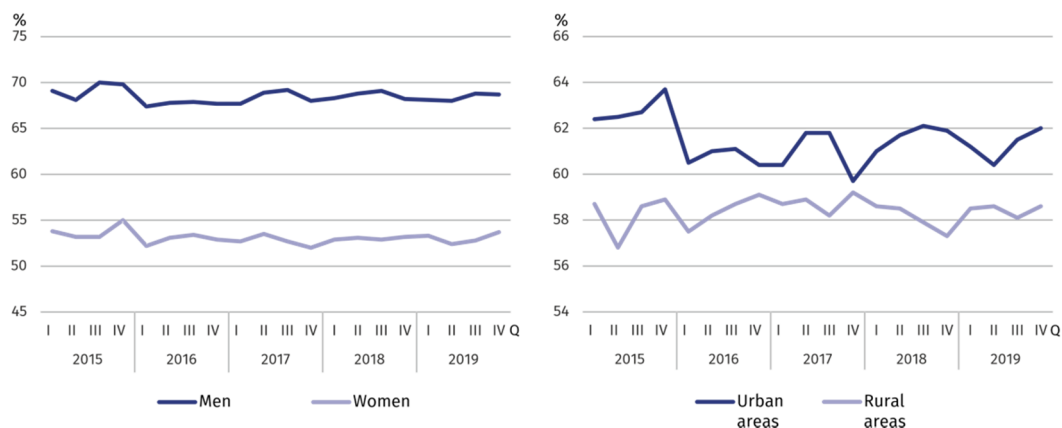
There were 691 unemployed and economically inactive persons per 1000 employed

**Chart 3. Economic activity of population in IV quarter 2019**



The economic activity rate was 60.8% and increased compared to the previous quarter by 0.5 pp. There was an increase in the level of economic activity in the female population (by 0.9 pp), while a decrease in the male population (by 0.4 pp). This rate also increased both in urban and in rural areas (by 0.5 pp each).

**Chart 4. Economic activity rate by sex and place of residence**



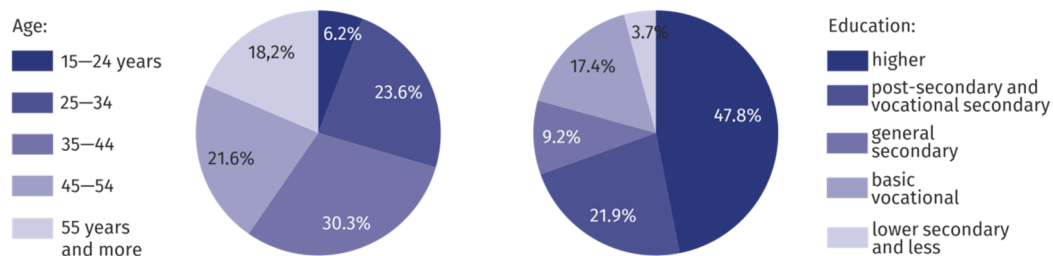
The highest value of the rate in terms of age was recorded in the age group 35–44, which was 90.8%, and the lowest among persons aged 55 and more – 29.6%. For working age population, this rate was 82.0%.

### Employed persons

In IV quarter 2019, in Mazowieckie Voivodship, the population of employed persons counted 2573 thousand persons, and employment rate was estimated at 59.2%.

In comparison with III quarter 2019, the number of employed persons increased by 0.9%. An increase was recorded in the female population (by 2.2%), while a decrease in the male population (by 0.2%). The number of employed persons increased both among urban (by 0.5%) and rural residents (by 1.6%).

**Chart 5. Structure of employed persons by age and education in IV quarter 2019**



In IV quarter 2019, the highest employment rate was recorded among persons aged 35–44 (88.5%), and the lowest among persons aged 55 and more (28.9%).

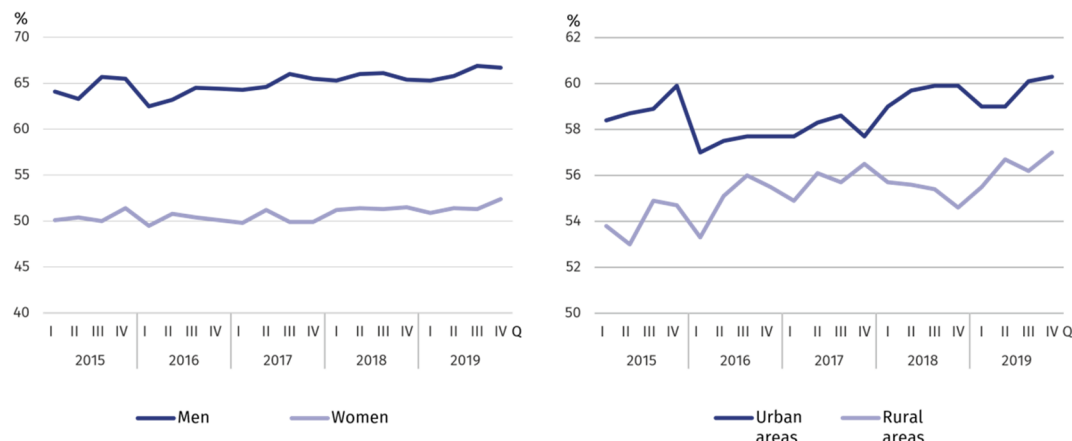
The highest increase in the employment rate was noted among persons aged 15–24 (by 2.0 pp), and the decrease among persons aged 55 and more (by 0.4 pp).

For working age population, the employment rate was estimated at 79.8% (an increase by 0.5 pp compared to III quarter 2019).

Among employed persons according to the level of education, the highest employment rate recorded persons with higher education – 79.5%, and the lowest among persons with lower secondary and less education – 15.2%.

The largest increase in the employment rate recorded persons with general secondary education (by 2.2 pp), and the largest drop – persons with lower secondary and less education (1.3 pp).

**Chart 6. Employment rate by sex and place of residence**

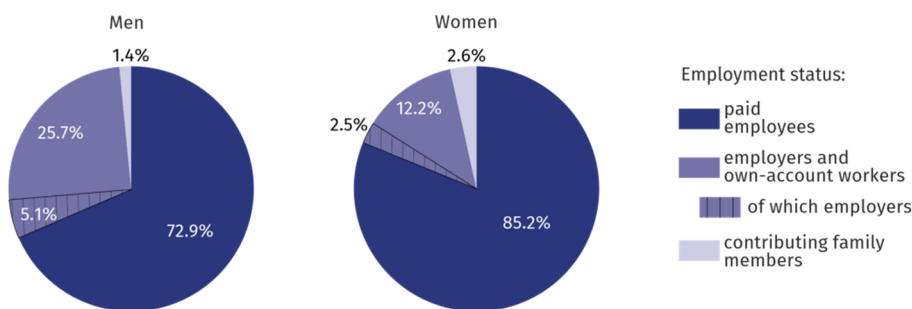


In IV quarter 2019, 2024 thousand persons worked as paid employees (i.e. 78.7% of the total employed), and their number increased compared to III quarter of 2019 (by 2.9%). The decrease was recorded among employers and own account workers (from 519 thousand to 498 thousand), as well as among contributing family workers (from 64 thousand to 50 thousand).

The vast majority of employed persons supported the private sector (75.6% of the total employed). Of these, the majority (58.1%) were men. The situation was different among paid employees in public sector, where among 628 thousand employed persons predominated women (62.3%). 79.6% of paid employees worked for an indefinite period (the same as in III quarter 2019).

76% of total employed persons worked in private sector

**Chart 7. Structure of employed persons by employment status in IV quarter 2019**



26% of men and 12% of women worked as employers and own-account workers

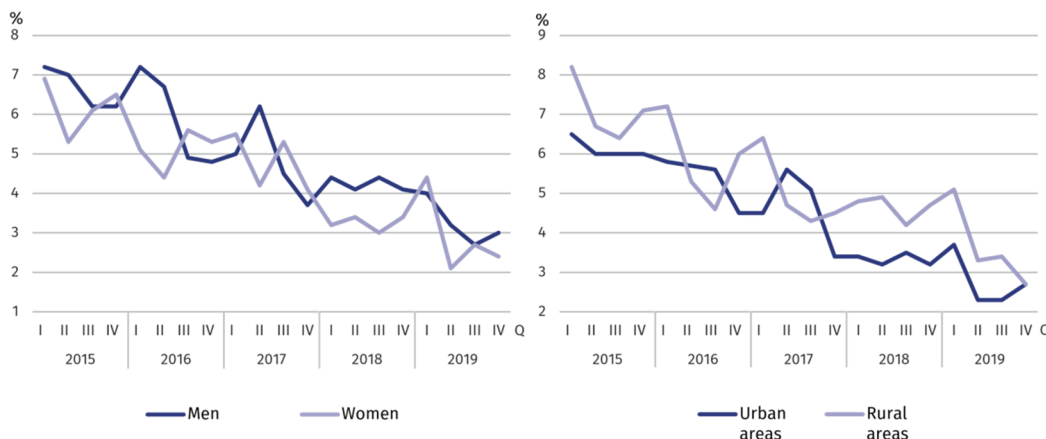
**Unemployed persons**

In IV quarter 2019, the population of unemployed persons in Mazowieckie Voivodship amounted to 72 thousand persons and increased by 1.4% compared to III quarter 2019.

Compared to the previous quarter, the number of unemployed women decreased (by 9.1%) and the number of men increased (by 10.5%). There was a decrease among rural population (by 19.4%), and an increase among urban population (by 17.5%).

Decrease in the number of unemployed women by 9%, and an increase among men

**Chart 8. Unemployment rate by sex and place of residence**



The total unemployment rate in the voivodship amounted to 2.7% and did not change compared to III quarter 2019. In urban and in rural areas it was 2.7%. For workingagepopulation the unemploymentrate was 2.8%.

In comparison with III quarter 2019, the unemployment rate decreased among women (by 0.3 pp) and increased among men (by 0.3 pp). The decrease in the unemployment rate was recorded in rural areas (by 0.7 pp), and an increase in urban areas (by 0.4 pp).

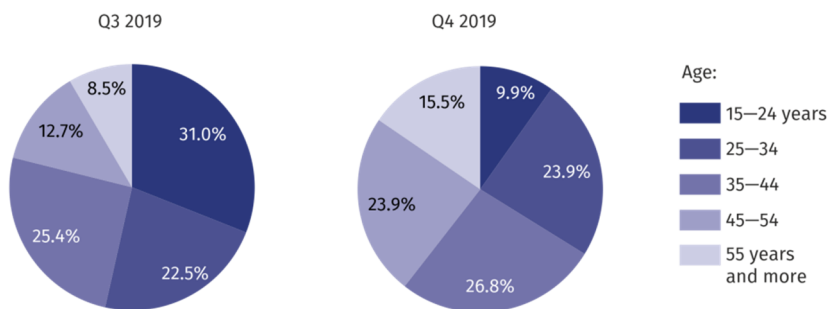
The lowest unemployment rate was noted among persons with higher education (1.6%), and the highest among persons with lower secondary and less education (5.9%).

The highest decrease was noted among persons with lower secondary and less education (by 3.4 pp), and the highest increase among persons with basic vocational education, post-secondary and vocational secondary (by 0.9 pp each).

The lowest unemployment rate was among persons aged 55 and more (2.3%), and the highest among persons aged 15–24 years (4.2%).

The largest decrease in the unemployment rate was noted among persons aged aged 15–24 (by 8.6 pp), and the largest increase among persons aged 45–54 (by 1.4 pp).

**Chart 9. Structure of unemployed persons by age**



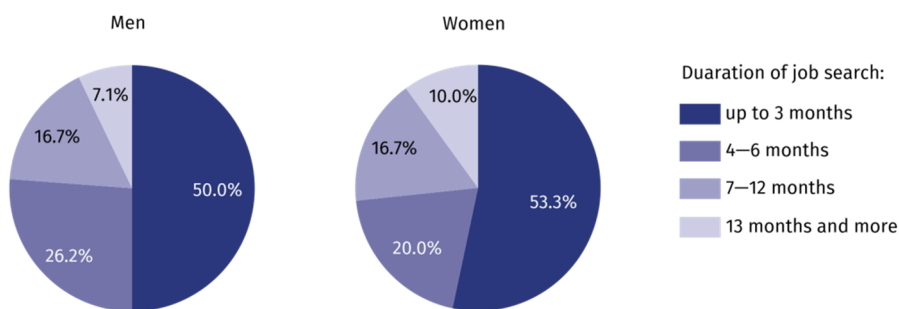
An average time of job seeking by unemployed persons amounted to 7 months. Men and urban residents looked for a job shorter than women and rural residents. Men looked for a job for 6.6 months on average (by 0.9 month shorter than women), and urban residents also for 6.6 months (by 0.8 months shorter than rural residents).

The population of long-term unemployed persons (13 months and more) amounted to 6.0 thousand, which represented 8.3% of the total unemployed. Long-term unemployment was more frequent among women than men (10.0% compared to 7.1%) and more frequent among rural than among urban residents (12.0% compared to 6.4%).

Men and urban residents looked for a job shorter than women and rural residents

Long-term unemployment was more frequent among women than among men

**Chart 10. Structure of unemployed persons by duration of job seeking in IV quarter 2019**

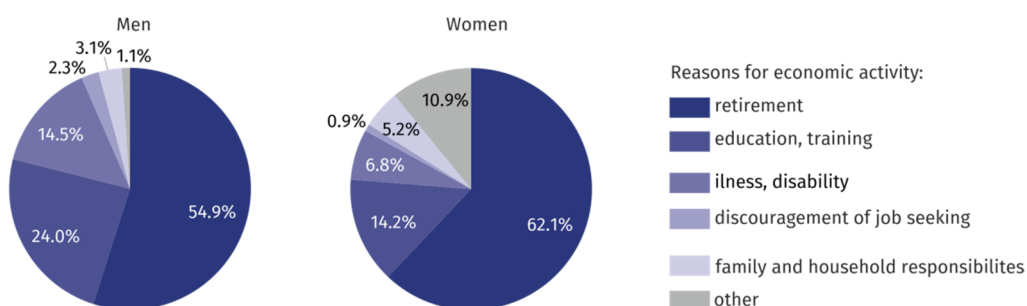


**Economically inactive persons**

In IV quarter 2019, in Mazowieckie Voivodship, 1705 thousand persons remained economically inactive, which accounted for 39.2% of total population aged 15 and more (in rural areas – 41.4%, in urban areas – 38.0%). Still, in this population women were the majority – 62.5%. Among economically inactive persons, as in previous periods, persons with lower secondary and less education predominated – 30.7%. Working age population made up 32.1% of total economically inactive persons.

Among the economically inactive women predominate – 63%

**Chart 11. Structure of economically inactive men and women by causes of economic inactivity in IV quarter of 2019**



In relation to III quarter 2019, the population of economically inactive persons decreased (by 1.2%). The decrease was also recorded in the female population (by 1.8%), and a slight increase in the male population (by 0.2%). Taking into account a place of residence, a decrease in the number of economically inactive persons was noted both among urban residents (by 1.2%), and among rural residents (by 0.9%).

Out of total economically inactive persons, 59.4% accounted for persons who did not take up work because of being retired. Other reasons for economic inactivity were: education and training – 17.9%, illness or disability – 9.7%, family and household responsibilities – 4.5%. The population of persons discouraged by inefficiency of job seeking amounted to 24 thousand, i.e. 1.4% of total economically inactive persons.

**Table 1. Economic activity of population aged 15 years and more by selected indicators**

SPECIFICATION	Q3 2019	Q4 2019	
	in %		increase/decrease in pp compared to the previous period
<b>ECONOMIC ACTIVITY RATE</b>			
<b>TOTAL</b>	<b>60,3</b>	<b>60,8</b>	<b>0,5</b>
men	68,8	68,7	-0,1
women	52,8	53,7	0,9
Urban areas	61,5	62,0	0,5
Rural areas	58,1	58,6	0,5
<b>EMPLOYMENT RATE</b>			
<b>TOTAL</b>	<b>58,7</b>	<b>59,2</b>	<b>0,5</b>
men	66,9	66,7	-0,2
women	51,3	52,4	1,1
Urban areas	60,1	60,3	0,2
Rural areas	56,2	57,0	0,8
<b>UNEMPLOYMENT RATE</b>			
<b>TOTAL</b>	<b>2,7</b>	<b>2,7</b>	<b>-</b>
men	2,7	3,0	0,3
women	2,7	2,4	-0,3
Urban areas	2,3	2,7	0,4
Rural areas	3,4	2,7	-0,7

**Table 2. Economic activity of population aged 15 and more by labour market status**

SPECIFICATION	Q3 2019	Q4 2019	
	in thousands		Q3=100
<b>EMPLOYED PERSONS</b>			
<b>TOTAL</b>	<b>2 549</b>	<b>2 573</b>	<b>100,9</b>
men	1 370	1 367	99,8
women	1 179	1 205	102,2
Urban areas	1 674	1 682	100,5
Rural areas	876	890	101,6
<b>UNEMPLOYED PERSONS</b>			
<b>TOTAL</b>	<b>71</b>	<b>72</b>	<b>101,4</b>
men	38	42	110,5
women	33	30	90,9
Urban areas	40	47	117,5
Rural areas	31	25	80,6
<b>ECONOMICALLY INACTIVE</b>			
<b>TOTAL</b>	<b>1 725</b>	<b>1 705</b>	<b>98,8</b>
men	640	641	100,2
women	1 085	1 065	98,2
Urban areas	1 072	1 059	98,8
Rural areas	653	647	99,1

**Table 3. Employment rate and unemployment rate by age**

SPECIFICATION	Q3 2019	Q4 2019	
	in %		increase/decrease in pp compared to the previous period
<b>EMPLOYMENT RATE</b>			
<b>TOTAL</b>	<b>58,7</b>	<b>59,2</b>	<b>0,5</b>
15–24 years	30,9	32,9	2,0
25–34	83,6	84,9	1,3
35–44	87,4	88,5	1,1
45–54	86,4	86,1	–0,3
55 years and more	29,3	28,9	–0,4

**Table 3. Employment rate and unemployment rate by age (cont.)**

SPECIFICATION	Q3 2019	Q4 2019	
	in %	increase/decrease in pp compared to the previous period	
<b>UNEMPLOYMENT RATE</b>			
<b>TOTAL</b>	<b>2,7</b>	<b>2,7</b>	<b>-</b>
15-24 years	12,8	4,2	-8,6
25-34	2,6	2,7	0,1
35-44	2,3	2,4	0,1
45-54	1,6	3,0	1,4
55 years and more	1,3	2,3	1,0

**Table 4. Employment rate and unemployment rate by level of education**

SPECIFICATION	Q3 2019	Q4 2019	
	in %	increase/decrease in pp compared to the previous period	
<b>EMPLOYMENT RATE</b>			
<b>TOTAL</b>	<b>58,7</b>	<b>59,2</b>	<b>0,5</b>
Higher	80,1	79,5	-0,6
Post-secondary and vocational secondary	59,2	58,6	-0,6
General secondary	52,8	55,0	2,2
Basic vocational	55,3	56,9	1,6
Lower secondary, primary and incomplete primary	16,5	15,2	-1,3
<b>UNEMPLOYMENT RATE</b>			
<b>TOTAL</b>	<b>2,7</b>	<b>2,7</b>	<b>-</b>
Higher	1,6	1,6	-
Post-secondary and vocational secondary	2,7	3,6	0,9
General secondary	4,2	2,9	-1,3
Basic vocational	3,0	3,9	0,9
Lower secondary, primary and incomplete primary	9,3	5,9	-3,4

Note. The sums of certain data may be different from the "total" item. This is due to rounding made when generalizing the results of the survey.



Prepared by:  
**Statistical Office in Warszawa**  
**Director Zofia Kozłowska**  
Tel.: (+48 22) 464 23 15

Issued by:  
**Statistical Information Centre**  
**Marcin Kałuski**  
Tel.: (+48 22) 464 20 91  
[m.kaluski@stat.gov.pl](mailto:m.kaluski@stat.gov.pl)

**Press office**

Tel.: (+48 22) 464 20 91

**e-mail: [m.kaluski@stat.gov.pl](mailto:m.kaluski@stat.gov.pl)**



[warszawa.stat.gov.pl/en/](http://warszawa.stat.gov.pl/en/)



[@Warszawa\\_STAT](https://twitter.com/Warszawa_STAT)

**Related information**

[Methodological report. Labour Force Survey](#)

[Labour force survey in Poland](#)

[Monitoring of the labour market](#)

**Data available in databases**

[Local Data Bank/Labour market](#)

**Terms used in official statistics**

[Activity rate](#)

[Employment rate](#)

[Unemployment rate](#)

