

# Economic activity of population in Mazowieckie Voivodship III quarter 2019

27th December 2019

**58.7%**

Employment rate

The decrease in the number of economically inactive persons on the labour market and the increase in the employment rate compared to II quarter 2019 had a positive impact on the state of the economy. A reduction in the ratio of non-working age population to working age population was also observed. The situation on the labour market has not deteriorated despite the increase in the number of unemployed.

Employment rate increased by 0.5 pp compared to the previous quarter

## Economic activity of population aged 15 and more

In the III quarter of 2019, among the total population of Mazowieckie Voivodship aged 15 and more, 58.2% represented employed persons, 1.6% – unemployed persons, and 39.7 – economically inactive persons. This means that less than half of the population aged 15 and more (41.3%) did not work. In urban and rural areas this structure looked similar. However, significant differences were visible in the structure of men and women. Without employment (economically inactive and unemployed) were 33.2% of men and 48.6% of women.

Chart 1. Structure of population aged 15 and more by sex in III quarter 2019

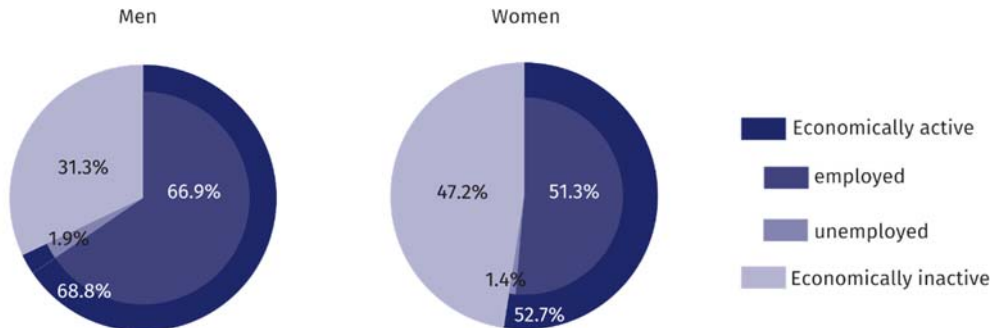
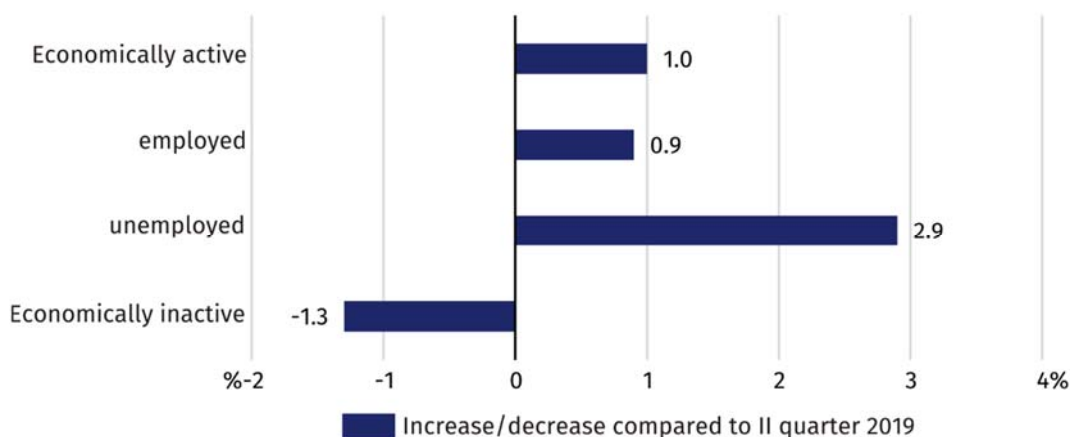


Chart 2. Changes compared to II quarter 2019

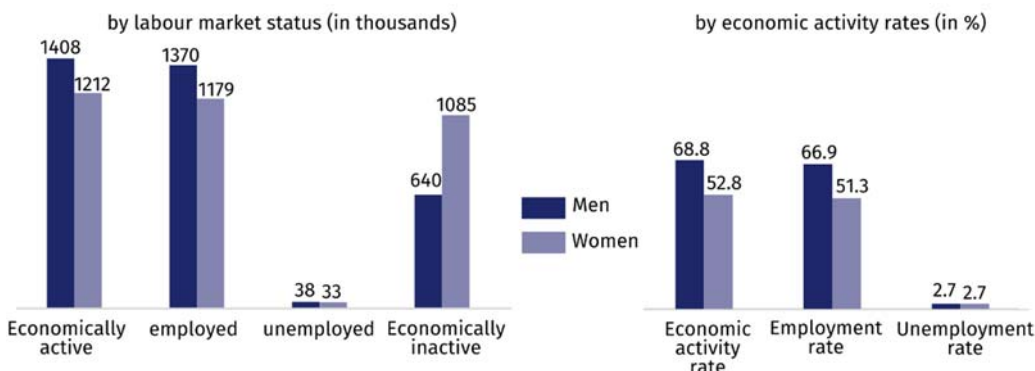


Increase in unemployed persons by 3% compared to the previous quarter

In comparison with II quarter 2019, the number of economically active, unemployed and un-employed persons increased by: 1.0%, 0.9% and 2.9%, respectively. There was a decrease in the number of economically inactive persons (by 1.3%). There was a decrease in the ratio of non-working population to working population. In III quarter 2019, there were 705 unemployed and economically inactive persons per 1000 employed persons, while in II quarter 2019 – 719.

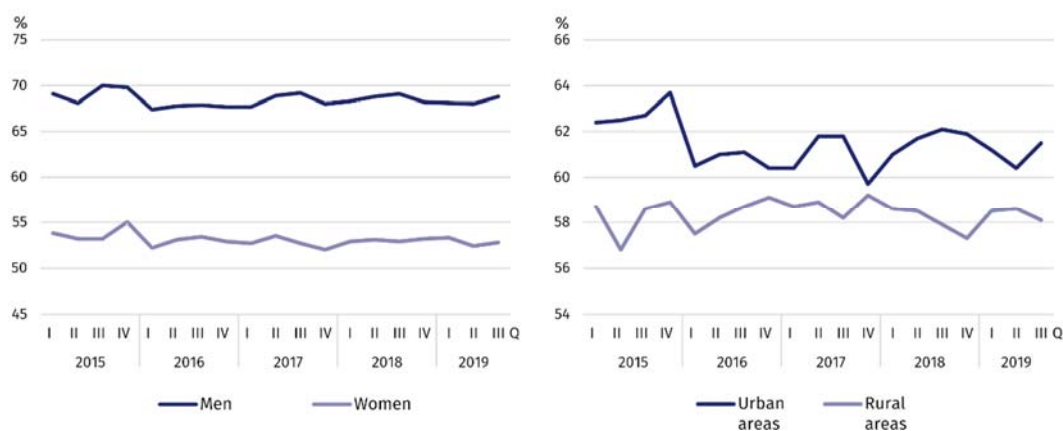
There were 705 unemployed and economically inactive persons per 1000 employed persons

**Chart 3. Economic activity of population in III quarter 2019**



The economic activity rate was 60.3% and increased compared to the previous quarter by 0.5 pp. There was an increase in the level of economic activity both in the male (by 0.8 pp) and in female population (by 0.4 pp). This rate also increased in urban areas (by 1.1 pp), whereas decreased in rural areas (by 0.5 pp).

**Chart 4. Economic activity rate by sex and place of residence**



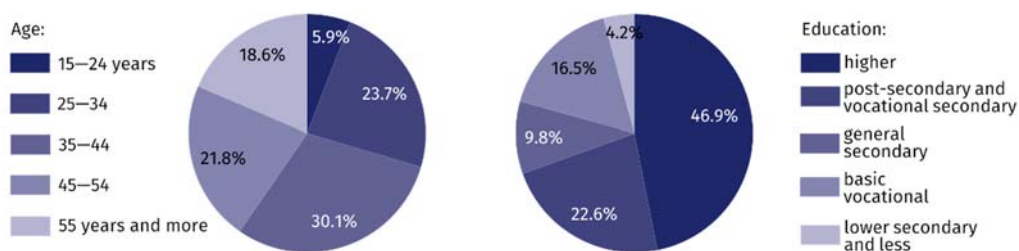
The highest value of the rate in terms of age was recorded in the age group 35–44, which was 89.4%, and the lowest among persons aged 55 and more – 29.6%. For working age population, this rate was 81.6%.

**Employed persons**

In III quarter 2019, in Mazowieckie Voivodship, the population of employed persons counted 2549 thousand persons, and employment rate was estimated at 58.7%.

In comparison with II quarter 2019, the number of employed persons increased by 0.9%. An increase was recorded in the male population (by 1.7%), while in the female population it did not change. The number of employed persons increased among rural residents (by 1.9%), and decreased among urban residents (by 0.9%).

**Chart 5. Structure of employed persons by age and education in III quarter 2019**



In III quarter 2019, the highest employment rate was recorded among persons aged 35–44 (87.4%), and the lowest among persons aged 55 and more (29.3%).

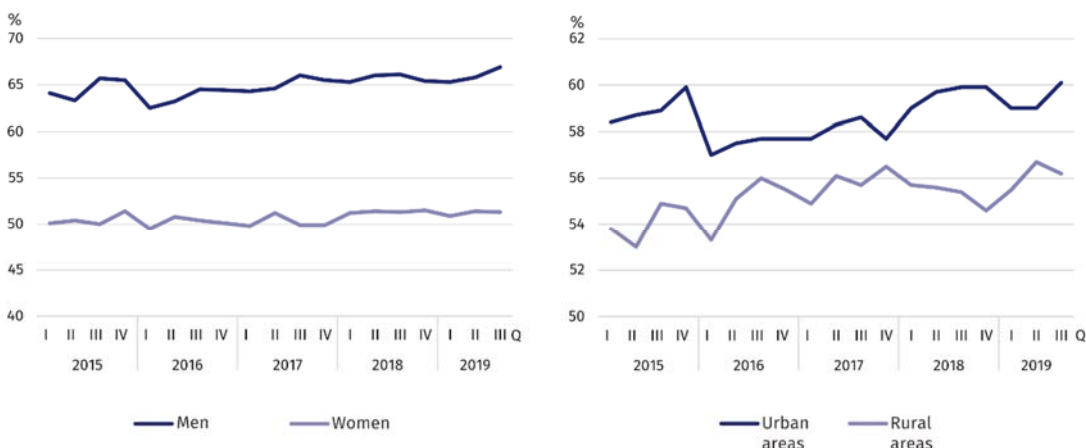
The highest increase in the employment rate was noted among persons aged 55 and more (by 1.1 pp), and the decrease among persons aged 25–34 (by 1.0 pp).

For working age population, the employment rate was estimated at 79.3% (an increase by 0.5 pp compared to II quarter 2019).

Among employed persons according to the level of education, the highest employment rate recorded persons with higher education – 80.1%, and the lowest among persons with lower secondary and less education – 16.5%.

The largest increase in the employment rate recorded persons with general secondary education (by 2.1 pp), and the largest drop – persons with post-secondary and vocational secondary education (1.1 pp).

**Chart 6. Employment rate by sex and place of residence**

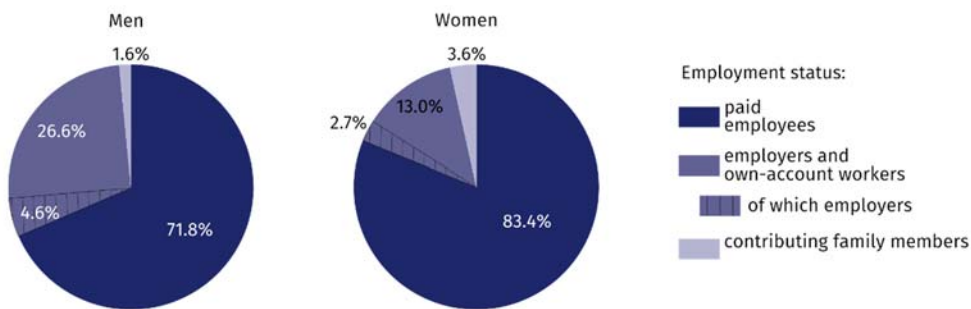


In III quarter 2019, 1967 thousand persons worked as paid employees (i.e. 77,2% of the total employed), and their number increased compared to II quarter of 2019 (by 1.3%). The decrease was recorded among employers and own account workers (from 525 thousand to 519 thousand), and an increase among contributing family workers (from 60 thousand to 64 thousand).

The vast majority of employed persons supported the private sector (75.6% of the total employed). Of these, the majority (58.2%) were men. The situation was different among paid employees in public sector, where among 622 thousand employed persons predominated women (60.1%). 79.6% of paid employees worked for an indefinite period, by 2.0 pp more than in II quarter 2019.

76% of total employed persons worked in private sector

**Chart 7. Structure of employed persons by employment status in III quarter 2019**



27% of men and 13% of women worked as employers and own-account workers

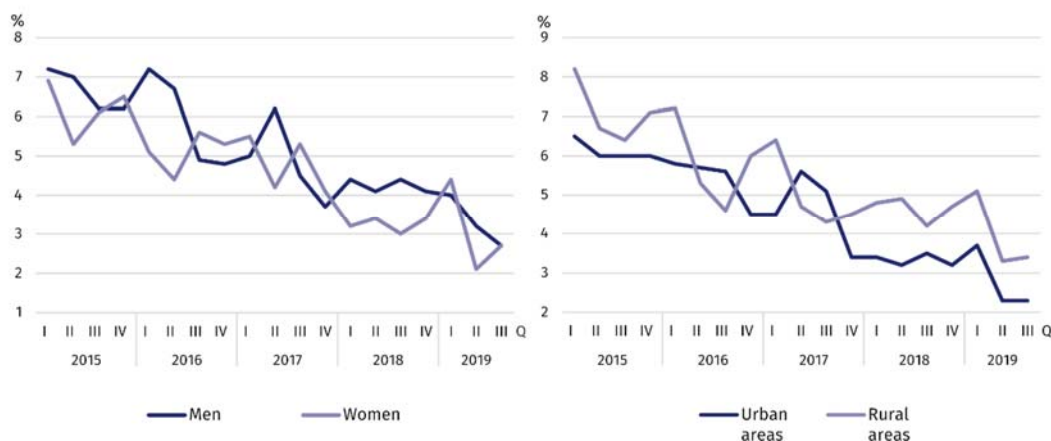
### Unemployed persons

In III quarter 2019, the population of unemployed persons in Mazowieckie Voivodship amounted to 71 thousand persons and increased by 2.9% compared to II quarter 2019.

Compared to the previous quarter, the number of unemployed women increased (by 32.0%) and the number of men decreased (by 13.6%). There was an increase both among urban and rural population (by 3.3% and 2.6% respectively).

Decrease in the number of unemployed women by 32%, and men by 14%

**Chart 8. Unemployment rate by sex and place of residence**



The total unemployment rate in the voivodship amounted to 2.7% and did not change compared to II quarter 2019. In urban areas it was 2.3%, i.e. by 1.1 pp lower than in rural areas. For working age population the unemployment rate was 2.8%.

In comparison with II quarter 2019, the unemployment rate increased among women (by 0.6 pp) and decreased among men (by 0.5 pp). The increase in the unemployment rate was recorded in rural areas (by 0.1 pp), and no changes were recorded in urban areas.

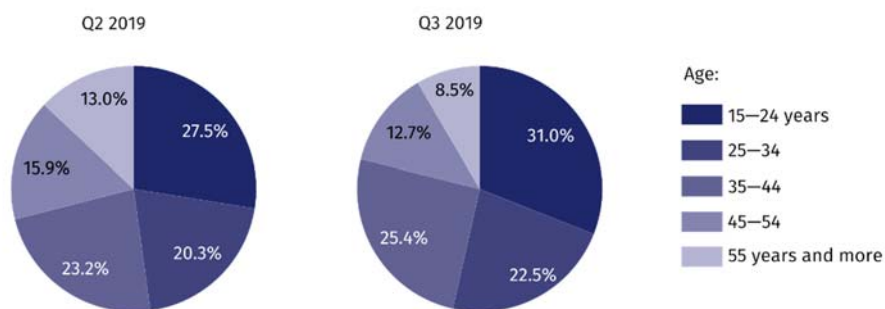
The lowest unemployment rate was noted among persons with higher education (1.6%), and the highest among persons with lower secondary and less education (9.3%).

The highest decrease was noted among persons with lower secondary and less education (by 0.8 pp), and the increase among persons with basic vocational education (by 0.2 pp).

The lowest unemployment rate was among persons aged 55 and more (1.3%), and the highest among persons aged 15–24 years (12.8%).

The largest decrease in the unemployment rate was noted among persons aged 55 and more (by 0.6 pp), and the largest increase among persons aged 15–24 (by 1.7 pp).

**Chart 9. Structure of unemployed persons by age**



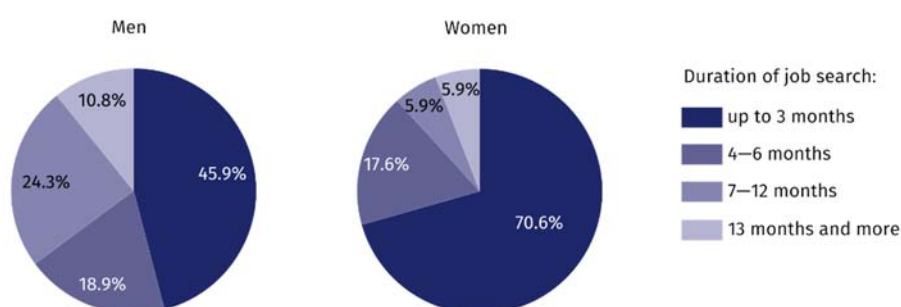
An average time of job seeking by unemployed persons amounted to 8.0 months. Women and rural residents looked for a job shorter than men and urban residents. Women looked for a job for 7.4 months on average (by 1.1 months shorter than men), and rural residents for 5.9 months (by 4.6 months shorter than urban residents).

The population of long-term unemployed persons (13 months and more) amounted to 7.0 thousand, which represented 9.9% of the total unemployed. Long-term unemployment was more frequent among men than women (10.5% compared to 6.1%) and more frequent among urban than among rural residents (15.0% compared to 3.2%).

Women and rural residents looked for a job shorter than men and urban residents

Long-term unemployment was more frequent among men than among women

**Chart 10. Structure of unemployed persons by duration of job seeking in III quarter 2019**

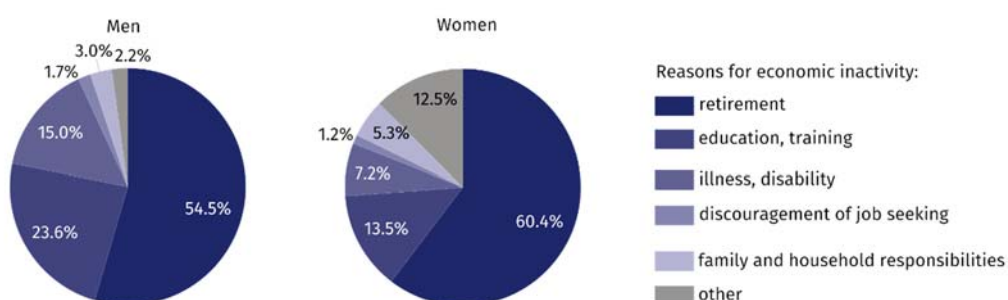


### Economically inactive persons

In III quarter 2019, in Mazowieckie Voivodship, 1725 thousand persons remained economically inactive, which accounted for 39.7% of total population aged 15 and more (in rural areas – 41.9%, in urban areas – 38.5%). Still, in this population women were the majority – 62.9%. Among economically inactive persons, as in previous periods, persons with lower secondary and less education predominated – 30.89%. Working age population made up 32.7% of total economically inactive persons.

Among the economically inactive women predominate – 63%

**Chart 11. Structure of economically inactive men and women by causes of economic inactivity in III quarter of 2019**



In relation to II quarter 2019, the population of economically inactive persons decreased by 1.3% (in female population by 0.6%, and in male population by 2.4%). Taking into account a place of residence, a decrease in the number of economically inactive persons was noted among urban residents (by 2.7%), and among rural residents an increase (by 1.1%).

Out of total economically inactive persons, 58.2% accounted for persons who did not take up work because of being retired. Other reasons for economic inactivity were: education and training – 17.2%, illness or disability – 10.1%, family and household responsibilities – 4.4%. The population of persons discouraged by inefficiency of job seeking amounted to 24 thousand, i.e. 1.4% of total economically inactive persons.

**Table 1. Economic activity of population aged 15 years and more by selected indicators**

SPECIFICATION	Q2 2019	Q3 2019	
	in %	increase/decrease in pp compared to the previous period	
<b>ECONOMIC ACTIVITY RATE</b>			
<b>TOTAL</b>	<b>59,8</b>	<b>60,3</b>	<b>0,5</b>
men	68,0	68,8	0,8
women	52,4	52,8	0,4
Urban areas	60,4	61,5	1,1
Rural areas	58,6	58,1	-0,5
<b>EMPLOYMENT RATE</b>			
<b>TOTAL</b>	<b>58,2</b>	<b>58,7</b>	<b>0,5</b>
men	65,8	66,9	1,1
women	51,4	51,3	-0,1
Urban areas	59,0	60,1	1,1
Rural areas	56,7	56,2	-0,5
<b>UNEMPLOYMENT RATE</b>			
<b>TOTAL</b>	<b>2,7</b>	<b>2,7</b>	<b>-</b>
men	3,2	2,7	-0,5
women	2,1	2,7	0,6
Urban areas	2,3	2,3	-
Rural areas	3,3	3,4	0,1

**Table 2. Economic activity of population aged 15 years by labour market status**

SPECIFICATION	Q2 2019	Q3 2019	
	in thousands		Q2=100
<b>EMPLOYED PERSONS</b>			
<b>TOTAL</b>	<b>2 526</b>	<b>2 549</b>	<b>100,9</b>
men	1 347	1 370	101,7
women	1 179	1 179	100,0
Urban areas	1 643	1 674	101,9
Rural areas	884	876	99,1
<b>UNEMPLOYED PERSONS</b>			
<b>TOTAL</b>	<b>69</b>	<b>71</b>	<b>102,9</b>
men	44	38	86,4
women	25	33	132,0
Urban areas	39	40	102,6
Rural areas	30	31	103,3
<b>ECONOMICALLY INACTIVE PERSONS</b>			
<b>TOTAL</b>	<b>1 748</b>	<b>1 725</b>	<b>98,7</b>
men	656	640	97,6
women	1 092	1 085	99,4
Urban areas	1 102	1 072	97,3
Rural areas	646	653	101,1

**Table 3. Employment rate and unemployment rate by age**

SPECIFICATION	Q2 2019	Q3 2019	
	in %		increase/decrease in pp compared to the previous period
<b>EMPLOYMENT RATE</b>			
<b>TOTAL</b>	<b>58,2</b>	<b>58,7</b>	<b>0,5</b>
15–24 years	31,1	30,9	–0,2
25–34	84,6	83,6	–1,0
35–44	86,8	87,4	0,6
45–54	85,6	86,4	0,8
55 years and more	28,2	29,3	1,1

**Table 3. Employment rate and unemployment rate by age (cont.)**

SPECIFICATION	Q2 2019	Q3 2019	
	in %		increase/decrease in pp compared to the previous period
<b>UNEMPLOYMENT RATE</b>			
<b>TOTAL</b>	<b>2,7</b>	<b>2,7</b>	<b>-</b>
15-24 years	11,1	12,8	1,7
25-34	2,2	2,6	0,4
35-44	2,1	2,3	0,2
45-54	2,0	1,6	-0,4
55 years and more	1,9	1,3	-0,6

**Table 4. Employment rate and unemployment rate by level of education**

SPECIFICATION	Q2 2019	Q3 2019	
	in %		increase/decrease in pp compared to the previous period
<b>EMPLOYMENT RATE</b>			
<b>TOTAL</b>	<b>58,2</b>	<b>58,7</b>	<b>0,5</b>
Higher	79,6	80,1	0,5
Post-secondary and vocational secondary	60,3	59,2	-1,1
General secondary	50,7	52,8	2,1
Basic vocational	55,1	55,3	0,2
Lower secondary, primary and incomplete primary	16,2	16,5	0,3
<b>UNEMPLOYMENT RATE</b>			
<b>TOTAL</b>	<b>2,7</b>	<b>2,7</b>	<b>-</b>
Higher	1,5	1,6	0,1
Post-secondary and vocational secondary	2,6	2,7	0,1
General secondary	4,5	4,2	-0,3
Basic vocational	2,8	3,0	0,2
Lower secondary, primary and incomplete primary	10,1	9,3	-0,8

Note. The sums of certain data may be different from the "total" item. This is due to rounding made when generalizing the results of the survey.



Prepared by:

**Mazovian Centre for Regional Surveys**  
**Statistical Office in Warszawa**  
**Aneta Czyżkowska**  
Tel: +48 22 464 20 30  
e-mail: [a.czyzkowska@stat.gov.pl](mailto:a.czyzkowska@stat.gov.pl)

Issued by:

**Statistical Information Centre**  
**Marcin Kałuski**  
Tel: +48 22 464 20 91  
e-mail: [m.kaluski@stat.gov.pl](mailto:m.kaluski@stat.gov.pl)

#### Press office

Tel: +48 22 464 20 91

e-mail: [m.kaluski@stat.gov.pl](mailto:m.kaluski@stat.gov.pl)



[warszawa.stat.gov.pl/en](http://warszawa.stat.gov.pl/en)



@Warszawa\_STAT

#### Related information

[Methodological report. Labour Force Survey](#)

[Labour force survey in Poland II quarter 2019](#)

[Monitoring of the labour market](#)

#### Data available in databases

[Local Data Bank/Labour market](#)

#### Terms used in official statistics

[Activity rate](#)

[Employment rate](#)

[Unemployment rate](#)

