

# Economic activity of population in Mazowieckie Voivodship II quarter 2019

30th September 2019

**58.2%**

Employment rate

In comparison with I quarter 2019, the number of employed persons increased while the number of the unemployed decreased which had an impact on the increase in the employment rate and the decrease in unemployment rate. The number of economically inactive persons increased.

Employment rate increased by 0.5 pp compared to the previous quarter

## Economic activity of population aged 15 and more

In the II quarter of 2019, among the total population of Mazowieckie Voivodship aged 15 and more, 58.2% represented employed persons, 1.6% – unemployed persons, and 40.2 – economically inactive persons. This means that less than half of the population aged 15 and more (41.8%) did not work. In urban and rural areas this structure looked similar. However, significant differences were visible in the structure of men and women. Without employment (economically inactive and unemployed) were 34.1% of men and 48.7% of women.

Chart 1. Structure of population aged 15 and more by sex in II quarter 2019

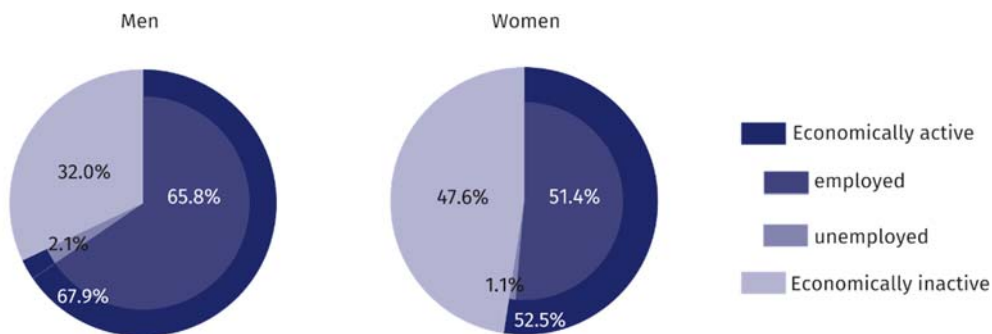
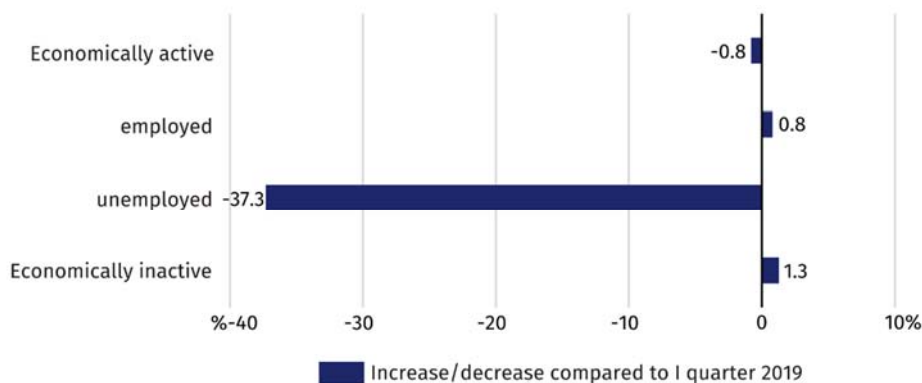


Chart 2. Changes compared to I quarter 2019

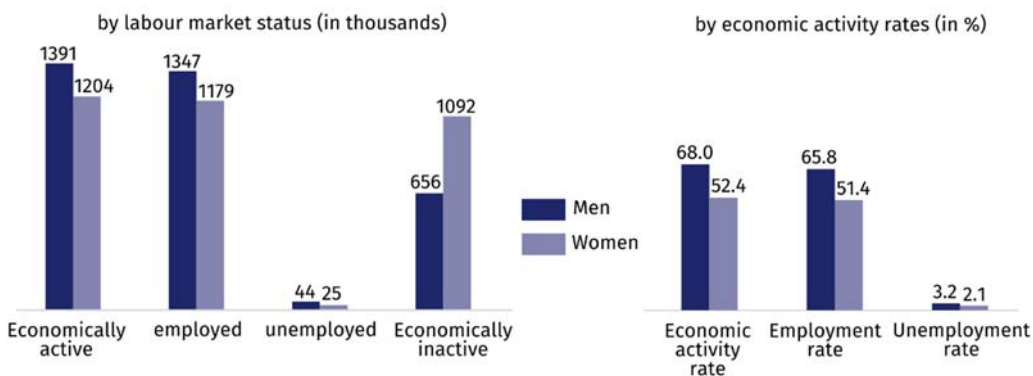


Decrease in unemployed persons by 37% compared to the previous quarter

In comparison with I quarter 2019, the number of economically active and unemployed persons decreased by 0.8% and 37.3%, respectively. There was an increase in the number of employed (by 0.8%) and economically inactive persons (by 1.3%). There was a decrease in the ratio of non-working population to working population. In II quarter 2019, there were 719 unemployed and economically inactive persons per 1000 employed persons, while in I quarter 2019 – 733.

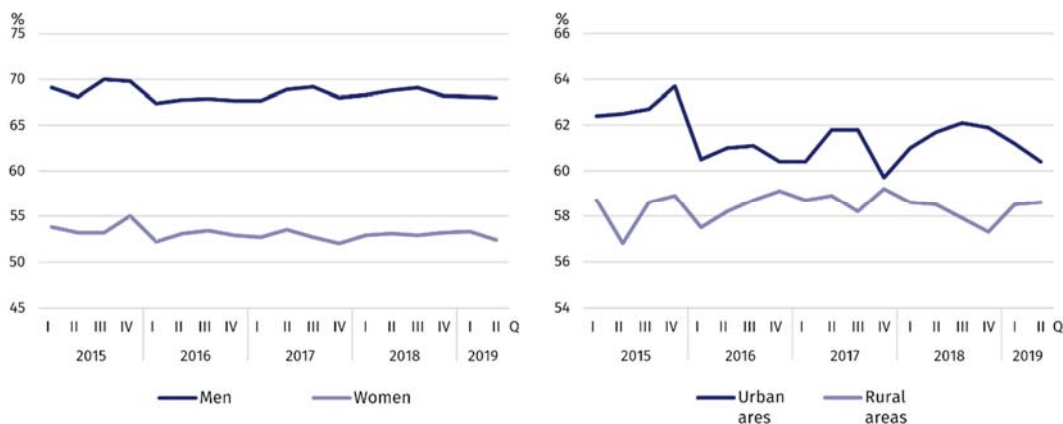
There were 719 unemployed and economically inactive persons per 1000 employed persons

**Chart 3. Economic activity of population in II quarter 2019**



The economic activity rate was 59.8% and decreased compared to the previous quarter by 0.4 pp. There was a drop in the level of economic activity both in the female (by 0.9 pp) and in male population (by 0.1 pp). This rate decreased also in urban areas (by 0.8 pp), whereas it increased in rural areas (by 0.1 pp).

**Chart 4. Economic activity rate by sex and place of residence**



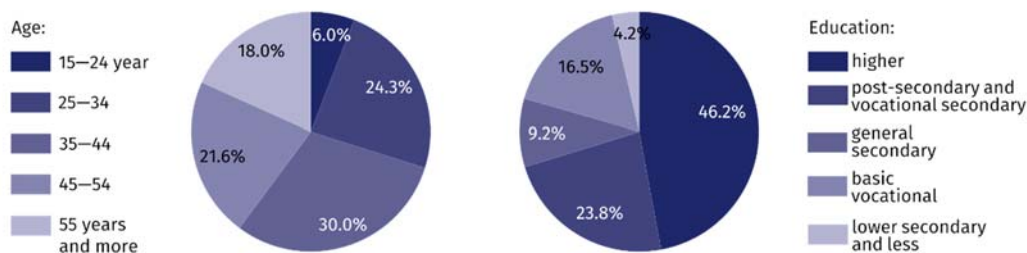
The highest value of the rate in terms of age was recorded in the age group 35–44, which was 88.7%, and the lowest among people aged 55 and more – 28.7%. For working age population, the rate was 81.0%.

### Employed persons

In II quarter 2019, in Mazowieckie Voivodship, the population of employed persons counted 2526 thousand persons, and employment rate was estimated at 58.2%.

In comparison with I quarter 2019, the number of employed persons increased by 0.8%. An increase was recorded both in female (by 0.9%) and in male population (by 0.7%). The number of employed persons increased among rural residents (by 2.1%), as well as among urban residents (by 0.2%).

**Chart 5. Structure of employed persons by age and education in II quarter 2019**



In II quarter 2019, the highest employment rate was recorded among persons aged 35–44 (86.8%), and the lowest among persons aged 55 and more (28.2%).

The highest increase in the employment rate was noted among persons aged 25–34 (by 2.9 pp), and the decrease among persons aged 35–44 (by 0.5 pp).

For working age population, the employment rate was estimated at 78.8% (increase by 1.2 pp compared to I quarter 2019).

Among employed persons according to the level of education, the highest employment rate recorded persons with higher education – 79.6%, and the lowest among persons with lower secondary and less education – 16.2%.

The largest increase in the employment rate recorded persons with lower secondary and less education (by 1.9 pp).

**Chart 6. Employment rate by sex and place of residence**

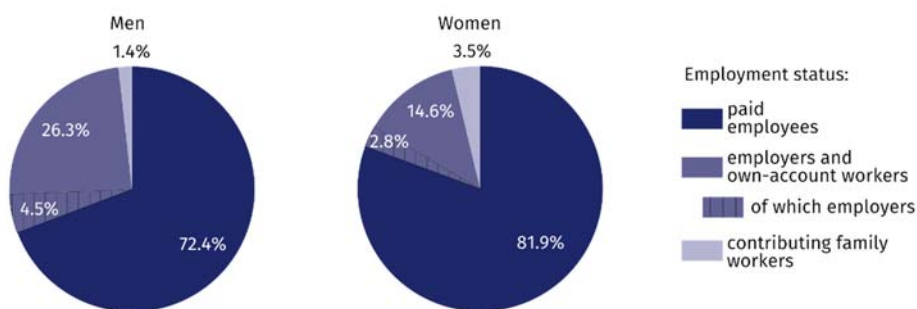


In II quarter 2019, 1941 thousand persons worked as paid employees (i.e. 76,8% of the total employed), and their number did not changed compared to I quarter of 2019. The increase was recorded among employers and own account workers (from 510 thousand to 525 thousand), as well as among contributing family workers (from 55 thousand to 60 thousand).

The vast majority of employed persons supported the private sector (75.8% of the total employed). Of these, the majority (57.5%) were men. The situation was different among paid employees in public sector, where among 611 thousand employed persons predominated women (59.6%). 77.6% of paid employees worked for an indefinite period, by 0.1 pp less than in I quarter 2019.

76% of total employed persons worked in private sector

**Chart 7. Structure of employed persons by employment status in II quarter 2019**



26% of men and 15% of women worked as employers and own-account workers

### Unemployed persons

In II quarter 2019, the population of unemployed persons in Mazowieckie Voivodship amounted to 69 thousand persons and decreased by 37.3% compared to I quarter 2019.

Compared to the previous quarter, both the number of unemployed women (by 53.7%) and the number of men decreased (by 21.4%). There was also a decrease among urban and rural population (by 38.1% and 36.2% respectively).

Decrease in the number of unemployed women by 54%, and men by 21%

**Chart 8. Unemployment rate by sex and place of residence**



The total unemployment rate in the voivodship amounted to 2.7% and decreased by 1.5 pp. In urban areas it was 2.3%, i.e. by 1.0 pp lower than in rural areas. For working age population the unemployment rate was 2.7%.

In comparison with I quarter 2019, the unemployment rate decreased both among women (by 2.3 pp) and among men (by 0.8 pp). The decrease in the unemployment rate was recorded both in rural (by 1.8 pp), and in urban areas (by 1.4 pp).

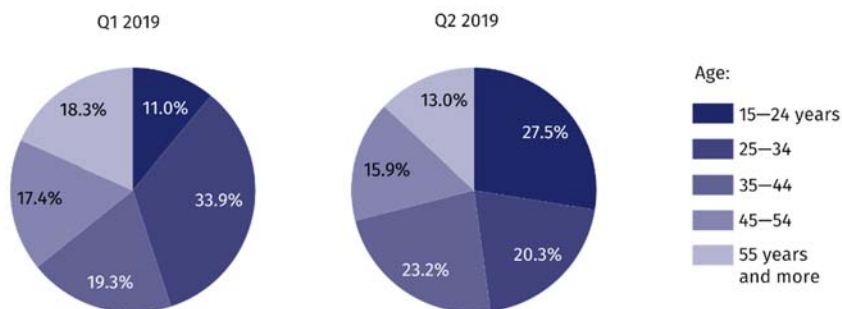
The lowest unemployment rate was noted among persons with higher education (1.5%), and the highest among persons with lower secondary and less education (10.1%).

The highest decrease was noted among persons with basic vocational education (by 2.8 pp), and the increase among persons with lower secondary and less education (by 0.3 pp).

The lowest unemployment rate was among persons aged 55 years and more (1.9% both), and the highest among persons aged 15–24 years (11.1%).

The largest decrease in the unemployment rate was noted in the group of persons aged 25–34 years (by 3.6 pp), and the increase only among persons aged 15–24 years (by 3.6 pp).

**Chart 9. Structure of unemployed persons by age**



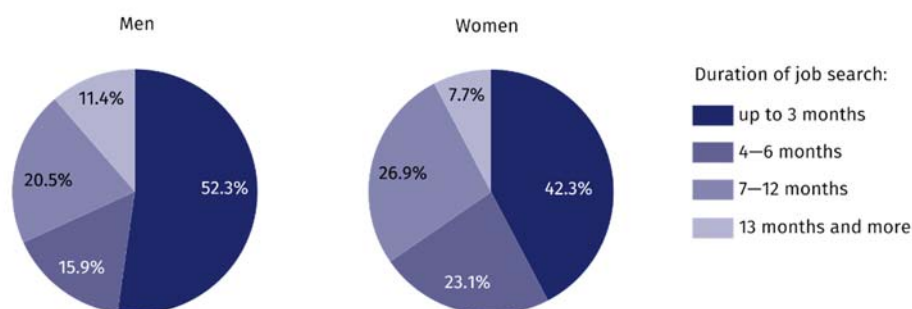
An average time of job seeking by unemployed persons amounted to 7.3 months. Men and rural residents looked for a job shorter than women and urban residents. Women looked for a job for 6.9 months on average (by 1.2 months shorter than men), and rural residents for 6.4 months (by 1.8 months shorter than urban residents).

The population of long-term unemployed persons (13 months and more) amounted to 7.0 thousand, which represented 10.1% of the total unemployed. Long-term unemployment was more frequent among men than women (11.4% compared to 8.0%) and more frequent among urban than among rural residents (15.4% compared to 3.3%).

Men and rural residents looked for a job shorter than men and urban residents

Long-term unemployment was more frequent among men than among women

**Chart 10. Structure of unemployed persons by duration of job seeking in II quarter 2019**

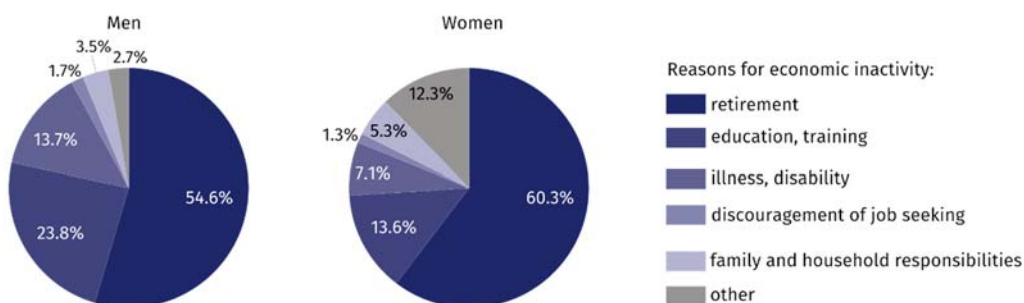


**Economically inactive persons**

In II quarter 2019, in Mazowieckie Voivodship, 1748 thousand persons remained economically inactive, which accounted for 40.2% of total population aged 15 and more (in rural areas – 41.4%, in urban areas – 39.6%). Still, in this population women were the majority – 62.5%. Among economically inactive persons, as in previous periods, persons with lower secondary and less education predominated – 30.9%. Working age population made up 33.2% of total economically inactive persons.

Among the economically inactive women predominate – 62%

**Chart 11. Structure of economically inactive men and women by causes of economic inactivity in II quarter of 2019**



In relation to I quarter 2019, the population of economically inactive persons increased by 1.3% (in female population by 1.8%, and in male population by 0.3%). Taking into account a place of residence, an increase in the number of economically inactive persons was noted among urban residents (by 2.0%), and among rural residents a decrease (by 0.2%).

Out of total economically inactive persons, 58.2% accounted for persons who did not take up work because of being retired. Other reasons for economic inactivity were: education and training – 17.4%, illness or disability – 9.6%, family and household responsibilities – 4.6%. The population of persons discouraged by inefficiency of job seeking amounted to 25 thousand, i.e. 1.4% of total economically inactive persons.

**Table 1. Economic activity of population aged 15 years and more by selected indicators**

SPECIFICATION	Q1 2019	Q2 2019	
	in %	increase/decrease in pp compared to the previous period	
<b>ECONOMIC ACTIVITY RATE</b>			
<b>TOTAL</b>	<b>60.2</b>	<b>59.8</b>	<b>-0.4</b>
men	68.1	68.0	-0.1
women	53.3	52.4	-0.9
Urban areas	61.2	60.4	-0.8
Rural areas	58.5	58.6	0.1
<b>EMPLOYMENT RATE</b>			
<b>TOTAL</b>	<b>57.7</b>	<b>58.2</b>	<b>0.5</b>
men	65.3	65.8	0.5
women	50.9	51.4	0.5
Urban areas	59.0	59.0	-
Rural areas	55.5	56.7	1.2
<b>UNEMPLOYMENT RATE</b>			
<b>TOTAL</b>	<b>4.2</b>	<b>2.7</b>	<b>-1.5</b>
men	4.0	3.2	-0.8
women	4.4	2.1	-2.3
Urban areas	3.7	2.3	-1.4
Rural areas	5.1	3.3	-1.8

**Table 2. Economic activity of population aged 15 years by labour market status**

SPECIFICATION	Q1 2019	Q2 2019	
	in thousands		Q1=100
<b>EMPLOYED PERSONS</b>			
<b>TOTAL</b>	<b>2 506</b>	<b>2 526</b>	<b>100.8</b>
men	1 337	1 347	100.7
women	1 169	1 179	100.9
Urban areas	1 640	1 643	100.2
Rural areas	866	884	102.1
<b>UNEMPLOYED PERSONS</b>			
<b>TOTAL</b>	<b>110</b>	<b>69</b>	<b>62.7</b>
men	56	44	78.6
women	54	25	46.3
Urban areas	63	39	61.9
Rural areas	47	30	63.8
<b>ECONOMICALLY INACTIVE PERSONS</b>			
<b>TOTAL</b>	<b>1 726</b>	<b>1 748</b>	<b>101.3</b>
men	654	656	100.3
women	1 073	1 092	101.8
Urban areas	1 080	1 102	102.0
Rural areas	647	646	99.8

**Table 3. Employment rate and unemployment rate by age**

SPECIFICATION	Q1 2019	Q2 2019	
	in %		increase/decrease in pp compared to previous period
<b>EMPLOYMENT RATE</b>			
<b>TOTAL</b>	<b>57.7</b>	<b>58.2</b>	<b>0.5</b>
15–24 years	30.2	31.1	0.9
25–34	81.7	84.6	2.9
35–44	87.3	86.8	–0.5
45–54	85.4	85.6	0.2
55 years and more	28.4	28.2	–0.2

**Table 3. Employment rate and unemployment rate by age (cont.)**

SPECIFICATION	Q1 2019	Q2 2019	
	in %		increase/decrease in pp compared to previous period
<b>UNEMPLOYMENT RATE</b>			
<b>TOTAL</b>	<b>4.2</b>	<b>2.7</b>	<b>-1.5</b>
15-24 years	7.5	11.1	3.6
25-34	5.8	2.2	-3.6
35-44	2.7	2.1	-0.6
45-54	3.4	2.0	-1.4
55 years and more	4.2	1.9	-2.3

**Table 4. Employment rate and unemployment rate by level of education**

SPECIFICATION	Q1 2019	Q2 2019	
	in %		increase/decrease in pp compared to previous period
<b>EMPLOYMENT RATE</b>			
<b>TOTAL</b>	<b>57.7</b>	<b>58.2</b>	<b>0.5</b>
Higher	79.2	79.6	0.4
Post-secondary and vocational secondary	59.2	60.3	1.1
General secondary	50.7	50.7	-
Basic vocational	54.5	55.1	0.6
Lower secondary, primary and incomplete primary	14.3	16.2	1.9
<b>UNEMPLOYMENT RATE</b>			
<b>TOTAL</b>	<b>4,2</b>	<b>2,7</b>	<b>-1,5</b>
Higher	2,3	1,5	-0,8
Post-secondary and vocational secondary	4,8	2,6	-2,2
General secondary	7,2	4,5	-2,7
Basic vocational	5,6	2,8	-2,8
Lower secondary, primary and incomplete primary	9,8	10,1	0,3

Note. The sums of certain data may be different from the "total" item. This is due to rounding made when generalizing the results of the survey.



Prepared by:

**Mazovian Centre for Regional Surveys**  
**Statistical Office in Warszawa**  
**Aneta Czyżkowska**  
Tel: + 48 22 464 20 30  
e-mail: [a.czyzkowska@stat.gov.pl](mailto:a.czyzkowska@stat.gov.pl)

Issued by:

**Statistical Information Centre**  
**Marcin Kałuski**  
Tel: + 48 22 464 20 91  
e-mail: [m.kaluski@stat.gov.pl](mailto:m.kaluski@stat.gov.pl)

Translated by:

**Agnieszka Gromek-Żukowska**  
Tel: +48 22 464 22 42  
e-mail: [a.gromek-zukowska@stat.gov.pl](mailto:a.gromek-zukowska@stat.gov.pl)

#### Press office

Tel: + 48 22 464 20 91

e-mail: [m.kaluski@stat.gov.pl](mailto:m.kaluski@stat.gov.pl)



[warszawa.stat.gov.pl/en](http://warszawa.stat.gov.pl/en)



[@Warszawa\\_STAT](https://twitter.com/Warszawa_STAT)

#### Related information

[Methodological report. Labour Force Survey](#)

[Labour force survey in Poland IV quarter 2018](#)

[Monitoring of the labour market](#)

#### Data available in databases

[Local Data Bank/Labour market](#)

#### Terms used in official statistics

[Activity rate](#)

[Employment rate](#)

[Unemployment rate](#)

