

# Economic activity of population in Mazowieckie Voivodship I quarter 2019

28th June 2019

Employment rate decreased by 0.3 pp compared to the previous quarter

**57.7%**  
Employment rate

In comparison with IV quarter 2018, the number of economically active and employed persons decreased, which had an impact on the decrease in the economic activity rate and the employment rate. The number of unemployed and economically inactive persons increased.

## Economic activity of population aged 15 and more

In the I quarter of 2019, among the total population of Mazowieckie Voivodship aged 15 and more, 57.7% represented employed persons, 2.5% – unemployed persons, and 39.8 – economically inactive persons. This means that less than half of the population aged 15 and more (42.3%) did not work. In urban and rural areas this structure looked similar. However, significant differences were visible in the structure of men and women. Without employment (economically inactive and unemployed) were 34.6% of men and 49.2% of women.

Chart 1. Structure of population aged 15 and more by sex in I quarter 2019

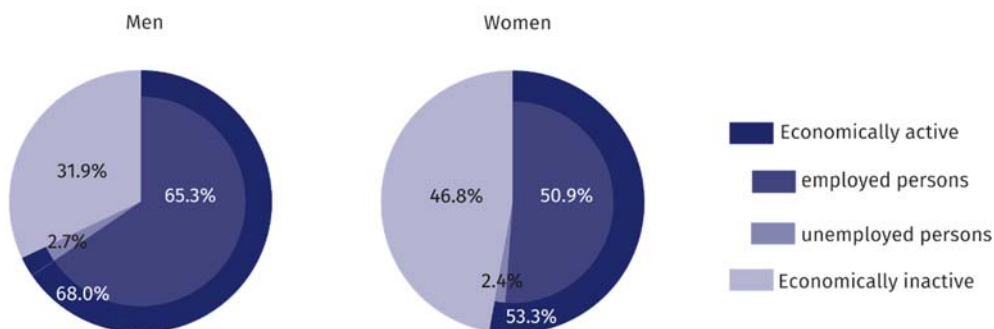
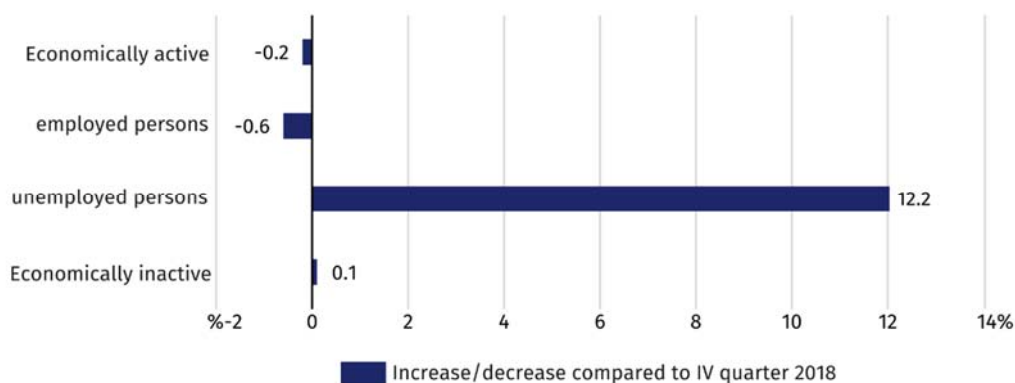


Chart 2. Changes compared to IV quarter 2018



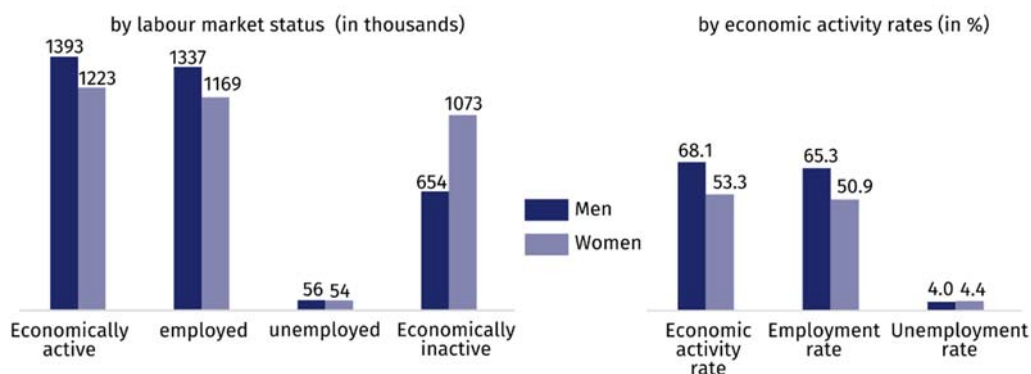
Increase in unemployed persons by 12.2% compared to the previous quarter

In comparison with IV quarter 2018, the number of economically active and employed persons decreased by 0.2% and 0.6%, respectively. There was an increase in the number of unemployed (by 12.2%) and economically inactive persons (by 0.1%). There was a decrease in the ratio of non-working population to working population.

In I quarter 2019, there were 733 unemployed and economically inactive persons per 1000 employed persons, while in IV quarter 2018 – 723.

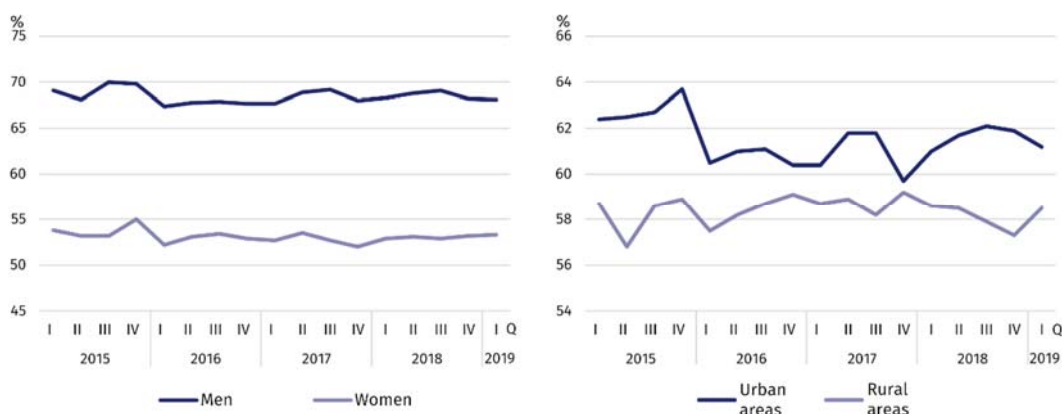
There were 733 unemployed persons per 1000 employed persons

**Chart 3. Economic activity of population in I quarter 2019**



The economic activity rate was 60.2% and decreased compared to the previous quarter by 0.1 pp. There was a drop in the level of economic activity in the male population (by 0.1 pp), and among women – an increase (by 0.1 pp). This rate decreased in urban areas (by 0.7 pp), and increased in rural areas (by 1.2 pp).

**Chart 4. Economic activity rate by sex and place of residence**



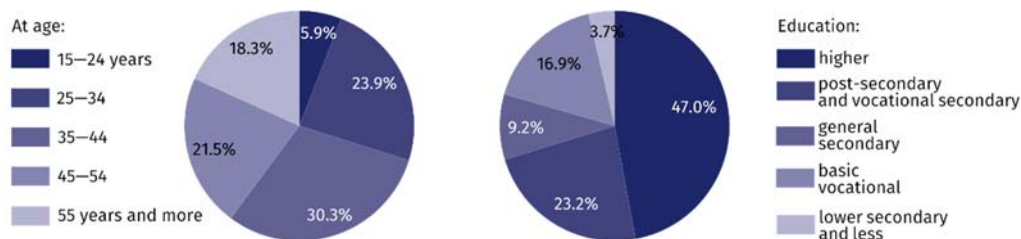
The highest value of the rate in terms of age was recorded in the age group 35–44, which was 89.7%, and the lowest among people aged 55 and more – 29.6%. For working age population, the rate was 81.2%.

### Employed persons

In I quarter 2018, in Mazowieckie Voivodship, the population of employed persons counted 2506 thousand persons, and employment rate was estimated at 57.7%.

In comparison with IV quarter 2018, the number of employed persons decreased by 0.6%. A decrease was recorded in female (by 1.2%) and in male population (by 0.2%). The number of employed persons decreased among urban residents (by 1.7%), and increased among rural residents (by 1.5%).

**Chart 5. Structure of employed persons by age and education in I quarter 2019**



In I quarter 2019, the highest employment rate was noted among persons aged 35–44 (87.3%), and the lowest among persons aged 55 and more (28.4%).

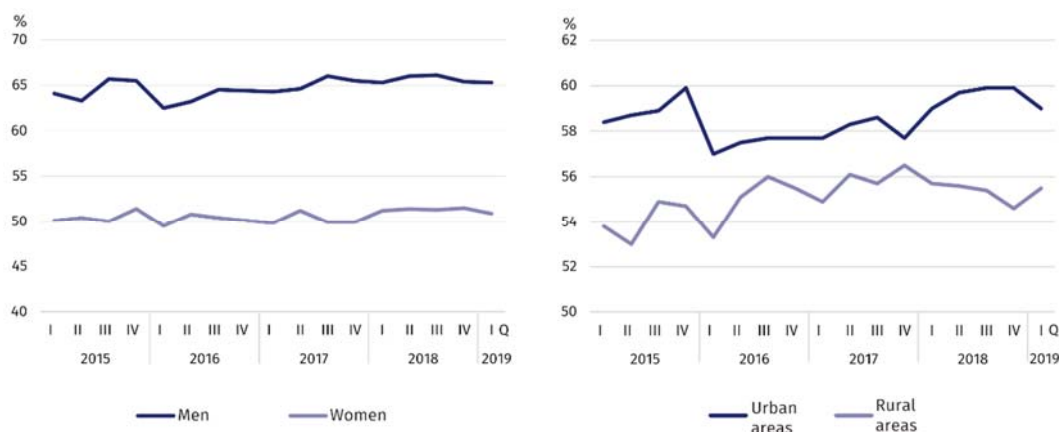
The highest increase in the employment rate was noted among persons aged 15–24 (by 3.8 pp), and the highest decrease among persons aged 35–44 (by 2.3 pp).

For working age population, the employment rate was estimated at 77.6% (unchanged compared to IV quarter 2018).

Among employed persons according to the level of educational, the highest employment rate recorded persons with higher education – 79.2%, and the lowest among persons with lower secondary and less education – 14.3%.

The largest increase in the employment rate recorded persons with post-secondary and vocational secondary education (by 0.2 pp). The largest decrease was noted among population with tertiary education (by 1.4 pp).

**Chart 6. Employment rate by sex and place of residence**

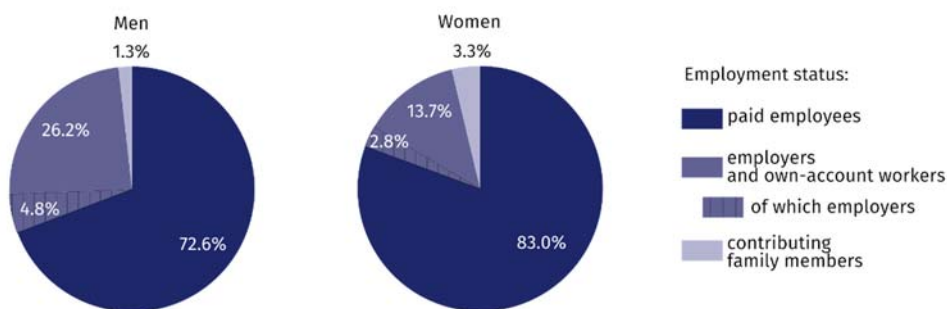


In I quarter 2019, 1941 thousand persons worked as paid employees (i.e. 77,5% of the total employed), and their number decreased by 0.4% compared to IV quarter of 2018. The decrease was among contributing family workers (from 74 thousand to 55 thousand), and an increase among employers and own account workers (from 500 thousand to 510 thousand).

The vast majority of employed persons supported the private sector (75.6% of the total employed). Of these, the majority (58.6%) were men. The situation was different among paid employees in public sector, where among 611 thousand employed persons predominated women (62.8%). 77.7% of paid employees worked for an indefinite period, by 1.4 pp more than in IV quarter 2018.

76% of total employed persons worked in private sector

**Chart 7. Structure of employed persons by employment status in I quarter 2019**

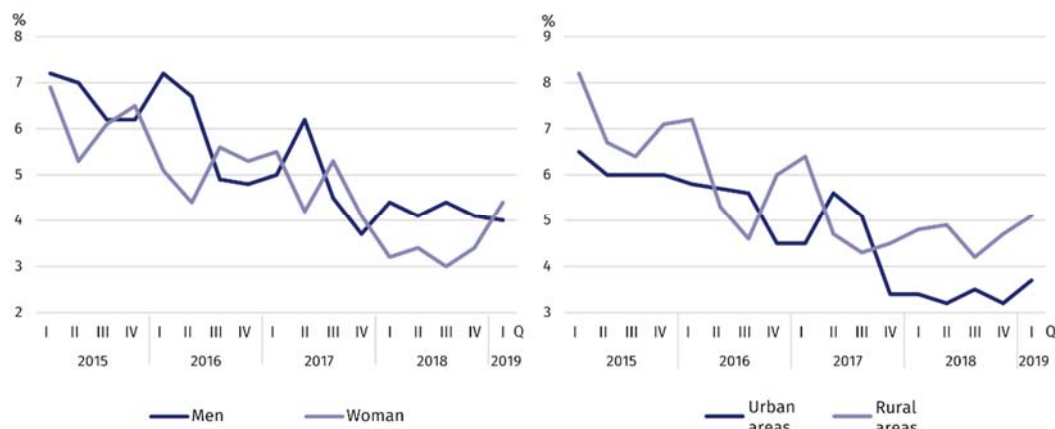


26% of men and 14% of women worked as employers and own-account workers

### Unemployed persons

In I quarter 2019, the population of unemployed persons in Mazowieckie Voivodship amounted to 110 thousand persons and increased by 12.2% compared to IV quarter 2018.

**Chart 8. Unemployment rate by sex and place of residence**



Compared to the previous quarter, the number of unemployed women increased (by 31.7%), and the number of men decreased (by 1.8%). The number of the unemployed increased both in urban and rural areas (by 12.5% and 11.9% respectively).

A decrease in the number of unemployed men by 2%, and an increase among women by 32%

The total unemployment rate in the voivodship amounted to 4.2% and increased by 0.5 pp. In urban areas it was 3.7%, i.e. by 0.5 pp lower than in rural areas. For working age population the unemployment rate was 4.3%.

In comparison with IV quarter 2018, the unemployment rate among women increased (by 1.0 pp), and decreased among men (by 0.1 pp). An increase in the unemployment rate was recorded both in urban (by 0.5 pp), and in rural areas (by 0.4 pp).

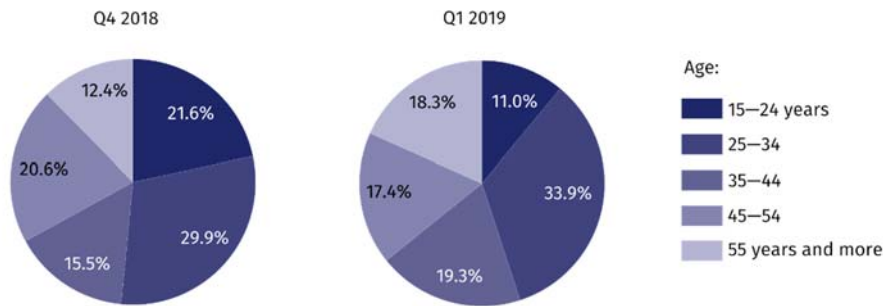
The lowest unemployment rate was noted among persons with higher education (2.3%), and the highest among persons with lower secondary and less education (9.8%).

The highest decrease in the unemployment rate was noted among persons with lower secondary and less education (by 0.5 pp), and the largest increase among persons with general secondary education (by 2.5 pp).

The lowest unemployment rate was among persons aged 35–44 years (2.7% both), and the highest among persons aged 15–24 years (7.5%).

The largest decrease in the unemployment rate was noted in the group of persons aged 15–24 years (by 6.4 pp), and the largest increase among persons aged 55 and more (by 1.7 pp).

**Chart 9. Structure of unemployed by age**



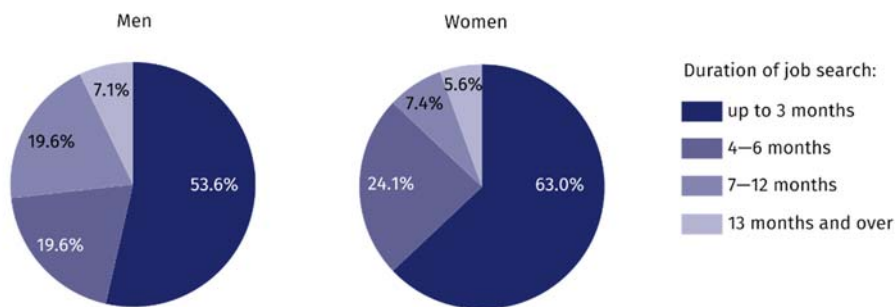
An average time of job seeking by unemployed persons amounted to 6.5 months. Women and rural residents looked for a job shorter than men and urban residents. Women looked for a job for 5.6 months on average (by 1.9 months shorter than men), and rural residents for 6.5 months (by 0.1 months shorter than urban residents).

The population of long-term unemployed persons (13 months and more) amounted to 7.0 thousand, which represented 6.4% of the total unemployed. Long-term unemployment was more frequent among men than among women (7.1% compared to 5.6%) and more frequent among rural than among urban residents (6.4% compared to 6.3%).

Women and rural residents looked for a job shorter than men and urban residents

Long-term unemployment was more frequent among men than among women

**Chart 10. Structure of unemployed persons by duration of job seeking in I quarter 2019**

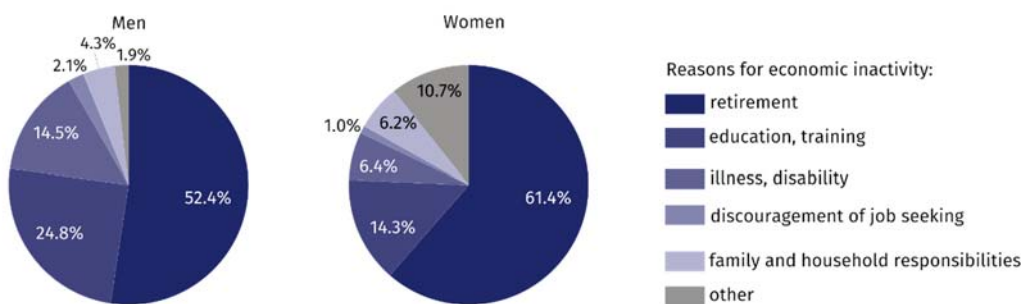


Among economically inactive persons women predominated – 62%

**Economically inactive persons**

In I quarter 2019, in Mazowieckie Voivodship, 1726 thousand persons remained economically inactive, which accounted for 39.8% of total population aged 15 and more (in rural areas – 41.5%, in urban areas – 38.8%). Still, in this population women were the majority – 62.2%. Among economically inactive persons, as in previous periods, persons with lower secondary and less education predominated – 31.3%. Working age population made up 33.5% of total economically inactive persons.

**Chart 11. Structure of economically inactive men and women by causes of economic inactivity in I quarter of 2019**



In relation to IV quarter 2018, the population of economically inactive persons increased by 0.1% (male population by 0.3%, and female population did not change). Taking into account a place of residence, an increase in the number of economically inactive persons was noted among urban residents (by 1.9%), and among rural residents a decrease (by 2.9%).

Out of total economically inactive persons, 58.1% accounted for person who did not take up work because of being retired. Other reasons for economic inactivity were: education and training – 18.3%, illness or disability – 9.5%, family and household responsibilities – 5.4%. The population of persons discouraged by inefficiency of job seeking amounted to 25 thousand, i.e. 1.4% of total economically inactive persons.

**Table 1. Economic activity of population aged 15 and more by selected indicators**

SPECIFICATION	Q4 2018	Q1 2019	
	in %	increase/decrease in pp compared to the previous period	
<b>ECONOMIC ACTIVITY RATE</b>			
<b>TOTAL</b>	<b>60.3</b>	<b>60.2</b>	<b>-0.1</b>
men	68.2	68.1	-0.1
women	53.2	53.3	0.1
Urban areas	61.9	61.2	-0.7
Rural areas	57.3	58.5	1.2
<b>EMPLOYMENT RATE</b>			
<b>TOTAL</b>	<b>58.0</b>	<b>57.7</b>	<b>-0.3</b>
men	65.4	65.3	-0.1
women	51.5	50.9	-0.6
Urban areas	59.9	59.0	-0.9
Rural areas	54.6	55.5	0.9
<b>UNEMPLOYMENT RATE</b>			
<b>TOTAL</b>	<b>3.7</b>	<b>4.2</b>	<b>0.5</b>
men	4.1	4.0	-0.1
women	3.4	4.4	1.0
Urban areas	3.2	3.7	0.5
Rural areas	4.7	5.1	0.4

**Table 2. Economic activity of population aged 15 and more by status on the labour market**

SPECIFICATION	Q4 2018	Q1 2019	
	in thousands		Q4=100
<b>EMPLOYED PERSONS</b>			
<b>TOTAL</b>	<b>2 522</b>	<b>2 506</b>	<b>99.4</b>
men	1 340	1 337	99.8
women	1 183	1 169	98.8
Urban areas	1 669	1 640	98.3
Rural areas	853	866	101.5
<b>UNEMPLOYED PERSONS</b>			
<b>TOTAL</b>	<b>98</b>	<b>110</b>	<b>112.2</b>
men	57	56	98.2
women	41	54	131.7
Urban areas	56	63	112.5
Rural areas	42	47	111.9
<b>ECONOMICALLY INACTIVE PERSONS</b>			
<b>TOTAL</b>	<b>1 725</b>	<b>1 726</b>	<b>100.1</b>
men	652	654	100.3
women	1 073	1 073	100.0
Urban areas	1 060	1 080	101.9
Rural areas	666	647	97.1

**Table 3. Employment rate and unemployment rate by age**

SPECIFICATION	Q4 2018	Q1 2019	
	in %		increase/decrease in pp compared to the previous period
<b>EMPLOYMENT RATE</b>			
<b>TOTAL</b>	<b>58.0</b>	<b>57.7</b>	<b>-0.3</b>
15-24 years	26.4	30.2	3.8
25-34	82.5	81.7	-0.8
35-44	89.6	87.3	-2.3
45-54	84.7	85.4	0.7
55 years and more	29.1	28.4	-0.7

**Table 3. Employment rate and unemployment rate by age (cont.)**

SPECIFICATION	Q4 2018	Q1 2019	
	in %		increase/decrease in pp compared to the previous period
<b>UNEMPLOYMENT RATE</b>			
<b>TOTAL</b>	<b>3.7</b>	<b>4.2</b>	<b>0.5</b>
15–24 years	13.9	7.5	–6.4
25–34	4.5	5.8	1.3
35–44	1.9	2.7	0.8
45–54	3.6	3.4	–0.2
55 years and more	2.5	4.2	1.7

**Table 4. Employment rate and unemployment rate by level of education**

SPECIFICATION	Q4 2018	Q1 2019	
	in %		increase/decrease in pp compared to the previous period
<b>EMPLOYMENT RATE</b>			
<b>TOTAL</b>	<b>58.0</b>	<b>57.7</b>	<b>–0.3</b>
Higher	80.6	79.2	–1.4
Post-secondary and vocational secondary	59.0	59.2	0.2
General secondary	51.3	50.7	–0.6
Basic vocational	55.0	54.5	–0.5
Lower secondary, primary and incomplete primary	15.6	14.3	–1.3
<b>UNEMPLOYMENT RATE</b>			
<b>TOTAL</b>	<b>3.7</b>	<b>4.2</b>	<b>0.5</b>
Higher	1.7	2.3	0.6
Post-secondary and vocational secondary	4.5	4.8	0.3
General secondary	4.7	7.2	2.5
Basic vocational	5.8	5.6	–0.2
Lower secondary, primary and incomplete primary	10.3	9.8	–0.5

Note. The sums of certain data may be different from the "total" item. This is due to rounding made when generalizing the results of the survey.



Prepared by:

**Mazovian Centre for Regional Surveys**  
**Statistical Office in Warszawa**  
**Aneta Czyżkowska**  
Tel: +48 22 464 20 30  
e-mail: [a.czyzkowska@stat.gov.pl](mailto:a.czyzkowska@stat.gov.pl)

Issued by:

**Statistical Information Centre**  
**Marcin Kałuski**  
Tel: +48 22 464 20 91  
e-mail: [m.kaluski@stat.gov.pl](mailto:m.kaluski@stat.gov.pl)

Translated by:

**Agnieszka Gromek-Żukowska**  
Tel: +48 22 464 22 42  
e-mail: [a.gromek-zukowska@stat.gov.pl](mailto:a.gromek-zukowska@stat.gov.pl)

#### Press office

Tel: +48 22 464 20 91

e-mail: [m.kaluski@stat.gov.pl](mailto:m.kaluski@stat.gov.pl)



[warszawa.stat.gov.pl/en](http://warszawa.stat.gov.pl/en)



[@Warszawa\\_STAT](https://twitter.com/Warszawa_STAT)

#### Related information

[Methodological report. Labour Force Survey](#)

[Labour force survey in Poland](#)

[Monitoring of the labour market](#)

#### Data available in databases

[Local Data Bank/Labour market](#)

#### Terms used in official statistics

[Economic activity rate of population](#)

[Employment rate](#)

[Unemployment rate](#)

