

# Economic activity of population in Mazowieckie voivodship in IV quarter 2018

29.03.2019

**58.0%**

Employment rate

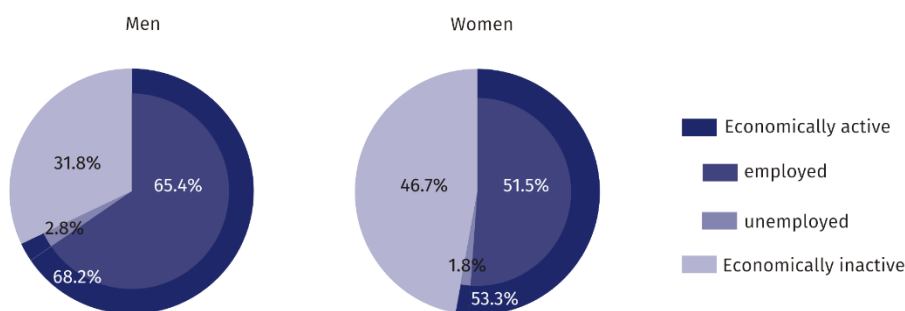
Compared to III quarter 2018, the number of economically active and employed persons decreased, which had an impact on the decline in the economic activity rate and employment rate. The number of unemployed persons did not change, and the number of economically inactive person increased.

Employment rate decreased by 0.3 pp compared to the previous quarter

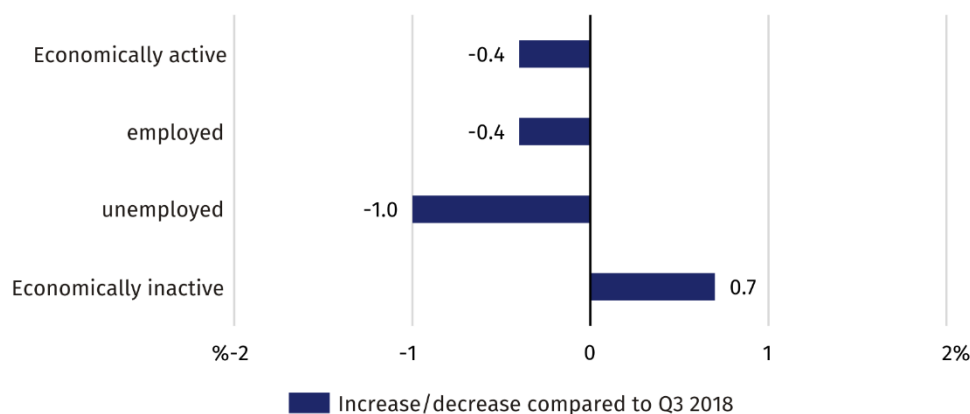
## Economic activity of population aged 15 and more

In IV quarter 2018, among total population of the Mazowieckie voivodship aged 15 and more, 58% were employed, 2.3% —unemployed, and 39.7% — economically inactive. This means that less than half of the population aged 15 and more (42%) did not work. In urban and rural areas this structure looked similar. However, clear differences are visible in the structure of men and women. There were 34.6% of men and 48.5% of women without work (economically inactive and unemployed).

**Chart 1. Structure of population aged 15 and more by sex in IV quarter 2018**



**Chart 2. Changes in IV quarter 2018**



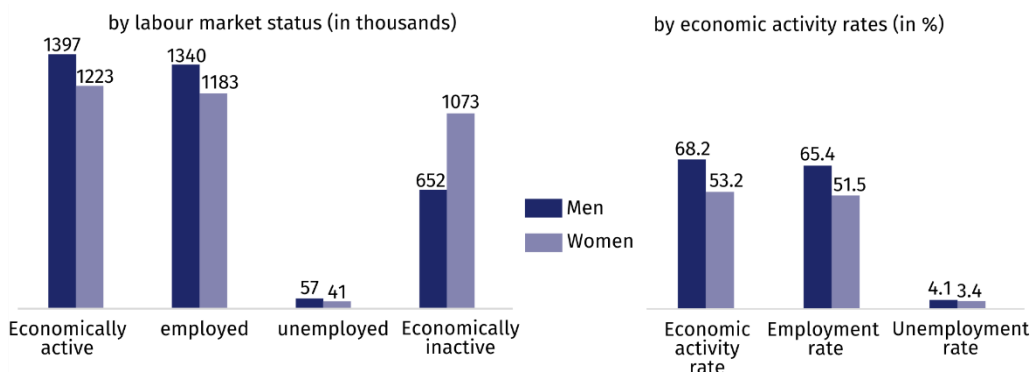
Increase in economically inactive persons by 0.7 pp as compared to the previous quarter

Compared to III quarter 2018, the number of economically active and employed persons decreased (by 0.4% each), the number of unemployed persons decreased (by 1.0%), and the number of economically inactive persons increased (by 0.7%). There was an increase in the

ratio of non-working age to working age population. In IV quarter 2018, there were 723 unemployed and economically inactive persons per 1000 working age population, while in III quarter – 716.

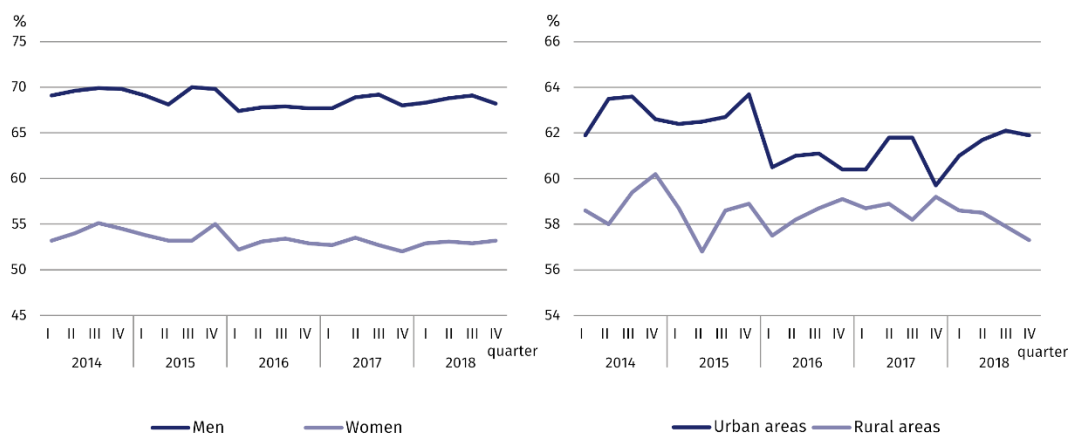
There were 723 unemployed and economically inactive persons per 1000 employed persons

**Chart 3. Economic activity of population in IV quarter 2018**



Economic activity rate amounted to 60.3% and decreased as compared with the previous quarter by 0.3 pp. A decrease in the level of economic activity was recorded among men (by 0.9 pp), and an increase among women (by 0.3 pp). In rural and urban areas a decrease was noted by 0.6 and 0.2 pp, respectively.

**Chart 4. Economic activity rate by sex and place of residence**



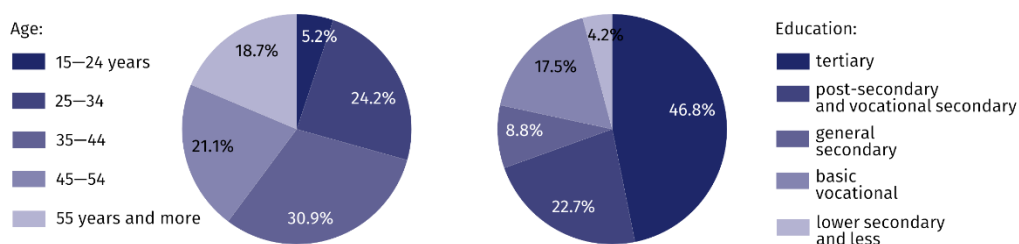
The highest value of this rate in terms of age was noted in the age group of 35–44, which was 91.4%, and the lowest among persons aged 55 and more – 29.9%. For working age population this rate reached 80.8%.

### Employed persons

In IV quarter 2018, in the Mazowieckie voivodship, the working age population was 2522 thousand persons, and employment rate was at the level of 58.0%.

In comparison with III quarter 2018, the number of employed persons decreased by 0.4%. A decrease was recorded among men (by 1.0%), and among women an increase (by 0.4%). The number of employed persons increased among urban residents (by 0.2%), while a decrease was noted among rural residents (by 1.4%).

**Chart 5. Structure of employed persons by age and education in IV quarter 2018**



In IV quarter 2018, the highest employment rate was recorded among persons aged 35–44 (89.6%), and the lowest among persons aged 15–24 (26.4%).

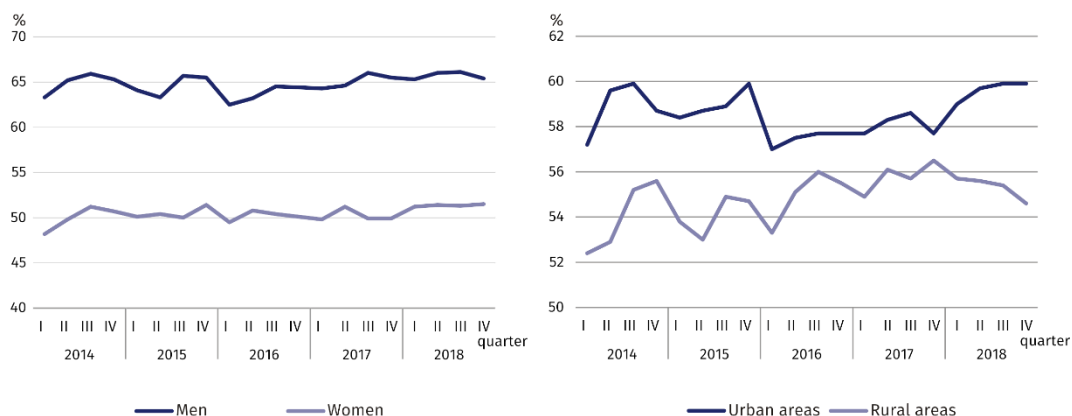
The highest increase in the employment rate was noted among persons aged 55 and more (by 0.9 pp), and a decrease among persons aged 15–24 (by 3.0 pp).

For working age population, the employment rate reached the level of 77.6% (a decrease by 0.8 pp as compared to III quarter 2018).

Among employed persons by education level, the highest employment rate was noted among persons with tertiary education – 80.6%, and the lowest among persons with lower secondary education and less – 15.6%.

The largest increase in employment rate was noted among persons with tertiary education (by 1.8 pp), and the largest decrease among persons with general secondary education (by 5.2 pp).

**Chart 6. Employment rate by sex and place of residence**

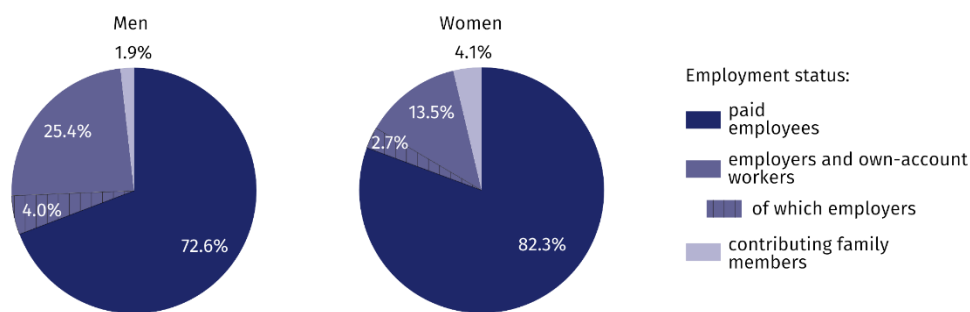


In IV quarter 2018, as paid employees worked 1948 thousand persons (i.e. 77.2% of the total employed), and their number decreased by 1.1% compared to III quarter 2018. The decrease was noted among contributing family workers (from 79 to 74 thousand), and an increase among employers and self-employed workers (from 483 to 500 thousand).

The vast majority of employed persons worked in private sector (76.4% of the total employed). Of these, the majority (58.2%) represented men. The situation of paid employees in public sector was different, in which out of 596 thousand employees women were dominant (63.4%). 76.3% of paid employees worked for indefinite period, by 0.5 pp less than in III quarter 2018.

76% of all employees are employed in the private sector

**Chart 7. Structure of employed persons by employment status in IV quarter 2018**

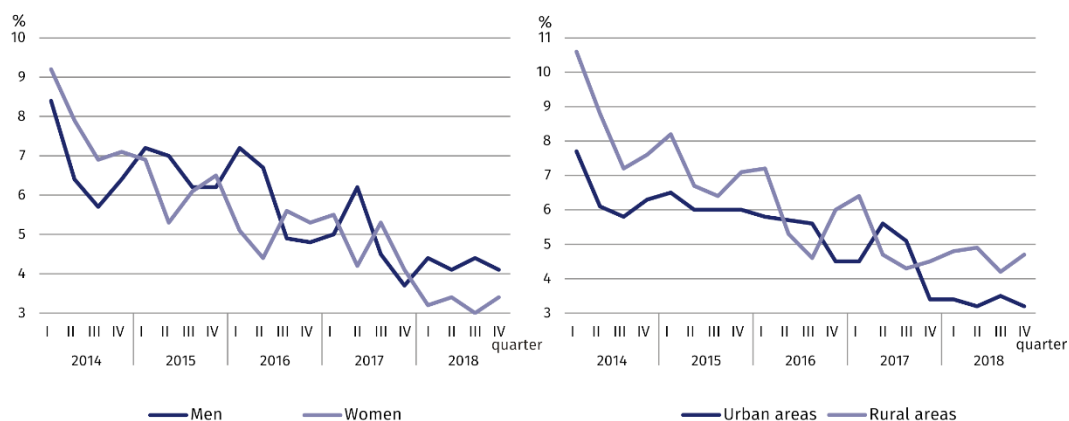


25% of men and 14% of women were employers and self-employed workers

## Unemployment

In IV quarter 2018, the population of unemployed persons in the Mazowieckie voivodship accounted for 98 thousand persons and decreased by 1.0% as compared to III quarter 2018.

**Chart 8. Unemployment rate by sex and place of residence**



As compared to the previous quarter, the number of unemployed men and urban residents decreased (by 8.1% and 8.2%, respectively), and unemployed women and rural residents it increased (by 13.9% and 10.5%, respectively).

The total unemployment rate in the voivodship amounted to 3.7%. In urban areas, it was 3.2%, i.e. by 1.5 pp lower than in rural areas. For working age population, the unemployment rate reached 3.9%.

In comparison with III quarter 2018, the unemployment rate among men and urban residents decreased (by 0.3 pp each), and among women and rural residents it increased (by 0.4 pp and 0.5 pp, respectively).

The lowest unemployment rate was among persons with tertiary education (1.7%), and the highest among persons with lower secondary and less education (10.3%).

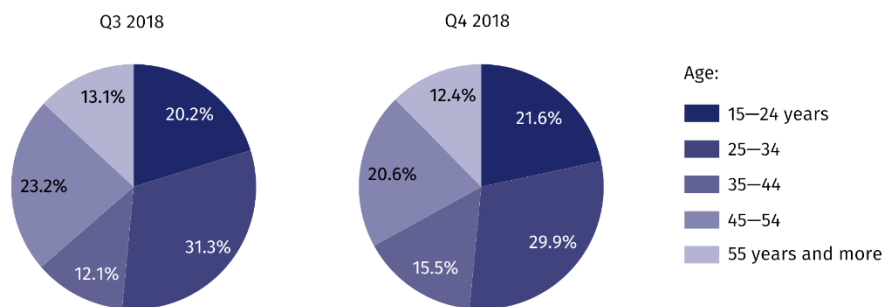
The largest decrease was recorded among persons with general secondary education (by 1.4 pp), and the highest increase among persons with lower secondary and less education (by 5.5 pp).

The lowest unemployment rate was recorded among persons aged 35–44 years (1.9%), and the highest among persons aged 15–24 (13.9%).

The largest drop in unemployment rate was among persons aged 45–54 years (by 0.5 pp), and the highest increase in the group of persons 15–24 years (by 1.9 pp).

Drop in the number of unemployed men by 8%, and among women by 14%

**Chart 9. Structure of unemployed persons by age**



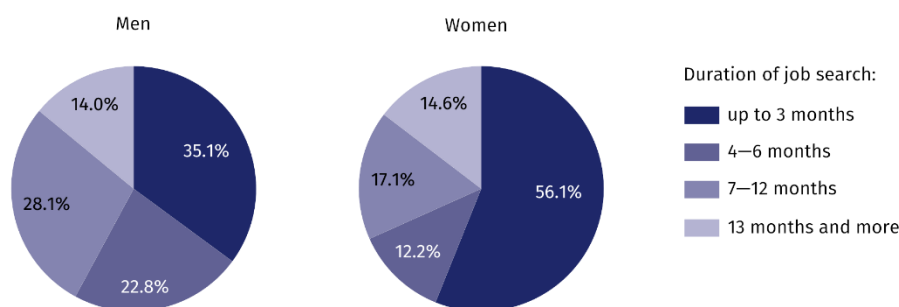
The average duration of job search by unemployed persons amounted to 8 months. Women and rural residents looked for work shorter than man and urban residents. Women looked for work for an average of 7.9 months (by 0.1 month shorter than men), and rural residents for 7.6 months (by 0.6 months shorter than urban residents).

The population of long-term unemployed persons (13 months and longer) amounted to 14 thousand, which accounted for 14.3% of the total unemployed. Long-term unemployment was more frequent among women than men (14.6% compared to 14.0%) and more frequent among urban than rural residents (16.1% compared to 11.9%).

Women and rural residents were looking for work shorter than men and urban residents

Long-term unemployment was more frequent among women than men

**Chart 10. Structure of unemployed persons by duration of job search in IV quarter 2018**

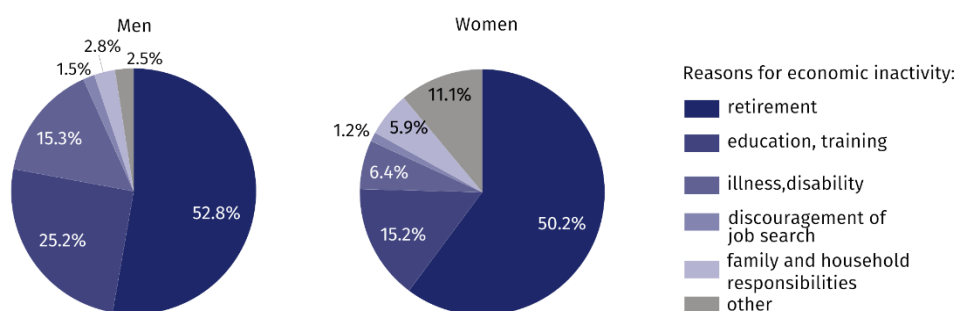


**Economically inactive persons**

In IV quarter 2018, in the Mazowieckie voivodship, 1725 thousand persons were economically inactive, which accounted for 39.7% of total population aged 15 and more (in rural areas – 42.7%, in urban areas – 38.1%). Women still predominated in this group – 62.2%. Among economically inactive persons, as in previous periods, persons with lower secondary and less education predominated – 32.2%. Working age population accounted for 34.2% of total economically inactive persons.

Among economically inactive persons women predominated – 62%

**Chart 11. Structure of economically inactive men and women by reasons for economic inactivity in IV quarter 2018**



In comparison with III quarter 2018, the economically inactive population increased by 0.7% (among men by 3.2%, and in the population of women it decreased by 0.6%). Taking into account the place of residence, there was an increase in the number of economically inactive persons both among rural (by 1.4%) and urban residents (by 0.4%).

Out of the total economically inactive persons, 57.4% represented persons who did not take up work due to being retired. Other reasons for economic inactivity were: education and training – 19.0%, illness or disability – 9.8%, family and household responsibilities – 4.7%. Persons discouraged by inefficiency of job search accounted for 22 thousand, i.e. 1.3% of total economically inactive persons.

**Table 1. Economic activity of population aged 15 and more by selected indicators**

SPECIFICATION	Q3 2018	Q4 2018	
	in %	increase/decrease in pp compared to the previous period	
<b>ECONOMIC ACTIVITY RATE</b>			
<b>TOTAL</b>	<b>60.6</b>	<b>60.3</b>	<b>−0.3</b>
men	69.1	68.2	−0.9
women	52.9	53.2	0.3
Urban areas	62.1	61.9	−0.2
Rural areas	57.9	57.3	−0.6
<b>EMPLOYMENT RATE</b>			
<b>TOTAL</b>	<b>58.3</b>	<b>58.0</b>	<b>−0.3</b>
men	66.1	65.4	−0.7
women	51.3	51.5	0.2
Urban areas	59.9	59.9	—
Rural areas	55.4	54.6	−0.8
<b>UNEMPLOYMENT RATE</b>			
<b>TOTAL</b>	<b>3.8</b>	<b>3.7</b>	<b>−0.1</b>
men	4.4	4.1	−0.3
women	3.0	3.4	0.4
Urban areas	3.5	3.2	−0.3
Rural areas	4.2	4.7	0.5

**Table 2. Economic activity of population aged 15 and more by labour market status**

SPECIFICATION	Q3 2018	Q4 2018	
	in thousandS		Q3=100
<b>EMPLOYED PERSONS</b>			
<b>TOTAL</b>	<b>2 531</b>	<b>2 522</b>	<b>99.6</b>
men	1 353	1 340	99.0
women	1 178	1 183	100.4
Urban areas	1 666	1 669	100.2
Rural areas	865	853	98.6
<b>UNEMPLOYED PERSONS</b>			
<b>TOTAL</b>	<b>99</b>	<b>98</b>	<b>99.0</b>
men	62	57	91.9
women	36	41	113.9
Urban areas	61	56	91.8
Rural areas	38	42	110.5
<b>ECONOMICALLY INACTIVE PERSONS</b>			
<b>TOTAL</b>	<b>1 713</b>	<b>1 725</b>	<b>100.7</b>
men	632	652	103.2
women	1 080	1 073	99.4
Urban areas	1 056	1 060	100.4
Rural areas	657	666	101.4

**Table 3. Employment rate and unemployment rate by age**

SPECIFICATION	Q3 2018	Q4 2018	
	in %		increase/decrease in pp compared to the previous period
<b>EMPLOYMENT RATE</b>			
<b>TOTAL</b>	<b>58.3</b>	<b>58.0</b>	<b>-0.3</b>
15-24 years	29.4	26.4	-3.0
25-34	83.5	82.5	-1.0
35-44	89.4	89.6	0.2
45-54	85.9	84.7	-1.2
55 years and more	28.2	29.1	0.9

**Table 3. Employment rate and unemployment rate by age (cont.)**

SPECIFICATION	Q3 2018	Q4 2018	
	in %		increase/decrease in pp compared to the previous period
<b>UNEMPLOYMENT RATE</b>			
<b>TOTAL</b>	<b>3.8</b>	<b>3.7</b>	<b>-0.1</b>
15-24 years	12.0	13.9	1.9
25-34	4.7	4.5	-0.2
35-44	1.5	1.9	0.4
45-54	4.1	3.6	-0.5
55 years and more	2.8	2.5	-0.3

**Table 4. Employment rate and unemployment rate by educational level**

SPECIFICATION	Q3 2018	Q4 2018	
	in %		increase/decrease in pp compared to the previous period
<b>EMPLOYMENT RATE</b>			
<b>TOTAL</b>	<b>58.3</b>	<b>58.0</b>	<b>-0.3</b>
Tertiary	78.8	80.6	1.8
Post-secondary and vocational secondary	58.6	59.0	0.4
General secondary	56.5	51.3	-5.2
Basic vocational	54.2	55.0	0.8
Lower secondary, primary and incomplete primary	17.6	15.6	-2.0
<b>UNEMPLOYMENT RATE</b>			
<b>TOTAL</b>	<b>3.8</b>	<b>3.7</b>	<b>-0.1</b>
Tertiary	2.2	1.7	-0.5
Post-secondary and vocational secondary	4.0	4.5	0.5
General secondary	6.1	4.7	-1.4
Basic vocational	5.8	5.8	—
Lower secondary, primary and incomplete primary	5.0	10.3	5.3



Prepared by:

**Mazovian Centre for Regional Surveys**  
**Statistical Office in Warszawa**  
**Aneta Czyżkowska**  
Tel: 22 464 20 30  
e-mail: [a.czyzkowska@stat.gov.pl](mailto:a.czyzkowska@stat.gov.pl)

Issued by:

**Statistical Information Centre**  
**Marcin Kałuski**  
Tel: 22 464 20 91  
e-mail: [m.kaluski@stat.gov.pl](mailto:m.kaluski@stat.gov.pl)

Translated by:

**Agnieszka Gromek-Żukowska**  
Tel: 22 464 22 42  
e-mail: [a.gromek-zukowska@stat.gov.pl](mailto:a.gromek-zukowska@stat.gov.pl)

**Press office**

tel.: 22 464 20 91

e-mail: [m.kaluski@stat.gov.pl](mailto:m.kaluski@stat.gov.pl)



[warszawa.stat.gov.pl/en](http://warszawa.stat.gov.pl/en)



@Warszawa\_STAT

### Related information

[Methodological report. Labour Force Survey](#)

[Labour force survey in Poland](#)

[Quarterly information on the labour market](#)

### Data available in databases

[Local Data Bank/Labour market](#)

### Terms used in official statistics

[Activity rate](#)

[Employment rate](#)

[Unemployment rate by LFS](#)

**Evaluate**

the study

