

Economic activity of population in Mazowieckie voivodship in III quarter 2018

28.12.2018

Employment rate increased by 0.1 pp compared to the previous quarter



In comparison with II quarter 2018, the number of employed persons slightly increased, which led to an increase in the economic activity rate and the employment rate. The number of unemployed persons decreased, and economically inactive persons remained unchanged.

Economic activity of population aged 15 and more

In the III quarter 2018 among the total population of Mazowieckie voivodship aged 15 and more, employed persons accounted for 58.3%, unemployed persons – 2.3%, and economically inactive persons – 39.4%. This means that less than half of the population aged 15 and more (41.7%) did not work. In urban and in rural areas the structure was similar. There were clear differences in the structure of men and women. There were 33.9% of men and 48.7% of women without work (economically inactive and unemployed).

Figure 1. Structure of population aged 15 and more by sex in III quarter 2018

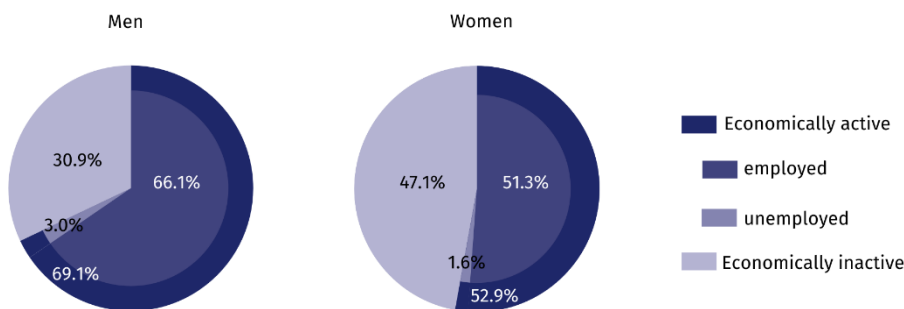
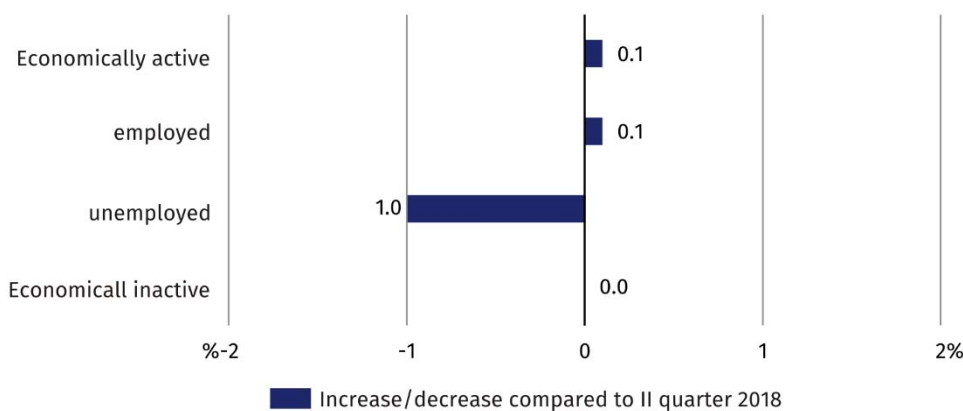


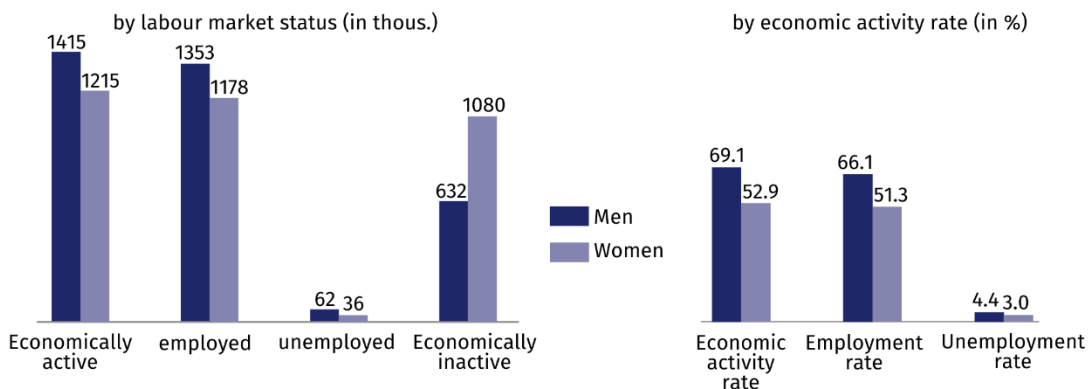
Figure 2. Changes in III quarter 2018



In comparison with II quarter 2018, the number of economically active and employed persons increased (by 0.1 pp each), there was a decrease in the number of unemployed persons (by 1.0%) and the number of economically inactive persons did not change. There was a slight decrease in the ratio of working population to non-working population. In III quarter 2018, there were 716 unemployed and economically inactive persons per 1000 employed persons, while in II quarter 2018 — 717.

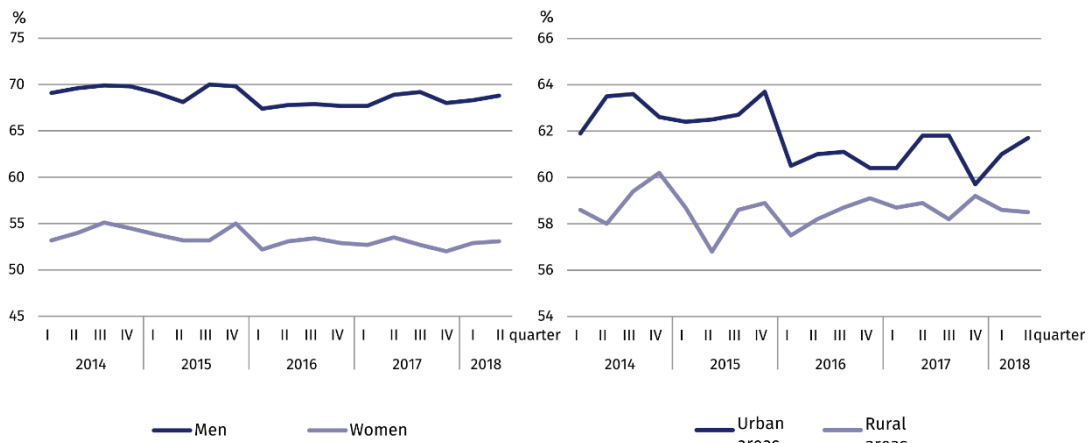
There were 716 unemployed and economically inactive persons per 1000 employed persons

Figure 3. Economic activity of population in III quarter 2018



The economic activity rate amounted to 60.6% and increased compared to the previous quarter by 0.1 pp. There was an increase in the level of economic activity among men (by 0.3 pp) and in urban areas (by 0.4 pp), and among women and in rural areas by 0.2 and 0.6 pp, respectively.

Figure 4. Economic activity rate by sex and place of residence



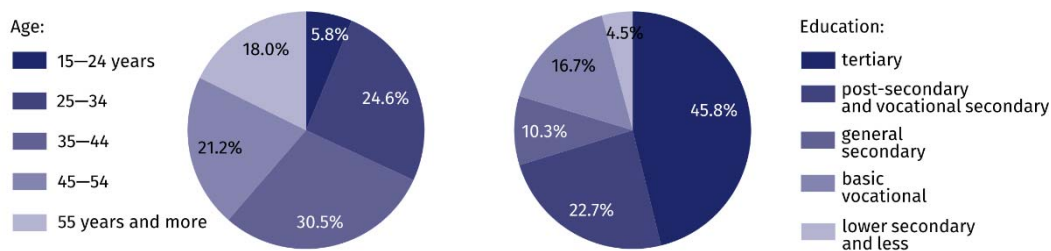
The highest value of the rate in terms of age was recorded in the 35–44 age group, which amounted to 90.7%, and the lowest among persons aged 55 and more — 29.0%. For working age population this rate amounted to 81.6%.

Employed persons

In III quarter 2018, in Mazowieckie voivodship the population of employed persons amounted to 2531 thous. persons, and the employment rate was as high as 58.3%.

Compared to II quarter 2018, the number of employed persons increased by 0.1%. An increase was recorded in the population of men (by 0.1%), and among women it did not change. The number of employed persons increased among urban residents (by 0.3%), while among rural residents it decreased (by 0.2%).

Figure 5. Structure of employed persons by age and education in III quarter 2018



In III quarter 2018, the highest employment rate was recorded among persons aged 35–44 (89.4%), and the lowest among persons aged 55 and more (28.2%).

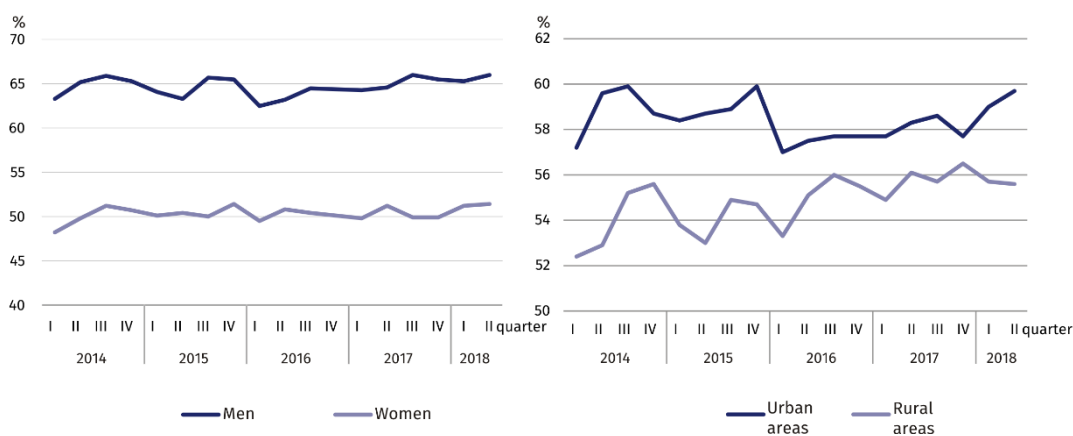
The highest increase in employment rate was recorded among persons aged 35–44 (by 2.4 pp), and a decrease among person aged 15–24 (by 4.0 pp).

For working age population the employment rate reached 78.4% (a 0.2 pp increase compared to II quarter 2018).

Among employed persons by education level, the highest employment rate was recorded among persons with higher education — 78.8%, and the lowest among persons with lower secondary and less education — 17.6%.

The highest increase in employment rate was among persons with general secondary education (by 2.4 pp), and the highest decrease among persons with post-secondary and vocational secondary education (by 1.6 pp).

Figure 6. Employment rate by sex and place of residence

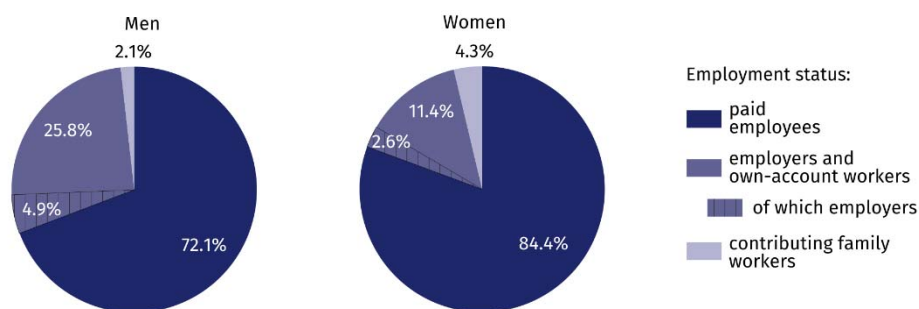


In III quarter 2018, as paid employees worked 1969 thous. persons (i.e. 77.8% of total employed persons), and their number increased by 0.3% compared to II quarter 2018. An increase was recorded among contributing family workers (from 76 thous. to 79 thous.), and among employers and own-account workers a decrease (from 494 thous. to 483 thous.).

The vast majority of employed persons worked in private sector (75.9% of the total employed). Of these, the majority (58.3%) were men. The situation was different among paid employees in public sector, in which among 609 thous. employed persons predominated women (61.7%). For an indefinite period worked 76.8% of paid employees, by 0.2 pp more than in II quarter 2018.

76% of the total employed persons worked in private sector

Figure 7. Structure of employed persons by employment status in III quarter 2018

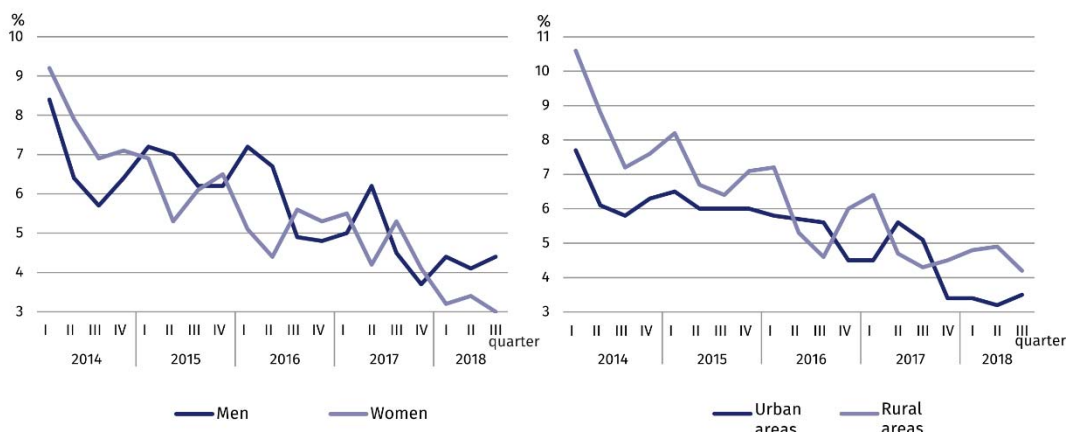


26% of men and 11% of women were employers or own-account workers

Unemployed persons

In III quarter 2018, the population of unemployed persons in Mazowieckie voivodship amounted to 99 thous. persons and decreased by 1.0% compared to II quarter of 2018.

Figure 8. Unemployment rate by sex and place of residence



Compared to previous quarter, the number of unemployed women and rural residents decreased (by 14.3% and 15.6%, respectively), and the number of unemployed men and urban residents increased (by 6.9% and 10.9% respectively).

The total unemployment rate in the voivodship amounted to 3.8%. In urban areas, it was 3.5%, i.e. by 0.7 pp lower than in rural areas. For working age population the unemployment rate reached 3.9%.

In comparison with II quarter 2018, the unemployment rate among men and urban residents increased (by 0.3 pp each), and among women and rural residents decreased (by 0.4 pp and 0.7 pp respectively).

The lowest unemployment rate was recorded among persons with higher education (2.2%), and the highest among persons with general secondary education (6.1%).

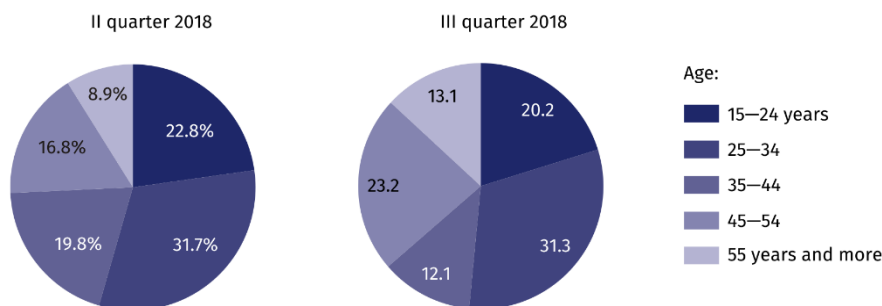
The highest decrease was recorded among persons with lower secondary and less education (by 4.2 pp), and the highest increase among persons with vocational secondary education (by 0.9 pp).

The lowest unemployment rate was noted among person aged 55 and more (2.8%), and the highest among persons aged 15–24 years (12.0%).

The highest decrease in unemployment rate was recorded among persons aged 35–44 (by 1.1 pp), and the highest increase in 45–54 age group (by 1.0 pp).

A 14% decrease in the number of unemployed women, and a 7% increase among men

Figure 9. Structure of unemployed persons by age



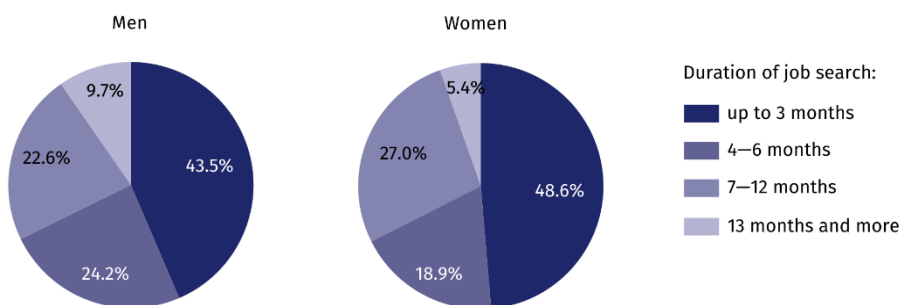
The average duration of job search by unemployed persons was 7.9 months. Women and urban residents looked for work for a shorter period of time than men and rural residents. Women looked for a job for 7.1 months on average (by 1.2 month shorter than men), and urban residents for 7.7 months (by 0.4 months shorter than rural residents).

Women and urban residents looked for a job shorter than men and rural residents

Population of long-term unemployed persons (13 months and longer) amounted to 8 thous., which represented 8.1% of the total unemployed. Long-term unemployment was more frequent among men than among women (9.7% compared to 5.6%) and also more frequent among urban than rural residents (9.8% compared to 5.3%).

Long-term unemployment occurred more often among men than women

Figure 10. Structure of unemployed persons by duration of job search in III quarter 2018

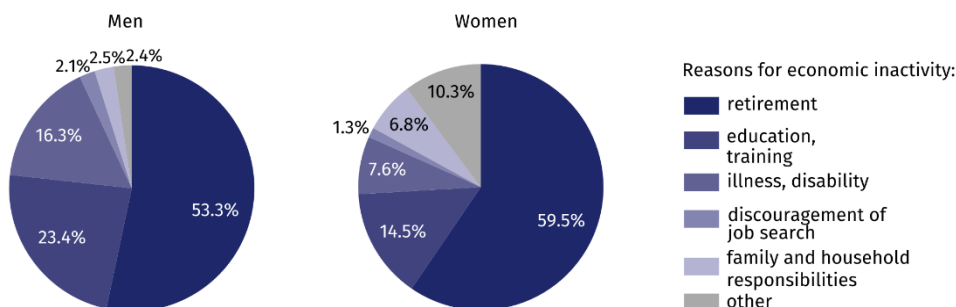


Economically inactive persons

In III quarter of 2018, in Mazowieckie voivodship, 1713 thous. persons were economically inactive, which accounted for 39.4% of total population aged 15 and more (in rural areas – 42.1%, in urban areas – 37.9%). Still, in this group women predominated – 63.0%. Among economically inactive persons, as in the previous periods, dominated persons with lower secondary and less education – 31.2%. Working age population accounted for 33.0% of total economically inactive persons.

Among economically inactive persons dominated women – 63%

Figure 11. Structure of economically inactive men and women by reasons for economic inactivity in III quarter 2018



Compared to II quarter 2018, the population of economically inactive persons remained the same (among men decreased by 0.9%, and among women increased by 0.5%). Taking into account the place of residence, an increase in the number of economically inactive persons was recorded among rural residents (by 1.5%), and among urban residents a decrease (by 0.9%).

Out of the total economically inactive persons, 57.2% made up persons who did not take up work due to being retired. Another reasons for economic inactivity were: education and training – 17.8%, illness or disability – 10.8%, family and household responsibilities – 5.2%. The population of persons discouraged by inefficiency of job search amounted to 27 thous., i.e. 1.6% of total economically inactive persons.

Table 1. **Economic activity of population aged 15 and more by selected indicators**

SPECIFICATON	II quarter 2018	III quarter 2018	
	in %		increase/decrease in pp compared to the previous period
ECONOMIC ACTIVITY RATE			
TOTAL	60.5	60.6	0.1
men	68.8	69.1	0.3
women	53.1	52.9	−0.2
Urban areas	61.7	62.1	0.4
Rural areas	58.5	57.9	−0.6
EMPLOYMENT RATE			
TOTAL	58.2	58.3	0.1
men	66.0	66.1	0.1
woman	51.4	51.3	−0.1
Urban areas	59.7	59.9	0.2
Rural areas	55.6	55.4	−0.2
UNEMPLOYMENT RATE			
TOTAL	3.8	3.8	−
men	4.1	4.4	0.3
women	3.4	3.0	−0.4
Urban areas	3.2	3.5	0.3
Rural areas	4.9	4.2	−0.7

Table 2. **Economic activity of population aged 15 years and more by labour market status**

SPECIFICATION	II quarter 2018	III quarter 2018	
	in thous.	II quarter=100	
EMPLOYED PERSONS			
TOTAL	2 528	2 531	100.1
men	1 351	1 353	100.1
women	1 178	1 178	100.0
Urban areas	1 661	1 666	100.3
Rural areas	867	865	99.8
UNEMPLOYED PERSONS			
TOTAL	100	99	99.0
men	58	62	106.9
women	42	36	85.7
Urban areas	55	61	110.9
Rural areas	45	38	84.4
ECONOMICALLY INACTIVE PERSONS			
TOTAL	1 713	1 713	100.0
men	638	632	99.1
women	1 075	1 080	100.5
Urban areas	1 066	1 056	99.1
Rural areas	647	657	101.5

Table 3. **Employment rate and unemployment rate by age**

SPECIFICATION	II quarter 2018	III quarter 2018	
	in %	increase/decrease in pp compared to the previous period	
EMPLOYMENT RATE			
TOTAL	58.2	58.3	0.1
15–24 years	33.4	29.4	–4.0
25–34	82.5	83.5	1.0
35–44	87.0	89.4	2.4
45–54	85.8	85.9	0.1
55 years and more	28.5	28.2	–0.3

Table 3. **Employment rate and unemployment rate by age (cont.)**

SPECIFICATION	II quarter 2018	III quarter 2018	
	in %		increase/decrease in pp compared to the previous period
UNEMPLOYMENT RATE			
TOTAL	3.8	3.8	—
15–24 years	12.1	12.0	–0.1
25–34	4.9	4.7	–0.2
35–44	2.6	1.5	–1.1
45–54	3.1	4.1	1.0
55 years and more	1.9	2.8	0.9

Table 4. **Employment rate and unemployment rate by educational level**

SPECIFICATION	II quarter 2018	III quarter 2018	
	in %		increase/decrease in pp compared to the previous period
EMPLOYMENT RATE			
TOTAL	58.2	58.3	0.1
Tertiary	78.5	78.8	0.3
Post-secondary and vocational secondary	60.2	58.6	–1.6
General secondary	54.1	56.5	2.4
Vocational secondary	55.1	54.2	–0.9
Lower secondary, primary and incomplete primary	16.8	17.6	0.8
UNEMPLOYMENT RATE			
TOTAL	3.8	3.8	—
Tertiary	2.0	2.2	0.2
Post-secondary and vocational secondary	4.4	4.0	–0.4
General secondary	6.2	6.1	–0.1
Vocational secondary	4.9	5.8	0.9
Lower secondary, primary and incomplete primary	9.2	5.0	–4.2

Prepared by:

Mazovian Centre for Regional Surveys
Statistical Office in Warszawa
Aneta Czyżkowska
Tel: 22 464 20 30
e-mail: a.czyzkowska@stat.gov.pl

Issued by:

Statistical Information Centre
Marcin Kałuski
Tel: 22 464 20 91
e-mail: m.kaluski@stat.gov.pl

Translated by:

Agnieszka Gromek-Żukowska
Tel: 22 464 22 42
e-mail: a.gromek-zukowska@stat.gov.pl

Press office

tel.: 22 464 20 91

e-mail: m.kaluski@stat.gov.pl



warszawa.stat.gov.pl



@Warszawa_STAT

Related information

[Methodology notes. Labour Force Survey](#)

[Economic activity of population of Poland](#)

[Monitoring of the labour market](#)

Data available in databases

[Local data bank/Labour market](#)

Terms used in official statistics

[Economic activity rate of population](#)

[Employment rate](#)

[Unemployment rate](#)