

# Statistics of Warszawa No. 12/2019

29th January 2020

**↑ 106.3**

Dynamics of sold production of industry y/y

In December 2019, as in previous months, both average employment and unemployment remained at a similar level. A further increase in sold production of industry was observed, whereas the dynamics of construction and assembly production was lower y/y. There were also far fewer dwellings completed in December than in the previous year.

## Average employment

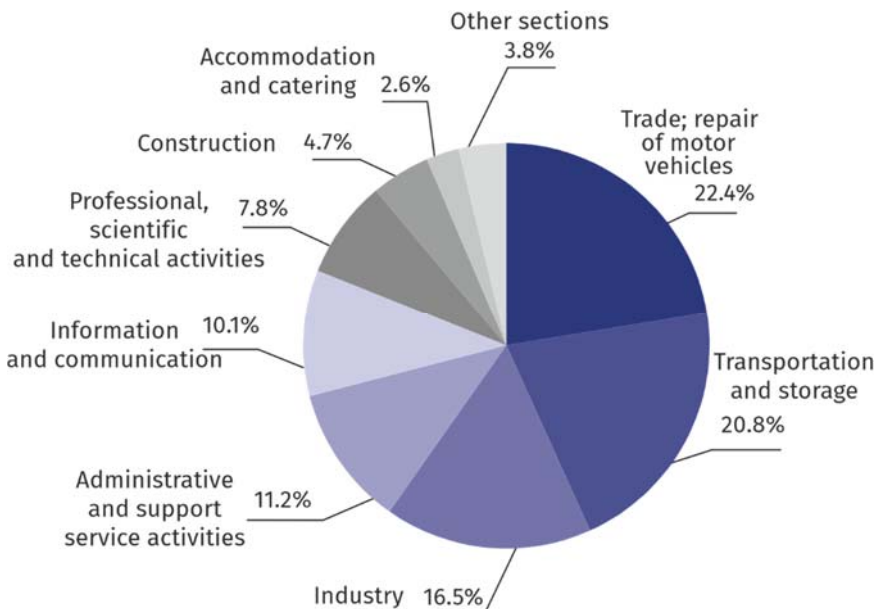
Average employment in the enterprise sector in December 2019 amounted to 1094.6 thousand persons and was by 4.0 thousand persons, i.e. by 0.4% higher than in November 2019 and by 21.1 thousand persons, i.e. by 2.0% higher than in December 2018.

Compared to November 2019, an increase in the average employment was recorded in the following sections: administrative and support service activities (by 2.1%), arts, entertainment and recreation (by 1.7%), trade; repair of motor vehicles (by 0.8%), accommodation and catering (by 0.5%), transportation and storage, construction and professional, scientific and technical activities (by 0.3% each).

Whereas a decrease in the average employment was recorded in the sections: real estate activities (by 2.0%) and information and communication (by 1.5%).

Average employment in the enterprise sector in December 2019 was by 2.0% higher than a year before

**Chart 1. Structure of average employment by PKD (NACE Rev.2) sections in December 2019**



As compared to December 2018, an increase in the average employment was recorded in the following sections: arts, entertainment and recreation (by 12.4%), professional, scientific and technical activities (by 5.6%), trade; repair of motor vehicles (by 5.2%), real estate activities (by 4.4%), transportation and storage (by 3.3%), accommodation and catering (by 2.6%), administrative and support service activities (by 1.6%).

A decrease in the average employment was recorded in the following sections: information and communication (by 2.7%), industry (by 2.2%), construction (by 2.0%).

## Registered unemployment

At the end of December 2019, the number of registered unemployed persons amounted to 17367 and was by 363 persons, i.e. by 2.0% smaller than at the end of November 2019 and by 2015 persons, i.e. by 10.4% smaller than in the corresponding period of 2018.

The number of registered unemployed women amounted to 8573, which accounted for 49.4% of the total unemployed (a month before 49.6%, and a year before 50.1%) and 13.5% of unemployed women in Mazowieckie Voivodship. As compared to November 2019, the number of unemployed women decreased by 223 persons, i.e. by 2.5%, and compared to December 2018 decreased by 1134 persons, i.e. by 11.7%.

The registered unemployment rate amounted to 1.3% (as in the previous month, and 1.5% in the previous year), the average in Mazowieckie Voivodship was 4.4% (4.3% a month before, and 4.9% a year before), while the national average was 5.2% (5.1% in the previous month, and 5.8% a year before).

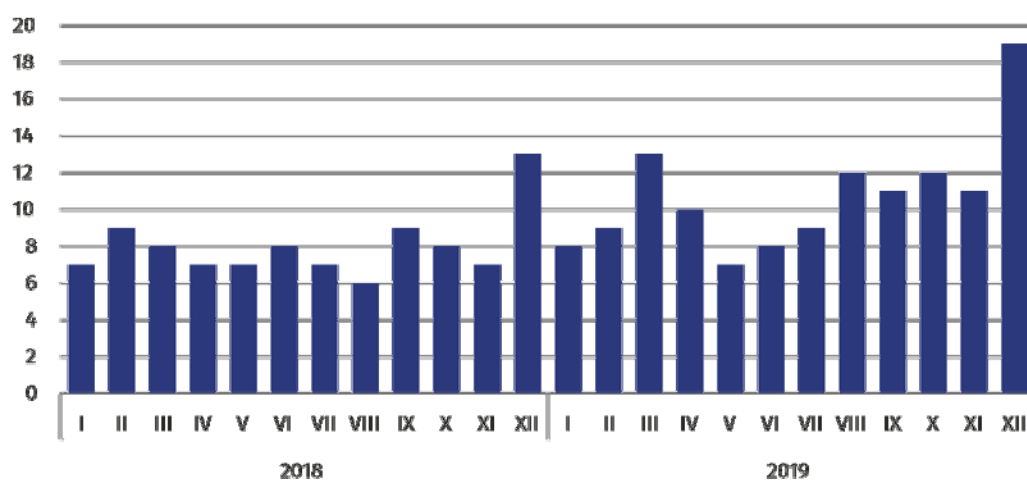
In December 2019, there were 2135 unemployed persons registered in labour offices (2660 in November 2019, and 2453 in December 2018). Registered unemployed persons accounted for 15.6% of the total registered unemployed in the voivodship.

The number of persons registering for the first time amounted to 568 (a month before 802), which accounted for 26.6% of the total unemployed who registered in December 2019 and 28.4% of persons registering for the first time in the voivodship. The share of persons terminated due to company reasons among unemployed persons registered in December 2019 amounted to 3.0% (4.3% in Mazowieckie Voivodship), 2.9% a month before and 1.4% a year before.

In December 2019, 2498 persons were removed from unemployment rolls (2385 in November 2019, and 2897 in December 2018), which accounted for 20.2% of unemployed persons removed from unemployment rolls in Mazowieckie Voivodship. Out of unemployed persons removed from unemployment rolls, 1443 took up work. Moreover, 685 persons lost their status of the unemployed as a result of not confirming their readiness to take up work. The reason for removing from the register was also voluntarily giving up the status of the unemployed, starting training or traineeship, acquisition of retirement rights of pre-retirement benefit, acquisition of pension rights and other.

There were 14366 persons who were not entitled to the unemployment benefit, i.e. 82.7% of the total unemployed (16339 persons a year before, i.e. 84.3%). Whereas 3001 unemployed persons were entitled to the unemployment benefit.

**Chart 2. Number of unemployed persons per job offer (as of end of month)**



In December 2019, there were 2336 job offers submitted to labour offices, which accounted for 22.7% of job offers in Mazowieckie Voivodship and at the end this month the labour offices had job offers for 915 persons. At the end of December 2019, there were 19 persons per one job offer (11 a month before, 13 a year before), in Mazowieckie Voivodship 27 persons (15 in the previous month and 25 in the previous year) registered as unemployed.

In December 2019, 9.6% less job offers were reported than a year before

At the end of December 2019, the number of registered unemployed persons was by 10.4% smaller than a year before, and the unemployment rate amounted to 1.3%

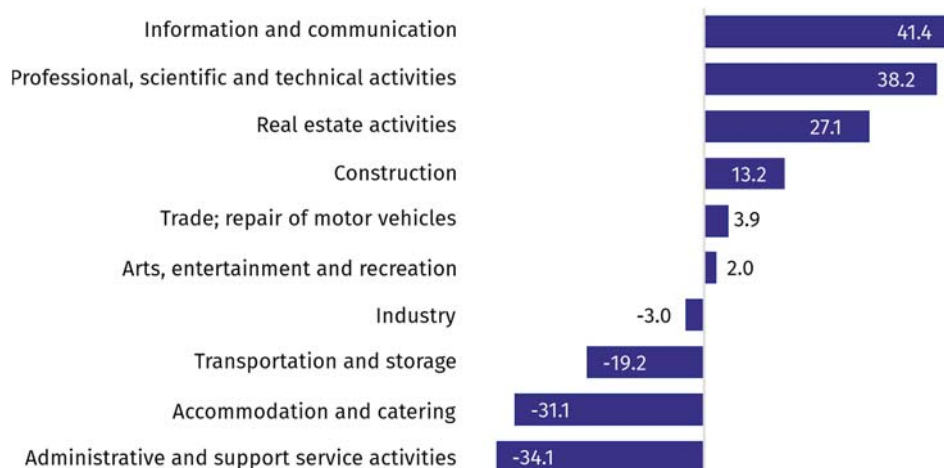
In December 2019, the number of persons removed from unemployment rolls was by 13.8% smaller than a year before

## Wages and salaries

The average monthly gross wages and salaries in the enterprise sector in December 2019 amounted to PLN 6762.85 and were by 4.8% higher as compared both to the previous month and to the corresponding period of 2018.

Compared to November 2019, the increase in the average gross wages and salaries was recorded in the following sections: real estate activities (by 19.5%), arts, entertainment and recreation (by 16.3%), trade; repair of motor vehicles (by 9.1%), construction (by 8.2%), professional, scientific and technical activities (by 7.6%), accommodation and catering (by 4.9%), industry (by 2.6%), information and communication (by 2.2%), administrative and support service activities (by 1.6%), transportation and storage (by 0.3%).

**Chart 3. Relative deviations (in %) of monthly gross wages and salaries in selected sections from average wages and salaries in enterprise sector in December 2019**



Compared to December 2018, an increase in the average gross wages and salaries was recorded in the sections: construction (by 10.4%), administrative and support service activities (by 9.0%), professional, scientific and technical activities (by 7.0%), real estate activities (by 6.9%), industry (by 6.1%), information and communication and accommodation and catering (by 3.5% each), trade; repair of motor vehicles and transportation and storage (by 3.0% each), arts, entertainment and recreation (by 1.3%).

## Industry

Sold production of industry in December 2019 amounted (at current prices) to PLN 11925.6 million and was (at constant prices) larger as compared to the corresponding period of 2018 by 6.3%. As compared to November 2018, an increase by 4.5% was recorded in sold production in manufacturing.

In January–December 2019, sold production of industry amounted to PLN 131910.1 million (at current prices) and was (at constant prices) higher by 5.0% than in the corresponding period of 2018. Production in manufacturing recorded a 8.0% increase.

Among divisions included in manufacturing, the sales increase was recorded, among others, in: manufacture of computer, electronic and optical products (by 32.2%), manufacture of machinery and equipment n.e.c. (by 16.0%), manufacture of food products (by 14.7%), manufacture of beverages (by 13.9%), printing and reproduction of recorded media (by 13.3%), manufacture of chemicals and chemical products, repair and installation of machinery and equipment (by 12.4% each).

The decrease in sales was recorded, among others, in: other manufacturing (by 29.0%), manufacture of leather and related products (by 16.9%), manufacture of products of wood, cork, straw and wicker (by 16.1%), manufacture of furniture (by 13.5%), manufacture of other transport equipment (by 8.1%), manufacture of paper and paper products (by 7.5%), manufacture of motor vehicles, trailers and semi-trailers (by 7.0%).

Average monthly gross wages and salaries in the enterprise sector in December 2019 amounted to PLN 6762.85 and were by 4.8% higher than in December 2018

Sold production in manufacturing (at constant prices) in December 2019 was by 4.5% larger than a year before

Labour productivity in industry, measured by the value of sold production per employed person in January–December 2019 amounted to PLN 735.1 thousand (at current prices) and was – at constant prices – by 6.8% higher than a year before.

## Construction

Sold production of construction in December 2019 amounted (at current prices) to PLN 5006.7 million and compared to November 2019 was higher by 10.7%, and compared to the corresponding period of the previous year it increased by 3.5%.

In January–December 2019, sold production of construction reached the value of PLN 55100.5 million, i.e. by 8.3% larger than in the corresponding period of 2018.

Construction and assembly production in December 2019 reached PLN 1382.6 million (at current prices) and accounted for 27.6% of sold production of construction. As compared to the previous month, construction and assembly production increased by 12.0%, and compared to December 2018 it was lower by 6.0%.

In January–December 2019, construction and assembly production was at the level of PLN 13465.4 million and accounted for 24.4% of sold production of construction (28.1% a year before). As compared to the corresponding period of the previous year, construction and assembly production was smaller by 5.7%.

The decrease in production in relation to the corresponding period of 2018 occurred in entities conducting activity in the field of construction of buildings (by 11.3%) and in companies carrying out specialized construction activities (by 7.9%) as well as in entities conducting activity in civil engineering (by 1.1%).

Labour productivity measured by production per employed person in construction, in December 2019 amounted to PLN 96.8 thousand and was by 10.4% higher than a month before and by 5.6% higher than in December 2018.

## Trade

Retail sales in trade and non-trade enterprises in December 2019 (at current prices) were by 19.7% larger than in November 2019 and by 10.1% higher compared to December 2018.

Compared to November 2019, there was, among others, higher sales of: press, books, other sales in specialized stores (by 42.5%), other retail sales in non-specialized stores (by 35.2%), food, beverages and tobacco (by 31.4%), retail sales conducted by mail order houses (by 26.4%), furniture, electronics and household appliances (by 26.1%), sales of pharmaceuticals, cosmetics, orthopedic equipment (by 22.1%), textiles, clothing, footwear (by 16.7%).

However, there was lower sales of solid, liquid and gas fuels (by 2.4%), motor vehicles, motorcycles, parts (by 2.3%).

As compared to December 2018, there was an increase, among others, in the sales of: retail sales conducted by mail order houses (by 155.2%), furniture, electronics and household appliances (by 23.0%), other sales in non-specialized stores (by 14.6%), pharmaceuticals, cosmetics, orthopedic equipment (by 8.8%), food, beverages and tobacco (by 7.3%), other sales (by 5.3%), motor vehicles, motorcycles, parts (by 4.5%).

However, the decrease was recorded in the sales of solid, liquid and gas fuels (by 3.1%).

In January–December 2019, as compared to the corresponding period of 2018, the retail sales went up by 8.6%.

Wholesale in trade enterprises in December 2019 (at current prices) was by 10.6% smaller as compared to the previous month and by 3.8% higher as compared to December 2018, and in wholesale enterprises it was lower by 11.3% and higher by 2.8%, respectively.

In January–December 2019, wholesale in trade units was by 5.9% higher than a year before, while in wholesale enterprises it was higher by 3.0%.

Construction and assembly production (at current prices) in December 2019 was by 6.0% smaller than a year before

Retail sales (at current prices) in trade and non-trade enterprises in December 2019 was by 10.1% larger than in December 2018

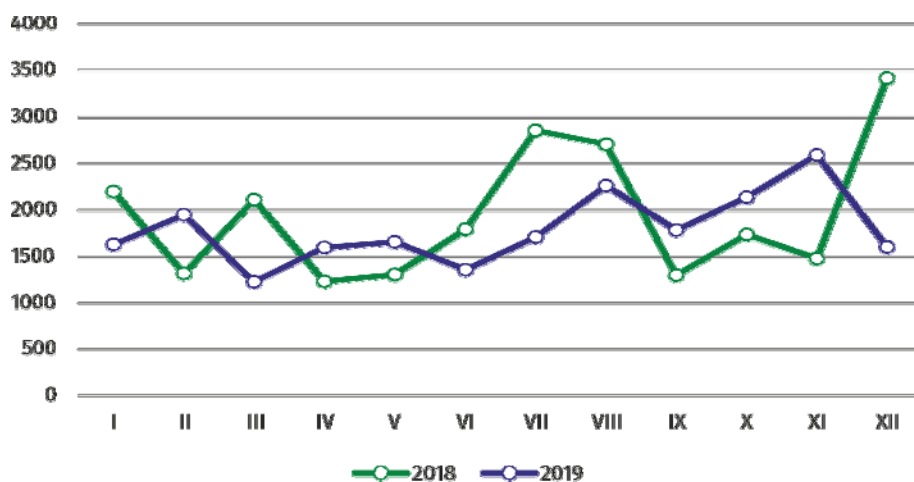
Wholesale (at current prices) in trade enterprises was by 3.8% higher than a year before

## Housing construction<sup>1</sup>

According to preliminary data, 1601 dwellings were completed in Warszawa in December 2019, i.e. by 53.1% less than a year before.

In January–December 2019, 21486 dwellings were completed (by 8.3% less than in the corresponding period of 2018), and in Mazowieckie Voivodship 43103 dwellings, i.e. by 4.9% more than in January–December 2018. The drop in the number of dwellings completed was recorded in municipal construction from 68 to 12, i.e. by 82.4% less, in private construction from 615 to 550, i.e. by 10.6% less and in construction for sale or rent from 22552 to 20553 dwellings, i.e. by 8.9% less. Whereas the increase was recorded in company construction from 1 to 18 dwellings and in cooperative construction from 138 to 353, i.e. by 155.8% more.

Chart 4. Dwellings completed



In January–December 2019, the construction began in 22259 dwellings (by 8.2% less than in the corresponding period of 2018), of which: 20919 in construction for sale or rent, 872 in private construction, 253 in cooperative construction, 215 in dwellings built by public building societies.

In January–December 2019, the number of dwellings for which permits have been granted or which have been registered with a construction project amounted to 22285 (by 10.9% less than in the corresponding period of 2018), of which 602 dwellings buildings built by private investors.

The average useful floor area of a dwelling completed in January–December 2019, amounted to 59.6 m<sup>2</sup> and decreased compared to the corresponding period of 2018 by 0.1 m<sup>2</sup>. In private construction, the average useful floor area of dwellings amounted to 194.1 m<sup>2</sup> (by 1.8 m<sup>2</sup> more than in the corresponding period of 2018), in cooperative construction — 57.5 m<sup>2</sup>, in construction for sale or rent — 56.1 m<sup>2</sup>, in municipal construction — by 40.8 m<sup>2</sup> (by 11.3 m<sup>2</sup> fewer), in company construction — 34.1 m<sup>2</sup>.

## Entities of the national economy<sup>2</sup>

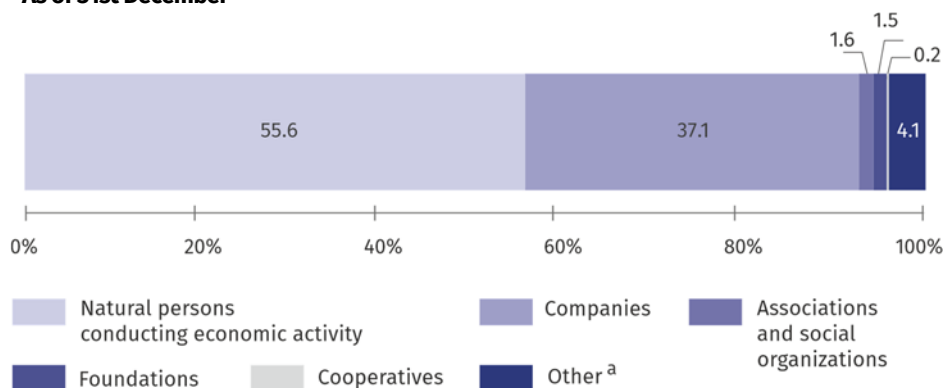
At the end of December 2019, there were 456338 entities of the national economy registered in the REGON register in Warszawa, which accounted for 53.4% of the total in Mazowieckie Voivodship. Compared with September 2019, the number of entities of the national economy increased by 5296 (i.e. by 1.2%), and compared to December 2018 increased by 22515 (i.e. by 5.2%).

In January–December 2019, the construction began in 22259 dwellings, i.e. by 8.2% less than in the corresponding period of the previous year

<sup>1</sup> Reporting data – may change after preparing quarterly reports.

<sup>2</sup> Excluding persons tending private farms in agriculture.

**Chart 5. Structure of entities of the national economy by legal status in 2019**  
As of 31st December



a Of which state owned enterprises.

In the capital city, in December 2019, the most numerous were entities dealing with professional, scientific and technical activities – 88329 (19.4%), trade; repair of motor vehicles – 86811 (19.0%), information and communication – 44260 (9.7%), construction – 33287 (7.3%), real estate activities – 28003 (6.1%), other service activities – 27309 (6.0%), manufacturing – 24163 (5.3%).

Compared to September 2019, the number of entities increased among others in the sections: electricity, gas, steam and air conditioning supply (by 4.9%), public administration and defence; compulsory social security (by 2.5%), information and communication (by 2.2%), administrative and support service activities and social work activities (by 1.9% each), arts, entertainment and recreation (by 1.5%), water supply; sewerage, waste management and remediation activities and professional, scientific and technical activities (by 1.4% each), construction and real estate activities (by 1.3% each).

In comparison with December 2018, the number of entities increased in the sections: electricity, gas, steam and air conditioning supply (by 14.0%), information and communication (by 9.6%), administrative and support service activities (by 7.9%), arts, entertainment and recreation (by 6.5%), professional, scientific and technical activities (by 6.4%), accommodation and catering (by 6.2%), construction (by 6.1%), education and human health and social work activities (by 6.0% each), real estate activities (by 5.8%).

At the end of December 2019, the most numerous group of entities by kind of conducted activity represented units dealing with professional, scientific and technical activities

Prepared by:  
**Statistical Office in Warszawa**  
**Director Zofia Kozłowska**  
Tel.: +48 22 464 23 15

Issued by:  
**Statistical Information Centre**  
**Marcin Kałuski**  
Tel.: +48 22 464 20 91  
e-mail: [m.kaluski@stat.gov.pl](mailto:m.kaluski@stat.gov.pl)

**Press office**

Tel.: +48 22 464 20 91

e-mail: [m.kaluski@stat.gov.pl](mailto:m.kaluski@stat.gov.pl)



[warszawa.stat.gov.pl/en](http://warszawa.stat.gov.pl/en)



[@Warszawa\\_STAT](https://twitter.com/Warszawa_STAT)

**Related information**

[Communication and Announcements](#)

**Data available in databases**

[Local Data Bank → Labour market](#)

**Terms used in official statistics**

[Registered unemployed persons](#)

[Registered unemployment rate](#)

[Average paid employment](#)

[Average monthly gross wages and salaries](#)

[Dwellings completed](#)

[Gross turnover profitability indicator](#)

[Net turnover profitability indicator](#)

