

Statistics of Warszawa No. 11/2019

31st December 2019

↑ 116.6

Dynamics of sold production of industry y/y

In November 2019, positive changes in the economy continued, although the symptoms of a slowdown are noticeable. The increase in average employment was at a similar level as in the previous months. Despite the increase in the number of the unemployed compared to the previous month, the registered unemployment rate remained unchanged. The average monthly gross wages and salaries grew at a slower pace than in the previous year. A further increase in sold production of industry was observed, whereas the dynamics of construction and assembly production was lower y/y the second month in a row. Retail sales increased compared to 2018. November was also characterized by a much larger number of dwellings completed than in the previous year.

In November 2019, 75.1% more dwellings were completed than a year before

Average paid employment

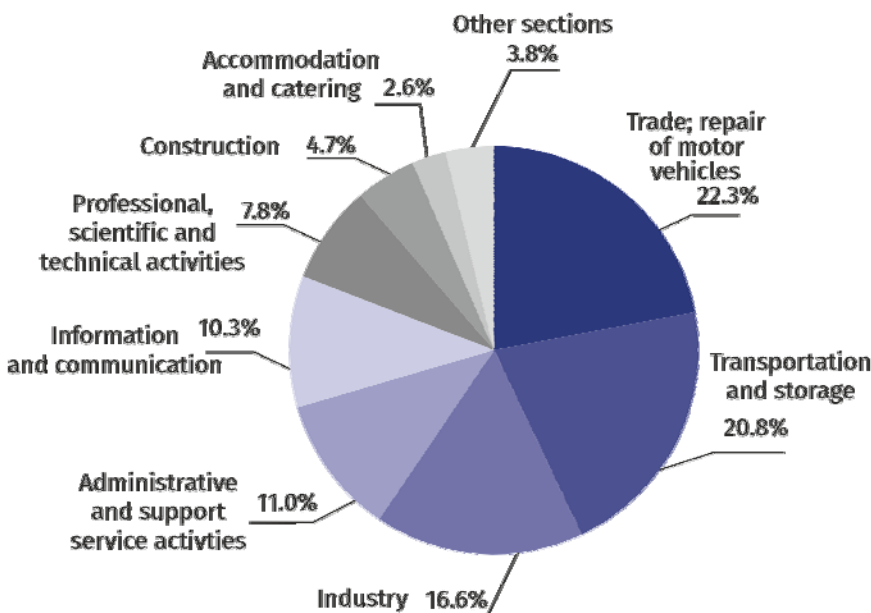
Average employment in the enterprise sector in November 2019 amounted to 1090.6 thousand persons and was by 5.0 thousand persons, i.e. by 0.5% higher than in October 2019 and by 20.8 thousand persons, i.e. by 1.9% higher than in November 2018.

Compared to October 2019, an increase in the average employment was recorded in the following sections: arts, entertainment and recreation (by 1.2%), real estate activities (by 1.1%), industry (by 1.0%), administrative and support service activities (by 0.9%), trade; repair of motor vehicles (by 0.5%), transportation and storage (by 0.3%) and information and communication (by 0.2%).

Whereas a decrease in the average employment was recorded in the sections: construction (by 0.3%) and accommodation and catering (by 0.1%).

Average employment in the enterprise sector in November 2019 was by 1.9% higher than a year before

Chart 1. Structure of average employment by PKD sections in November 2019



As compared to November 2018, an increase in the average employment was recorded in the following sections: arts, entertainment and recreation (by 12.0%), real estate activities (by 7.4%), professional, scientific and technical activities (by 7.3%), , trade; repair of motor vehicles (by 4.8%), transportation and storage (by 3.2%), accommodation and catering (by 1.4%).

A decrease in the average employment was recorded in the following sections: industry (by 1.9%), construction (by 1.5%), information and communication (by 1.0%), administrative and support service activities (by 0.8%).

Registered unemployment

At the end of November 2019, the number of registered unemployed persons amounted to 17730 and was by 275 persons, i.e. by 1.6% larger than at the end of October 2019 and by 2096 persons, i.e. by 10.6% smaller than in the corresponding period of 2018.

The number of registered unemployed women amounted to 8796, which accounted for 49.6% of the total unemployed (a month before 50.1%, and a year before 50.5%) and 13.8% of unemployed women in Mazowieckie Voivodship. As compared to October 2019, the number of unemployed women increased by 58 persons, i.e. by 0.7%, and compared to November 2018 decreased by 1219 persons, i.e. by 12.2%.

The registered unemployment rate amounted to 1.3% (as in the previous month, and 1.5% in the previous year), the average in Mazowieckie Voivodship was 4.3% (as a month before, and 4.8% a year before), while the national average was 5.1% (5.0% in the previous month, and 5.7% a year before).

In November 2019, there were 2660 unemployed persons registered in labour offices (2831 in October 2019, and 2889 in November 2018). Registered unemployed persons accounted for 18.3% of the total registered unemployed in the voivodship.

The number of persons registering for the first time amounted to 802 (a month before 797), which accounted for 30.2% of the total unemployed who registered in November 2019 and 28.7% of persons registering for the first time in the voivodship. The share of persons terminated due to company reasons among unemployed persons registered in November 2019 amounted to 2.9% (4.0% in Mazowieckie Voivodship), 2.8% a month before and 1.5% a year before.

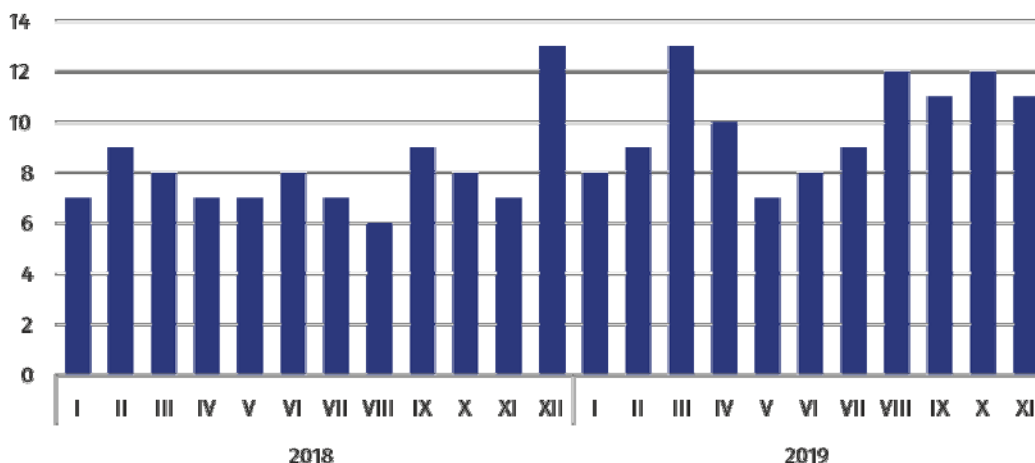
In November 2019, 2385 persons were removed from unemployment rolls (3545 in October 2019, and 3279 in November 2018), which accounted for 17.6% of unemployed persons removed from unemployment rolls in Mazowieckie Voivodship. Out of unemployed persons removed from unemployment rolls, 1224 took up work. Moreover, 677 persons lost their status of the unemployed as a result of not confirming their readiness to take up work. The reason for removing from the register was also voluntarily giving up the status of the unemployed, starting training or traineeship, acquisition of retirement rights of pre-retirement benefit, acquisition of pension rights and other.

There were 14635 persons who were not entitled to the unemployment benefit, i.e. 82.5% of the total unemployed (16729 persons a year before, i.e. 84.4%). Whereas 3095 unemployed persons were entitled to the unemployment benefit.

At the end of November 2019, the number of registered unemployed persons was by 10.6% smaller than a year before, and the unemployment rate amounted to 1.3%

In November 2019, the number of persons removed from unemployment rolls was by 27.3% smaller than a year before

Chart 2. Number of unemployed persons per job offer (as of end of month)



In November 2019, there were 3332 job offers submitted to labour offices, which accounted for 27.6% of job offers in Mazowieckie Voivodship and at the end this month the labour offices had job offers for 1607 persons. At the end of November 2019, there were 11 persons per one job offer (12 a month before, 7 a year before), in Mazowieckie Voivodship 15 persons (14 in the previous month and 12 in the previous year) registered as unemployed.

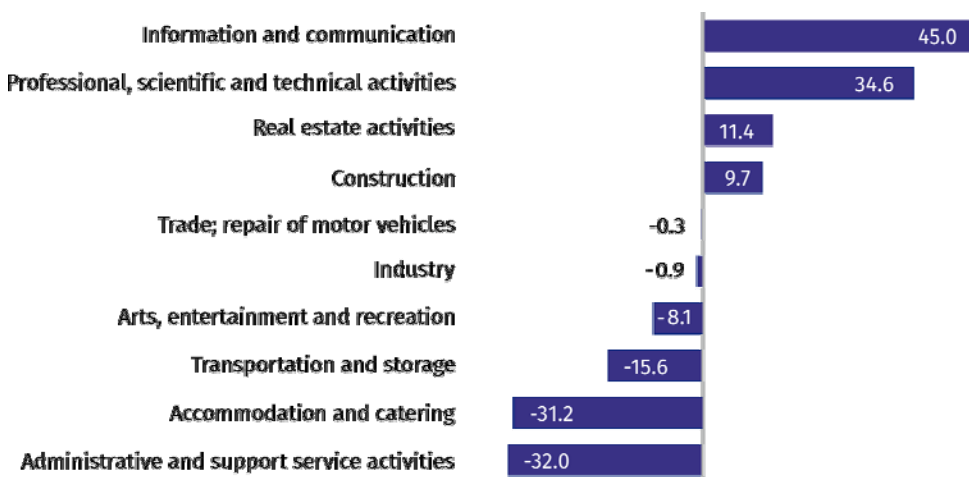
Wages and salaries

The average monthly gross wages and salaries in the enterprise sector in November 2019 amounted to PLN 6453.56 and were by 3.5% lower as compared to the previous month and by 4.2% higher than in the corresponding period of 2018.

Compared to October 2019, the decrease in the average gross wages and salaries was recorded in the following sections: transportation and storage (by 15.9%), construction (by 8.4%), accommodation and catering (by 3.8%), trade; repair of motor vehicles (by 1.3%).

Whereas the increase in the average gross wages and salaries was recorded in the following sections: industry (by 2.8%), real estate activities (by 1.7%), administrative and support service activities (by 1.6%), arts, entertainment and recreation (by 0.6%), professional, scientific and technical activities (by 0.3%), information and communication (by 0.2%).

Chart 3. Relative deviations (in %) of monthly gross wages and salaries in selected sections from average wages and salaries in enterprise sector in November 2019



Compared to November 2018, an increase in the average gross wages and salaries was recorded in the sections: administrative and support service activities (by 12.3%), arts, entertainment and recreation (by 6.3%), trade; repair of motor vehicles and transportation and storage (by 5.0% each), professional, scientific and technical activities (by 4.8%), construction (by 2.9%), information and communication (by 2.8%), accommodation and catering (by 2.7%), industry (by 0.8%).

Whereas the decrease in the average gross wages and salaries was recorded in the section of real estate activities (by 1.8%).

Industry

Sold production of industry in November 2019 amounted (at current prices) to PLN 12866.4 million and was (at constant prices) larger as compared to the corresponding period of 2018 by 16.6%. As compared to November 2018, an increase by 3.3% was recorded in sold production in manufacturing.

In January–November 2019, sold production of industry amounted to PLN 120257.2 million (at current prices) and was (at constant prices) higher by 6.1% than in the corresponding period of 2018. Production in manufacturing recorded a 8.5% increase.

Among divisions included in manufacturing, the sales increase was recorded, among others, in: manufacture of computer, electronic and optical products (by 42.3%), manufacture of machinery and equipment n.e.c. (by 16.8%), manufacture of food products (by 14.9%), manufac-

In November 2019, 14.7% less job offers were reported than a year before

Average monthly gross wages and salaries in the enterprise sector in November 2019 amounted to PLN 6453.56 and were by 4.2% higher than in November 2018

Sold production in manufacturing (at constant prices) in November 2019 was by 3.3% larger than a year before

ture of beverages (by 14.7%), printing and reproduction of recorded media (by 14.6%), manufacture of chemicals and chemical products (by 13.7%), repair and installation of machinery and equipment (by 13.2%).

The decrease in sales was recorded, among others, in: other manufacturing (by 29.5%), manufacture of products of wood, cork, straw and wicker (by 15.6%), manufacture of furniture (by 13.1%), manufacture of leather and related products (by 12.8%), manufacture of paper and paper products (by 7.0%), manufacture of motor vehicles, trailers and semi-trailers (by 6.4%), manufacture of other transport equipment (by 5.5%).

Labour productivity in industry, measured by the value of sold production per employed person in January–November 2019 amounted to PLN 671.9 thousand (at current prices) and was – at constant prices – by 8.0% higher than a year before.

Construction

Sold production of construction in November 2019 amounted (at current prices) to PLN 4522.4 million and compared to October 2019 was smaller by 8.3%, and compared to the corresponding period of the previous year, it decreased by 0.6%.

In January–November 2019, sold production of construction reached the value of PLN 49661.3 million, i.e. by 9.1% larger than in the corresponding period of 2018.

Construction and assembly production in November 2019 reached PLN 1234.8 million (at current prices) and accounted for 27.3% of sold production of construction. As compared to the previous month, construction and assembly production decreased by 5.1%, and compared to November 2018 it was lower by 12.0%.

In January–November 2019, construction and assembly production was at the level of PLN 12101.9 million and accounted for 24.4% of sold production of construction (28.4% a year before). As compared to the corresponding period of the previous year, construction and assembly production was smaller by 6.3%.

The decrease in production in relation to the corresponding period of 2018 occurred in entities conducting activity in the field of construction of buildings (by 11.7%) and in companies carrying out specialized construction activities (by 7.4%) as well as in entities conducting activity in civil engineering (by 2.3%).

Labour productivity measured by production per employed person in construction, in November 2019 amounted to PLN 87.6 thousand and was by 8.0% lower than a month before and by 0.9% higher than in November 2018.

Trade

Retail sales in trade and non-trade enterprises in November 2019 (at current prices) were by 4.3% larger than in October 2019 and by 9.2% higher compared to November 2018.

Compared to October 2019, larger, among others, were: furniture, electronics and household appliances (by 16.5%), sales of pharmaceuticals, cosmetics, orthopedic equipment (by 10.3%), motor vehicles, motorcycles, parts (by 5.6%), press, books, other sales in specialized stores (by 4.2%), retail sales conducted by mail order houses (by 2.6%), textiles, clothing, footwear (by 1.1%).

However, sales of solid, liquid and gas fuels were lower (by 6.6%).

As compared to November 2018, the sales were higher, among others, in the groups: „retail sales conducted by mail order houses” (by 69.3%), “furniture, electronics and household appliances” (by 19.3%), “food, beverages and tobacco” (by 12.1%), “press, books, other sales in specialized stores” (by 10.8%). The increase was also recorded, among others, in: “pharmaceuticals, cosmetics, orthopedic equipment” (by 8.8%), other sales (by 8.1%), textiles, clothing and footwear (by 4.9%), motor vehicles, motorcycles, parts (by 4.5%).

However, the decrease was recorded in the sales of solid, liquid and gas fuels (by 5.9%).

Construction and assembly production (at current prices) in November 2019 was by 12.0% smaller than a year before

Retail sales (at current prices) in trade and non-trade enterprises in November 2019 was by 9.2% larger than in November 2018

In January–November 2019, as compared to the corresponding period of 2018, the retail sales went up by 8.4%.

Wholesale in trade enterprises in November 2019 (at current prices) was by 0.2% smaller as compared to the previous month and by 1.7% higher as compared to November 2018, and in wholesale enterprises it was higher by 0.3% and lower by 0.4%, respectively.

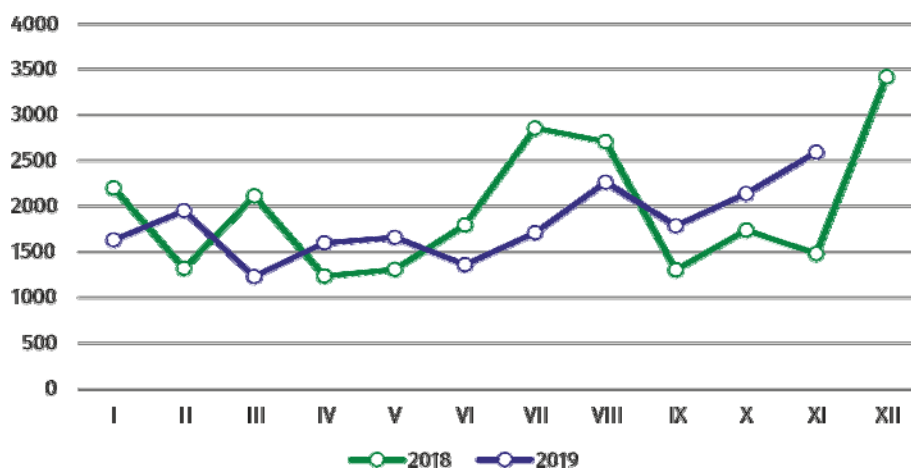
In January–November 2019, wholesale in trade units was by 5.7% higher than a year before, while in wholesale enterprises it was higher by 2.7%.

Housing construction¹

According to preliminary data, 2588 dwellings were completed in Warszawa in November 2019, i.e. by 75.1% more than a year before.

In January–November 2019, 19885 dwellings were completed (by 0.7% less than in the corresponding period of 2018), and in Mazowieckie Voivodship 39188 dwellings, i.e. by 9.8% more than in January–November 2018. The drop in the number of dwellings completed was recorded in municipal construction from 68 to 12, i.e. by 82.4% less, in private construction from 584 to 500, i.e. by 14.4% less and in construction for sale or rent from 19170 to 19002 dwellings, i.e. by 0.9% less. Whereas the increase was recorded in company construction from 1 to 18 dwellings and in cooperative construction from 138 to 353, i.e. by 155.8% more.

Chart 4. Dwellings completed



In January–November 2019, the construction began in 21062 dwellings (by 8.5% less than in the corresponding period of 2018), of which: 19747 in construction for sale or rent, 847 in private construction, 253 in cooperative construction, 215 in dwellings built by public building societies.

In January–November 2019, the number of dwellings for which permits have been granted or which have been registered with a construction project amounted to 20037 (by 11.7% less than in the corresponding period of 2018), of which 567 dwellings buildings built by private investors.

The average useful floor area of a dwelling completed in January–November 2019, amounted to 59.5 m² and decreased compared to the corresponding period of 2018 by 0.7 m². In private construction, the average useful floor area of dwellings amounted to 193.7 m² (by 0.9 m² more than in the corresponding period of 2018), in cooperative construction – 57.5 m², in construction for sale or rent – 56.1 m² (by 0.1 m² fewer), in municipal construction – by 40.8 m² (by 11.3 m² fewer), in company construction – 34.1 m².

Wholesale (at current prices) in trade enterprises was by 1.7% higher than a year before

In January–November 2019, the construction began in 21062 dwellings, i.e. by 8.5% less than in the corresponding period of the previous year

¹ Reporting data – may change after preparing quarterly reports.

Prepared by:

**Mazovian Centre for Regional Surveys
Statistical Office in Warszawa
Małgorzata Bieñkowska
Joanna Podolska**

Tel: (+48 22) 464 21 96, 464 20 96

e-mail: m.bienkowska@stat.gov.pl

e-mail: j.podolska@stat.gov.pl

Issued by:

**Statistical Information Centre
Marcin Kałuski**

Tel: (+48 22) 464 20 91

e-mail: m.kaluski@stat.gov.pl

Press office

Tel.: (+48 22) 464 20 91

e-mail: m.kaluski@stat.gov.pl



warszawa.stat.gov.pl/en/



[@Warszawa_STAT](https://twitter.com/Warszawa_STAT)

Related information

[Communication and Announcements](#)

Data available in databases

[Local Data Bank → Labour market](#)

Terms used in official statistics

[Registered unemployed persons](#)

[Registered unemployment rate](#)

[Average paid employment](#)

[Average monthly gross wages and salaries](#)

[Dwellings completed](#)

[Gross turnover profitability indicator](#)

[Net turnover profitability indicator](#)

