

Statistics of Warszawa No. 6/2019

26th July 2019

↑ 118.7

Indices of sold production
of construction y/y

In June 2019, the average employment in the enterprise sector was by 1.9% higher as compared to the previous year. The number of registered unemployed persons was lower than in the previous month and in the previous year. The average monthly gross wages and salaries in the enterprise sector increased by 5.3% in annual terms. As compared to June 2018, the increase was recorded in sold production of industry and sold production of construction. Retail sales increased, while wholesale decreased compared to the previous year. In June this year, more dwellings were completed than a year earlier.

In June 2019, 26.5% less dwellings were completed than a year before

Average paid employment

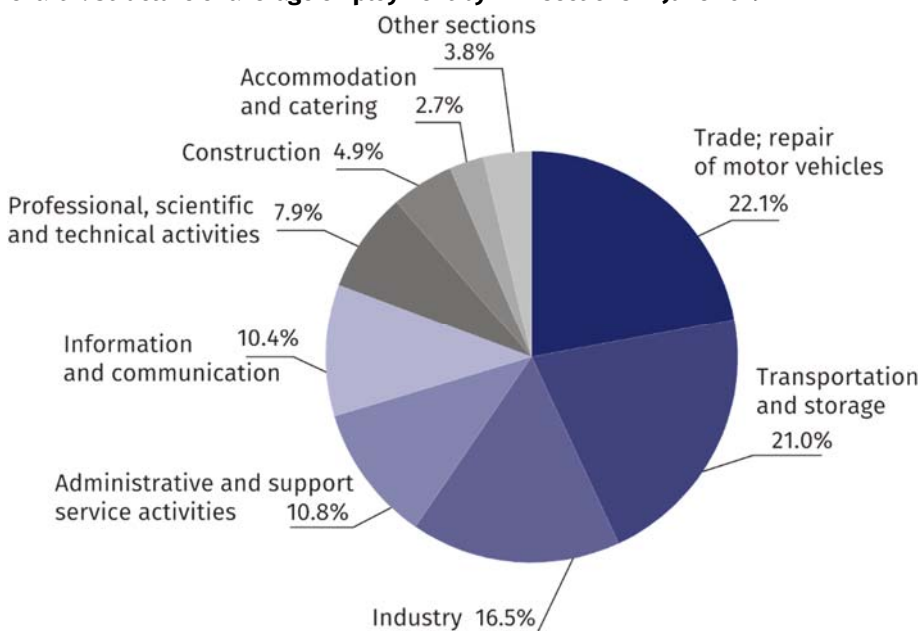
Average employment in the enterprise sector in June 2019 amounted to 1079.4 thousand persons and was by 0.2 thousand persons higher than in May 2019 and by 19.9 thousand persons, i.e. by 1.9% higher than in June 2018.

Compared to May 2019, an increase in the average employment was recorded in the following sections: real estate activities (by 1.5%), accommodation and catering (by 1.0%), arts, entertainment and recreation (by 0.4%), industry and transportation and storage (by 0.3% each), trade; repair of motor vehicles as well as professional scientific and technical activities (by 0.1% each).

Whereas a decrease in the average employment was recorded in the following sections: construction (by 1.8%), administrative and support service activities (by 0.9%), information and communication (by 0.1%).

Average employment in the enterprise sector in June 2019 was by 1.9% higher than a year before

Chart 1. Structure of average employment by PKD sections in June 2019



In comparison to June 2018, an increase in the average employment was recorded in the following sections: arts, entertainment and recreation (by 10.0%), real estate activities (by 8.0%), professional, scientific and technical activities (by 7.2%), trade; repair of motor vehicles (by 4.6%), transportation and storage (by 3.8%), accommodation and catering (by 0.8%), information and communication (by 0.2%).

A decrease in the average employment was recorded in the following sections: industry (by 2.6%), administrative and support service activities (by 2.0%), construction (by 1.4%).

Registered unemployment

At the end of June 2019, the number of registered unemployed persons amounted to 18563 and was by 361 persons, i.e. by 1.9% smaller than at the end of May 2019 and by 4229 persons, i.e. by 18.6% smaller than in the corresponding period of 2018.

The number of registered unemployed women amounted to 9237, which accounted for 49.8% of the total unemployed (a month before 49.6%, and a year before 50.6%) and 13.9% of unemployed women in Mazowieckie Voivodship. As compared to May 2019, the number of unemployed women decreased by 142 persons, i.e. by 1.5%, and compared to June 2018 it decreased by 2287 persons, i.e. by 19.8%.

The registered unemployment rate amounted to 1.4% (as in the previous month, and 1.7% in the previous year), the average in Mazowieckie Voivodship was 4.5% (a month before 4.6%, and 5.0% a year before), while the national average was 5.3% (5.4% a month before, and 5.8% a year before).

In June 2019, there were 2389 unemployed persons registered in labour offices (2601 in May 2019, and 2706 in June 2018). Registered unemployed persons accounted for 20.3% of the total registered unemployed in the voivodship.

The number of persons registering for the first time amounted to 651 (a month before 718), which accounted for 27.2% of the total unemployed who registered in June 2019 and 25.0% of persons registering for the first time in the voivodship. The share of persons terminated due to company reasons among unemployed persons registered in June 2019 amounted to 3.2% (4.4% in Mazowieckie Voivodship), 1.9% a month before and 2.4% a year before.

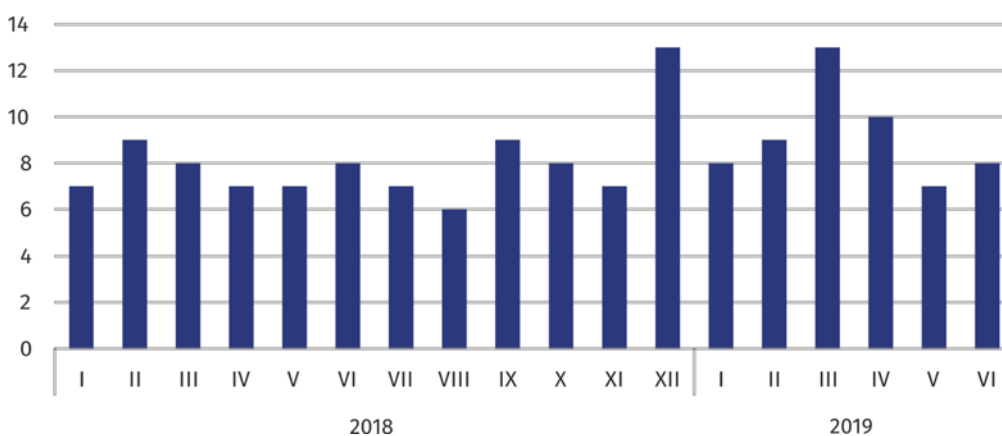
In June 2019, 2750 persons were removed from unemployment rolls (2871 in May 2019, and 3320 in June 2018), which accounted for 18.1% of unemployed persons removed from unemployment rolls in Mazowieckie Voivodship. Out of unemployed persons removed from unemployment rolls, 1275 took up work. Moreover, 845 persons lost their status of the unemployed as a result of not confirming their readiness to take up work. The reason for removing from the register was also voluntarily giving up the status of the unemployed, starting training or traineeship, acquisition of retirement rights of pre-retirement benefit, acquisition of pension rights and other.

There were 15404 persons who were not entitled to the unemployment benefit, i.e. 83.0% of the total unemployed (19332 persons a year before, i.e. 84.8%). Whereas 3159 unemployed persons were entitled to the unemployment benefit.

At the end of June 2019, the number of registered unemployed persons was by 18.6% smaller than a year before, and the unemployment rate was 1.4%

In June 2019, the number of persons removed from unemployment rolls was by 17.2% smaller than a year before

Chart 2. Number of unemployed persons per job offer (as of end of month)



In June 2019, there were 3307 job offers submitted to labour offices, which accounted for 23.9% of job offers in Mazowieckie Voivodship and at the end this month the labour offices had job offers for 2381 persons. At the end of June 2019, there were 8 persons per one job offer (7 a month before, 8 a year before), in Mazowieckie Voivodship 13 persons (as in the previous month and in the previous year) registered as unemployed.

In June 2019, 35.0% less job offers were reported than a year before

Wages and salaries

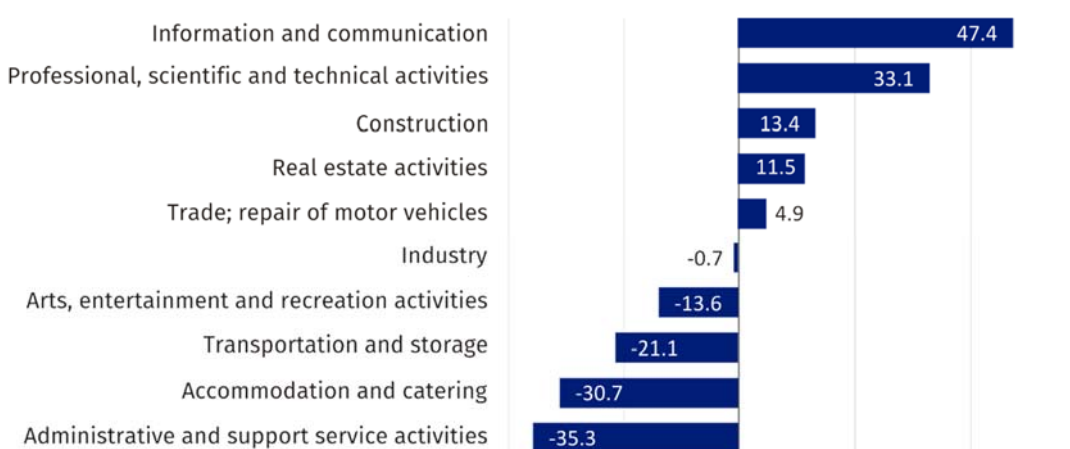
The average monthly gross wages and salaries in the enterprise sector in June 2019 amounted to PLN 6418.62 and were by 0.7% higher as compared to the previous month and by 5.3% higher than in the corresponding period of 2018.

Compared to May 2019, the increase in the average gross wages and salaries was recorded in the following sections: industry (by 6.8%), trade; repair of motor vehicles (by 3.0%), arts, entertainment and recreation (by 2.4%), accommodation and catering (by 0.7%), transportation and storage (by 0.3%).

Whereas the decrease in the average gross wages and salaries was recorded in the following sections: information and communication (by 4.6%), real estate activities (by 4.4%), construction (by 1.5%), administrative and support service activities (by 1.4%), professional, scientific and technical activities (by 1.0%).

Average monthly gross wages and salaries in the enterprise sector in June 2019 amounted to PLN 6418.62 and were by 5.3% higher than in June 2018

Chart 3. Relative deviations (in %) of monthly gross wages and salaries in selected sections from average wages and salaries in enterprise sector in June 2019



Compared to June 2018, an increase in the average gross wages and salaries was recorded in the sections: information and communication (by 10.0%), administrative and support service activities (by 8.9%), arts, entertainment and recreation (by 6.5%), transportation and storage (by 6.0%), accommodation and catering (by 5.8%), construction (by 4.8%), industry (by 4.2%), real estate activities (by 3.1%), professional, scientific and technical activities (by 2.7%), trade; repair of motor vehicles (by 2.3%).

Industry

Sold production of industry in June 2019 amounted (at current prices) to PLN 9825.9 million and was (at constant prices) larger as compared to the corresponding period of 2018 by 1.4%. As compared to June 2018, a decrease by 1.8% was recorded in sold production in manufacturing.

In January–June 2019, sold production of industry amounted to PLN 64612.8 million (at current prices) and was (at constant prices) higher by 4.6% than in the corresponding period of 2018. Production in manufacturing recorded a 5.6% increase.

Among divisions included in manufacturing, the sales increase was recorded, among others, in: manufacture of computer, electronic and optical products (by 39.4%), manufacture of chemicals and chemical products (by 30.5%), manufacture of other transport equipment (by 26.9%), manufacture of beverages (by 19.1%), manufacture of machinery and equipment n.e.c. (by 17.8%), printing and reproduction of recorded media (by 14.4%), manufacture of rubber and plastic products (by 10.5%).

The decrease in sales was recorded, among others, in: other manufacturing (by 36.5%), manufacture of coke and refined petroleum products (by 33.5%), manufacture of products of wood, cork, straw and wicker (by 15.9%), manufacture of furniture (by 13.8%), manufacture of

Sold production in manufacturing (at constant prices) in June 2019 was by 1.8% smaller than a year before

motor vehicles, trailers and semi-trailers (by 9.9%), manufacture of leather and related products (by 8.6%), manufacture of pharmaceutical products (by 6.5%), manufacture of paper and paper products (by 5.6%).

Labour productivity in industry, measured by the value of sold production per employed person in January–June 2019 amounted to PLN 363.1 thousand (at current prices) and was – at constant prices – by 7.5% higher than a year before.

Construction

Sold production of construction in June 2019 amounted (at current prices) to PLN 4704.4 million and compared to May 2019 was larger by 4.6%, and compared to the corresponding period of the previous year, it increased by 18.7%.

In January–June 2019, sold production of construction reached the value of PLN 24934.0 million, i.e. by 22.0% larger than in the corresponding period of 2018.

Construction and assembly production in June 2019 was at the level of PLN 1258.1 million (at current prices) and accounted for 26.7% of sold production of construction. Compared to the previous month, construction and assembly production increased by 3.9%, and compared to June 2018, it was higher by 3.5%.

In January–June 2019, construction and assembly production was at the level of PLN 6135.4 million and accounted for 24.6% of sold production of construction (29.6% a year before). As compared to the corresponding period of the previous year, construction and assembly production was larger by 1.5%.

The increase in production in relation to the corresponding period of 2018 occurred in entities conducting activity in civil engineering (by 3.3%), in companies carrying out specialized construction activities (by 1.1%); whereas a decrease in entities conducting activity in the field of construction of buildings (by 0.7%).

Labour productivity measured by production per employed person in construction, in June 2019 amounted to PLN 89.5 thousand and was by 6.5% higher than a month before and by 20.3% higher than in June 2018.

Construction and assembly production (at current prices) in June 2019 was by 3.5% larger than a year before

Trade

Retail sales in trade and non-trade enterprises in June 2019 (at current prices) were by 4.0% larger than in May 2019 and by 6.3% higher compared to June 2018.

Compared to May 2019, larger, among others, were: other retail sales in non-specialized stores (by 26.2%), sales of textiles, clothing and footwear (by 23.5%), sales of motor vehicles, motorcycles, parts (8.8%), sales of press, books, other sales in specialized stores (by 4.8%).

However, the decrease was recorded, among others, in: other sales (by 5.0%), sales conducted by mail order houses (by 2.0%).

As compared to June 2018, the sales were higher, among others, in the groups: „retail sales conducted by mail order houses” (by 56.3%), „other retail sales in non-specialized stores” (by 32.2%), “textiles, clothing, footwear” (by 14.2%), “furniture, electronics and household appliances” (by 13.7%). The increase was also recorded in the sales of: motor vehicles, motorcycles, parts (by 8.3%), press, books, other sales in specialized stores (by 6.4%), sales of food, beverages and tobacco (by 3.2%).

However, the decrease was recorded in other sales (by 9.5%) and in the sales of solid, liquid and gas fuels (by 3.5%).

In January–June 2019, as compared to the corresponding period of 2018, the retail sales went up by 8.7%.

Wholesale in trade enterprises in June 2019 (in current prices) was by 3.3% smaller as compared to the previous month and by 1.9% lower as compared to June 2018, and in wholesale enterprises it was lower by 5.6% and by 4.8%, respectively.

In January–June 2019, wholesale in trade units was by 9.5% higher than a year before, while in wholesale enterprises it was higher by 6.7%.

Retail sales (at current prices) realized by trade and non-trade enterprises in June 2019 was by 6.3% larger than in June 2018

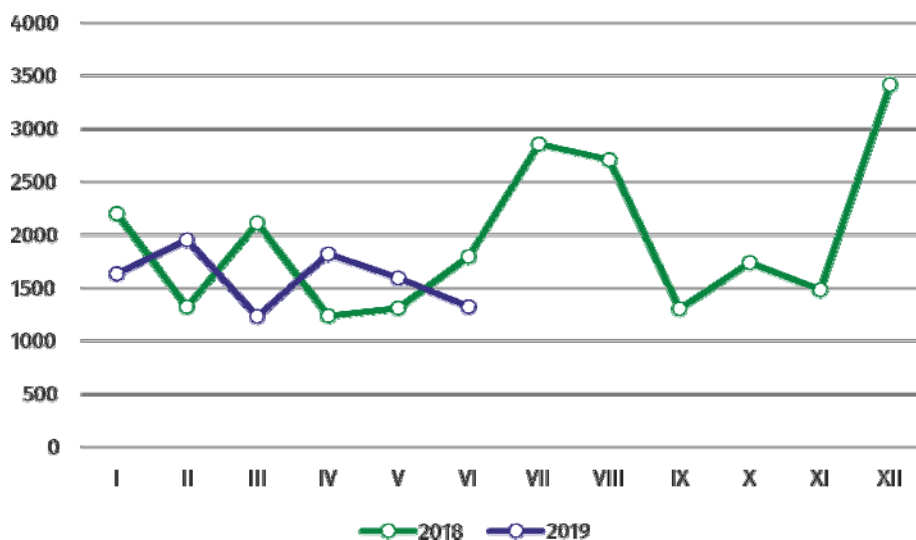
Wholesale (at current prices) in trade enterprises was by 1.9% lower than a year before

Housing construction¹

According to preliminary data, 1316 dwellings were completed in Warszawa in June 2019, i.e. by 26.5% less than a year before.

In January–June 2019, 9526 dwellings were completed (by 4.3% less than in the corresponding period of 2018), and in Mazowieckie Voivodship 19638 dwellings, i.e. by 8.1% more than in January–June 2018. The drop in the number of dwellings completed was recorded in construction for sale or rent from 9652 to 8901, i.e. by 7.8% less. Whereas the increase was recorded in private construction from 300 to 356 dwellings, i.e. by 18.7% more. Moreover, in January–June 2019, 251 dwellings were completed by cooperatives and 18 in company construction.

Chart 4. Dwellings completed



In January–June 2019, the construction began in 9566 dwellings (by 27.9% less than in the corresponding period of 2018), of which: 8974 in construction for sale or rent, 295 in private construction, 215 in dwellings built by public building societies, 82 in cooperative construction.

In January–June 2019, the number of dwellings for which permits have been granted or which have been registered with a construction project amounted to 10422 (by 20.2% less than in the corresponding period of 2018), of which 312 dwellings buildings built by private investors.

The average useful floor area of a dwelling completed in January–June 2019, amounted to 61.6 m² and decreased compared to the corresponding period of 2018 by 0.3 m². In private construction, the average useful floor area of dwellings amounted to 178.3 m² (by 22.3 m² fewer than in the corresponding period of 2018), in construction for sale or rent – 57.3 m² (by 0.3 m² fewer), in cooperatives – 53.3 m², in company construction – 34.1 m².

Entities of the national economy²

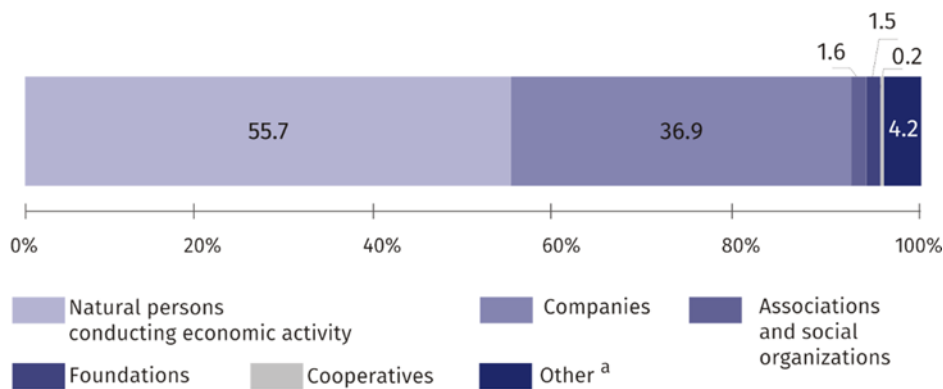
At the end of June 2019, there were 445225 entities of the national economy registered in the REGON register in Warszawa, which accounted for 53.2% of the total in Mazowieckie Voivodship. Compared with March 2019, the number of entities of the national economy increased by 5249 (i.e. by 1.2%), and compared to June 2018 increased by 1922 (i.e. by 0.4%).

In January–June 2019, the construction began in 9566 dwellings, i.e. by 27.9% less than in the corresponding period of the previous year

¹ Reporting data – may change after preparing quarterly reports.

² Excluding persons tending private farms in agriculture.

Chart 5. Structure of entities of the national economy by legal status in 2019
As of 30 June



^a Of which state owned enterprises.

In the capital, in June 2019, the most numerous were entities dealing with trade; repair of motor vehicles – 85954 (19.3%), professional, scientific and technical activities – 85743 (19.3%), information and communication – 42354 (9.5%), construction – 32349 (7.3%), real estate activities – 27214 (6.1%), other service activities – 26622 (6.0%), manufacturing – 23950 (5.4%).

Compared to March 2019, the number of entities increased among others in the sections: information and communication (by 2.3%), agriculture, forestry and fishing (by 2.0%), accommodation and catering, professional, scientific and technical activities (by 1.5% each), other service activities (by 1.4%), construction, real estate activities as well as arts, entertainment and recreation (by 1.3% each).

In comparison with June 2018, the number of entities increased in the sections: electricity, gas, steam and air conditioning supply (by 9.2%), information and communication (by 7.1%), education (by 5.8%), human health and social work activities (by 5.7%), administrative and support service activities (by 5.5%), accommodation and catering (by 4.3%), real estate activities (by 3.6%), professional, scientific and technical activities (by 3.4%).

Whereas the decrease in the number of entities was recorded, for example, in the sections: trade; repair of motor vehicles (by 7.2%), mining and quarrying (by 6.8%), manufacturing (by 5.9%), agriculture, forestry and fishing (by 4.6%), water supply; sewerage, waste management and remediation activities (by 3.1%), other service activities (by 3.0%).

At the end of June 2019, the most numerous group of entities by kind of conducted activity represented units dealing with trade; repair of motor vehicles (85954)

Prepared by:

Mazovian Centre for Regional Surveys
Statistical Office in Warszawa
Małgorzata Bieńkowska
Joanna Podolska
Tel: +48 22 464 21 96, + 48 22 464 20 96
e-mail: m.bienkowska@stat.gov.pl
e-mail: j.podolska@stat.gov.pl

Issued by:

Statistical Information Centre
Marcin Kałuski
Tel: +48 22 464 20 91
e-mail: m.kaluski@stat.gov.pl

Translated by:

Agnieszka Gromek-Żukowska
Tel: +48 22 464 22 42
e-mail: a.gromek-zukowska@stat.gov.pl

Press office

tel.: + 48 22 464 20 91

e-mail: m.kaluski@stat.gov.pl



warszawa.stat.gov.pl/en



[@Warszawa_STAT](https://twitter.com/Warszawa_STAT)

Related information

[Communications and Announcements](#)

Data available in databases

[Local Data Bank → Labour market](#)

Terms used in official statistics

[Registered unemployed persons](#)

[Registered unemployment rate](#)

[Average paid employment](#)

[Average monthly gross wages and salaries](#)

[Dwellings completed](#)

[Gross turnover profitability rate](#)

[Net turnover profitability rate](#)

