

# STATISTICS OF WARSAW



Statistical Office in Warsaw

1 Sierpnia 21, 02-134 Warsaw; tel. 22 464 23 15 fax 22 846 76 67

e-mail: [InformatoriumUSWAW@stat.gov.pl](mailto:InformatoriumUSWAW@stat.gov.pl) <http://warszawa.stat.gov.pl>

## LABOUR MARKET

**Average employment** in Warsaw in enterprise sector in July 2016 amounted to 996.0 thousand people and was by 6.0 thousand people, i.e. 0.6% higher than in June 2016, and by 31.7 thousand people, i.e. 3.3% higher compared with July 2015.

At the end of July 2016 the number of **registered unemployed persons** equated to 36938 and was lower by 744 persons, i.e. 2.0% than at the end of June 2016 and by 7326 persons, i.e. 16.6% lower than during the similar period of the year 2015.

The number of **unemployed women** amounted to 18464 which constituted 50.0% of all unemployed residents (in the previous month 49.3% and in the previous year 48.6%).

**The registered unemployment rate** equaled 3.1% (in the previous month 3.2% and in the previous year 3.8%).

## TRADE

**Retail sales** in trade and non-trade enterprises in July 2016 (in current prices) was by 1.9% lower than in June 2016 and by 0.5% lower compared with July 2015.

**Wholesale** in trade enterprises in July 2016 (in current prices) decreased by 10.5% as compared with the previous month and increased by 10.4% as compared with July 2015; in wholesale enterprises it was lower by 8.9% and higher by 4.6% respectively.

## INDUSTRY AND CONSTRUCTION

**Sold production of industry** in July 2016 amounted to (in current prices) 7634.6 mln zł (1747.7 mln EUR<sup>1</sup>) and was lower by 6.5% (in constant prices) compared with July 2015.

In January to July 2016 sold production of industry reached 60621.8 mln zł (13877.3 mln EUR<sup>1</sup>) (in current prices) and was (in constant prices) higher by 3.0% compared with the same period of 2015.

**Sold production of construction** in July 2016 stood at (in current prices) 3352.1 mln zł (767.4 mln EUR<sup>1</sup>) and compared with June 2016 increased by 3.8%, and compared with the same period of the previous year it was by 7.5% higher.

In January–July 2016 sold production of construction reached 21066.2 mln zł (4822.4 mln EUR<sup>1</sup>), i.e. by 10.7% higher than over the same period of 2015.

## WAGES AND SALARIES

**Average monthly gross wages and salaries** in enterprise sector in July 2016 amounted to 5429.69 zł (1242.9 EUR<sup>1</sup>) and were 0.3% higher than in June 2016, and 3.1% higher than in the similar period of 2015.

## HOUSING CONSTRUCTION

According to preliminary data, 11439 dwellings were completed in Warsaw in January–July 2016 (71.2% more than in the same period of 2015).

In January–July 2016 construction of 11972 dwellings was initiated (19.1% more than during the similar period of 2015).

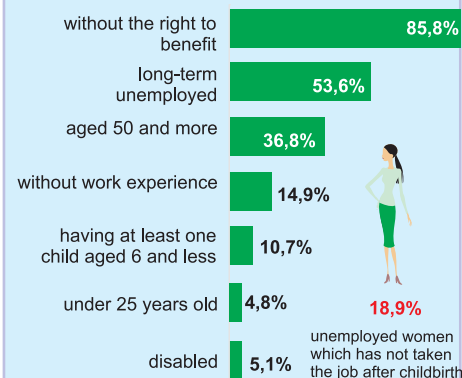
<sup>1</sup> Average monthly exchange rate for the end of July 2016 as published by the National Bank of Poland 1 EUR = 4.3684 zł

# No. 7

## August 2016

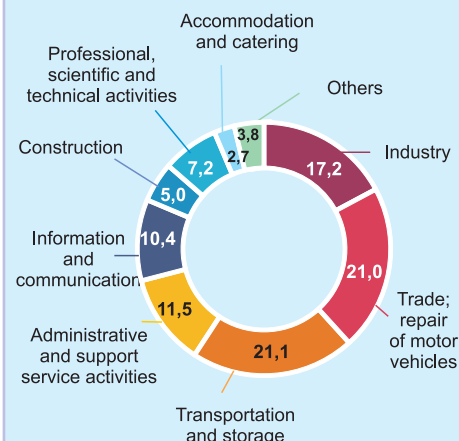
### Registered unemployed persons in July 2016

36 938 ↓ 16,6% ↓ decreased compared to July 2015

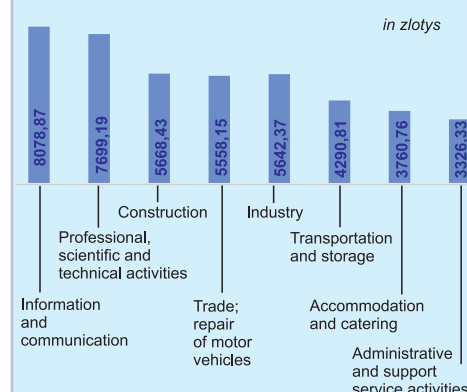


6 258 job offers (during a month)  
4 269 job offers (at the end of month)  
9 unemployed persons per 1 job offer

### Structure of average employment by section in July 2016



### Average monthly gross wages and salaries by sections in July 2016



*Dissemination of statistical information in the Statistical Office in Warsaw is conducted by*

MAZOVIAN CENTRE  
FOR REGIONAL SURVEYS

which includes:

Statistical Information Centre and Library  
ground floor

tel./fax 22 846-78-32

tel. 22 464-23-20, 22 464-20-85

e-mail: informatoriumUSWAW@stat.gov.pl

Statistical data of public statistics concerning Warsaw and Mazowieckie are disseminated through:

- direct customer service, by telephone and in writing;
- processing of individual orders;
- statistical publications (monthlies, quarterlies, yearbooks and one-off publications);
- short news bulletins and communiqués;

Statistical Information Centre is open for inquires:

from 7.30 to 18.00 on Mondays

from 7.30 to 15.00 from Tuesday to Friday

in the Statistical Office in Warsaw and its branches.

Available on the spot in the Statistical Information Centre:

- current communiqués of the Central Statistical Office and information of the Statistical Office on basic figures and indicators;
- publications of the Central Statistical Office and Statistical Office, such as: yearbooks, bulletins, trade publications, methodological booklets, classifications and the like;
- information on new releases and publication plan of statistical offices and the Central Statistical Office;
- moreover Library of Statistical Office offers access to Official Journals of the Central Statistical Office as well as Journals of Laws and Monitor Polski.

**TRANSPORT**

The importance of public transport and road infrastructure for the inhabitants of a fast growing city such as Warsaw cannot be overstated. Therefore there are several ongoing projects aimed at modernizing and expanding these elements of the public space.

At the end of 2015 in Warsaw there were 1120.0 thousand registered passenger cars; 642 per 1000 population (in 2014 – 614). Moreover, there were 169.8 thousand lorries, 41.1 thousand motorcycles, 9.3 thousand special vehicles and 5.4 thousand buses registered in the capital city. In 2015 the number of newly registered road vehicles and tractors amounted to 129.6 thousand, out of which 83.8% were passenger cars.

In 2015 in the capital city the total length of permanent daytime tram lines was 377 km (18 km less than in 2014). The length of bus lines increased by 559 km (3517 km), metro line increased by 6 km (29 km) and urban rapid rail decreased by 30 km (117 km). Due to the high traffic intensity in the city and with the objective of improving the flow of passengers on urban transportation and taxi services, bus lanes were delimited on certain streets. At the end of 2015, the same as a year before, their total length was 47 km.

The number of trams in service within the city's administrative borders was 838 (by 6.5% more than in 2014), while the number of buses, both in the city and in certain suburban gminas, was 1499 (by 0.1% more). On average, the passengers used urban transportation services over 3.0 million times per day. At the end of 2015 the number of stationary and on board ticket machines was 2202 (a 7.3% growth in the case of on board ticket machines). The number of Park and Ride (P&R) car parks was 14 (in 2014 – 13), the number of parking places for passenger cars rose by 16.4%.

Warsaw inhabitants could also use 7030 public bike racks, which offered 14060 places. There were 11.1 thousand taxis on the street of Warsaw in 2015 (by 5.8% more than in a previous year). Also, there was an increase in the number of bicycle stations and bicycles within the Public Bike System (by 0.5% and 1.9% respectively).

In comparison with 2014 Warsaw Fryderyk Chopin Airport registered a smaller aircraft traffic intensity (by 0.9%). The inflow and the outflow of passengers to Warsaw increased by 6.5%. Among the total number of passengers 47.8% travelled on board of Polish airplanes (a year before – 52.1%). The capital city's airport registered on average 390 takeoffs and landings per day. The number of takeoffs and landings in domestic traffic decreased by 7.8%, whereas in international traffic it increased by 1.1%.

**Registered passenger cars per 1000 population by districts in 2015**

As of 31 XII

