

Entities of the national economy in the REGON register in Mazowieckie Voivodship. As of the end of 2023.

15 February 2024

↑ 104.4

Indices of entities of the national economy y/y

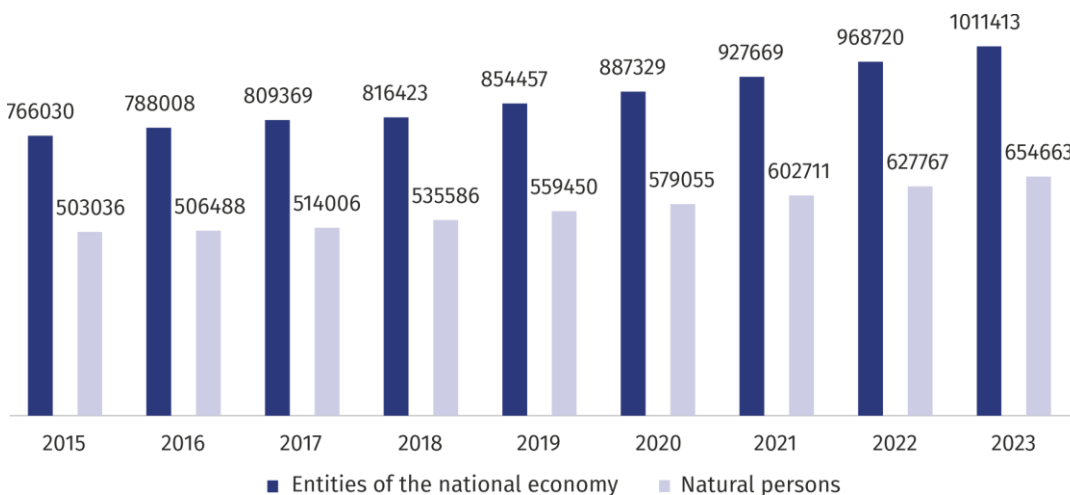
At the end of 2023, there were 1011413 entities of the national economy registered, i.e. by 4.4% more than in the previous year. More than half of the units (54.7%) had their seat in m.st. Warszawa. The largest number of entities (19.5%) declared that they operated in trade; repair of motor vehicles, however the highest increase as compared to 2022 occurred in the section of information and communication (by 11.4%).

General characteristics of entities of the national economy

At the end of December 2023, there were 1011413 entities registered in the REGON register in Mazowieckie Voivodship. These entities constituted 19.6% of the total entities registered in the country. Compared to the previous year, the number of entities in Mazowieckie Voivodship increased by 4.4%, and compared to 2015 it was higher by 32.0%.

Every fifth entity of the national economy in the REGON register was registered in Mazowieckie Voivodship

Chart 1. Entities of the national economy and natural persons in the REGON register

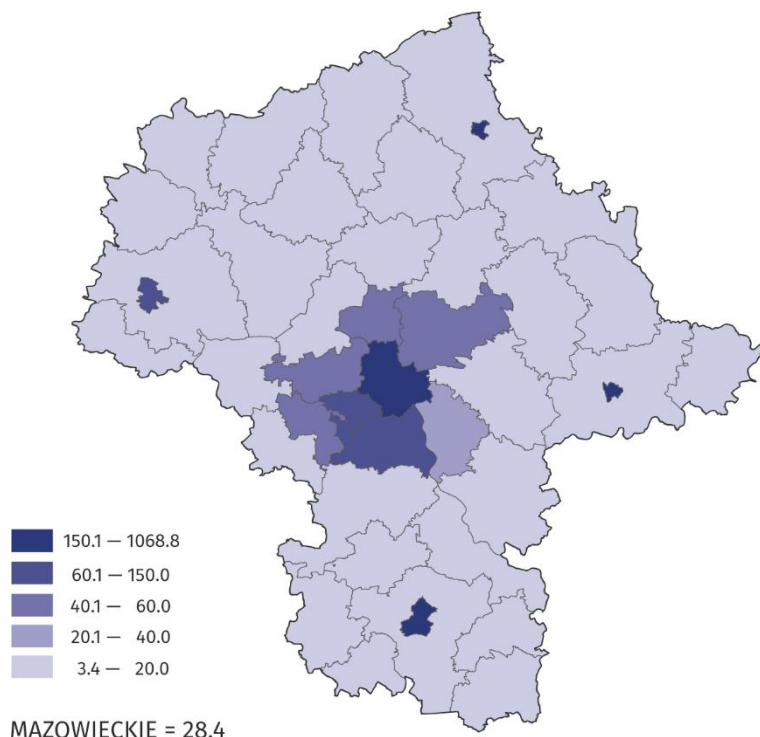


In territorial terms, the largest number of entities registered were in m.st. Warszawa (552771), followed by the powiats: piaseczyński (44002), wołomiński (39966), pruszkowski (35163), and in Radom (26152). While the smallest number of registered entities was in the powiats: łosicki (2637), zwolenński (2752), lipski (2972), and żuromiński (3026). The largest annual increase in entities was observed in m.st. Warszawa (by 5.2%), in piaseczyński and warszawski zachodni powiat (5.1% each) and grodziski powiat (by 4.7%). No decline was recorded in any district.

The highest concentration of entities in the voivodeship occurred in the capital, where there were 1,068.8 entities per 1 km², followed by Siedlce (293.8) and Radom (233.9). Excluding cities with powiat status, the highest indicator was in pruszkowski powiat (142.7), while the lowest was in łosicki powiat (3.4).

The largest number of entities among the powiats of Mazowieckie Voivodship was in piaseczyński powiat, the smallest in łosicki powiat

Map 1. Entities of the national economy per 1 km² by powiats in 2023



The number of registered units per 1 km² was 16 times higher in warszawski stoleczny region than in mazowiecki regionalny

Entities of the national economy by kind of conducted activity

In Mazowieckie Voivodship at the end of December 2023, the most numerous group of entities represented units conducting activity in the field of: trade; repair of motor vehicles – 196762, professional, scientific and technical activity – 155670, construction – 105949 and information and communication – 93145.

Compared to 2022, the number of entities increased, among others, in the sections: information and communication (by 11.4%), households employing workers and producing products for their own needs (by 10.0%), electricity, gas, steam and air conditioning supply (by 9.75), administrative and support service activities (by 6.6%). A decrease was recorded in the sections of: activities of extraterritorial organisations and bodies, as well as in water supply; sewerage, waste management and remediation activities (by 1.3% and 0.3%, respectively).

Every fifth entity conducted activity in the field of trade; repair of motor vehicles

Chart 2. Share of entities of the national economy by selected sections of PKD in 2023



Entities of the national economy by legal status

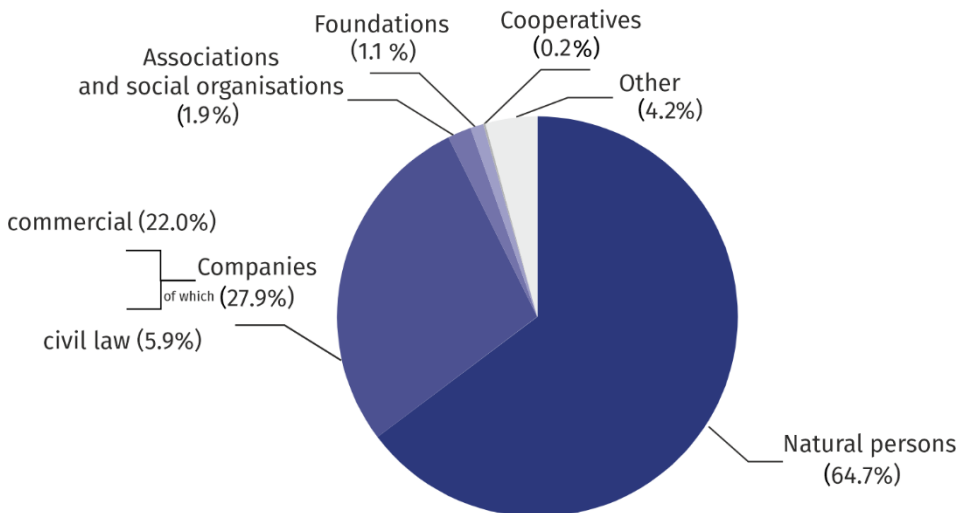
The vast majority, that is 946573, i.e. 93.6% of the total number of entities were private sector entities. Among entities of this sector, 69.2% represented natural persons conducting economic activity, primarily: in trade; repair of motor vehicles (121356 entities), professional, scientific and technical activities (112167 entities) and in construction (76495).

There were 12644 public sector entities registered in the REGON register, which belonged mainly to the education section (4740 entities) and real estate activities (2661 entities).

The REGON register also includes entities for which the information on the form of ownership does not exist.

Public sector entities accounted for only 1.3% of total units in the Voivodship

Chart 3. Structure of entities of the national economy by legal status in 2023



At the end of December 2023, there were 654663 natural persons conducting economic activity registered in the REGON register, i.e. by 4.3% more than in the previous year.

In the territorial cross-section, the highest increase took place in m.st. Warszawa (by 5.6%) and in the powiats: warszawski zachodni (5.3%), piaseczyński (by 5.1%), płocki (by 5.1%), grodziski (by 4.7%) and wołomiński (by 4.4%). The decline in the number of natural persons was not recorded in any district. The highest share of natural persons in the total number of entities was in the following powiats: zwoleński (84.2%), radomski (84.1%), ostrołęcki (82.8%) and żuromiński (81.9%), and the lowest in m.st. Warszawa (54.9%), piaseczyński powiat (67.6%) and in Płock (69.8%).

The largest number of natural persons among all the powiats of the Voivodship was in wołomiński powiat, the least in łosicki powiat

The number of registered commercial companies (222890) accounted for 33.5% of total commercial companies registered in the country. Over the year their number in the Voivodship increased by 6.1%, and the largest increase was recorded in the powiats: węgrowski (by 29.5%), przysuski (by 21.8%), ostrołęcki (by 12.9%), wyszkowski (by 11.9%) and szydłowiecki (by 11.2%). The decrease in the number of commercial companies was not recorded in any powiat.

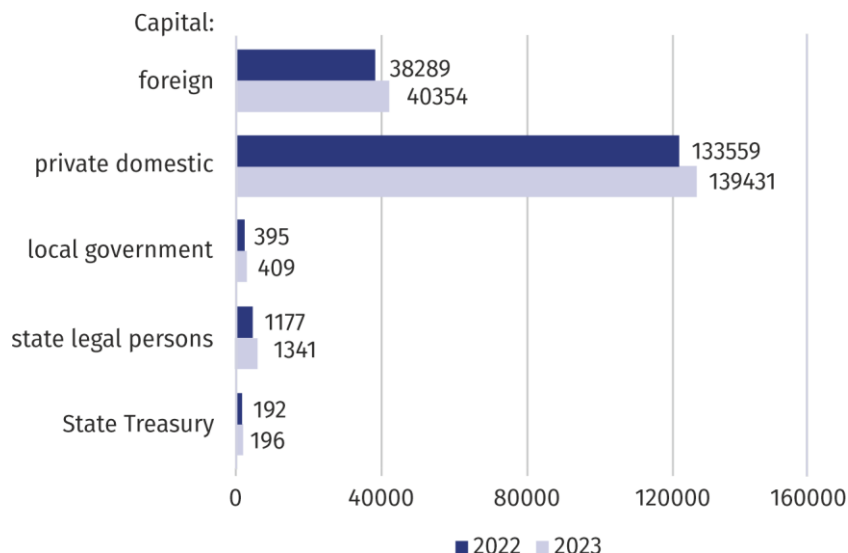
Activity of commercial companies concentrated primarily in the sections: trade; repair of motor vehicles (22.8%), professional, scientific and technical activities (16.1%), construction (10.9%), industry (9.2%), and information and communication (9.1%).

The vast majority of commercial companies were capital commercial companies (91.5%) and they were mainly limited liability companies (89.4%). Out of partnerships (8.5%) the most popular legal status were limited partnerships (4.6% of total commercial companies) and unlimited partnerships (3.0%).

Among commercial companies by type of capital, the highest increase compared to 2022 (by 13.9%) was recorded in companies with domestic private capital.

Among commercial companies (according to legal status), limited liability companies prevailed.

Chart 4. Commercial companies by type of capital



At the end of December 2023, the number of registered commercial companies amounted to 59245, i.e. by 12 units more than a year before. The highest increase was recorded in the powiats: żuromiński (by 4.4%), przysuski (by 4.2%), wyszkowski (by 3.5%), legionowski (by 3.4%) and płocki (by 3.2%). Whereas the highest drop was recorded in białobrzeski powiat (by 7.9%). Commercial companies concentrated their activities primarily in the sections: trade; repair of motor vehicles (40.1%), industry (11.6%) and professional, scientific and technical activities (10.3%).

As of 31 December 2023, there were 19262 associations and social organisations registered, which means an increase by 5.7% as compared to the previous year. An increase in the number of associations and social organisations was recorded in all powiats, and the largest one occurred in przasnyski powiat (by 19.2%), gostyniński powiat (by 11.0%), Ostrołęka (by 10.3%), wyszkowski powiat (by 9.8%) and radomski (by 9.7%).

The increase was also recorded in the number of registered foundations (6.4% in annual terms) and at the end of December 2023 it amounted to 10786. The highest increase was recorded in m.st. Warszawa (by 459 foundations), in wołomiński powiat (by 28), in piaseczyński powiat (by 24), in miński and pruszkowski powiats (by 18 and 17 each). The decline in the number of foundations was recorded in sochaczewski and szydłowiecki powiats – 1 each.

There were 1728 cooperatives registered in Mazowieckie Voivodship, i.e. less by 1.9% compared to the previous year. The highest decrease concerned the powiats: przysuski (by 20.0%), żuromiński (by 15.4%) and gostyniński (by 14.3%). The largest increase was recorded in the powiats: szydłowiecki (by 11.1%), sokołowski (by 6.3%), piaseczyński (by 4.5%) and łosicki (by 4.3%). The above legal status was usually chosen by units conducting activity in the field of real estate activities – they accounted for 51.2% of total cooperatives.

At the end of December 2023, 9 state-owned enterprises were registered in the REGON register; their number did not change compared to the previous year. Out of these enterprises, the largest number of units dealt with industry (33.3%).

Entities of the national economy by number of employed persons and sections of PKD

In Mazowieckie Voivodship, entities belonging to the group of micro enterprises (which at the moment of entering the REGON register provided for employment of up to 9 persons) prevailed, and accounted for 97.1% of total registered units.

The share of small entities (with expected number of 10 to 49 employed persons) amounted to 2.3%, and medium-sized enterprises (expected number of 50 to 249 employed persons) and large (250 and more employed persons) amounted to 0.5% and 0.1%, respectively.

More than 97.0% of total entities accounted for micro enterprises (employing up to 9 persons)

Micro enterprises most often conducted activity in the following sections: trade; repair of motor vehicles, professional, scientific and technical activity and construction. In the group of small entities, except for trade; repair of motor vehicles dominated also units dealing with industry, education and construction. Among medium entities, the following sections prevailed: education, industry and trade; repair of motor vehicles. While in the case of large entities, the highest share concerned the following sections: industry, public administration and defence; compulsory social security, as well as trade; repair of motor vehicles.

Table 1. Entities of the national economy by expected number of employed persons

Specification	2022	2023
Total	968720	1011413
9 and less	939241	981983
10-49	23662	23591
50-249	4789	4806
250 and more	1028	1033

Entities of the national economy newly registered and removed from the register

In 2023, there were 80723 new entities of the national economy registered in the REGON register, i.e. by 2.6% more than in the previous year. Natural persons conducting economic activity accounted for 70.9% of total new entities, while the share of companies amounted to 24.5%.

Most new units were created in m.st. Warszawa (46599) and in the following powiats: piaseczyński (3449), wołomiński (3211) and pruszkowski (2374). Whereas the fewest new units were created in the following powiats: lipski and łosicki (by 186 and 217 each, respectively). In other cities with powiat status, the most entities were registered in Radom (1752 units), followed by Płock (929), Siedlce (652) and Ostrołęka (397).

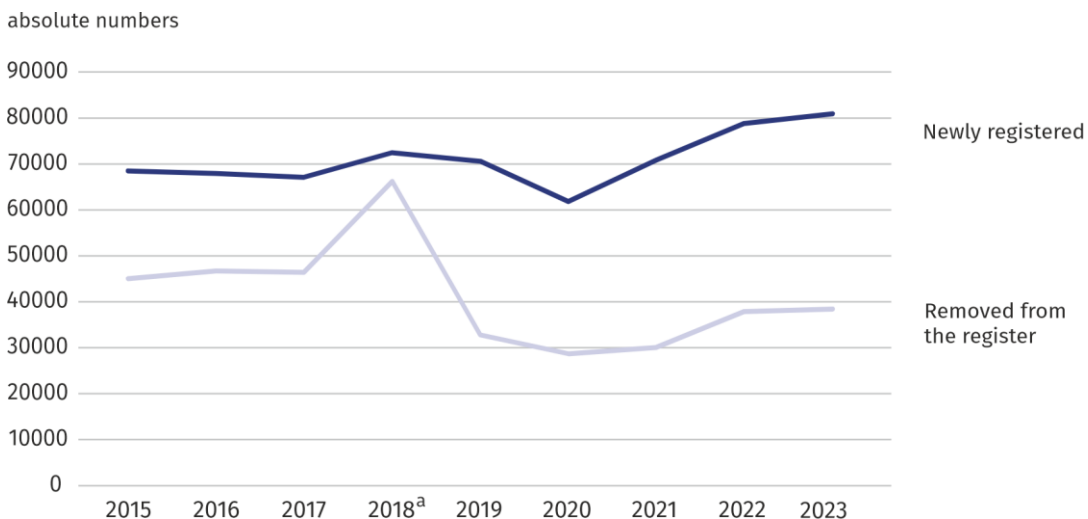
During the year, 38718 entities were removed from the REGON register (by 1.5% more than throughout 2022) and they were mainly natural persons conducting economic activity (79.2%).

Most units were removed from the register in m.st Warszawa (18765), piaseczyński powiat (1799), wołomiński (1696) and in Radom (1295). Whereas the fewest removals were recorded in the following powiats: łosicki (93), lipski (112), and zwoleński (124).

The number of newly entered entities was higher by 2.6% (y/y)

The number of entities removed from the register was higher by 1.5% (y/y)

Chart 5. Entities of the national economy newly registered and removed from the register



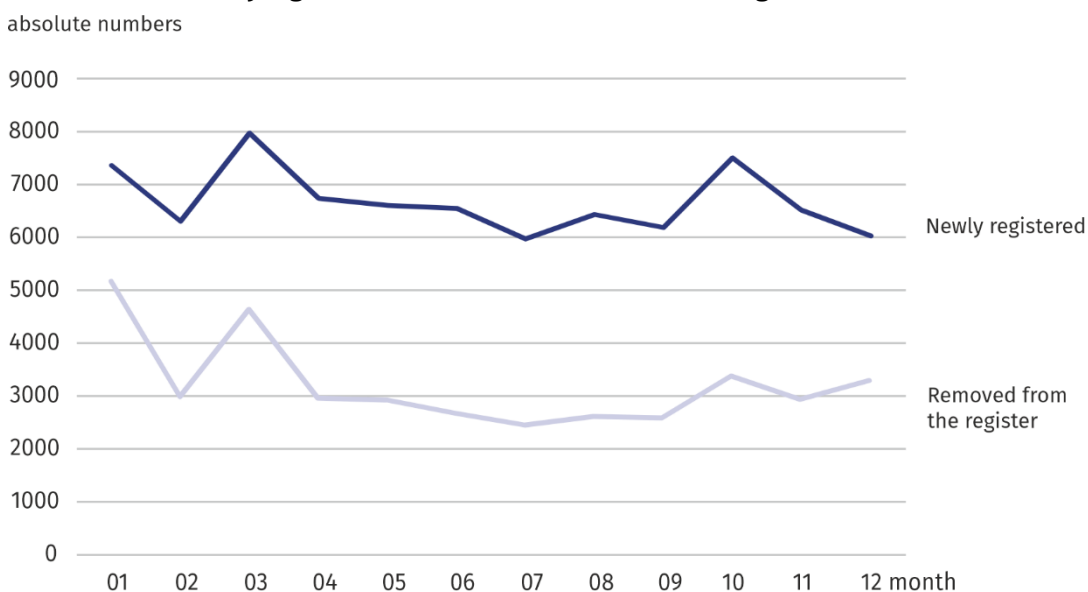
a The increase in the number of entities deregistered in 2018 was affected by the update of the REGON register based on information about deceased persons obtained from the PESEL register and an update based on information from the National Court Register on entities deleted from the National Court Register.

In 2023, the indicator measured by the ratio of the number of units removed from the register to the number of newly registered units in the Voivodship amounted to 48.0%.

The highest value of this indicator was recorded in szymbarkowski powiat (88.9%), ciechanowski powiat (83.8%), Płock (77.8%), Radom (73.9%) and Ostrołęka (72.8%). The lowest value was recorded in m.st. Warszawa (40.3%), in łosicki powiat (42.9%), węgrowski (44.6%), and in sokołowski powiat (48.2%).

In monthly terms, the largest number of new registrations was in March (7997) and October (7539), while the lowest number of new entities were registered in July (6030) and December (6983). The largest number of removals from the REGON register in 2023 occurred at the beginning of the year, i.e. in January (5103), and in March (4591), while the lowest number was observed in July (2489) and September (2620).

Chart 6. Entities newly registered and removed from the REGON register in 2023



In Mazowieckie Voivodship in 2023, there were 48 liquidated entities per every 100 newly registered entities

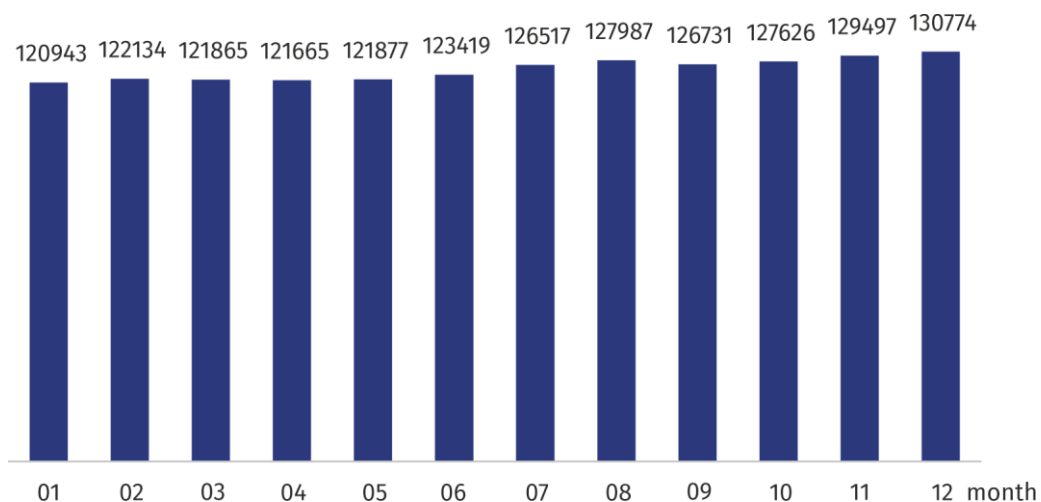
Entities of the national economy with suspended activity

The number of entities with suspended activity per year was higher by 13627 units, i.e. by 11.6%, and at the end of December 2023 and amounted to 130774. The vast majority of these entities (90.0%) were natural persons conducting economic activity.

In monthly terms, the largest number of suspended activity in the REGON register occurred in the last months of the year: in December (130774), November (129497), and the least in January (120943).

The number of entities with suspended activity increased by 11.6% (y/y)

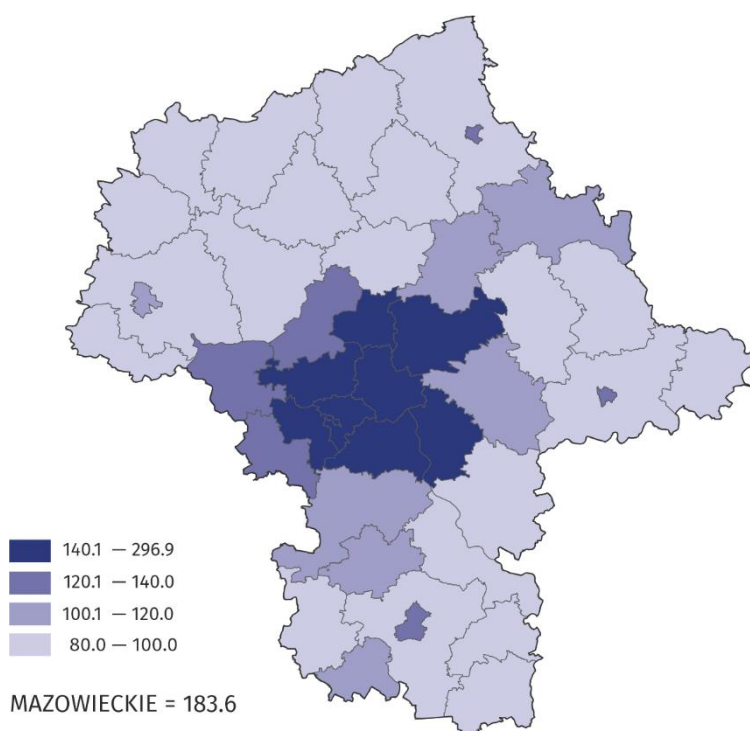
Chart 7. Entities of the national economy with suspended activity in 2023



Entities of the national economy per 1000 population¹

The level of entrepreneurship is indicated by the number of entities per 1000 population living in a given area. In 2023, in Mazowieckie Voivodship there were 183.6 entities of the national economy per 1000 population (175.8 a year earlier).

Map 2. Entities of the national economy per 1000 population in 2023



¹ Population as of 30 June 2023

The highest values of this rate concerned m.st. Warszawa (296.9) and the following powiats: piaseczyński (206.2), pruszkowski (189.5), warszawski zachodni (188.5). While the lowest rates of intensity were recorded in the following powiats: zwoleński (80.0), ostrołęcki (82.6), kozienicki (82.8), żuromiński (84.8).

Among other cities with powiat status in Mazowieckie Voivodship, the highest discussed indicator was recorded in Radom and Ostrołęka (132.8 and 130.1, respectively), followed by Siedlce (124.0) and Płock (115.1).

The territorial distribution of entities confirms that entrepreneurship is developing especially in urbanised areas that have good infrastructure, human capital and are attractive in terms of tourism.

The number of registered entities per 1000 inhabitants was more than twice as high in region warszawski stołeczny than in mazowiecki region (239.8 and 101.9, respectively).

In case of quoting Statistics Poland data, please provide information: "Source of data: Statistics Poland", and in case of publishing calculations made on data published by Statistics Poland, please include the following disclaimer: "Own study based on figures from Statistics Poland".

Prepared by:
Statistical Office in Warszawa

Director Agnieszka Ajdyn
Phone: (+48 22) 464 23 15

Issued by:
Statistical Information Centre

Marcin Kałuski
Phone: (+48 22) 464 20 91

Press office

Phone: (+48 22) 464 20 91

e-mail: m.kaluski@stat.gov.pl

-  www.warszawa.stat.gov.pl/en/
-  [@Warszawa_STAT](https://twitter.com/Warszawa_STAT)
-  [@UrządStatystycznywWarszawie](https://www.facebook.com/UrządStatystycznywWarszawie)
-  [gus.stat](https://www.instagram.com/gus.stat)
-  [głównyurządstatystycznygus](https://www.youtube.com/głównyurządstatystycznygus)
-  [głównyurządstatystyczny](https://www.linkedin.com/głównyurządstatystyczny)

Related information

[Structural changes of groups of the national economy entities in the REGON register, 2022](#)

Data available in databases

[Local Data Bank \(BDL\) Entities](#)

[Number of entities in the REGON register \(tables\)](#)

[Entities of the national economy in Mazowieckie Voivodship](#)

Terms used in official statistics

[Entities of the national economy](#)

[Private sector](#)

[Public sector](#)

[Natural person conducting economic activity](#)

